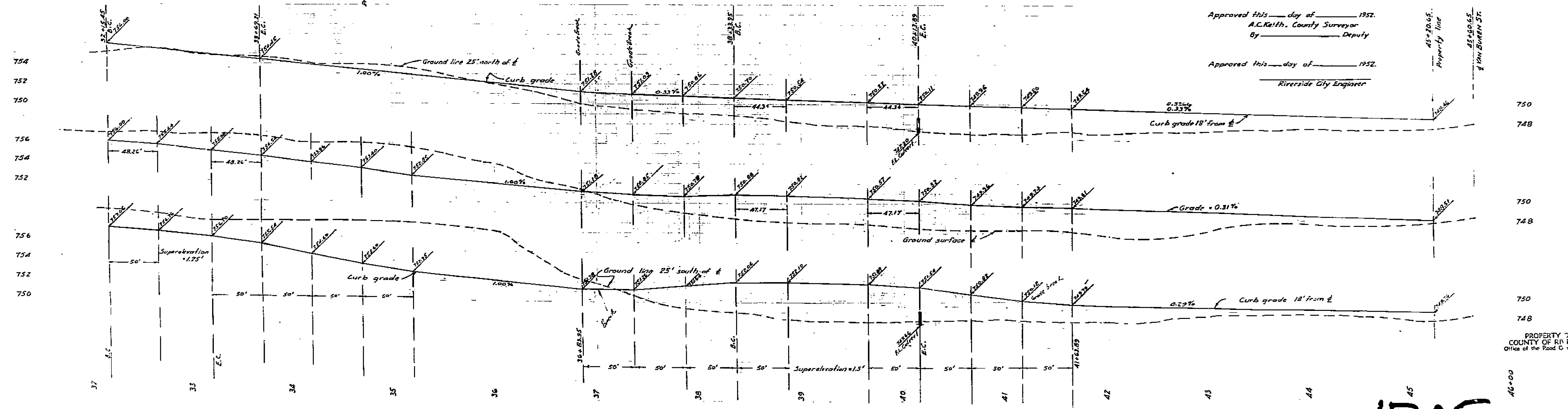


STREET PLAN AND PROFILE
OF
CHALLENGE AVENUE
BETWEEN
HURON AVENUE AND VAN BUREN AVENUE
 ALBERT A. WEBB ASSOCIATES
 CIVIL ENGINEERS
 OCTOBER 1952 SCALE 1"=20'



Approved this ___ day of ___ 1952.
 A.C. Keith, County Surveyor
 By _____ Deputy

Approved this ___ day of ___ 1952.

 Riverside City Engineer

PROPERTY OF
 COUNTY OF RIVERSIDE
 Office of the Road Commission

1705

31+00

46+00

E-5A-26
 B.5