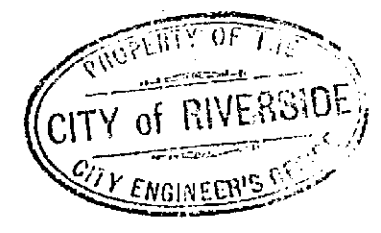
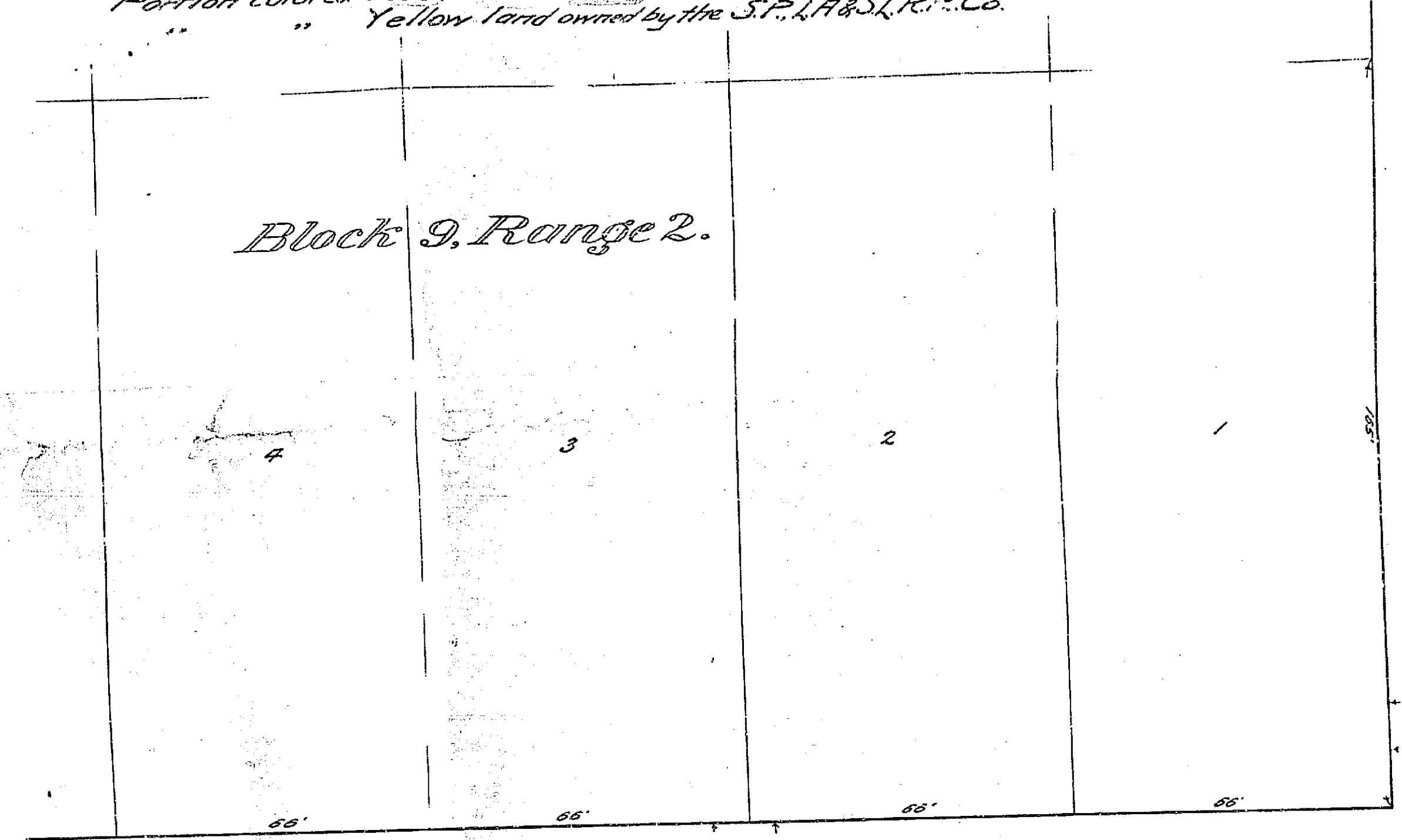
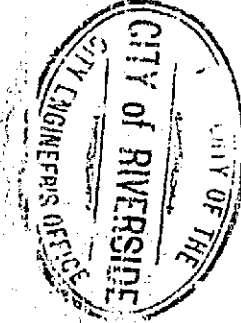


17.4"
S.L.R.R. CO
Cui, berry et al.

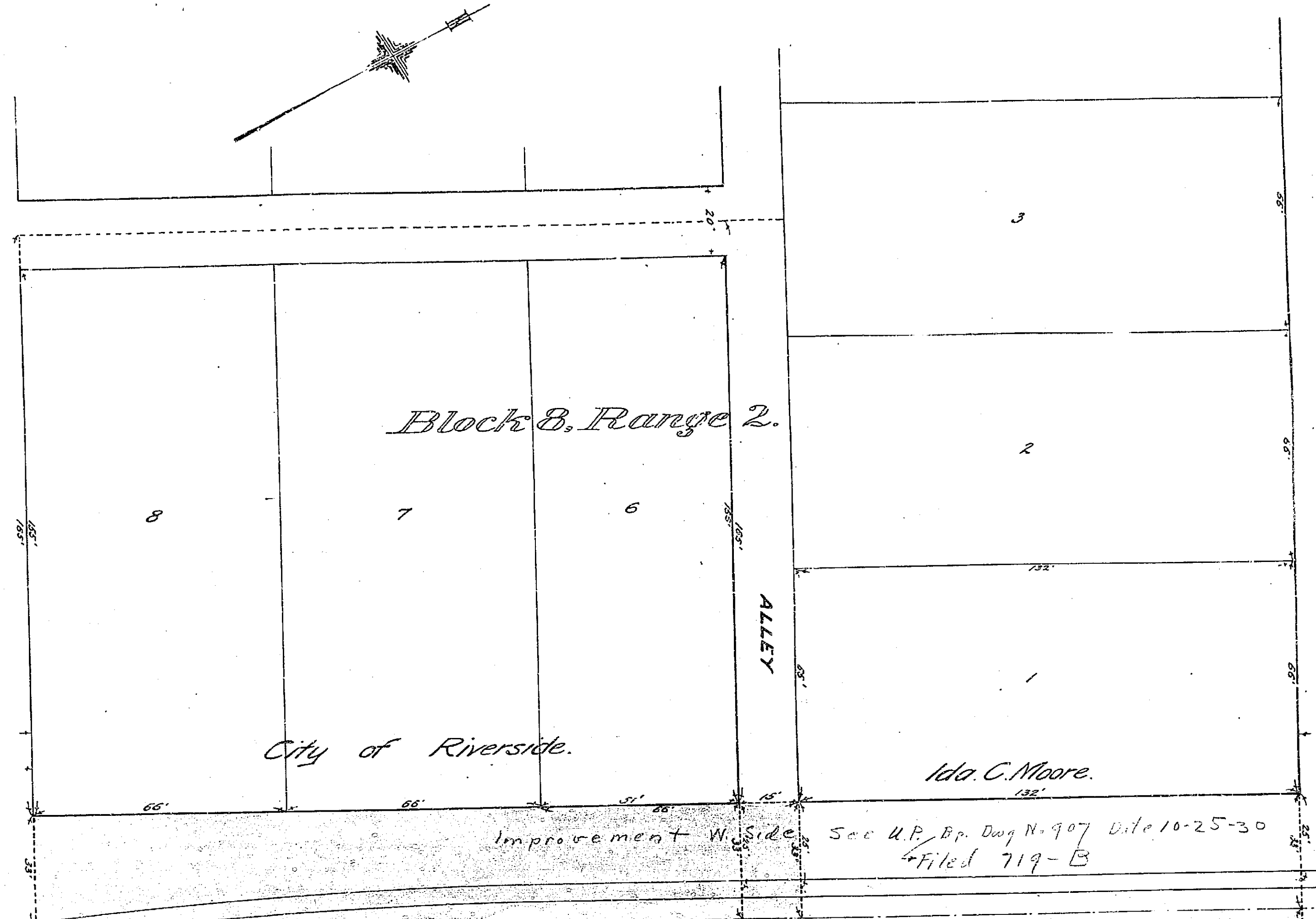


Map of A portion of the City of Riverside, California. Showing location of tracks in Vine Street, of the SAN PEDRO, LOS ANGELES & SALT LAKE RAILROAD COMPANY. Scale 20 feet to 1 inch.

Portion colored Red, Green or Blue indicates Land sought to be condemned.
Yellow land owned by the S.P., L.A. & S.L.R.R. Co.

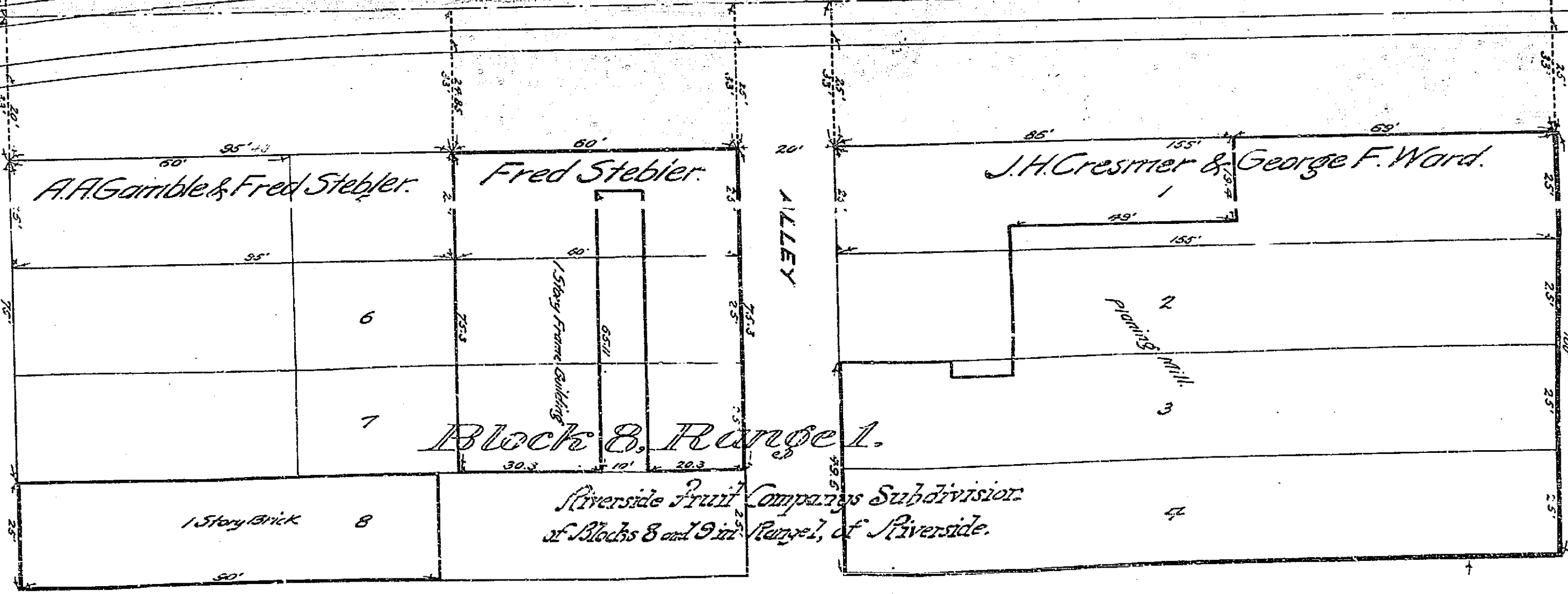
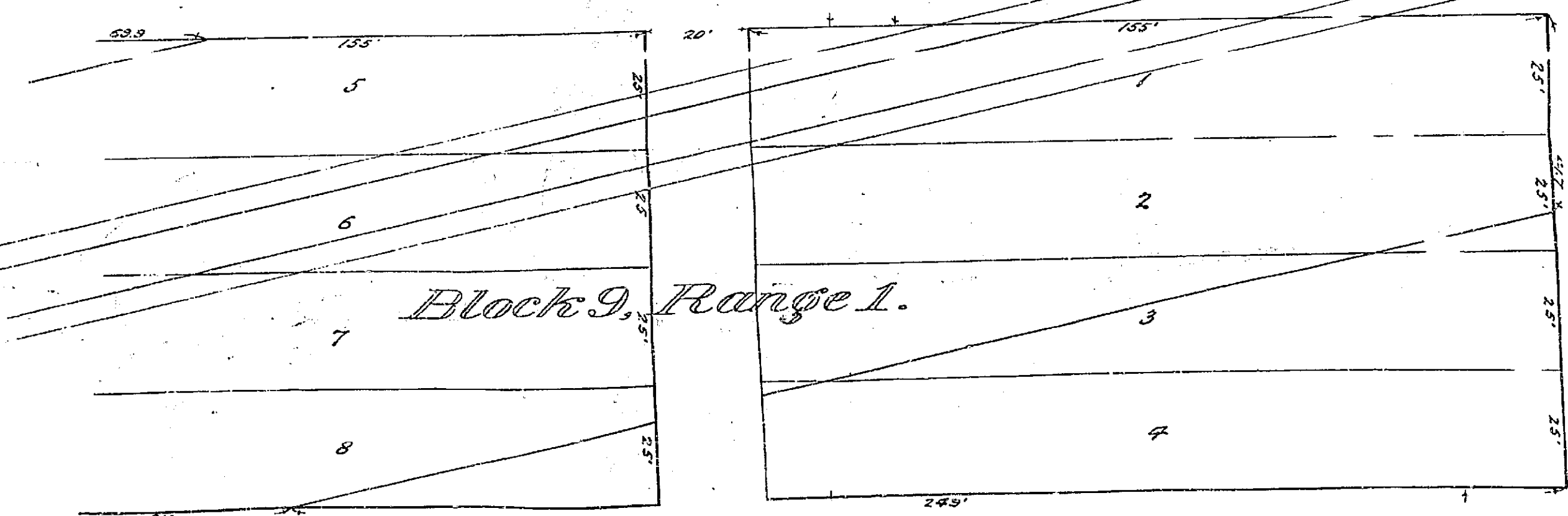


9TH STREET



8TH STREET

VINE STREET



SANTA FE

AVENUE

