

921 173
 421 921
 261 162

PLAN & PROFILE
 NO 173
 FOR THE CONSTRUCTION OF SANITARY SEWER ON
LIME STREET
 BETWEEN HOLDING ST. & SOUTHERN PACIFIC R.R.
 ENGINEERING DEPT CITY OF RIVERSIDE
 FB 449 PG 31 SCALE HOR. 1" = 50'
 VERT. 1" = 5'

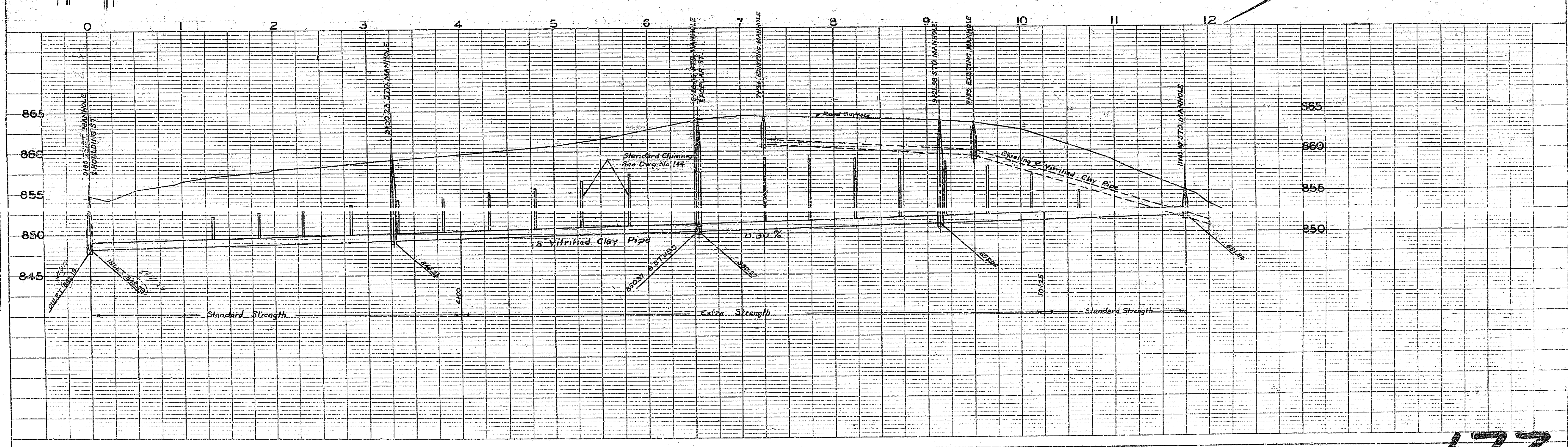
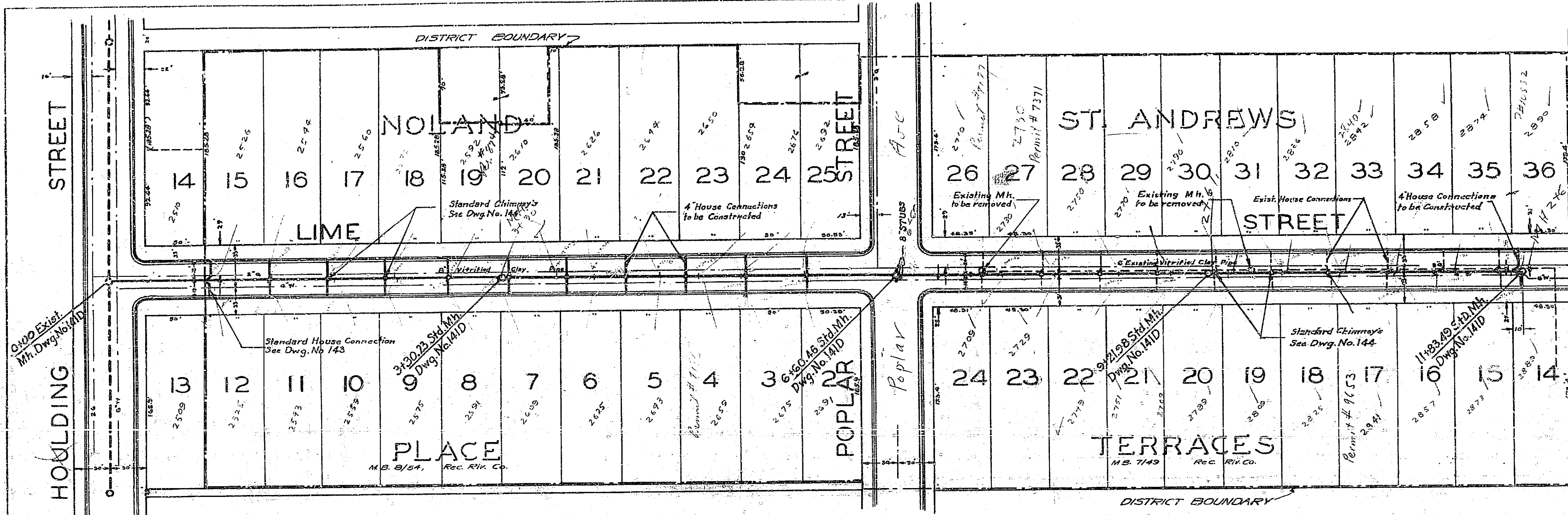
APPROVED *M. Williams*
 CITY ENGINEER
 A CIVIL ENGINEER REGISTERED UNDER
 THE LAWS OF THE STATE OF CALIFORNIA
 REG. NO. 3211

THESE PLANS APPROVED AND ADOPTED
 BY THE MAYOR AND COUNCIL OF THE CITY
 OF RIVERSIDE STATE OF CALIFORNIA ON
 THIS 11th DAY OF SEPTEMBER, 1949

William
 CITY CLERK
 OF RIVERSIDE, STATE OF CALIFORNIA

PLAN	REVISION
DATE	BY
NOTED	CHECKED
DATE	BY
NOTED	CHECKED
DATE	BY
NOTED	CHECKED
DATE	BY

PROFILE	REVISION
DATE	BY
NOTED	CHECKED
DATE	BY
NOTED	CHECKED
DATE	BY
NOTED	CHECKED
DATE	BY



173