

EL SOBRANTE RANCHO

TAYLOR STREET
 RIVERSIDE COUNTY CAL.
 SHEET 1 OF _ SHEETS
 APPROVED _____ AUG. 1939

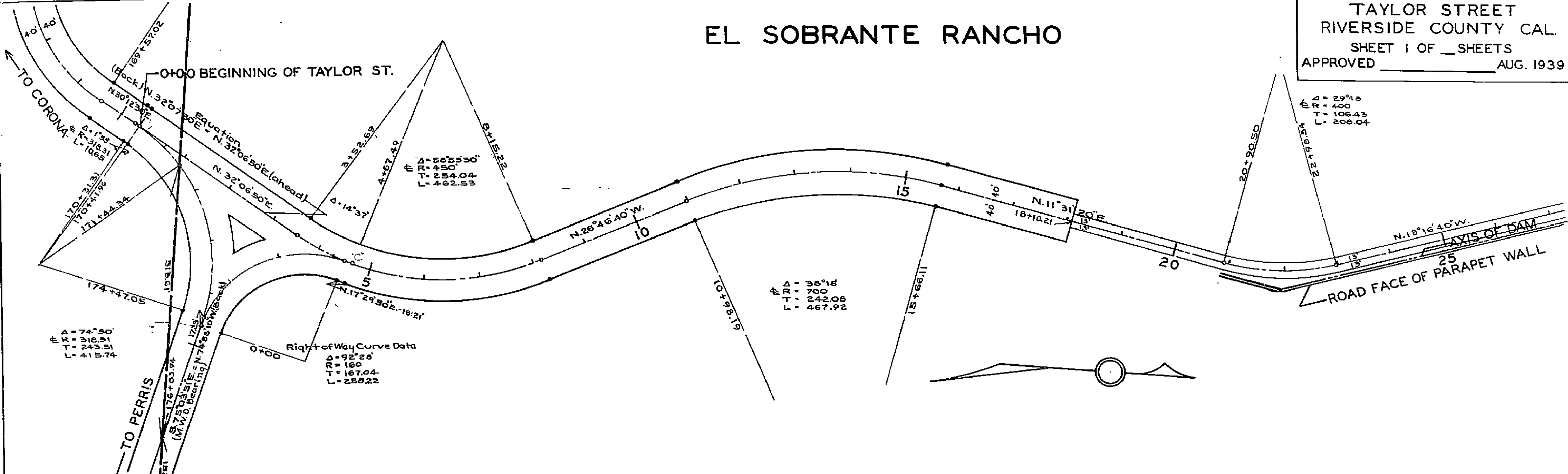
$\Delta = 29^{\circ}46'$
 $R = 400$
 $T = 106.43$
 $L = 208.04$

$\Delta = 38^{\circ}18'$
 $R = 700$
 $T = 242.08$
 $L = 467.92$

Right of Way Curve Data
 $\Delta = 92^{\circ}28'$
 $R = 160$
 $T = 167.04$
 $L = 258.22$

$\Delta = 74^{\circ}50'$
 $R = 318.31$
 $T = 243.51$
 $L = 415.74$

$\Delta = 58^{\circ}53'30''$
 $R = 450$
 $T = 254.04$
 $L = 462.53$



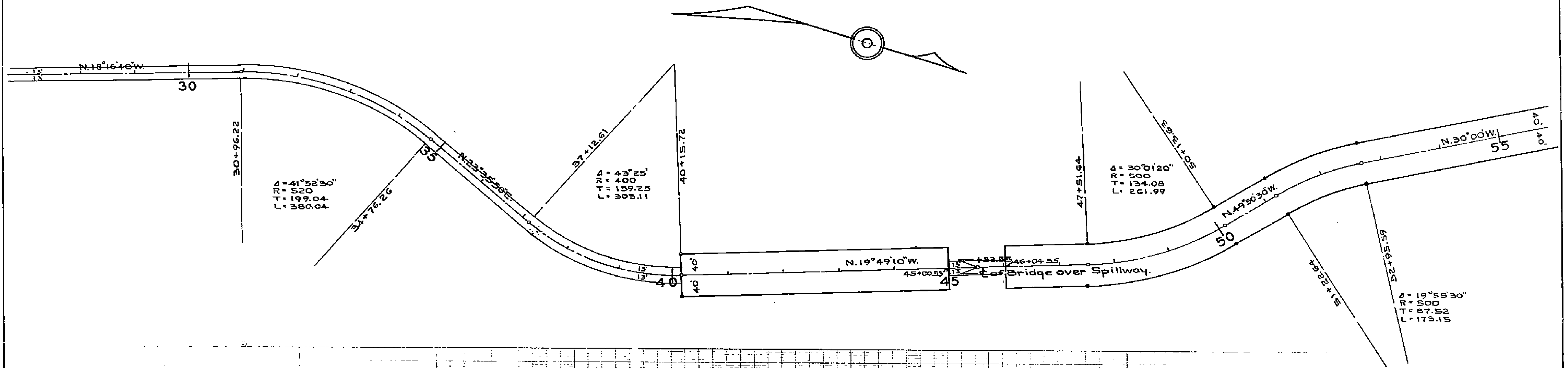
1734

All 1734

5624

EL SOBRANTE RANCHO

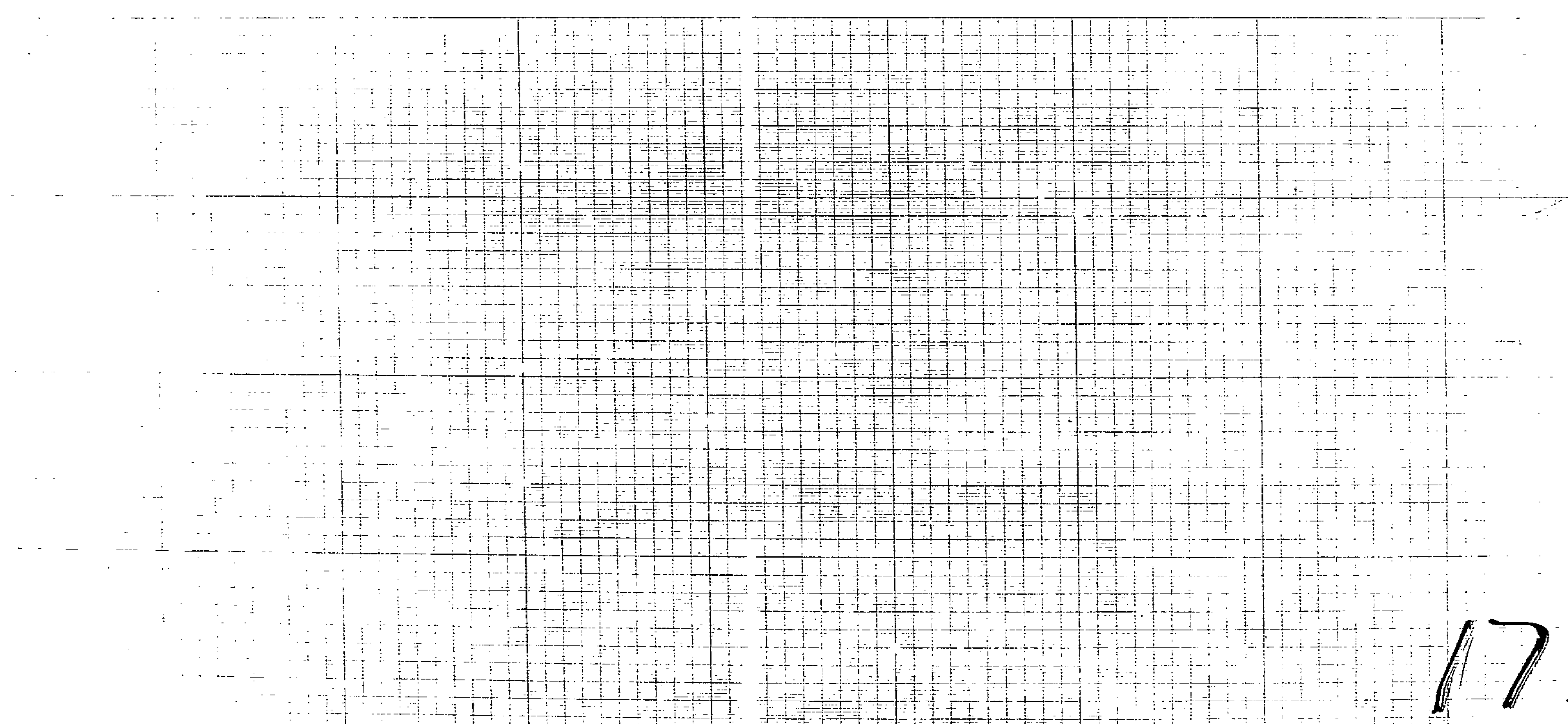
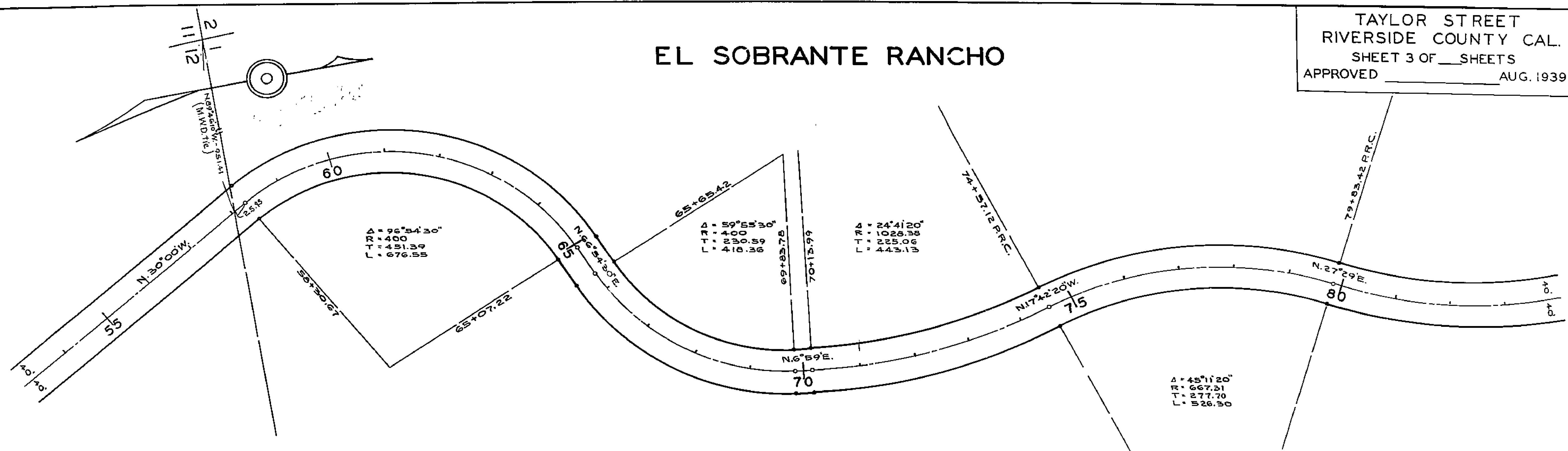
TAYLOR STREET
 RIVERSIDE COUNTY CAL.
 SHEET 2 OF ___ SHEETS
 APPROVED _____ AUG. 1939



1734

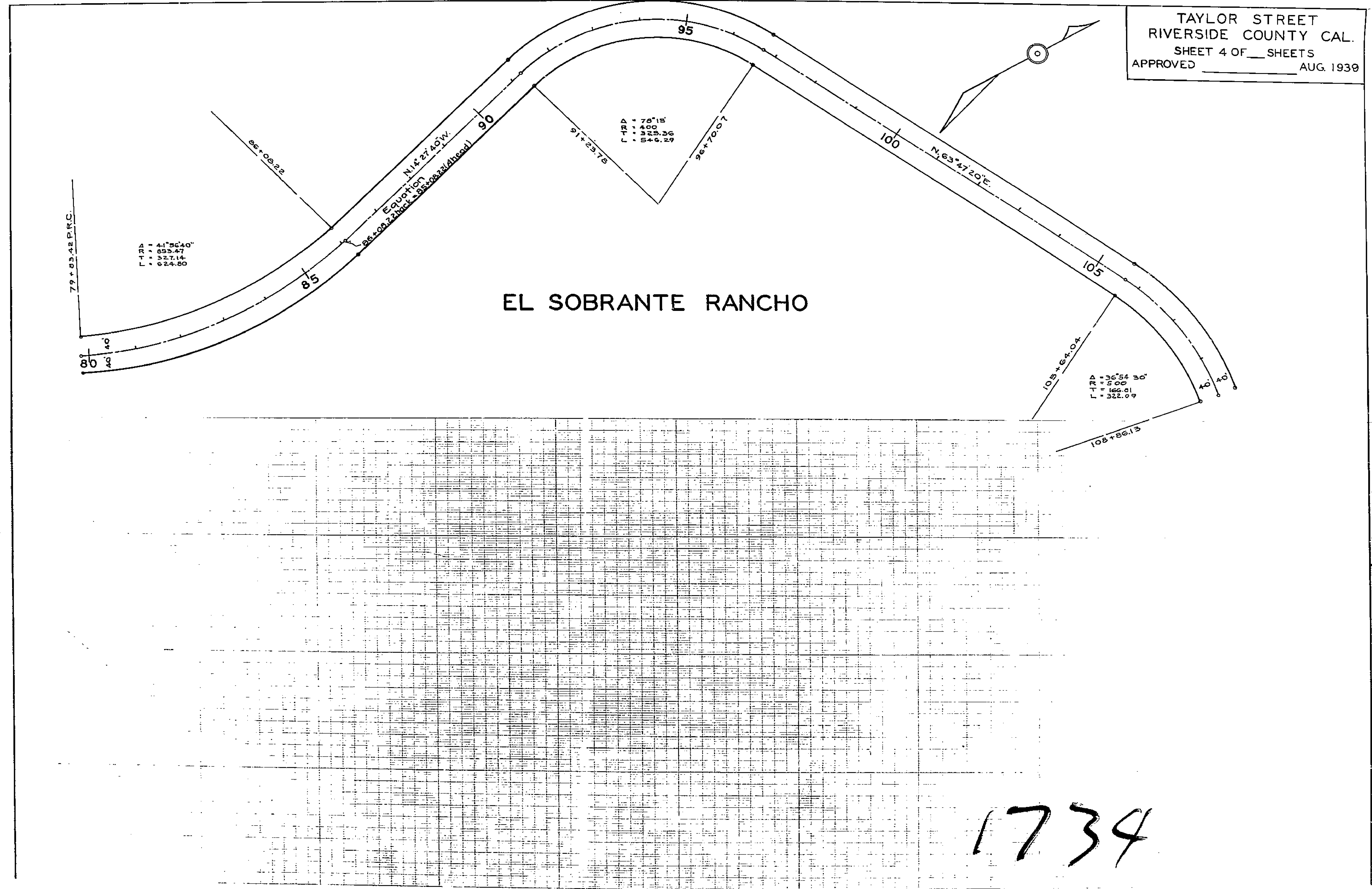
EL SOBRANTE RANCHO

TAYLOR STREET
RIVERSIDE COUNTY CAL.
SHEET 3 OF ___ SHEETS
APPROVED _____ AUG. 1939



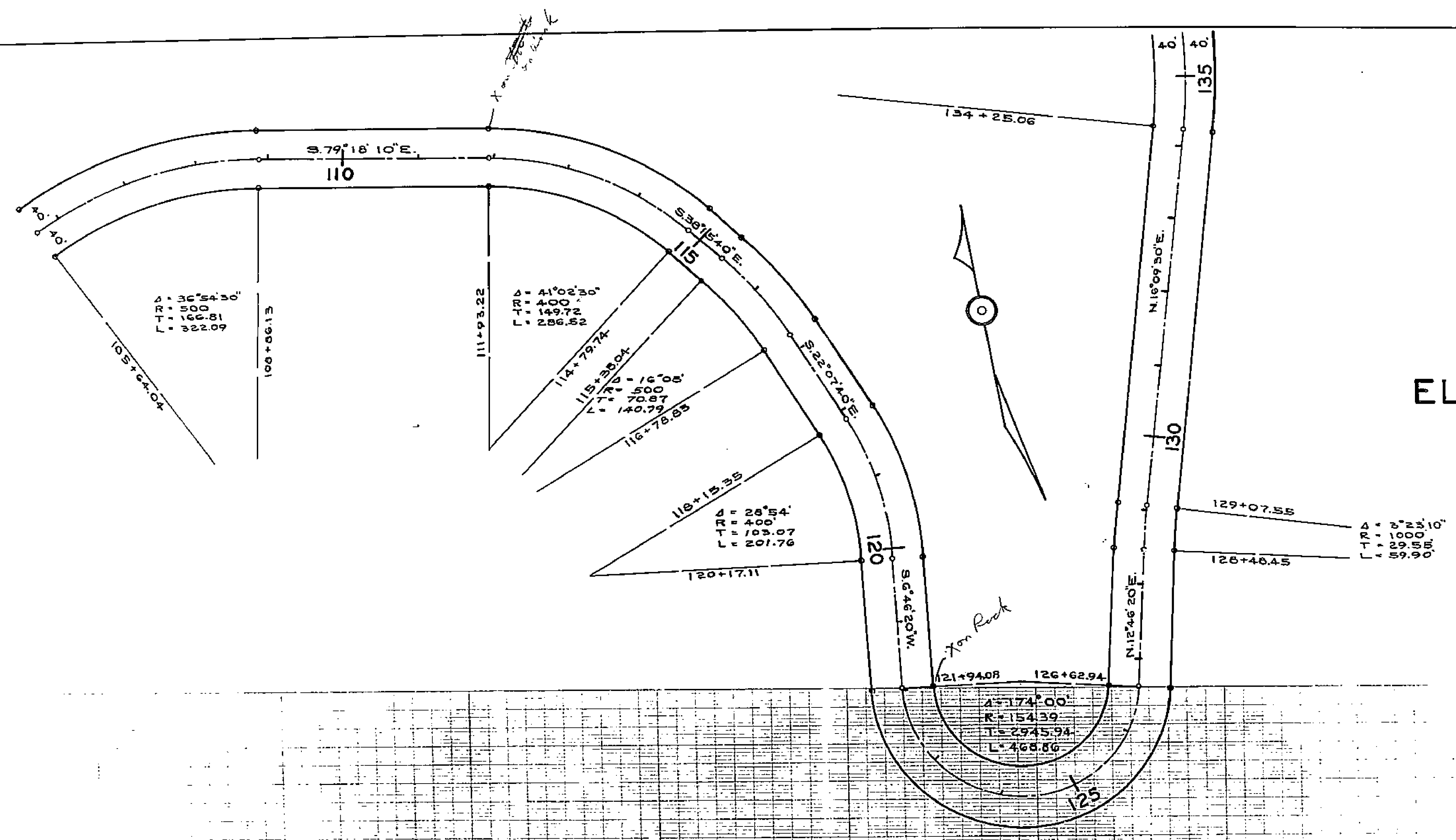
1734

TAYLOR STREET
 RIVERSIDE COUNTY CAL.
 SHEET 4 OF ___ SHEETS
 APPROVED _____ AUG. 1939



1734

PLAN PROFILE FILE 1



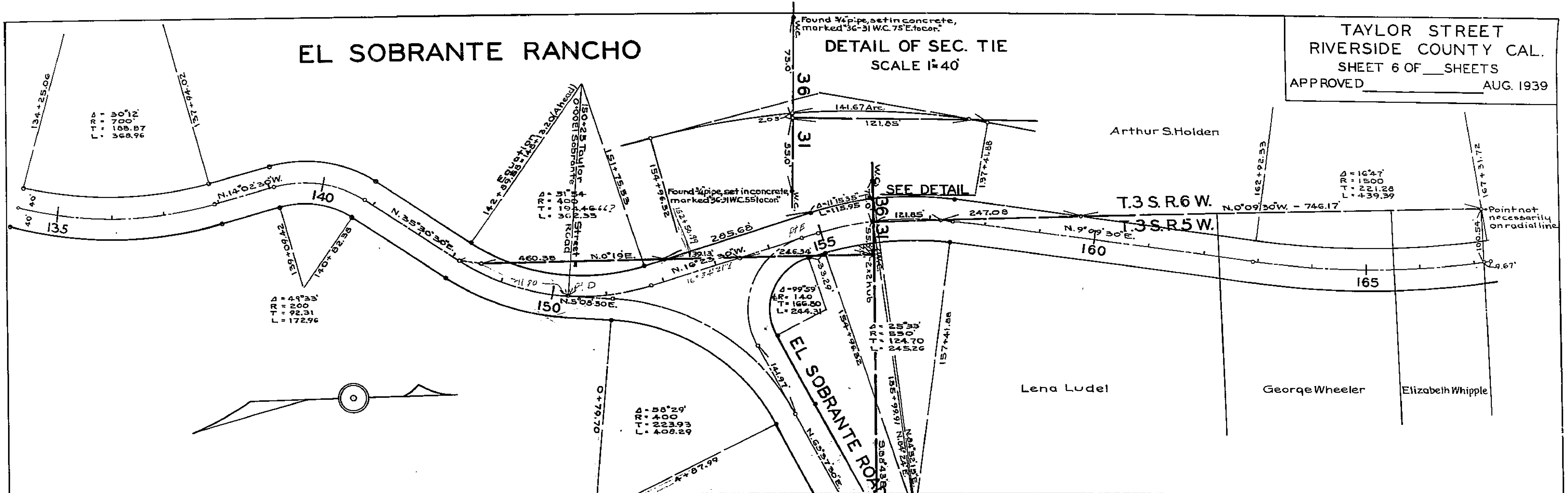
EL SOBRANTE RANCHO

1734

EL SOBRANTE RANCHO

DETAIL OF SEC. TIE
SCALE 1"=40'

TAYLOR STREET
RIVERSIDE COUNTY CAL.
SHEET 6 OF ___ SHEETS
APPROVED _____ AUG. 1939



LTR = 396.12
TR = 720.24
L = 188.87
L = 368.96

Δ = 49° 33'
TR = 200
L = 92.31
L = 172.96

LTR = 396.12
TR = 720.24
L = 188.87
L = 368.96

Δ = 58° 29'
TR = 400
L = 223.93
L = 408.29

Δ = 99° 59'
TR = 140
L = 166.80
L = 244.31

Δ = 25° 33'
TR = 880.0
L = 124.70
L = 245.26

Δ = 16° 47'
TR = 1500
L = 261.28
L = 459.39

T.3 S. R. 6 W.
T.3 S. R. 5 W.

Arthur S. Holden

Lena Ludel

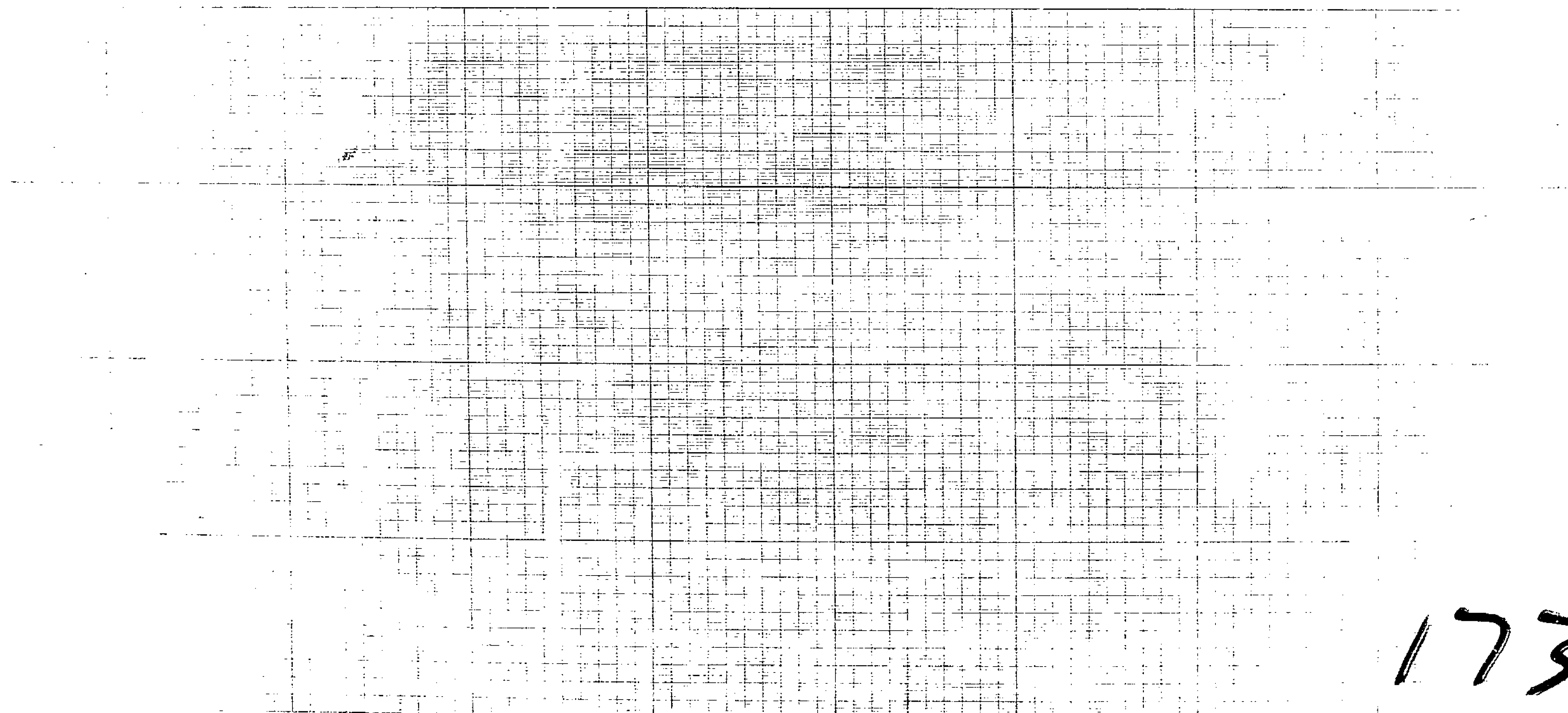
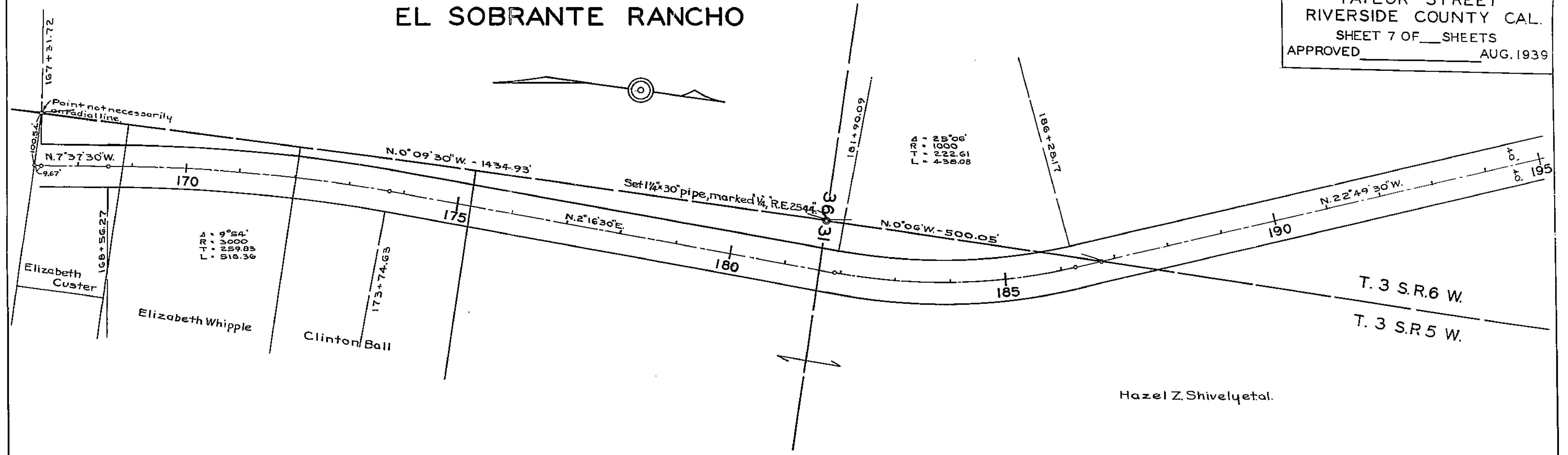
George Wheeler

Elizabeth Whipple

1734

EL SOBRANTE RANCHO

TAYLOR STREET
RIVERSIDE COUNTY CAL.
SHEET 7 OF ___ SHEETS
APPROVED _____ AUG. 1939

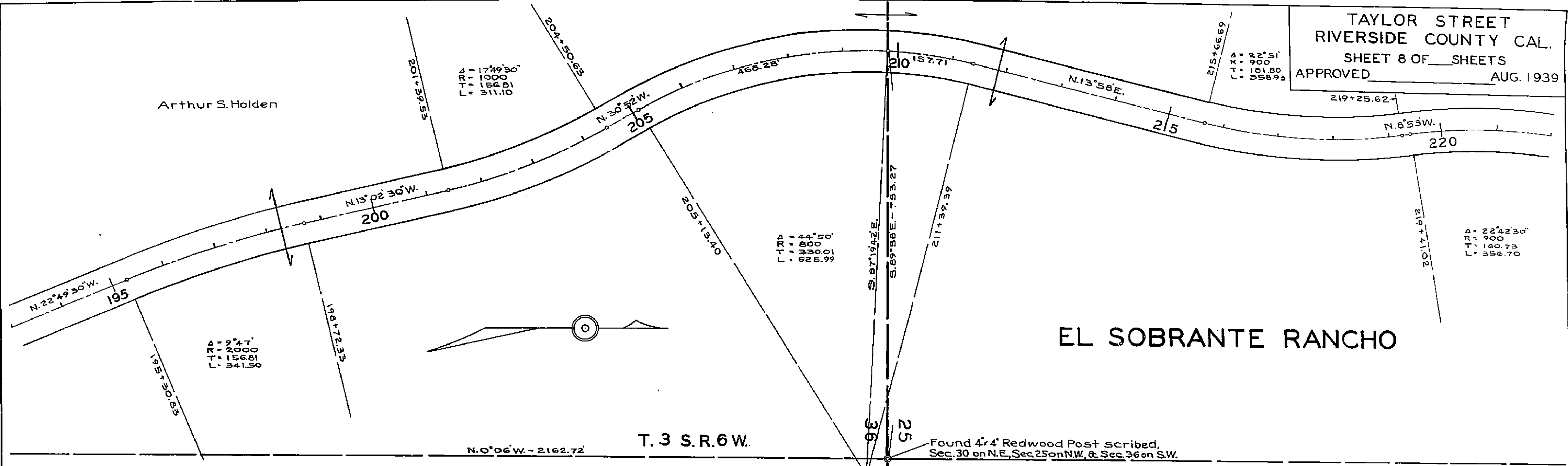


1734

TAYLOR STREET
 RIVERSIDE COUNTY CAL.
 SHEET 8 OF _____ SHEETS
 APPROVED _____ AUG. 1939

Arthur S. Holden

EL SOBRANTE RANCHO



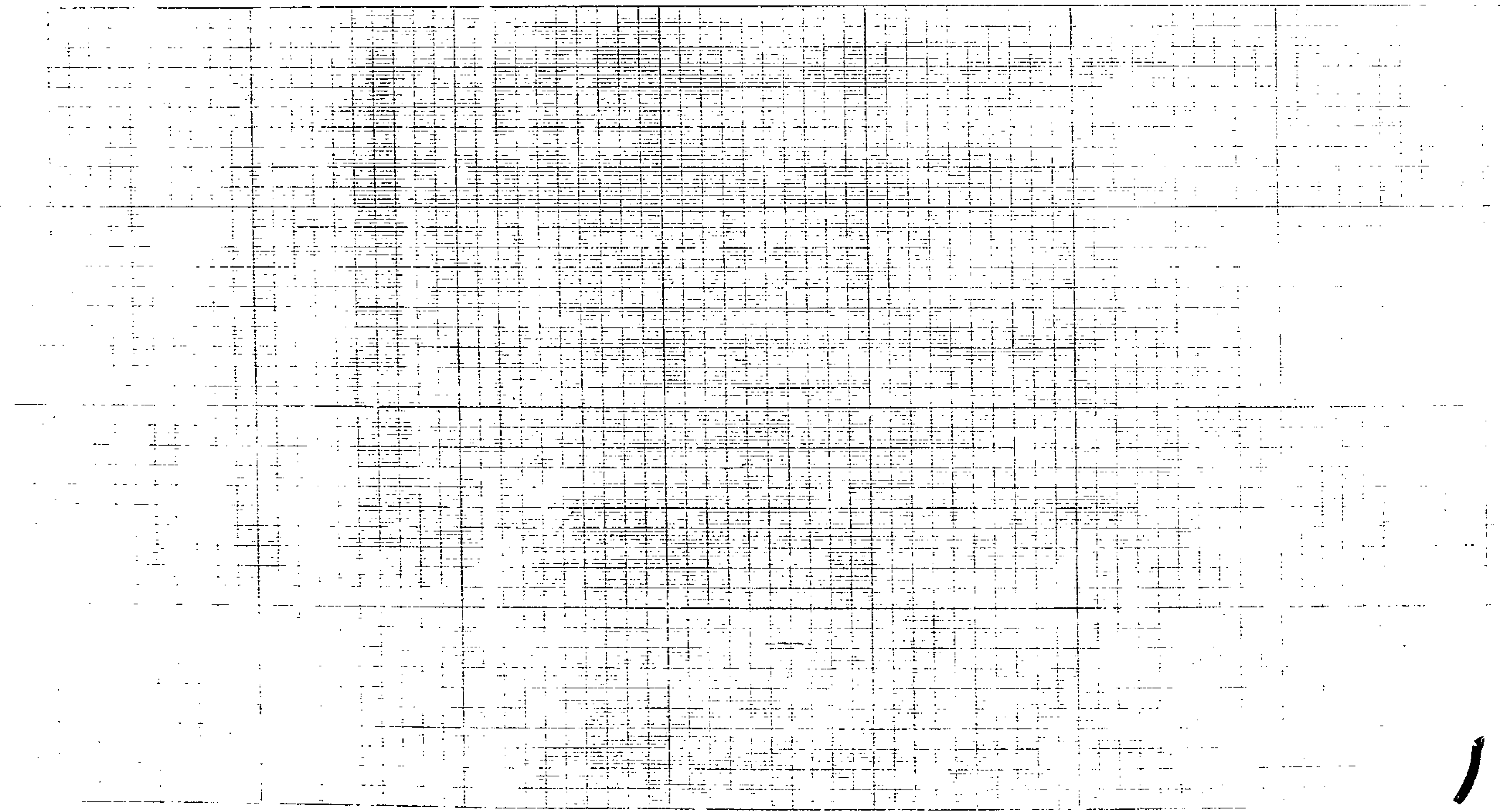
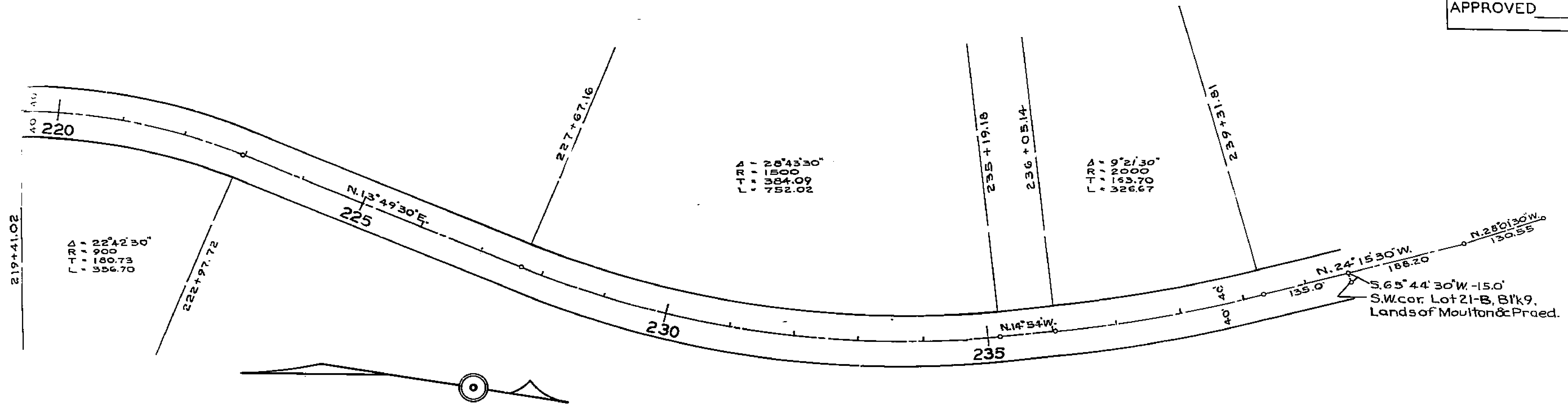
T. 3 S. R. 6 W.

T. 3 S. R. 5 W.

1734

EL SOBRANTE RANCHO

TAYLOR STREET
 RIVERSIDE COUNTY CAL.
 SHEET 9 OF ___ SHEETS
 APPROVED _____ AUG. 1939



1734