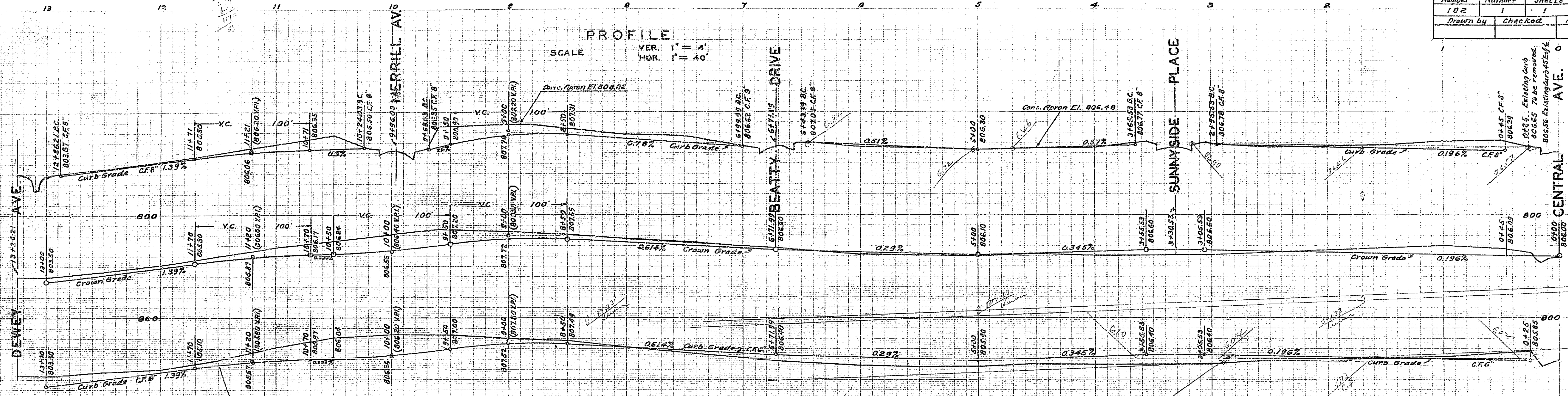


| ARCH WAY       |              | CENTRAL AVE. TO DEWEY AVE. |            |
|----------------|--------------|----------------------------|------------|
| Drawing Number | Sheet Number | Total Sheets               | Field Book |
| 182            | 1            | 1                          | 371        |
| Drawn by       | Checked      | Approved                   |            |



**PLAN AND PROFILE**  
OF THE PROPOSED IMPROVEMENT ON  
**ARCH WAY**  
CENTRAL AVE. TO DEWEY AVE.

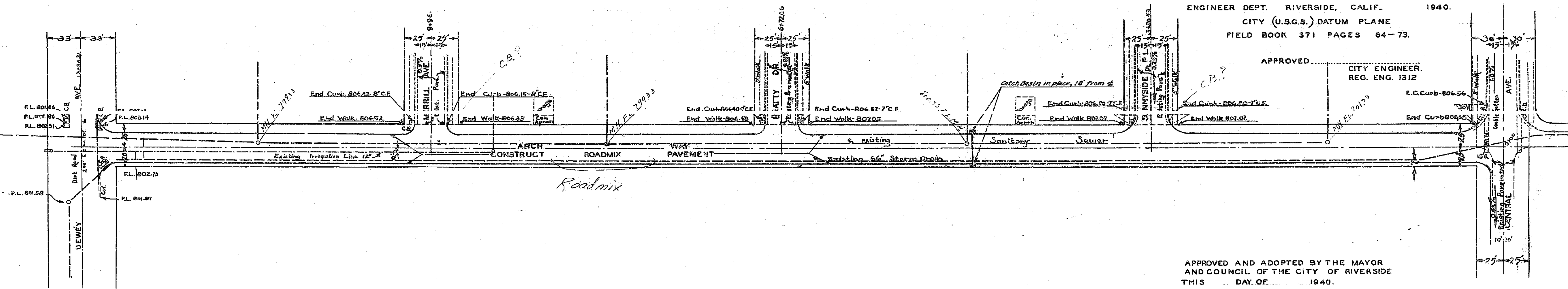
See # 413

See # 413

SCALE  
1" = 40'

ENGINEER DEPT. RIVERSIDE, CALIF. 1940.  
CITY (U.S.G.S.) DATUM PLANE  
FIELD BOOK 371 PAGES 64-73.

APPROVED  
CITY ENGINEER  
REG. ENG. 1312



APPROVED AND ADOPTED BY THE MAYOR  
AND COUNCIL OF THE CITY OF RIVERSIDE  
THIS DAY OF 1940.

CITY CLERK, CITY OF RIVERSIDE.

182