

PLAN & PROFILE  
NO. 198  
FOR THE CONSTRUCTION OF  
A SANITARY SEWER ON  
**STRONG STREET**  
WESTERLY FROM  
FAIRMOUNT BOULEVARD  
CITY OF RIVERSIDE - CALIFORNIA

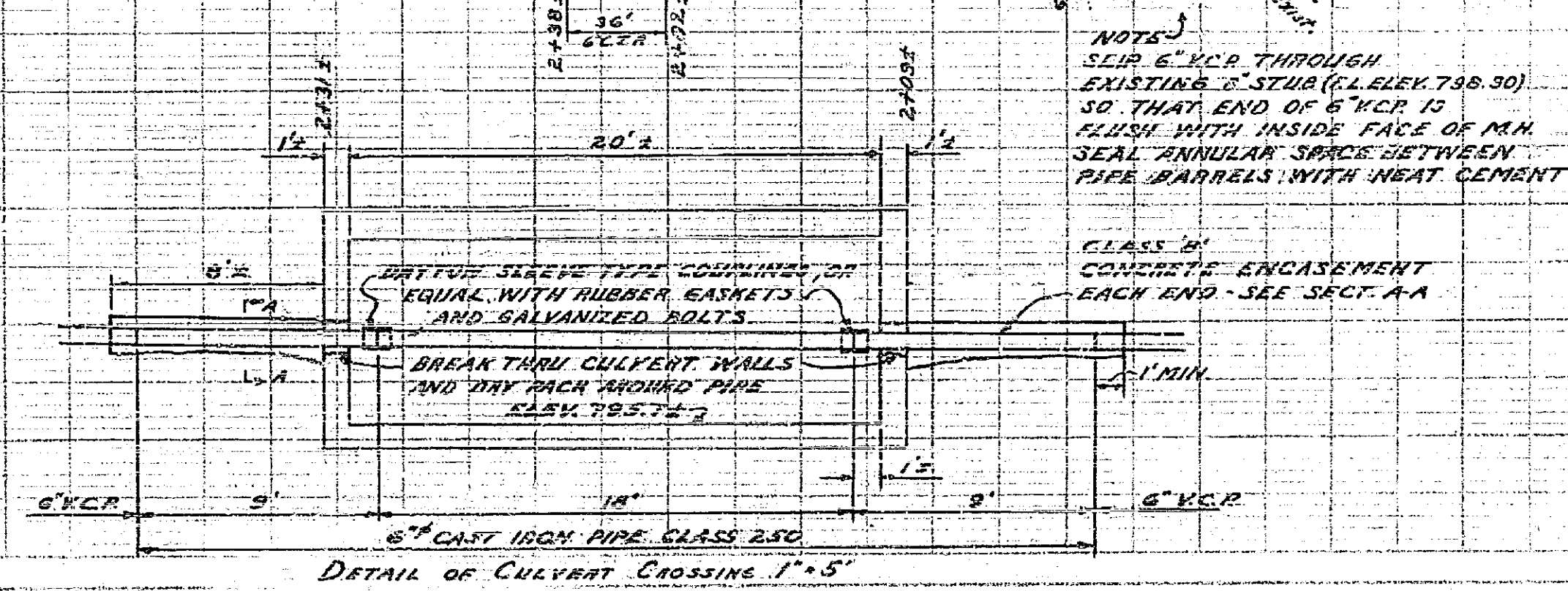
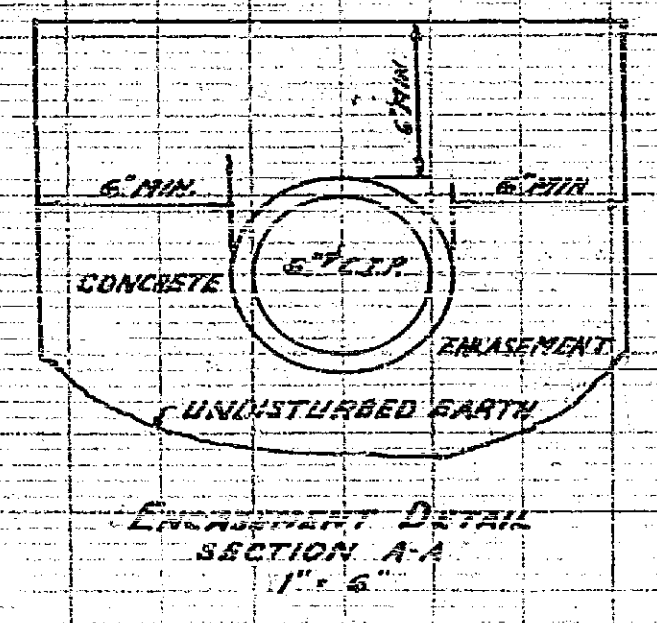
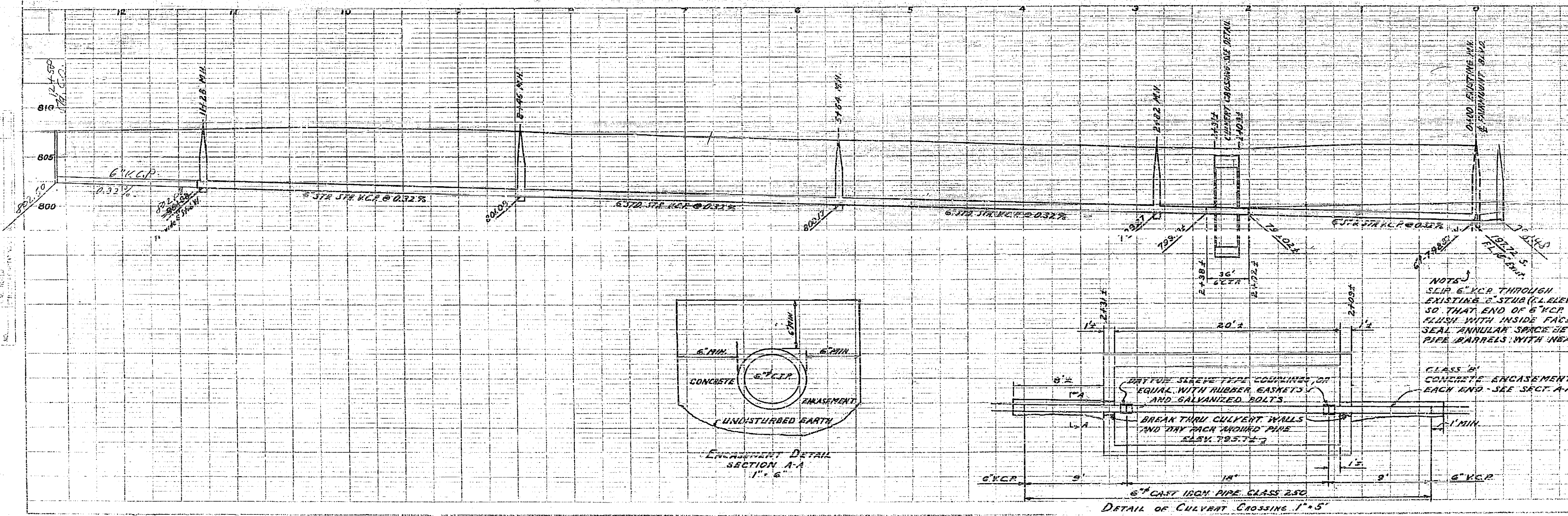
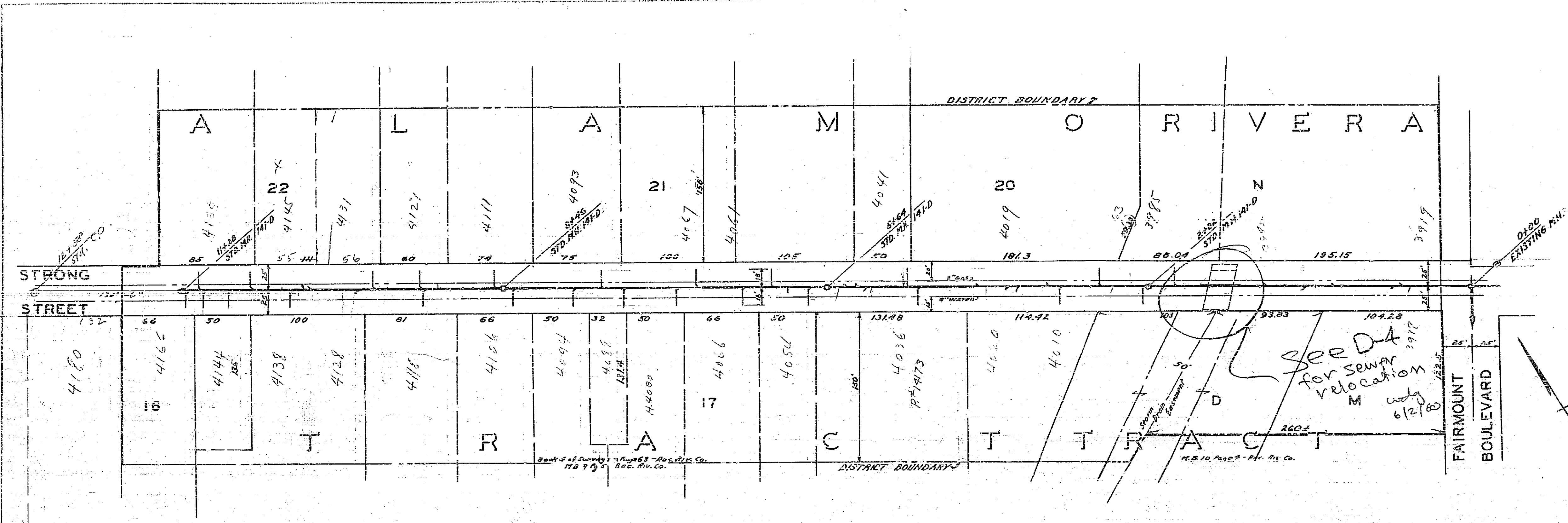
SCALES  
HORIZ. 1" = 50'  
VERT. 1" = 5'  
OTHERS AS NOTED  
FB. 516/54

APPROVED: *M. H. Swain*  
M. H. SWAIN - LICENSE NO. 5011  
CITY ENGINEER

THESE PLANS APPROVED AND ADOPTED BY THE  
MAYOR AND COUNCIL OF THE CITY OF RIVERSIDE,  
STATE OF CALIFORNIA, ON THIS 25th DAY OF  
MAY 1954.

*W. H. ...*  
CITY CLERK

DATE	BY	REVISION



NOTES:  
SLIP 6" C.P. THROUGH  
EXISTING 6" STUD (CL. ELEV. 798.90)  
SO THAT END OF 6" C.P. IS  
FLUSH WITH INSIDE FACE OF M.H.  
SEAL ANNULAR SPACE BETWEEN  
PIPE BARRELS WITH NEAT CEMENT

CLASS B  
CONCRETE ENCASMENT  
EACH END - SEE SECT. A-A

198



ASSESS NO. 379

DIAGRAM

EXHIBITING STRONG STREET SANITARY SEWER

IN THE CITY OF RIVERSIDE ON WHICH WORK HAS BEEN DONE UNDER MY OFFICIAL CONTRACT AS SUPERINTENDENT OF STREETS OF SAID CITY WITH CO. BRAND DATED MAY 12, 1953

FOR THE CONSTRUCTION OF SANITARY SEWER, MANHOLES, WYE BRANCHES, HOUSE CONNECTIONS

AS IS MORE PARTICULARLY DESCRIBED IN SAID CONTRACT TO WHICH REFERENCE IS HEREBY MADE FOR FURTHER PARTICULARS. SAID DIAGRAM ALSO SHOWS THE RELATIVE LOCATION OF EACH LOT PORTION OF LOT, PIECE OR PARCEL OF LAND ASSESSED FOR THE WORK DONE NUMBERED IN RED INK TO CORRESPOND TO THE RED INK NUMBERS IN THE ASSESSMENT

THE MARKINGS NEXT TO PROPERTY LINES SHOW LENGTH OF SAID LINES IN FEET.

SUBDIVISIONS ARE SHOWN BY BROKEN LINES. THE DISTRICT BENEFITED IS

BOUNDED BY A HEAVY DASHED LINE.

PROPERTY COVERED BY THIS ASSESSMENT IS SHOWN ON THE FOLLOWING RECORDED MAPS:

RIVERA TRACT REC. IN M.B. 10, PG. 4, REC. RIV. CO.

ALAMO TRACT REC. IN M.B. 9, PG. 5, REC. RIV. CO.

I HEREBY CERTIFY THAT THIS ASSESSMENT DIAGRAM WAS APPROVED BY THE CITY COUNCIL OF THE CITY OF RIVERSIDE AT A MEETING THEREOF HELD ON THE 19

CITY CLERK OF THE CITY OF RIVERSIDE.

HEREIN THE LEGEND OF THE DIFFERENT KINDS OF WORK PERFORMED IS SHOWN AS FOLLOWS:

SANITARY SEWER

STD. MANHOLE

WYE BRANCH

HOUSE CONNECTION



SUPERINTENDENT OF STREETS OF THE CITY OF RIVERSIDE. THE FOLLOWING IS A STATEMENT OF AMOUNTS OF DIFFERENT KINDS OF WORK DONE BY CO. BRAND UNDER

CONTRACT DATED MAY 12, 1953 PURSUANT TO RESOLUTION OF INTENTION NO 5602 ADOPTED BY THE CITY COUNCIL OF THE CITY OF RIVERSIDE ON THE 3RD DAY OF FEBRUARY 1953

6" VITRIFIED CLAY PIPE SEWER	109340 LIN. FT.
6" CAST IRON PIPE SEWER	36 LIN. FT.
6"x4" VITRIFIED CLAY WYES	35
4" VITRIFIED CLAY PIPE HOUSE CONNECTION	414 LIN. FT.
STD. MANHOLE	4
SLEEVE COUPLINGS AND APPURTENANCES	2
CLASS B CONCRETE ENCASEMENT	16 LIN. FT.
WORK ON EXISTING CULVERT	

AT SAID CITY OF RIVERSIDE THIS 12<sup>TH</sup> DAY OF AUG. 1953

SUPERINTENDENT OF STREETS OF THE CITY OF RIVERSIDE.

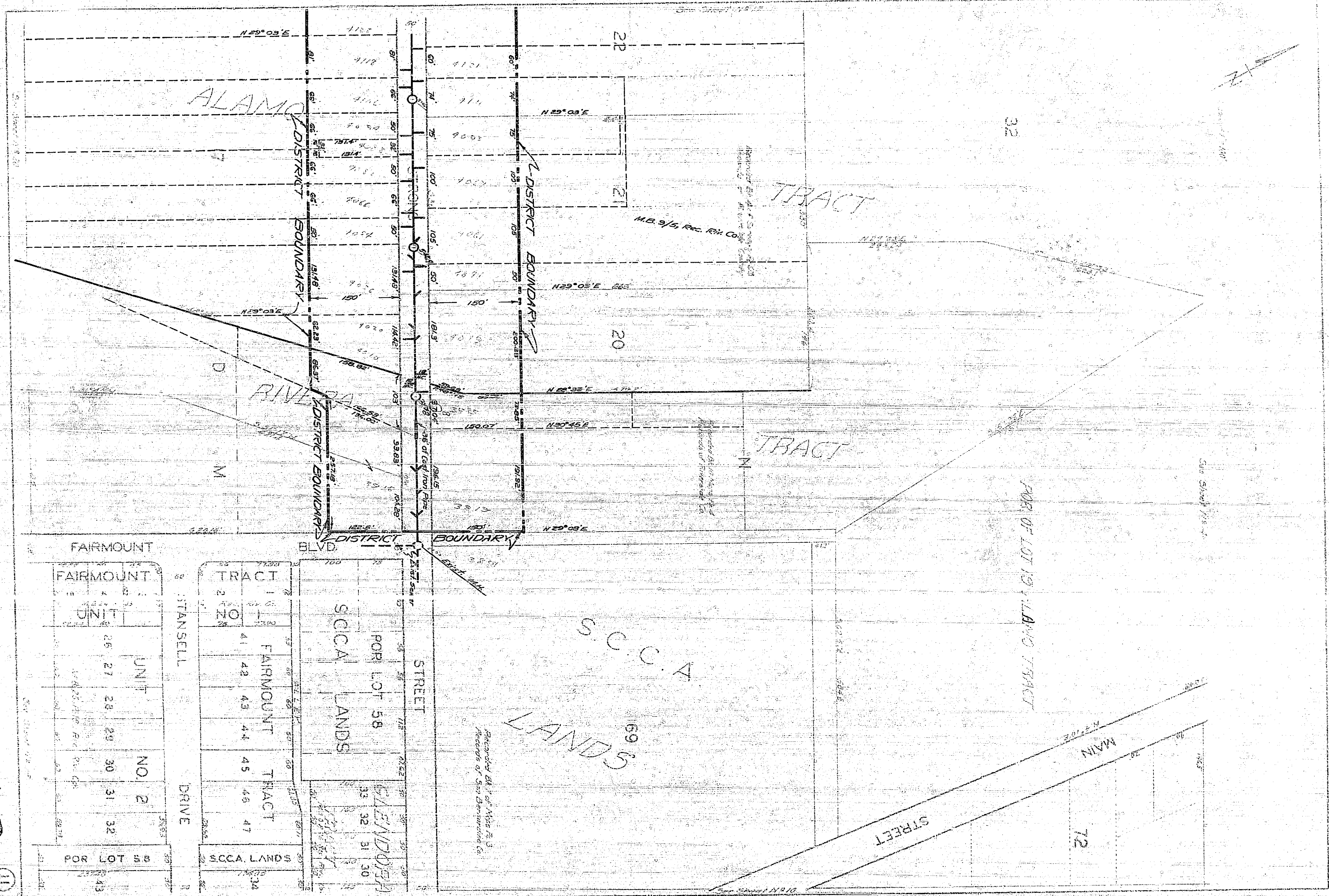
I HEREBY CERTIFY THAT THE ABOVE WORK WAS DONE IN ACCORDANCE WITH LINES AND GRADES FURNISHED BY ME AND THAT THE DIAGRAM OF THE ASSESSMENT DISTRICT FOR THE SAME IS CORRECT.

CITY ENGINEER OF THE CITY OF RIVERSIDE

RECORDED AT 9:30 O'CLOCK A.M. THIS 14<sup>TH</sup> DAY OF OCT. 1953

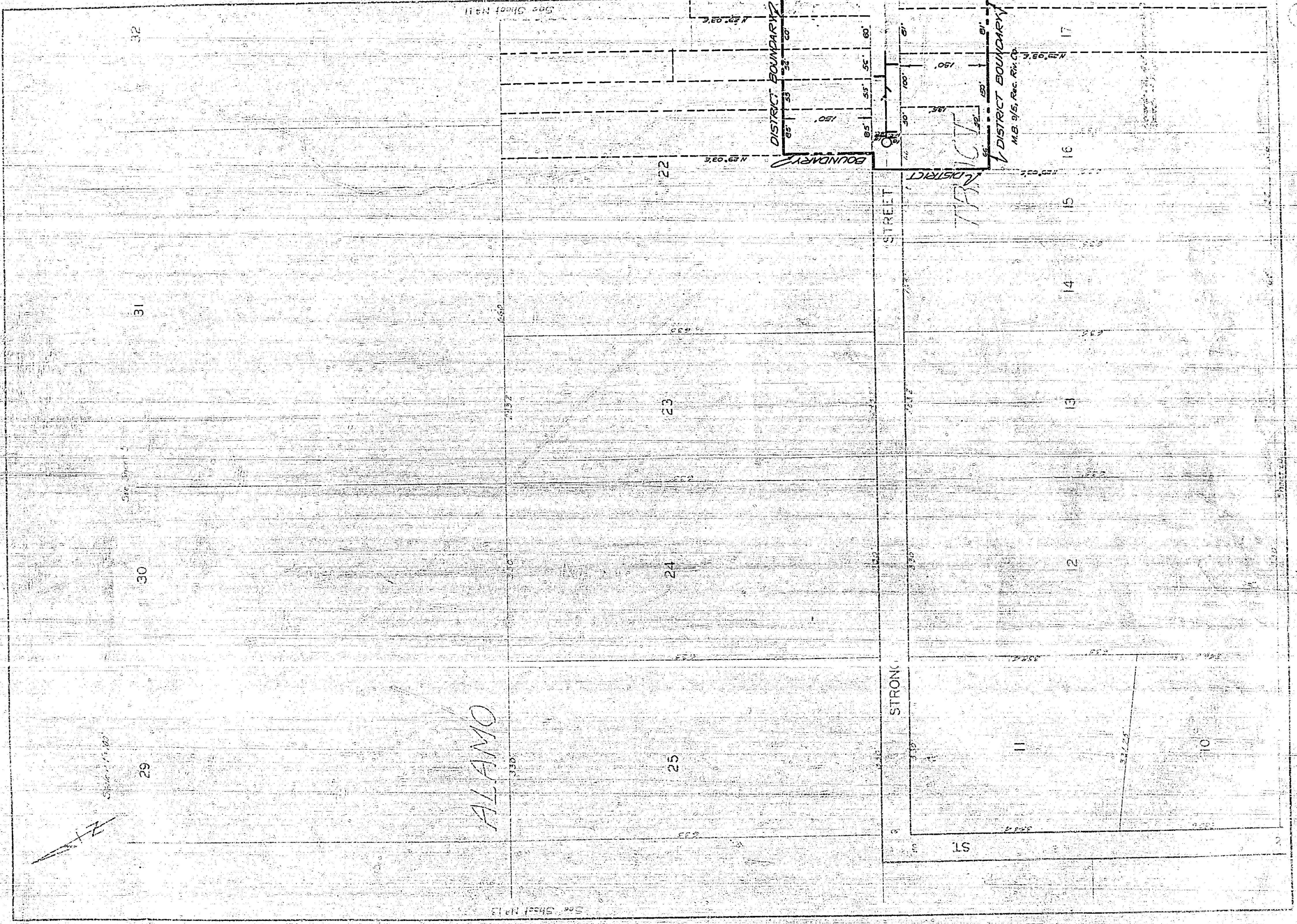
SUPERINTENDENT OF STREETS OF THE CITY OF RIVERSIDE.





198





861  
12