



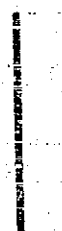


DIAGRAM

EXHIBITING SPRUCE STREET SEWER DISTRICT

IN THE CITY OF RIVERSIDE ON WHICH WORK HAS BEEN DONE UNDER MY OFFICIAL CONTRACT AS SUPERINTENDENT OF STREETS OF SAID CITY WITH PIPELINE CONSTRUCTION COMPANY DATED FOR THE CONSTRUCTION OF SANITARY SEWER, WYE-BRANCHES, HOUSE CONNECTIONS, CLEANOUT AND MANHOLES. AS IS MORE PARTICULARLY DESCRIBED IN SAID CONTRACT TO WHICH REFERENCE IS HEREBY MADE FOR FURTHER PARTICULARS; SAID DIAGRAM ALSO SHOWS THE RELATIVE LOCATION OF EACH LOT, PORTION OF LOT, PIECE OR PARCEL OF LAND ASSESSED FOR THE WORK DONE NUMBERED IN CIRCLES TO CORRESPOND TO THE RED INK NUMBERS IN THE ASSESSMENT HEREIN FIGURES NEXT TO PROPERTY LINES SHOW LENGTH OF SAID LINES IN FEET. THE MARK (X) MEANS FEET. PROPERTY LINES THAT DIFFER FROM THE RECORDED SUBDIVISIONS ARE SHOWN BY BROKEN LINES. THE DISTRICT BENEFITED IS BOUNDED BY A HEAVY DASHED LINE. PROPERTY COVERED BY THIS ASSESSMENT IS SHOWN ON THE FOLLOWING RECORDED MAPS:

- FILES SUBDIVISION, BOOK 5 OF MAPS, PAGE 129 RECORDS OF RIVERSIDE COUNTY, CALIFORNIA
- RUSSELL TRACT NO. 2, BOOK 19, OF MAPS, PAGE 26 RECORDS OF RIVERSIDE COUNTY, CALIFORNIA I HEREBY CERTIFY THAT THIS ASSESSMENT DIAGRAM WAS APPROVED BY THE CITY COUNCIL OF THE CITY OF RIVERSIDE AT A MEETING THEREOF HELD ON THE 19
- E. N. SMITH'S SUBDIVISION, BOOK 5 OF MAPS, PAGE 179 RECORDS OF RIVERSIDE COUNTY, CALIFORNIA
- WAUREGAN TRACT BOOK 6 OF MAPS, PAGE 52 RECORDS OF RIVERSIDE COUNTY, CALIFORNIA
- A PORTION OF LOT 40, S.C.C.A. LANDS, RECORDED IN BOOK 7 OF MAPS, PAGE 3, RECORDS OF SAN BERNARDINO COUNTY, CALIFORNIA, KNOWN AS (ASSESSORS MAP NO. 1).

HEREIN THE LEGEND OF THE DIFFERENT KINDS OF WORK PERFORMED IS SHOWN AS FOLLOWS:

- STANDARD MANHOLES 
- STANDARD CLEANOUT 
- VIT. CLAY PIPE SEWER 
- VIT. CLAY PIPE WYE BRANCH 
- VIT. CLAY PIPE HOUSE CONNECTIONS 

SUPERINTENDENT OF STREETS OF THE CITY OF RIVERSIDE THE FOLLOWING IS A STATEMENT OF AMOUNTS OF DIFFERENT KINDS OF WORK DONE BY PIPELINE CONSTRUCTION CO. UNDER CONTRACT DATED DECEMBER 19, 1946 PURSUANT TO RESOLUTION OF INTENTION NO. 4101 ADOPTED BY THE CITY COUNCIL OF THE CITY OF RIVERSIDE ON THE 29TH DAY OF OCTOBER 1946

STANDARD MANHOLES	10
STANDARD CLEANOUT	1
10" VIT. CLAY PIPE SEWER	2,825 LIN. FT.
10" X 6" VIT. CLAY PIPE WYE BRANCH	33
6" VIT. CLAY PIPE HOUSE CONNECTIONS	763 LIN. FT.
8" VIT. CLAY PIPE SEWER	60 LIN. FT.
8" X 6" VIT. CLAY PIPE WYE BRANCH	2

AT SAID CITY OF RIVERSIDE THIS DAY OF

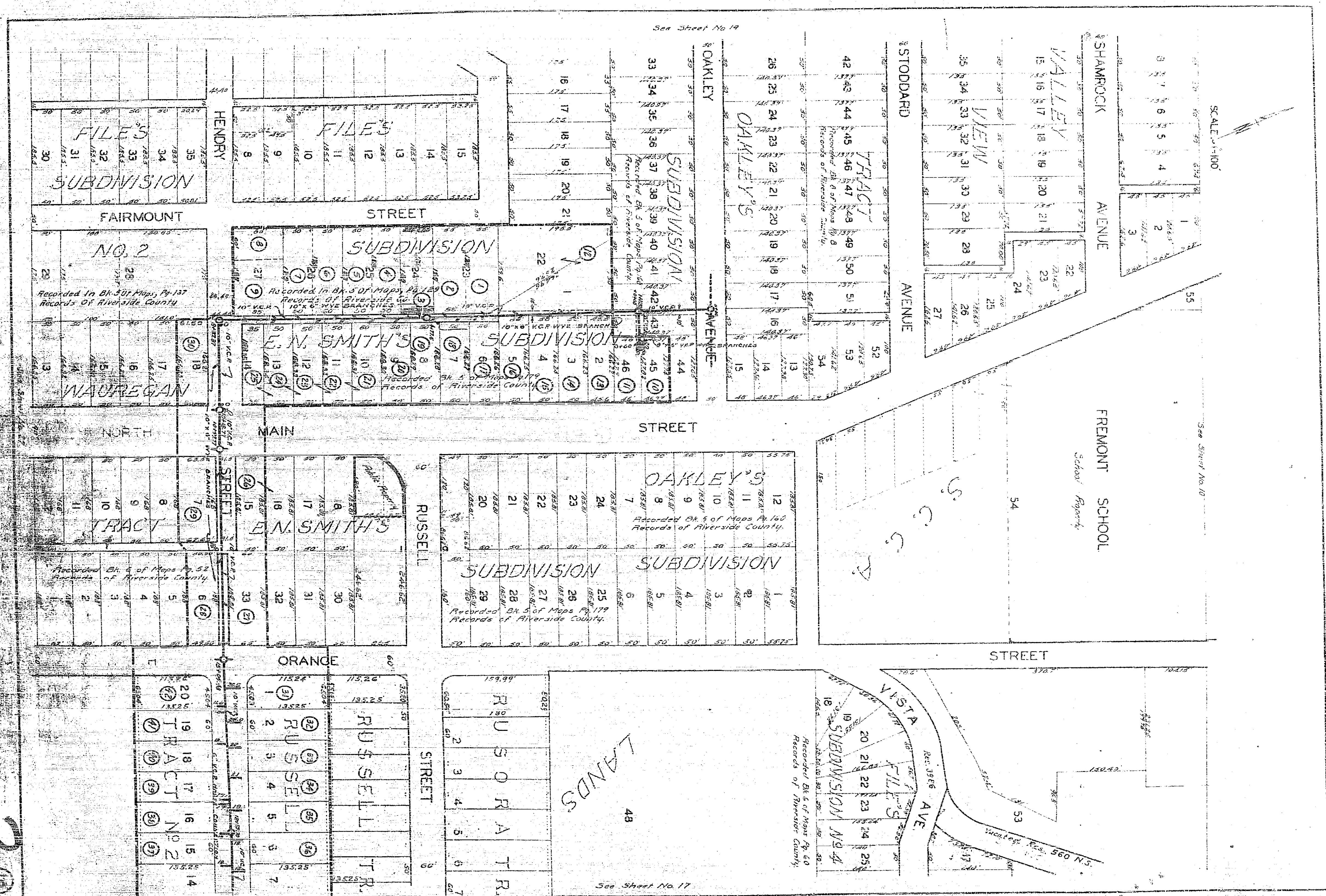
SUPERINTENDENT OF STREETS OF THE CITY OF RIVERSIDE.

I HEREBY CERTIFY THAT THE ABOVE WORK WAS DONE IN ACCORDANCE WITH LINES AND GRADES FURNISHED BY ME AND THAT THE DIAGRAM OF THE ASSESSMENT DISTRICT FOR THE SAME IS CORRECT.

CITY ENGINEER OF THE CITY OF RIVERSIDE.

RECORDED AT O'Clock 19

SUPERINTENDENT OF STREETS OF THE CITY OF RIVERSIDE.



SCALE 1"=100'

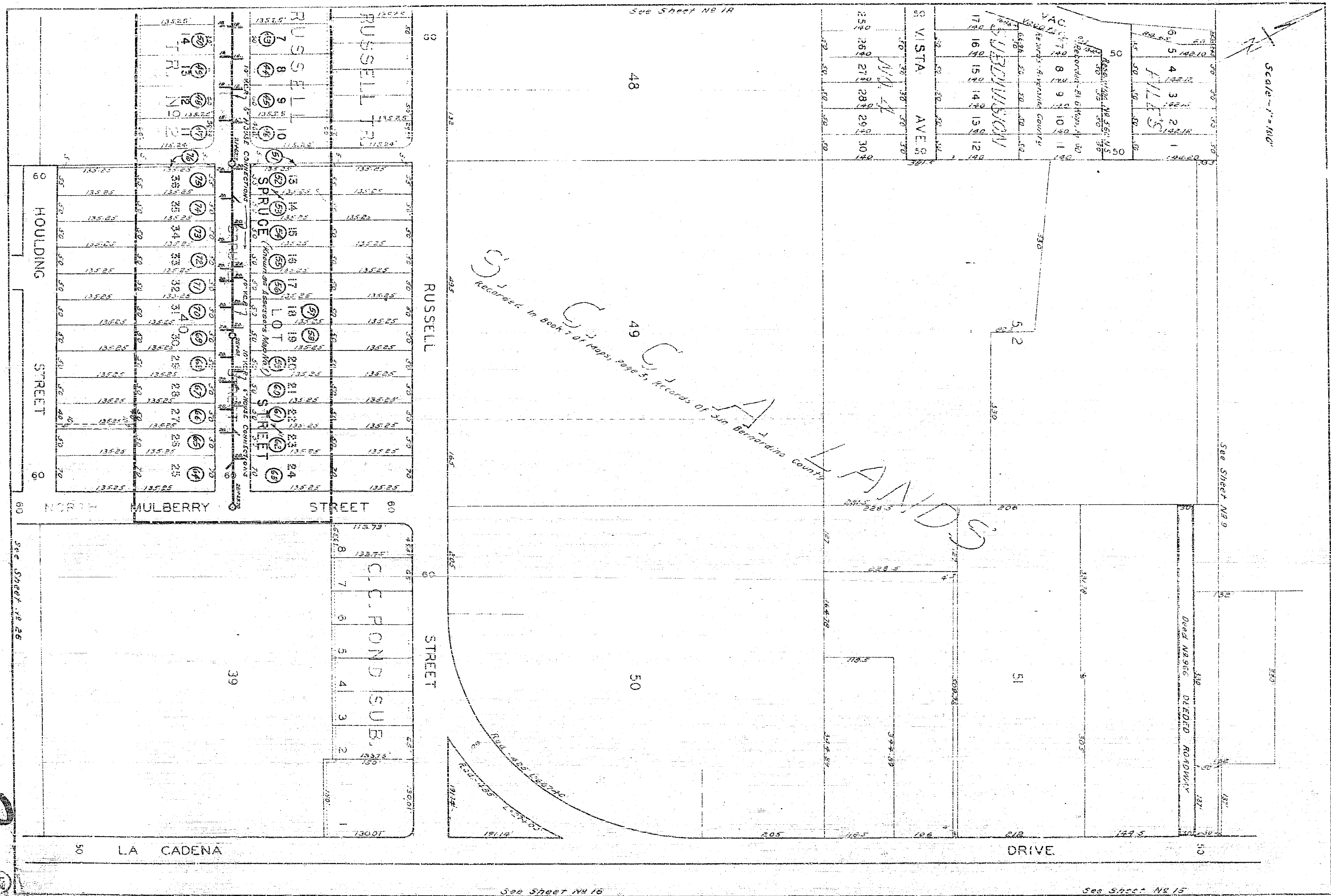
See Sheet No 14

See Sheet No 10

See Sheet No 17

SHEET 2 TOTAL 3

15



SHEET 3 TOTAL 3

See Sheet No 18

48

S.G. LANDS  
 Recorded in Book 7 of Maps, Page 55, Records of San Bernardino County

Scale - 1" = 100'

See Sheet No 9

See Sheet No 15

See Sheet No 15

See Sheet No 16

See Sheet No 26

17