

36' Sand Bank, 3800 ft<sup>2</sup>  
 24' 1/2" 1400 ft<sup>2</sup>  
 24' 1/2" 2 1/2"

Intersection at 770

Ditch branching to rt.

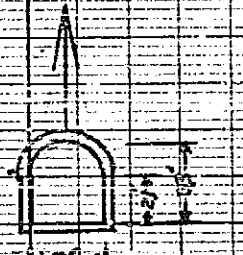
Ditch branching to lt.

Profile to W. & Pranda St.

Profile to E. & Pranda St.

Culvert  
Under  
Pranda St.

16" Concrete Pipe



1 sec. Culvert  
Under Pranda St.

890

880

870

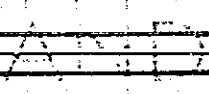
860

850

850

367/61-62

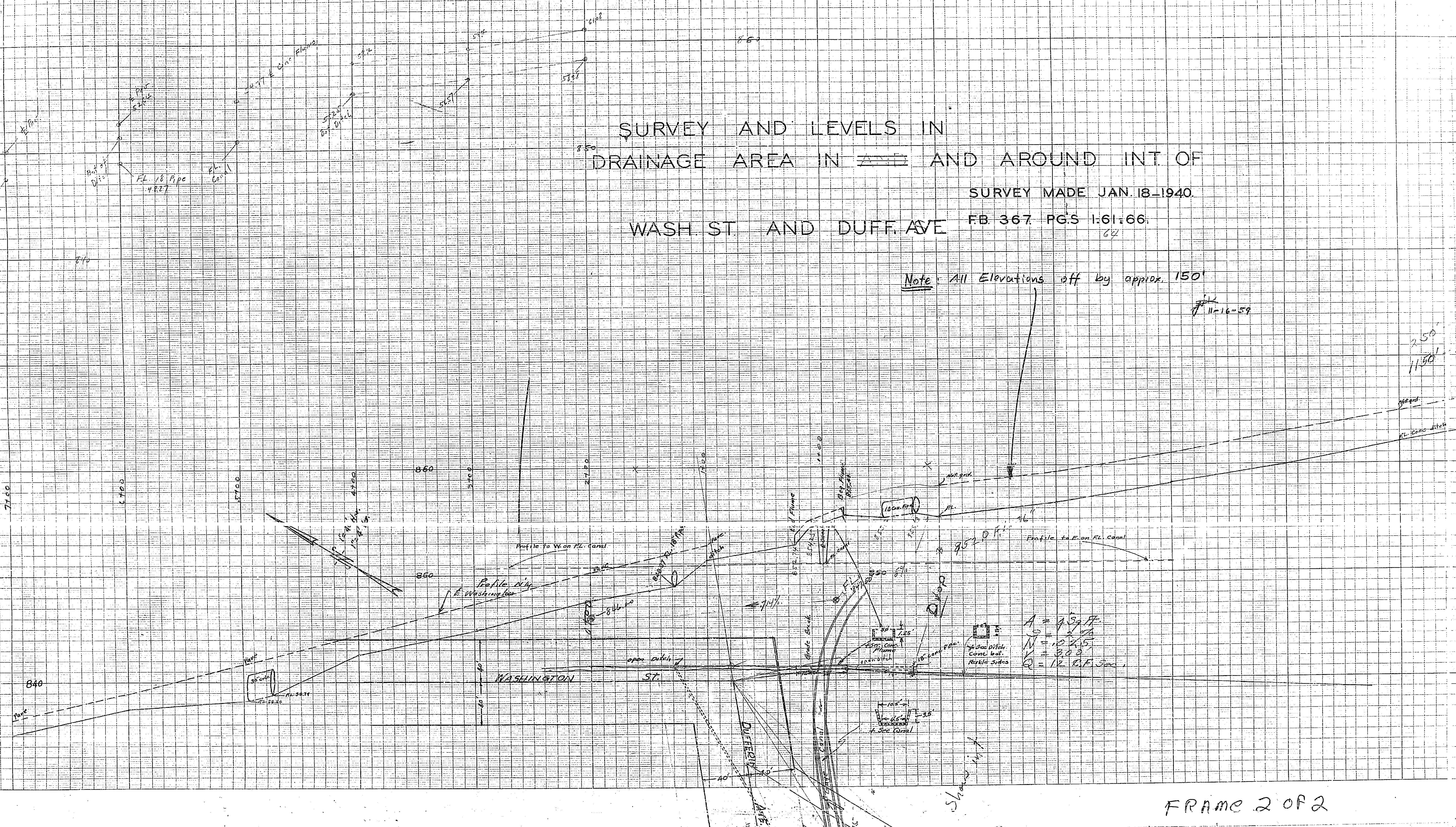
2 3 4 5 0 1 2 3 4 5

**SURVEY AND LEVELS IN  
DRAINAGE AREA IN  AND AROUND INT. OF  
WASH. ST. AND DUFF. AVE**

SURVEY MADE JAN. 18-1940.  
FB. 367 PGS. 1:61-66.  
64

Note: All Elevations off by approx. 150'

11-16-59



$A = 4.59 \text{ ft.}$   
 $S = 1.5$   
 $N = 10 \times 1.5$   
 $V = 3.00$   
 $Q = 12 \text{ C.P. Sec.}$

FRAME 2 OF 2