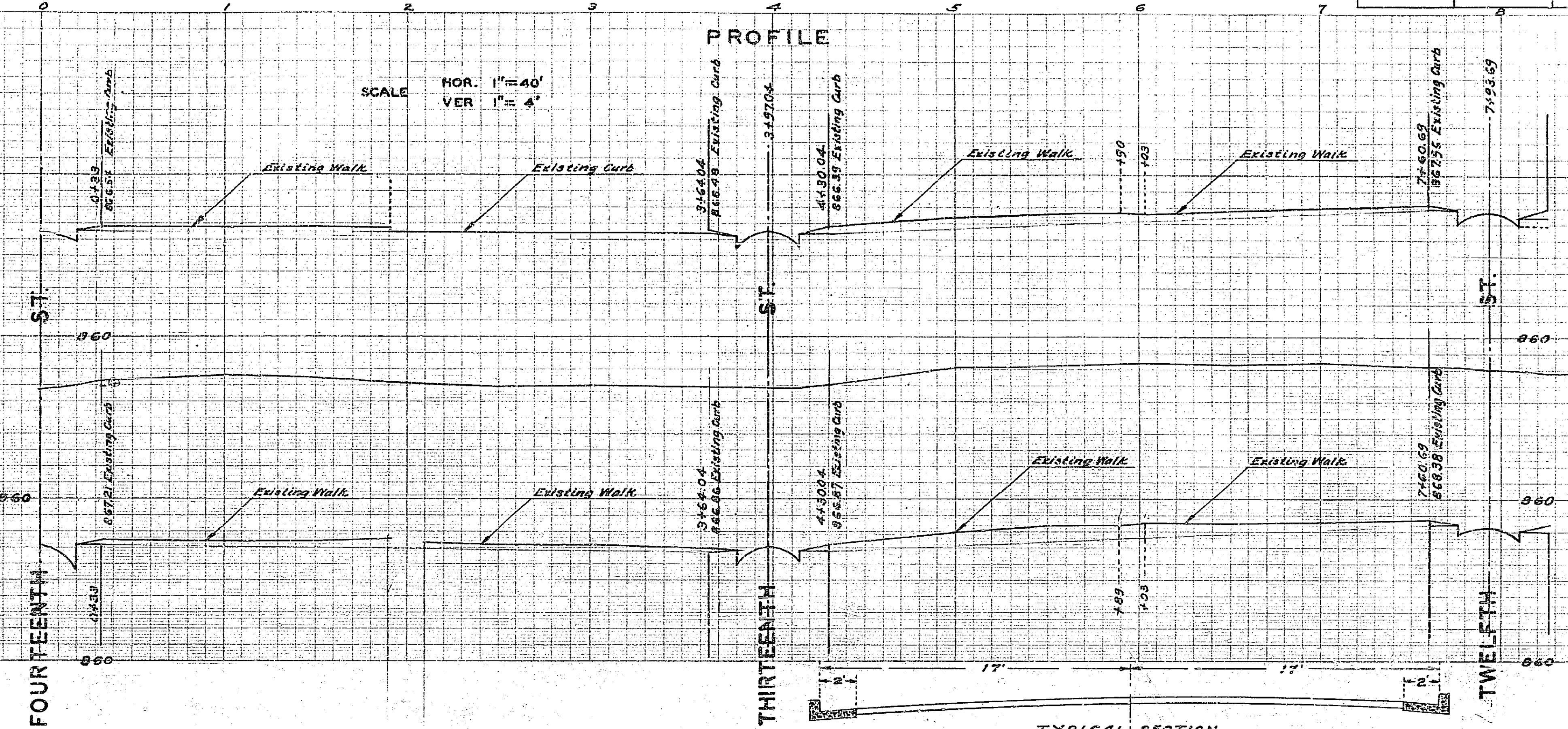


| | | | |
|--|--------------|--------------|-------|
| VINE STREET FOURTEENTH ST. TO NINTH ST. | | | |
| Drawing Number | Sheet Number | Total Sheets | Scale |
| 278 | 1 | 2 | 375 |
| Drawn by | Checked by | Approved | |

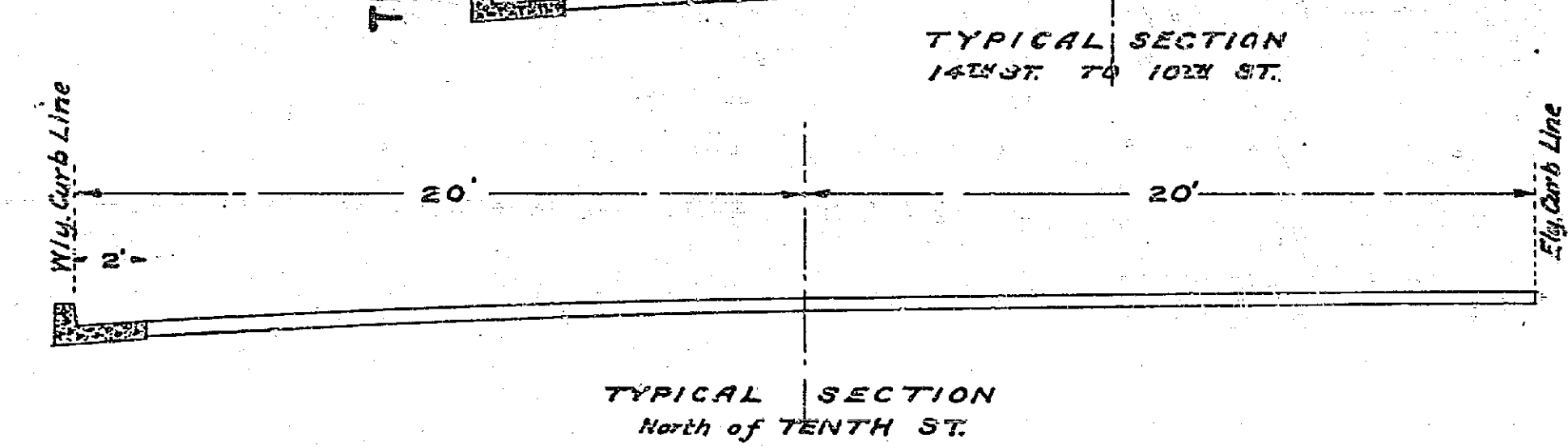


PLAN AND PROFILE OF THE PROPOSED IMPROVEMENT ON VINE STREET

FOURTEENTH ST. TO NINTH ST.

ENGINEER DEPT. RIVERSIDE CALIF. 1940.
CITY (U.S.G.S.) DATUM PLANE
FIELD BOOK 373 PAGES 30-49

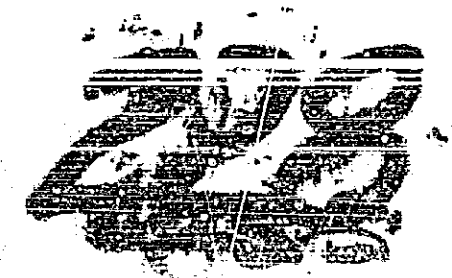
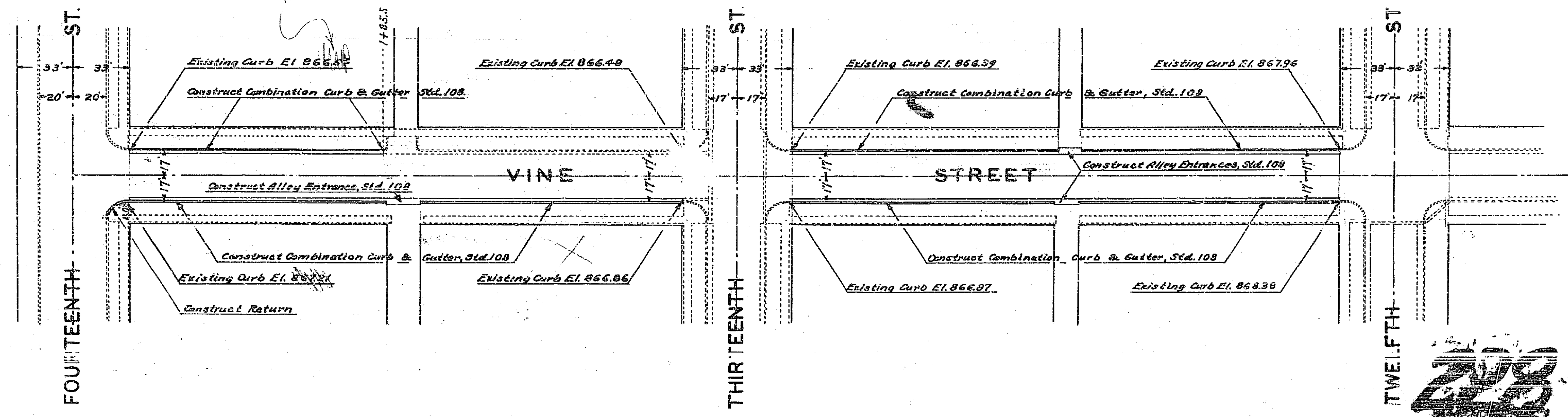
SCALE 1"=40'



APPROVED.....
CITY ENGINEER.
REG. ENG. 1312

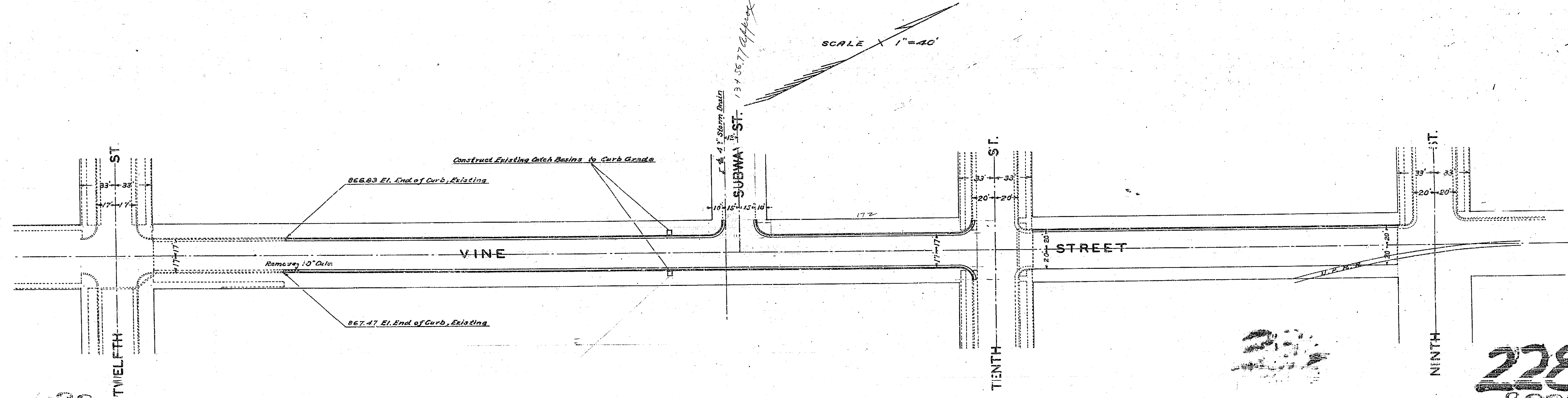
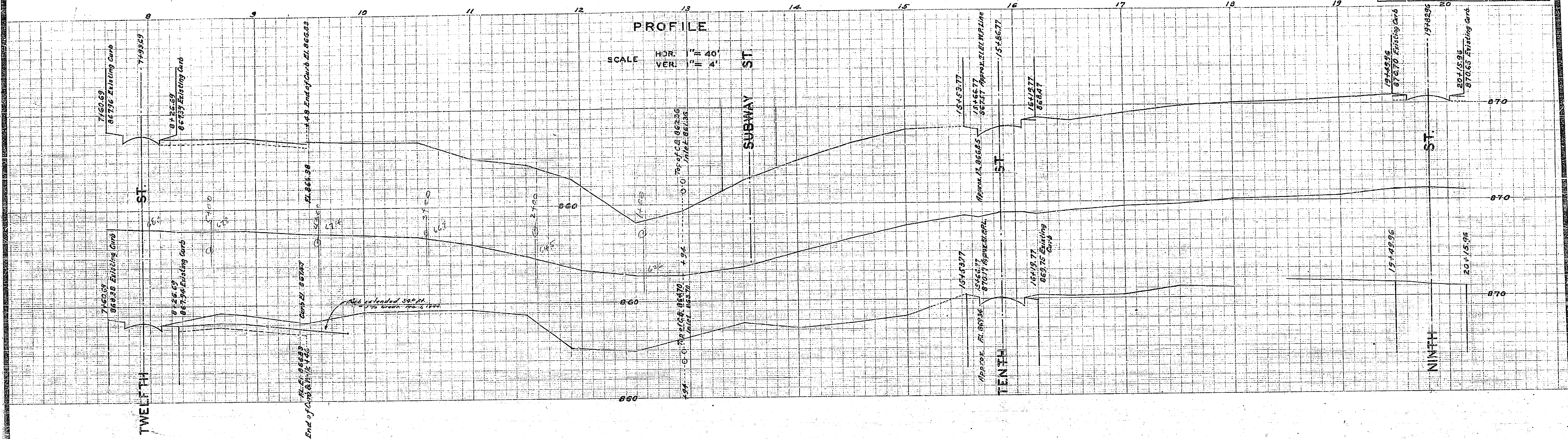
APPROVED AND ADOPTED BY THE MAYOR
AND COUNCIL OF THE CITY OF RIVERSIDE
THIS DAY OF 1940.

CITY CLERK, CITY OF RIVERSIDE.



228

| | | | |
|--------------------------------|--------------|------------------|------------|
| VINE STREET | | | |
| FOURTEENTH STREET TO NINTH ST. | | | |
| Drawing Number | Sheet Number | Number of Sheets | Field Book |
| 228 | 2 | 2 | 373 |
| Drawn by | Checked by | Approved | |



228

228