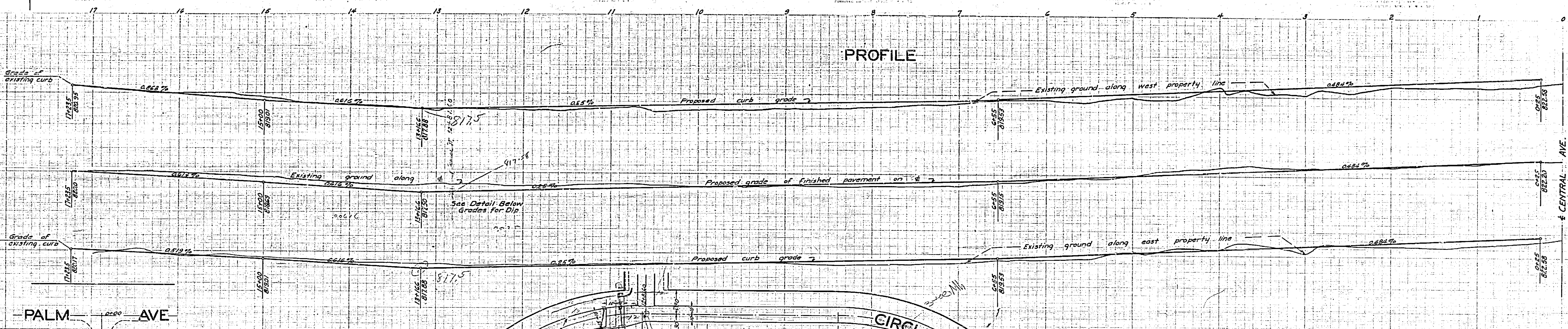
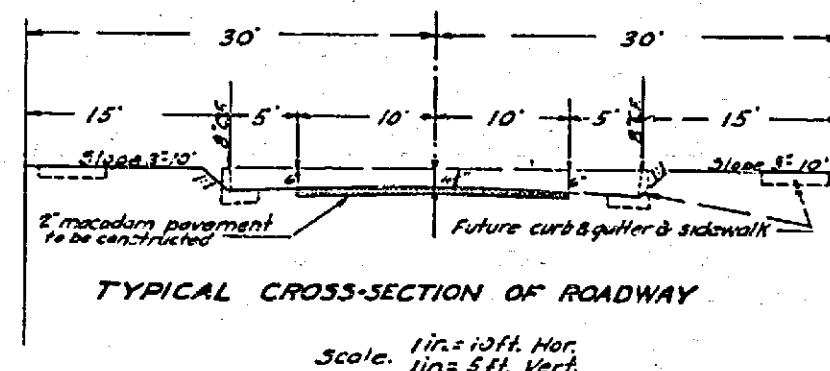
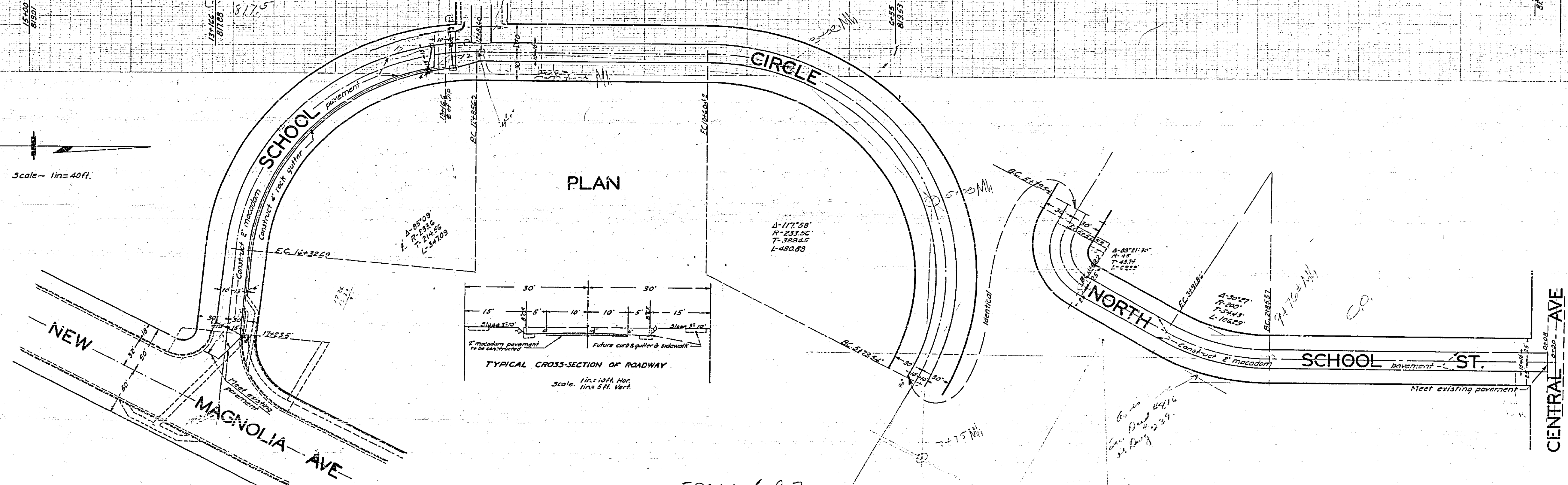


PROFILE



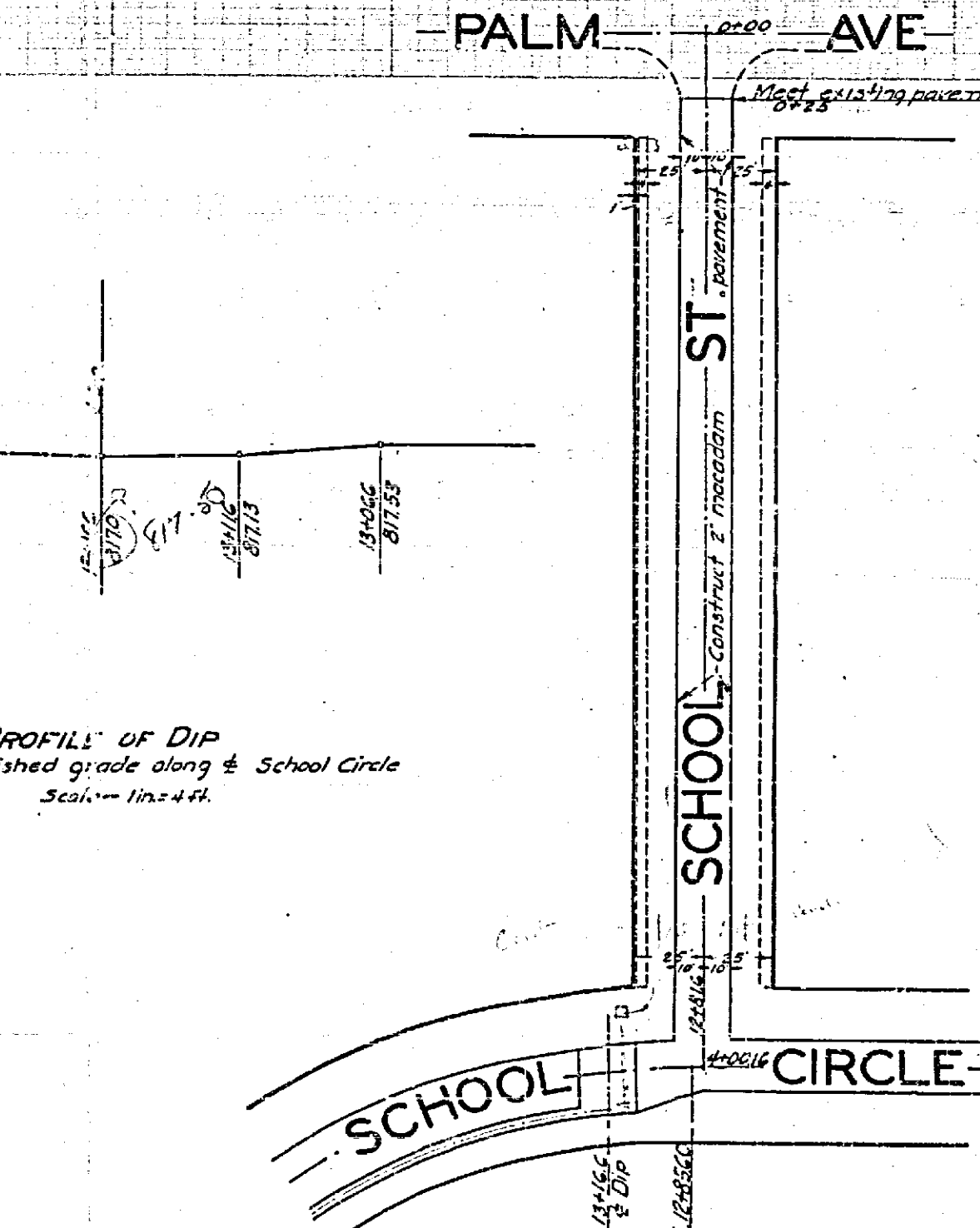
PLAN



FRAME 1 of 2

PROFILES OF DIP  
Finished grade along School Circle  
Scale: 1/4\"/>

17+00 817.5  
17+00 817.5  
17+00 817.5  
17+00 817.5



CENTRAL AVE



# PLANS AND PROFILES OF THE PROPOSED IMPROVEMENT OF NORTH SCHOOL ST., SCHOOL CIRCLE AND SCHOOL ST.

ENGINEERING DEPARTMENT CITY OF RIVERSIDE MAY 1933

PLANS PROFILES AND MAP NO. CONSISTING OF 1 SHEET

FIELD BOOK 185 PG. 36

ELEVATIONS SHOWN HEREON ARE U.S.G.S. DATUM WHICH IS THE OFFICIAL CITY DATUM PLANE AS ESTABLISHED BY ORD. NO. 551 N.S.

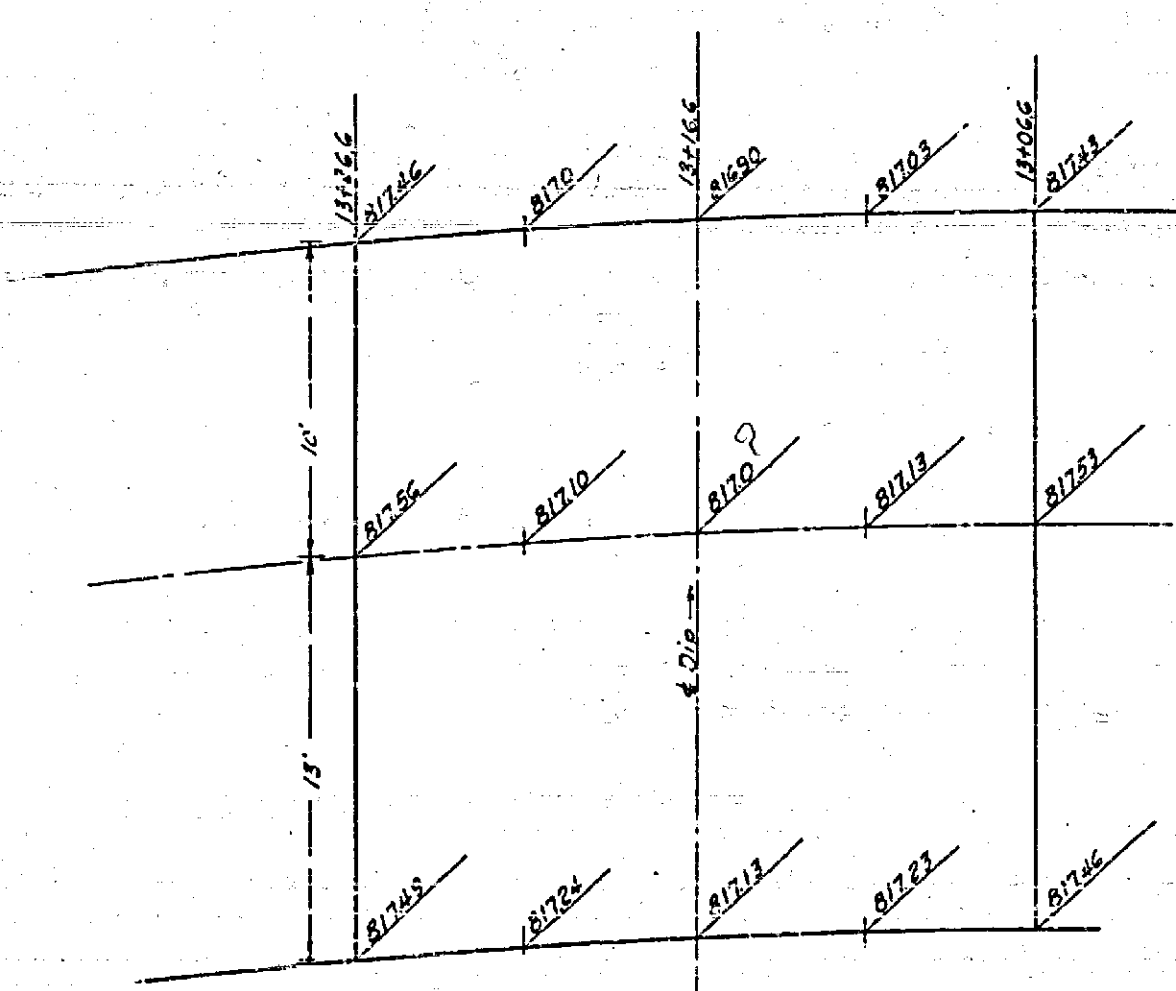
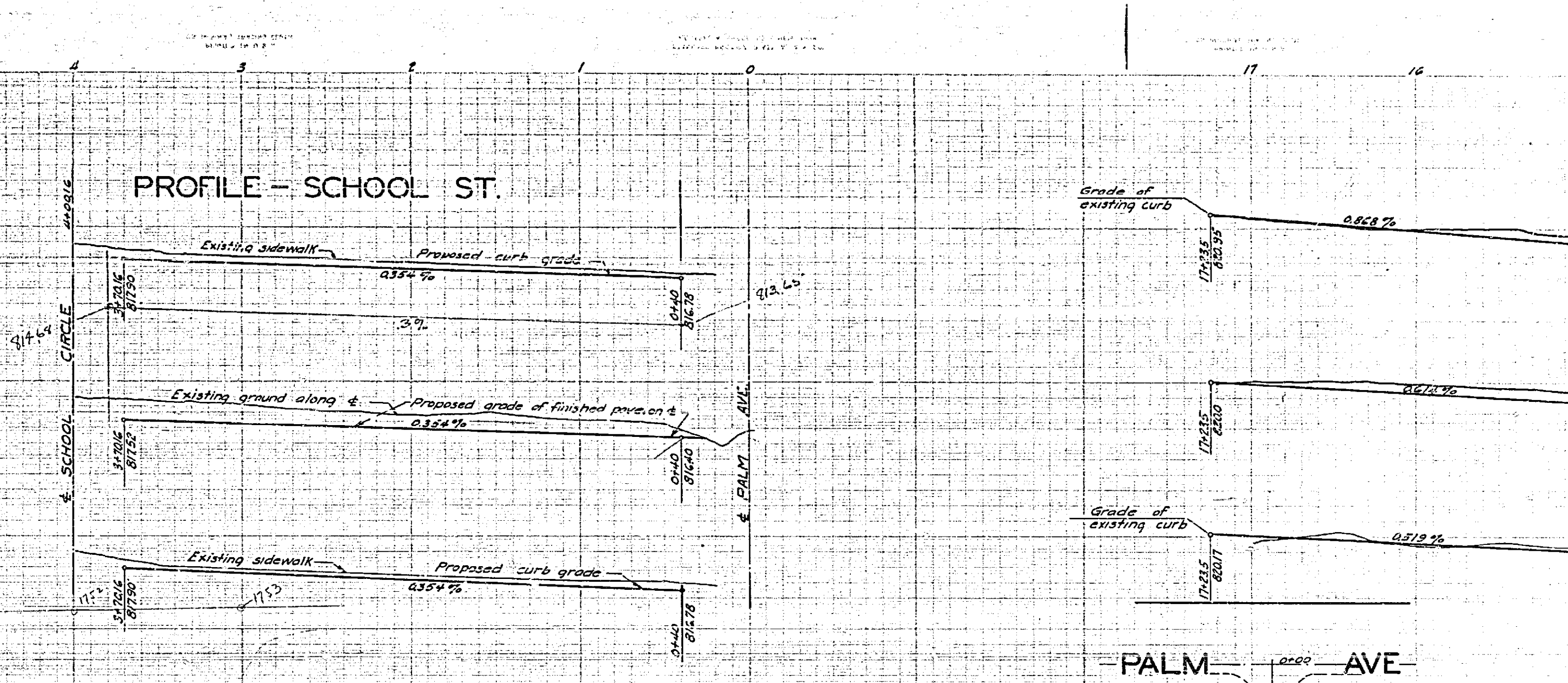
APPROVED AND ADOPTED BY THE MAYOR AND COUNCIL  
OF THE CITY OF RIVERSIDE THIS 19TH DAY OF JUNE 1934

CITY CLERK, CITY OF RIVERSIDE

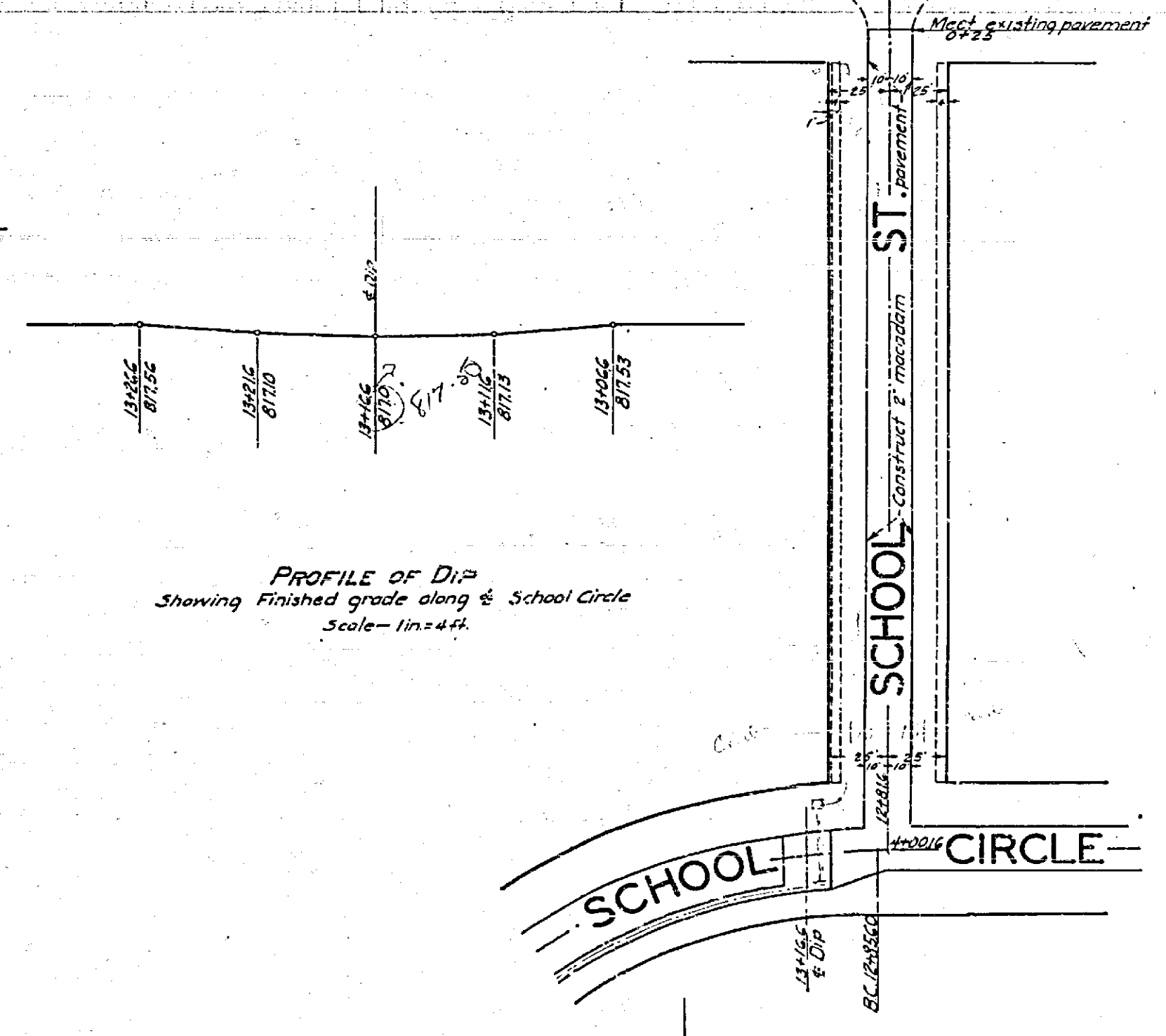
Constructed by Street Dept. June 1933

Constructed by Street Dept. June 1933

## PROFILE - SCHOOL ST.



PLAN OF DIP  
Showing finished grade elevations  
Scale - 1 in = 4 ft.



PROFILE OF DIP  
Showing finished grade along & School Circle  
Scale - 1 in = 4 ft.