

PLAN AND PROFILE

OF THE PROPOSED IMPROVEMENT OF

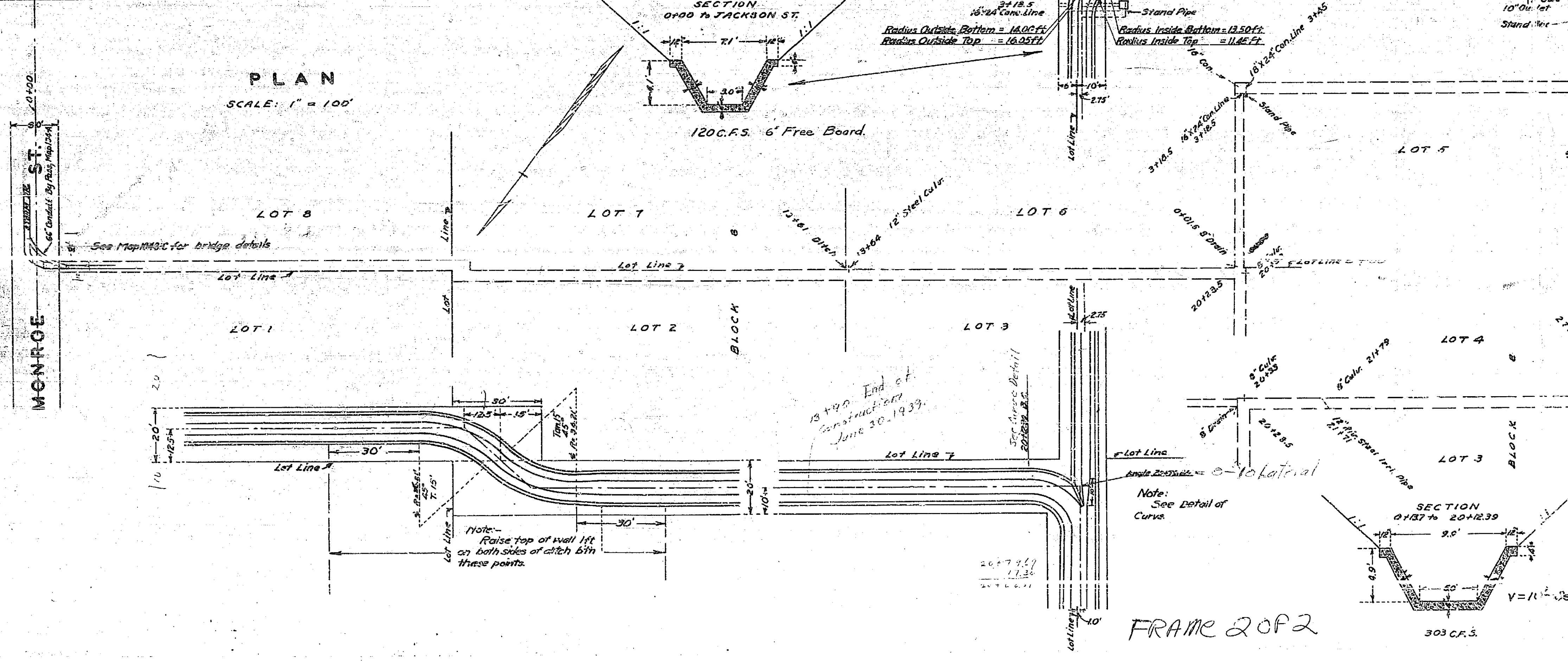
MONROE STREET STORM DRAIN

BLOCKS 1, 3 AND 8. R. L. & I. CO. LANDS
 ENG. DEPT. RIVERSIDE CALIF. 1935.
 FIELD BOOK 296 PAGES 11-49
 CITY (U.S.G.S.) DATUM PLANE

CONSTRUCTED BY
 STREET DEPT
 1937 - 1939.

APPROVED AND ADOPTED BY THE MAYOR
 AND COUNCIL OF THE CITY OF RIVERSIDE
 THIS DAY OF

CITY CLERK. CITY OF RIVERSIDE.



FRAME 2 OF 2