

MAP NO. 241-C
INDEX SHEET
AND
LOCATION PLAN
FOR THE IMPROVEMENT OF STORM DRAINS
IN

STORM DRAIN DISTRICT NO. 1

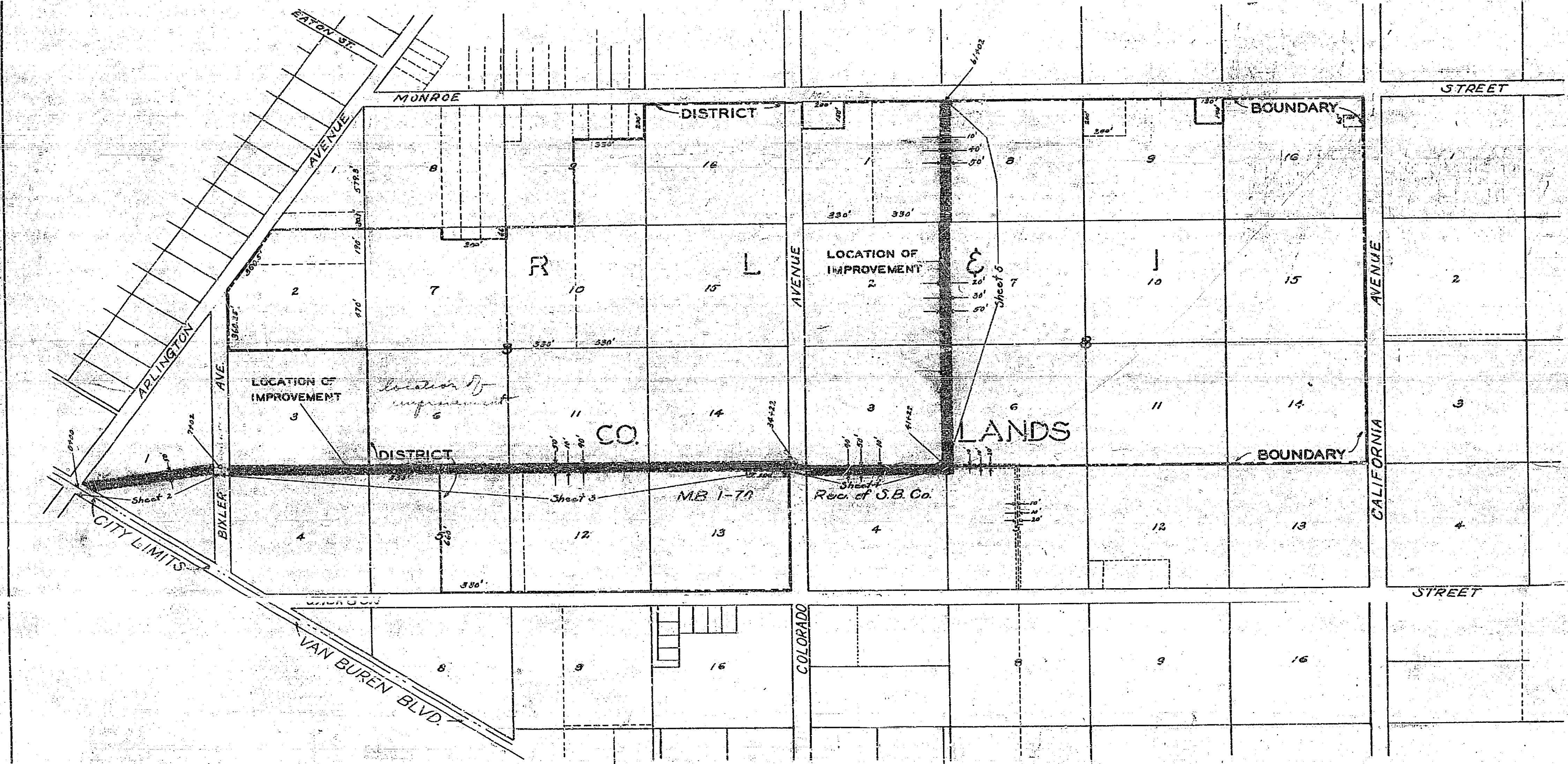
RIVERSIDE CALIFORNIA

DISTRICT BOUNDARY SHOWN THUS _____

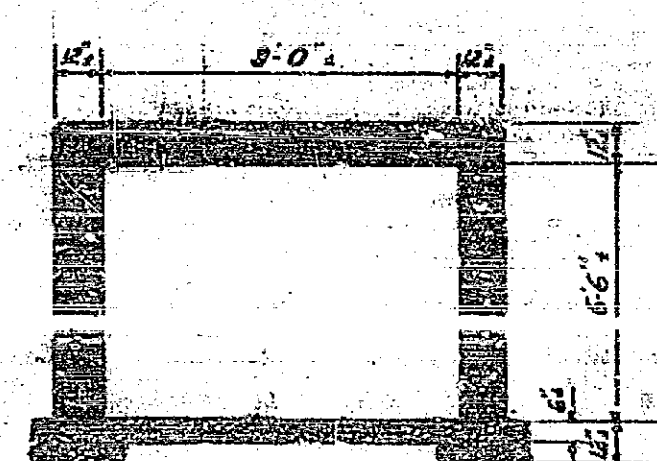
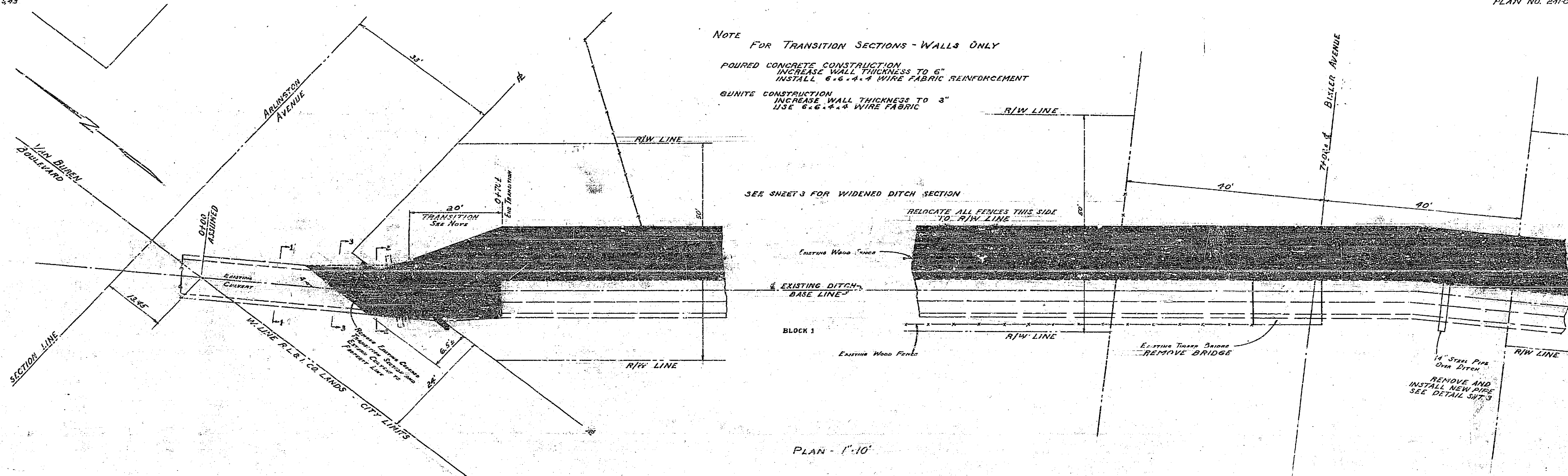
SCALE 1 IN = 300 FT.

APPROVED: *M. H. Irvine*
M. H. IRVINE - REG. C. E. NO. 3011
CITY ENGINEER

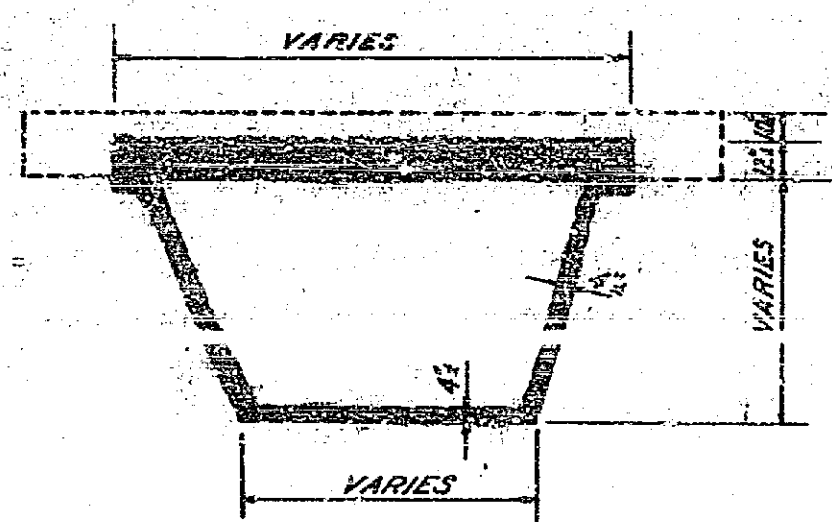
NOT BUILT



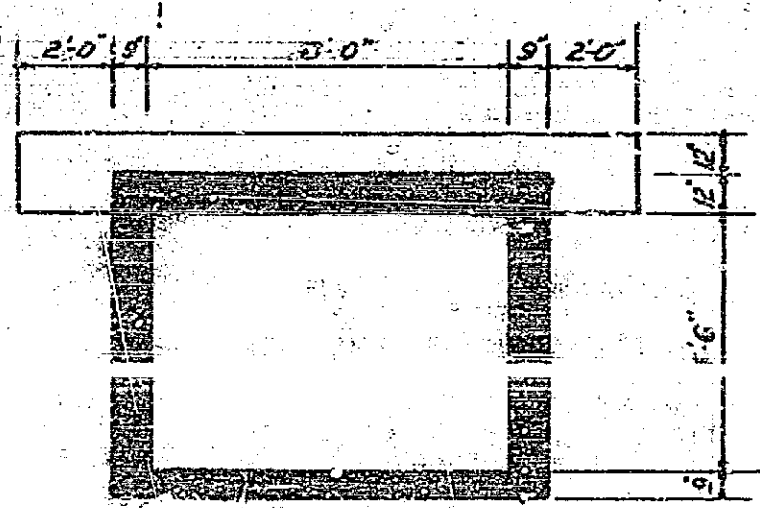
241-C



SECTION 1-1
EXISTING CULVERT
To Remain



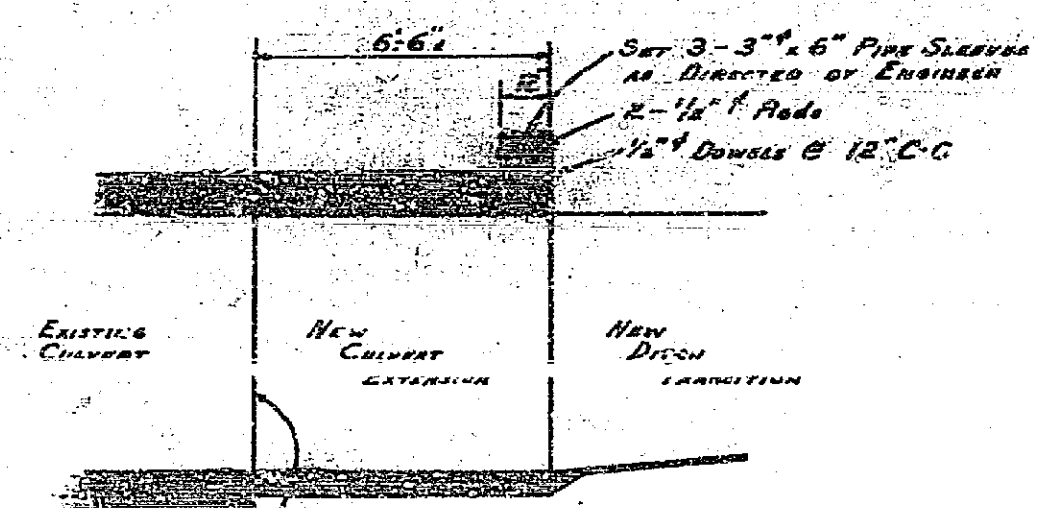
SECTION 2-2
EXISTING TRANSITION
TO BE REMOVED



STEEL
 TOP AND BOTTOM SLABS - 4 @ 2" C-C
 LONGITUDINAL 1/2 @ 8" C-C (FORMED TO NEW HANDRAIL)
 WALLS 1/2 @ 12" C-C - B.W.
 ALL STEEL 2" CLEAR

CONCRETE
CLASS A

SECTION 3-3



CUT 2'-2" KEYWAY FULL FACE

EXTEND LONGITUDINAL WALL AND BOTTOM STEEL @ 12" C-C AND TIE INTO TRANSITION

SEE 3-3" x 6" PIPE SLAB AS DIRECTED BY ENGINEER

2-1/2" F. RIDE

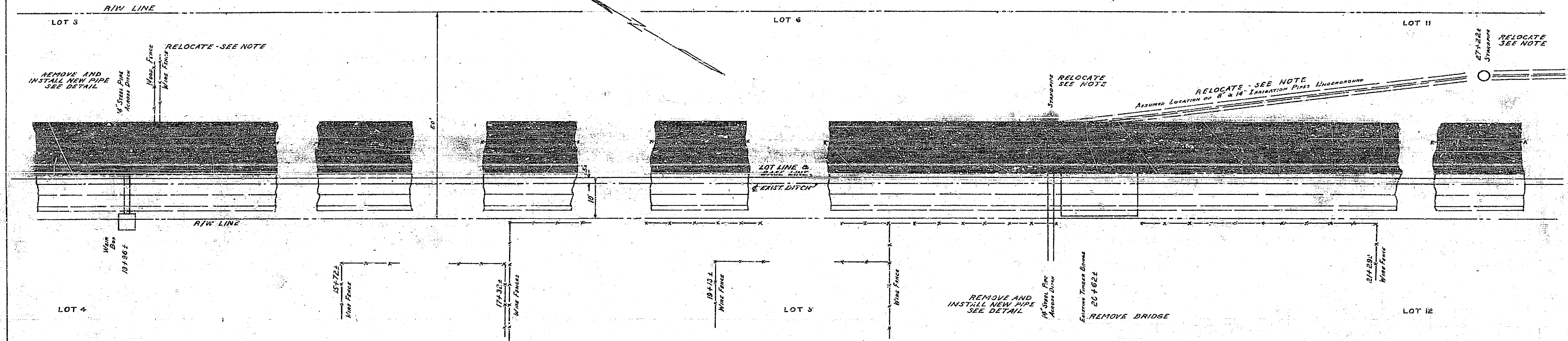
1/2" DOWELS @ 12" C-C

SECTION 4-4
PROPOSED CULVERT EXTENSION

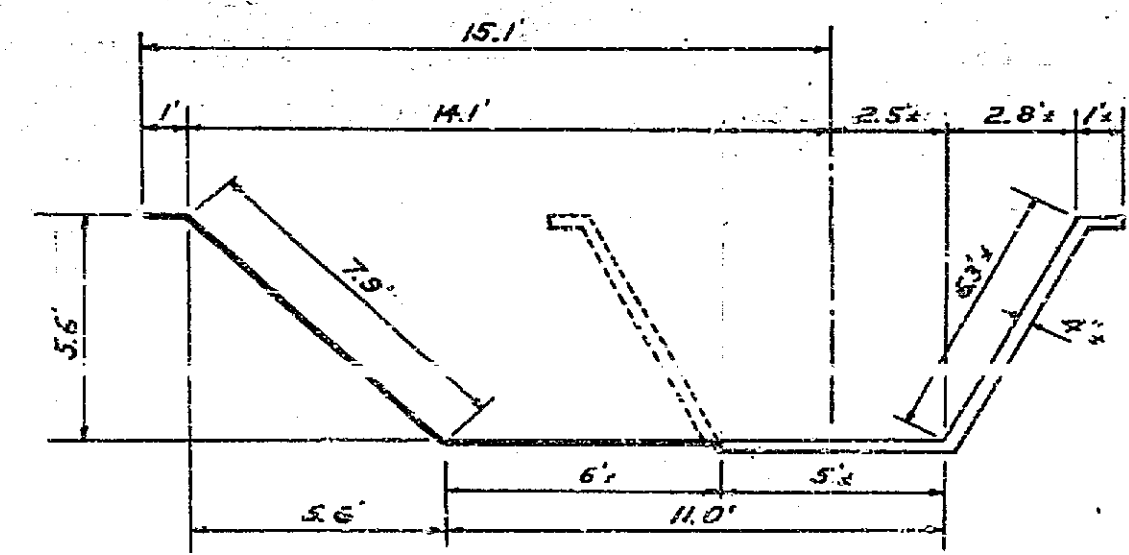
SECTIONS 1/4" = 1'-0"

241-C

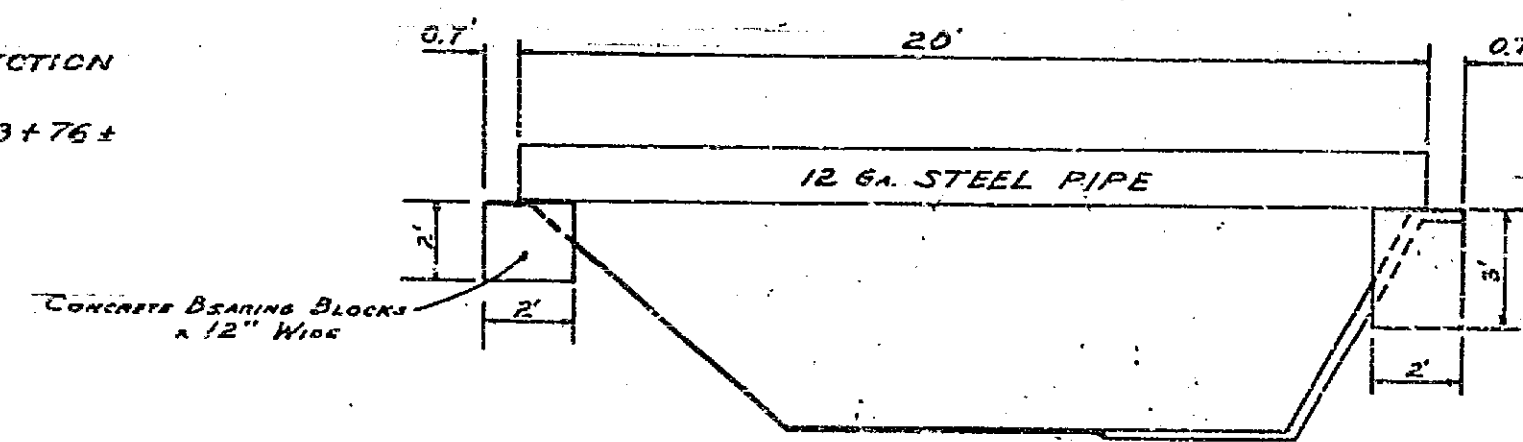
NOTE
 RELOCATE STANDPIPES AND IRRIGATION LINES
 BACK OF R/W LINE TWO SIDES
 RELOCATE ALL FENCES THIS SIDE TO R/W LINE
 EXTEND IRRIGATION LINE CROSSINGS ACROSS R/W
 IN STEEL OR REINFORCED CONCRETE PIPE
 WHERE SUBSURFACE DRAINS ARE ENCOUNTERED ENTRENCH
 INTO DITCH, CUT BACK TO NEW DITCH WALL AND
 MAINTAIN IN OPERATION



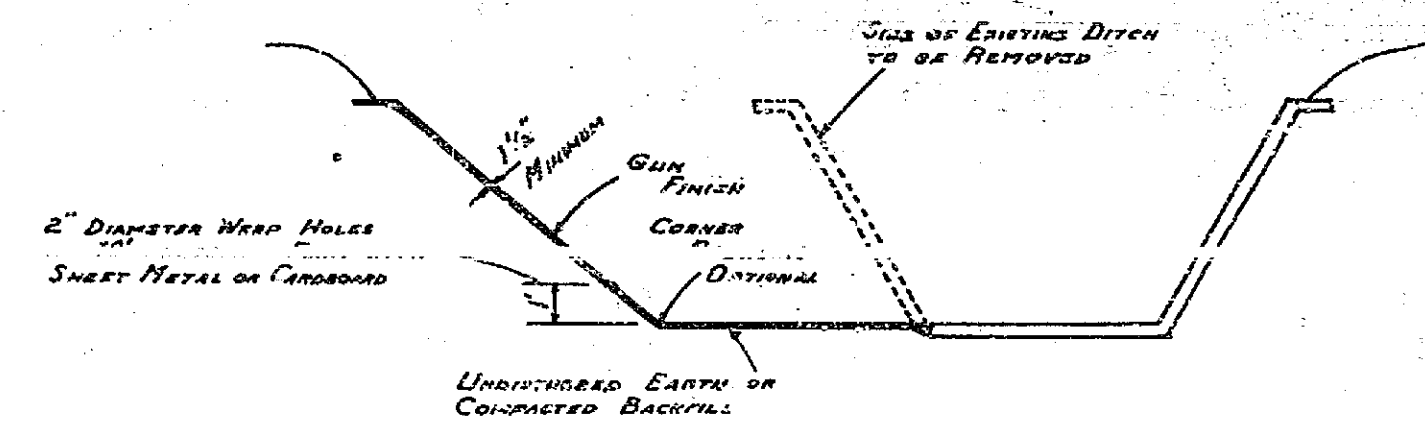
PLAN 1"=10'



PROPOSED DITCH SECTION
 0+70 ± TO 33+76 ±

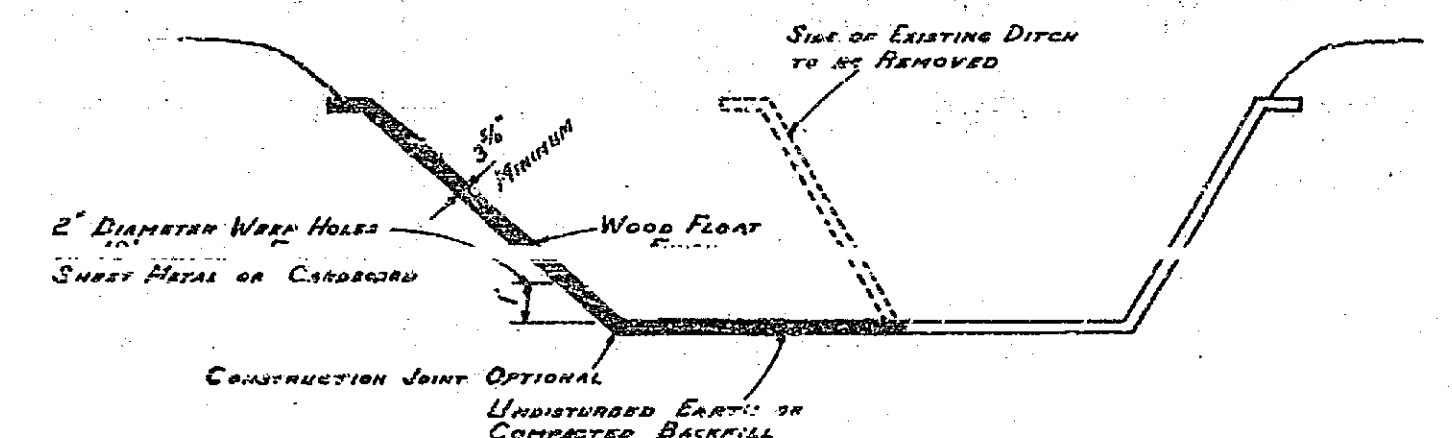


PROPOSED IRRIGATION LINE CROSSINGS
 STATIONS - 7+30 ± - 13+96 ± - 20+00 ±
 New Pipe Sizes to be the Same as Existing Pipe



TYPICAL GUNITE SECTION
 REINFORCED WITH 4x4x10 WIRE FABRIC
 ALTERNATE No. 1

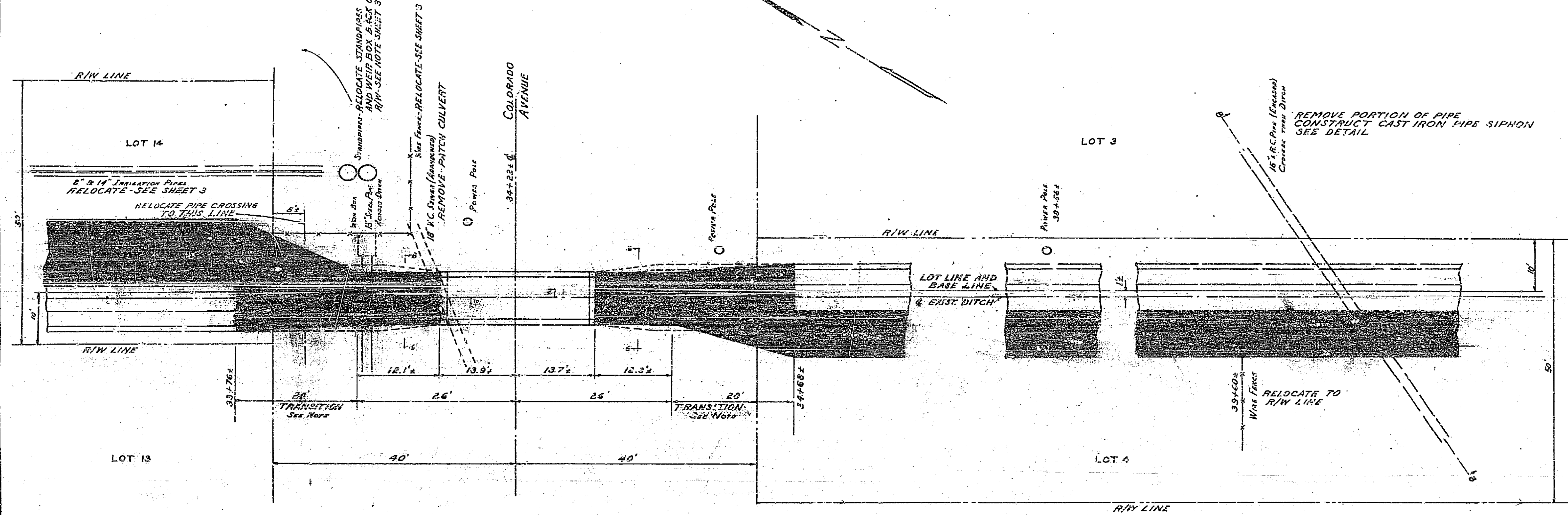
SECTIONS 1/4" = 1'-0"



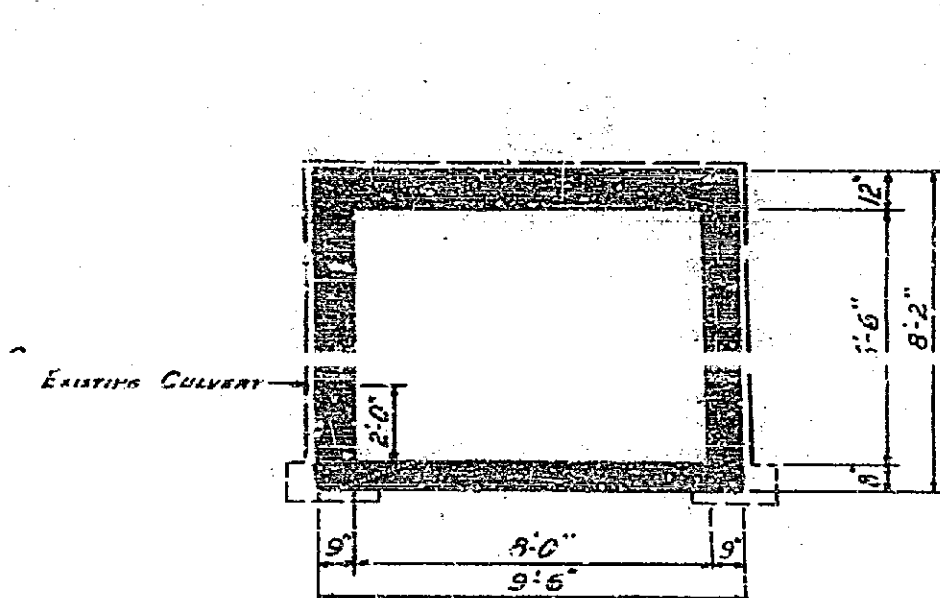
TYPICAL UNREINFORCED CONCRETE SECTION
 ALL DITCH AND TRANSITION SECTIONS TO BE CLASS 'C' CONCRETE
 ALTERNATE No. 2

241-C

NOTE
 FOR TRANSITION SECTIONS - WALLS ONLY
 SEE NOTE SHEET 2



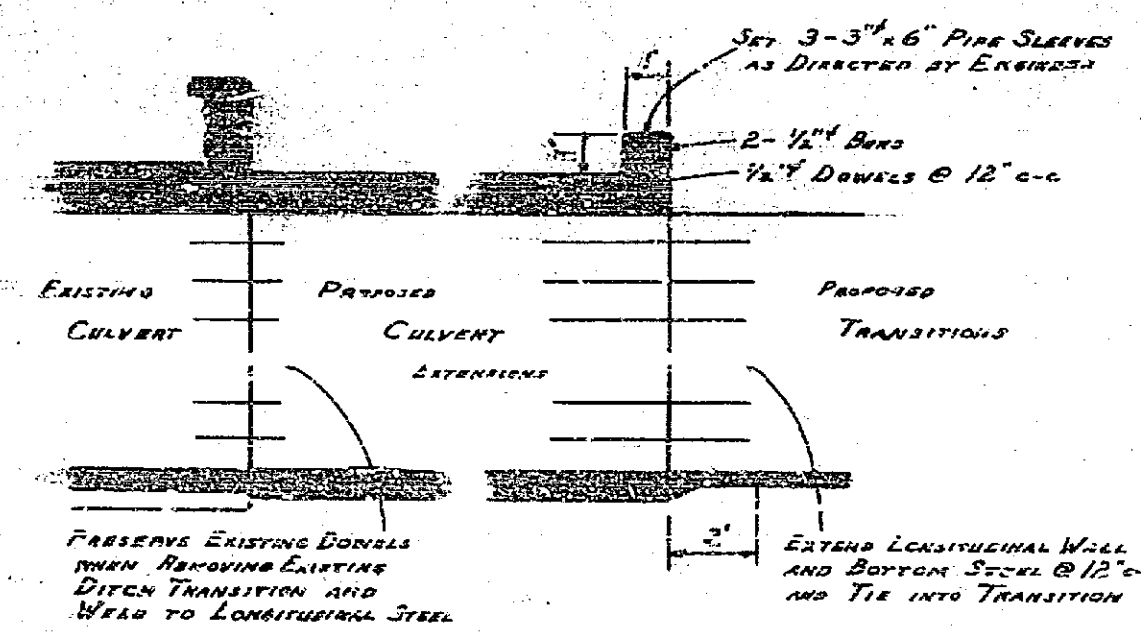
PLAN 1"=10'



STEEL
 Top and Bottom Slabs
 Longitudinal - 1/4" @ 6" c-c.
 Transverse - 3/4" @ 6" c-c Hooped
 Walls
 1/2" @ 12" c-c, max.
 All Steel 2" Clean

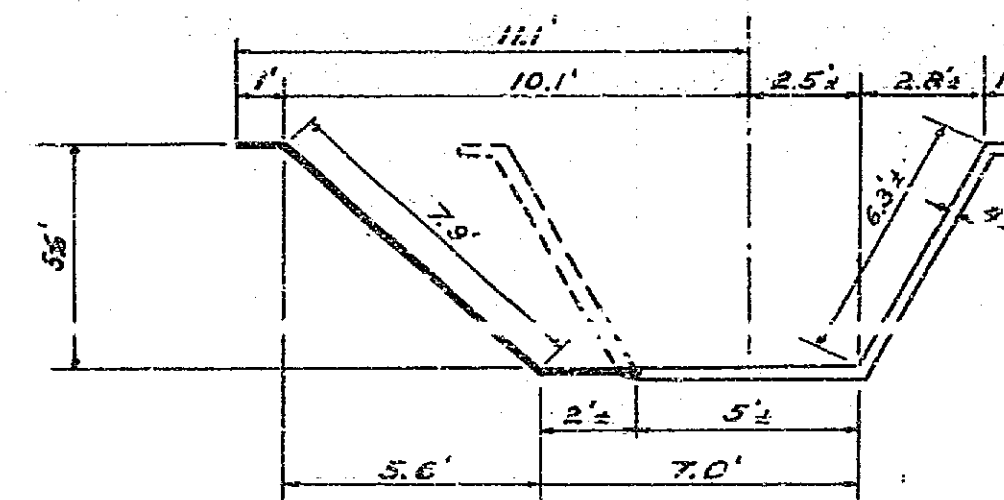
CONCRETE
 Class A

SECTION 6-6



PROPOSED CULVERT EXTENSIONS

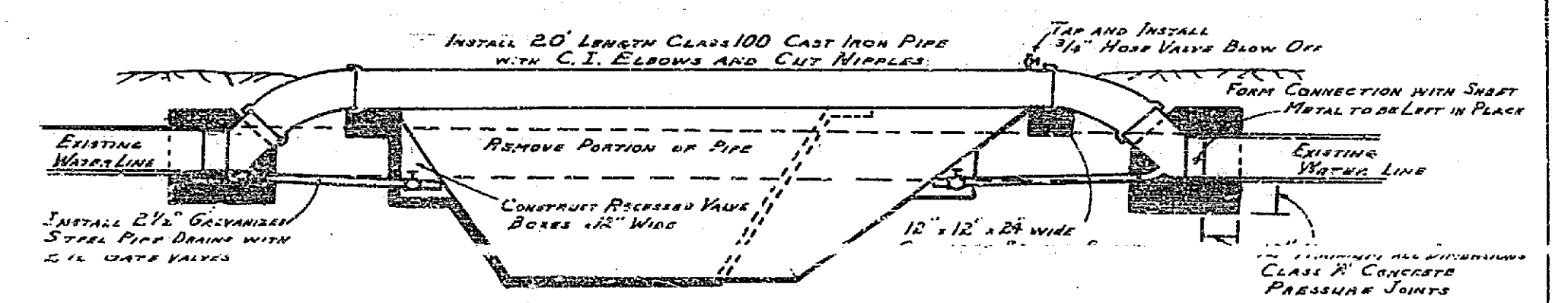
SECTION 7-7



PROPOSED DITCH SECTION

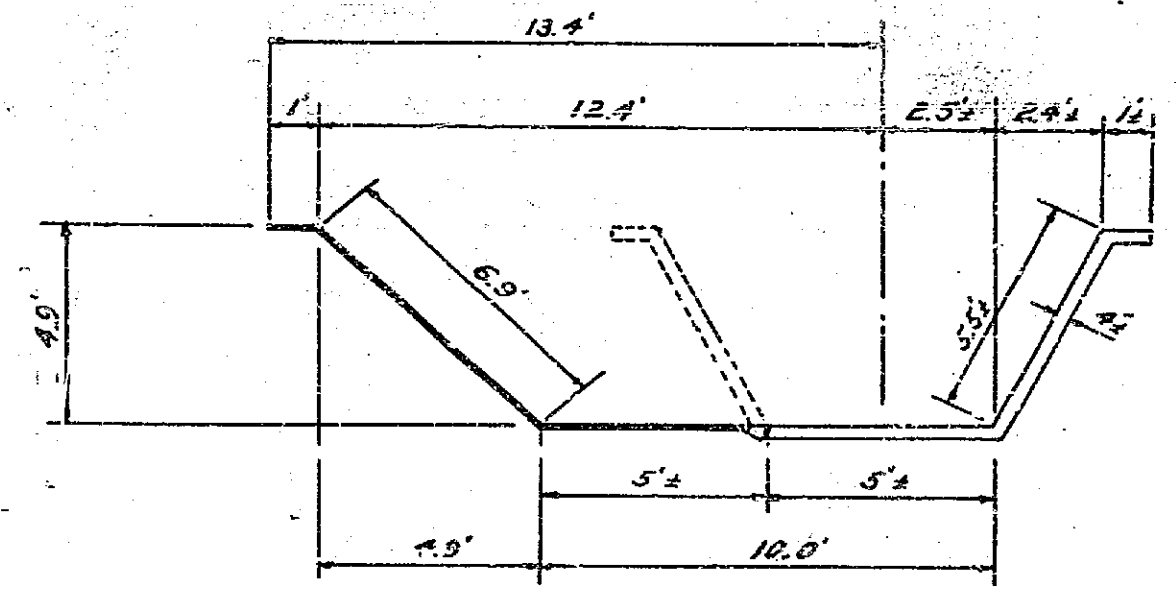
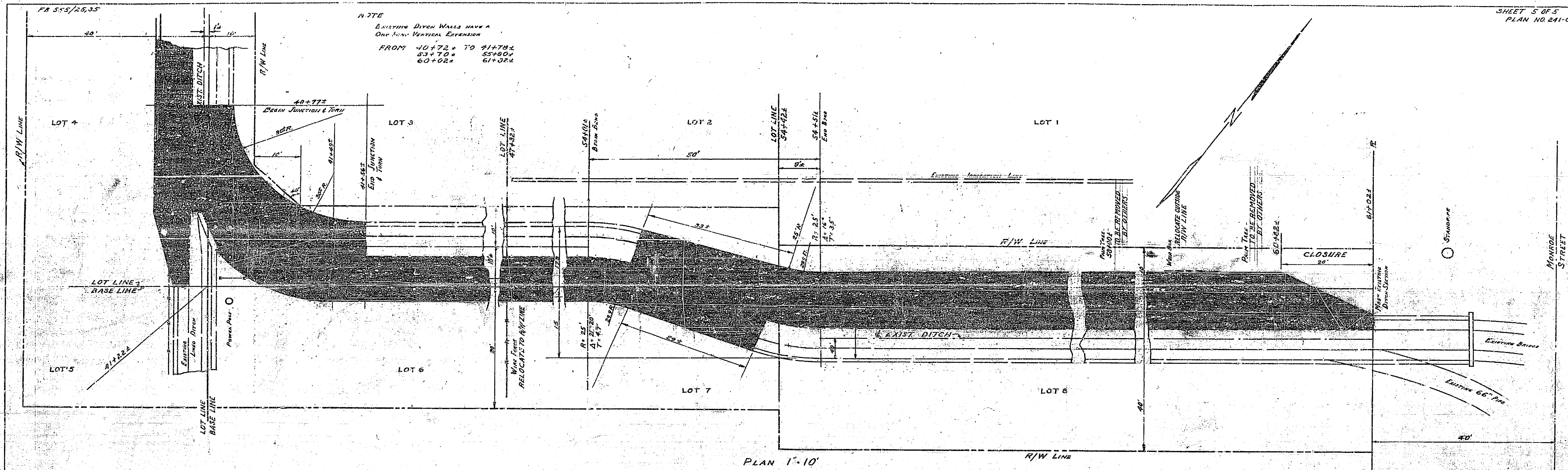
44788 ± 10477 ±

SECTIONS 1/4"=1'-0"

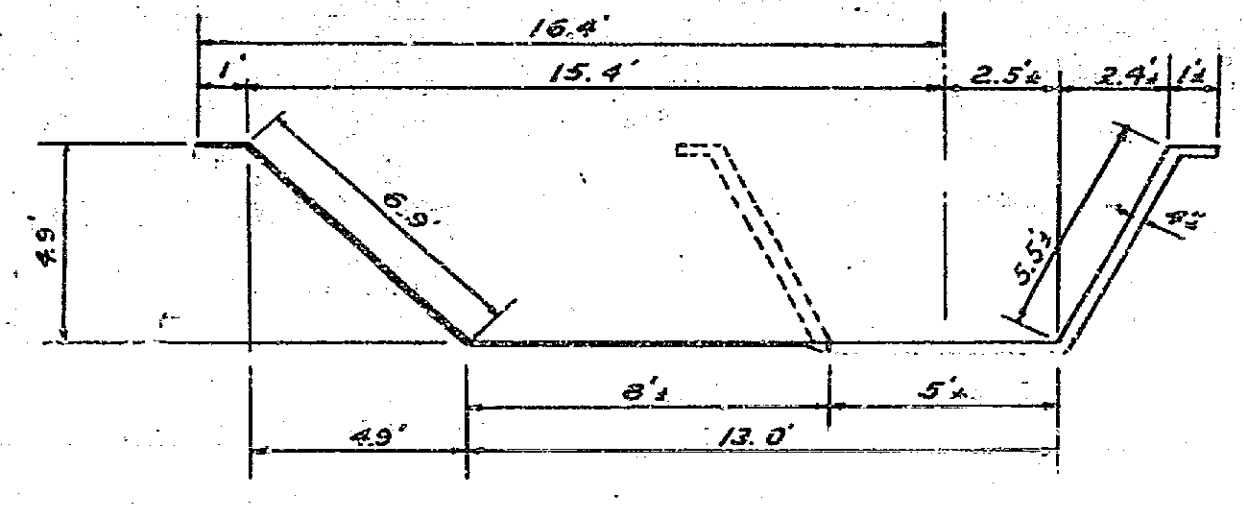


SECTION 8-8
 PROPOSED CAST IRON PIPE SIPHON

241-C



PROPOSED DITCH SECTION
41+56.2 TO 54+01.2



PROPOSED DITCH SECTION
54+51.2 TO 60+82.2

SECTIONS 1/4" = 1'-0"

241-C