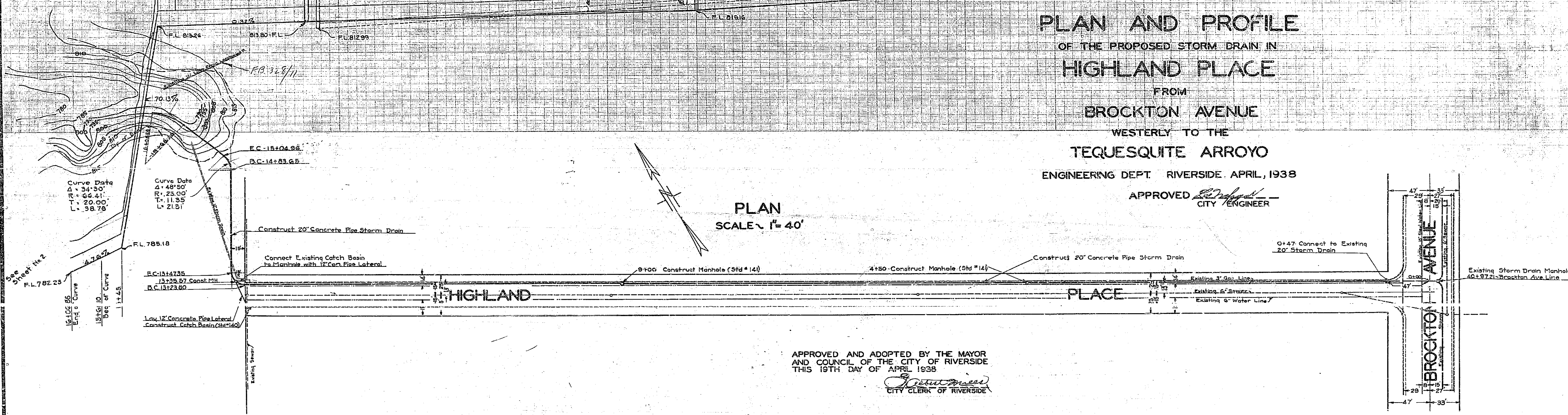
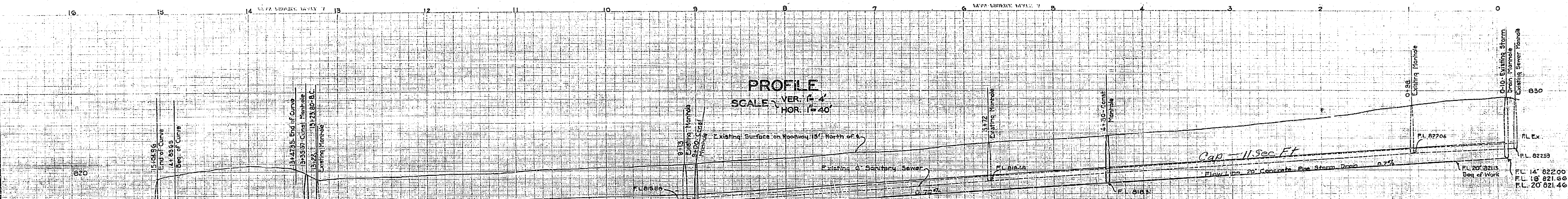


Highland Place Storm Drain			
Drawing Number	Sheet Number	Total Sheets	Field Book
B26-J	1	2	330
Drawn	Checked	Approved	
Arthur N. Field			
April 9, 1938			

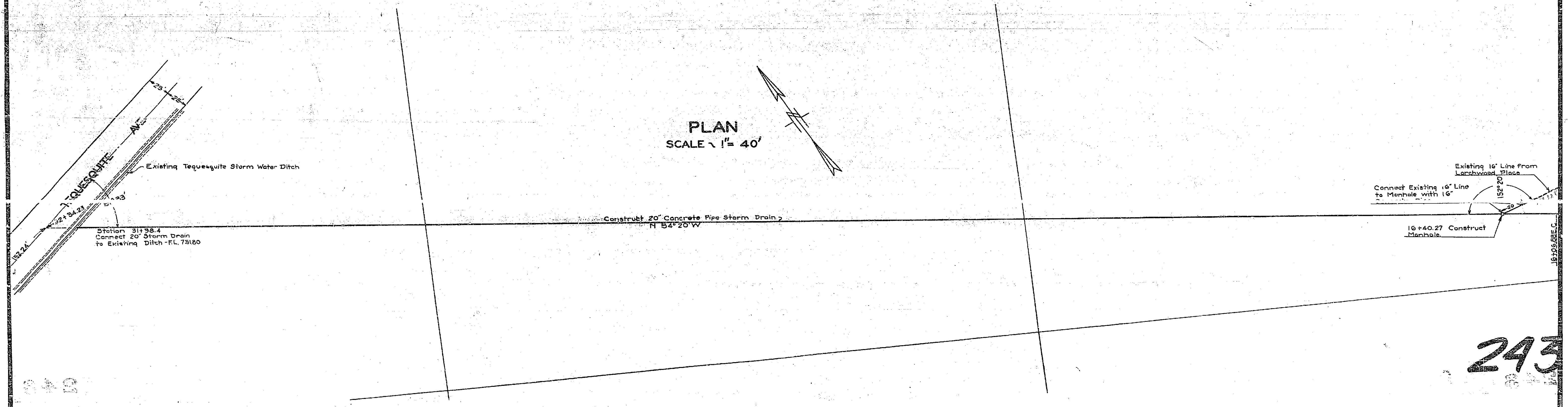
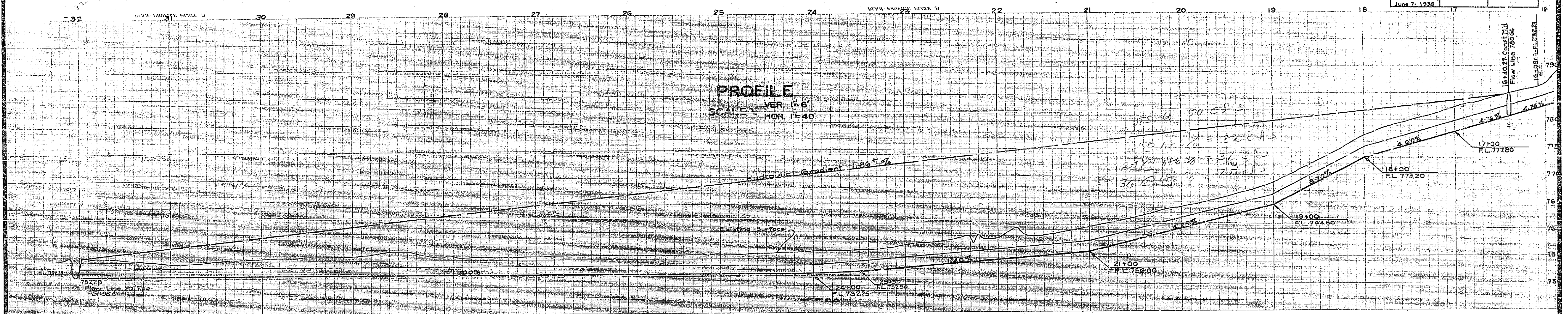


PLAN AND PROFILE
 OF THE PROPOSED STORM DRAIN IN
HIGHLAND PLACE
 FROM
BROCKTON AVENUE
 WESTERLY TO THE
TEQUESQUITE ARROYO

ENGINEERING DEPT. RIVERSIDE, APRIL, 1938
 APPROVED *E. J. [Signature]*
 CITY ENGINEER

APPROVED AND ADOPTED BY THE MAYOR
 AND COUNCIL OF THE CITY OF RIVERSIDE
 THIS 19TH DAY OF APRIL 1938
[Signature]
 CITY CLERK OF RIVERSIDE

Highland Place Storm Drain			
Drawing Number	Sheet Number	Field Books	Boats
920-7	2	2	930-930
Drawn	Checked	Approved	
Arthur H. Riley			
June 7, 1928			



243