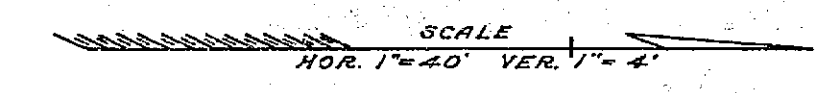


PLAN AND PROFILE
 OF THE PROPOSED IMPROVEMENT OF
OTTAWA AVENUE

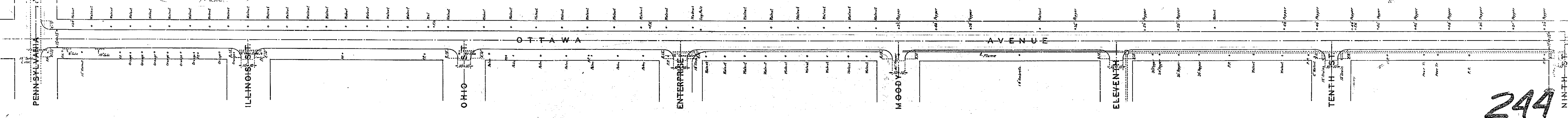
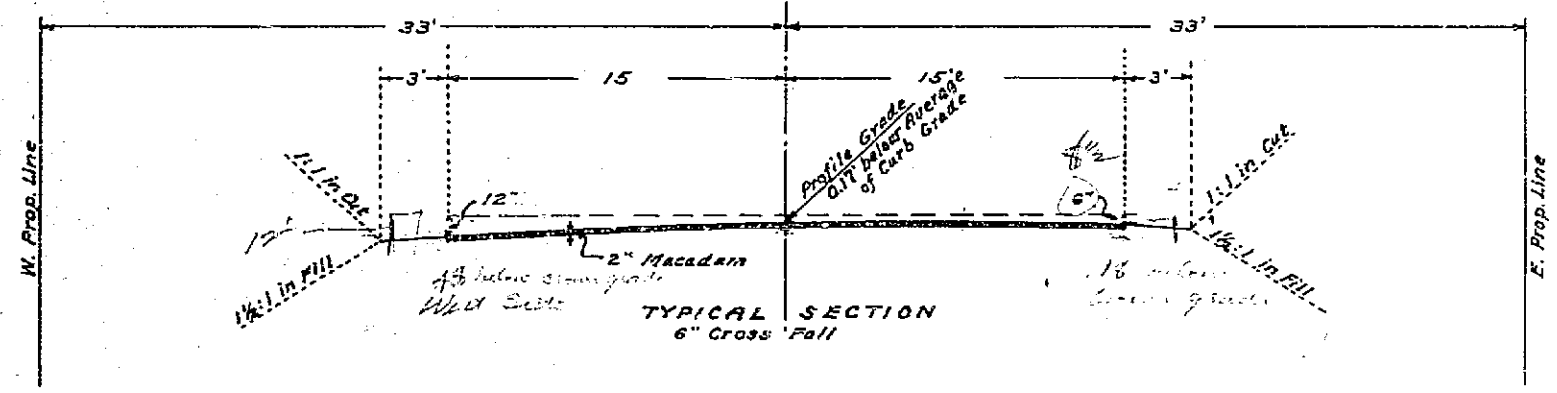
BETWEEN PENNSYLVANIA AVE. & LINDEN ST.
 ENG. DEPT. CITY OF RIVERSIDE 1935.

CITY (U. S. G. S.) DATUM PLANE
 FIELD BOOK 306 PAGES 2-57
 SHEET ONE OF TWO SHEETS

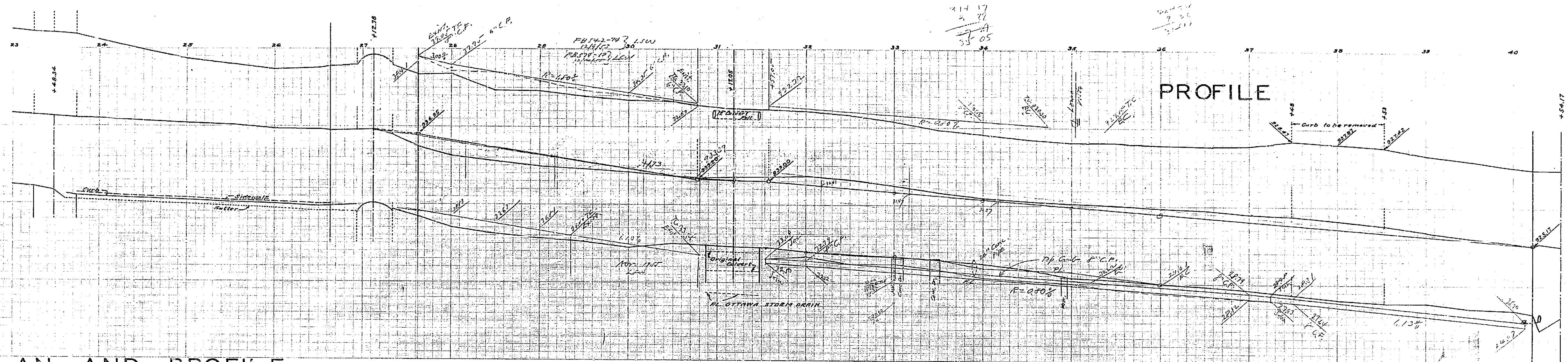


APPROVED AND ADOPTED BY THE MAYOR
 AND COUNCIL OF THE CITY OF RIVERSIDE
 THIS 4TH DAY OF JUNE 1935.
 CITY CLERK, CITY OF RIVERSIDE.

PLAN



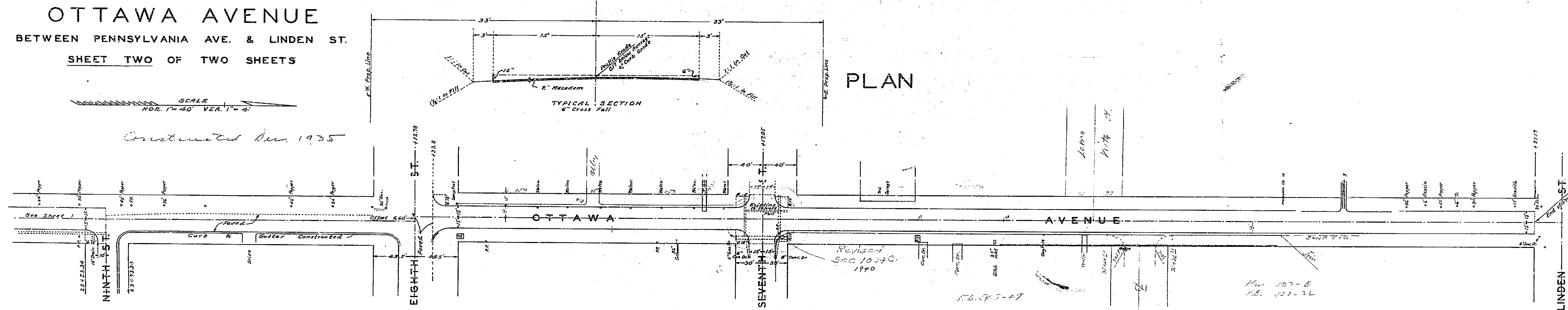
244



PLAN AND PROFILE
 OF THE PROPOSED IMPROVEMENT OF
OTTAWA AVENUE
 BETWEEN PENNSYLVANIA AVE. & LINDEN ST.
 SHEET TWO OF TWO SHEETS

SCALE
 HOR. 1" = 40' VER. 1" = 4'

Constructed Dec. 1935



244