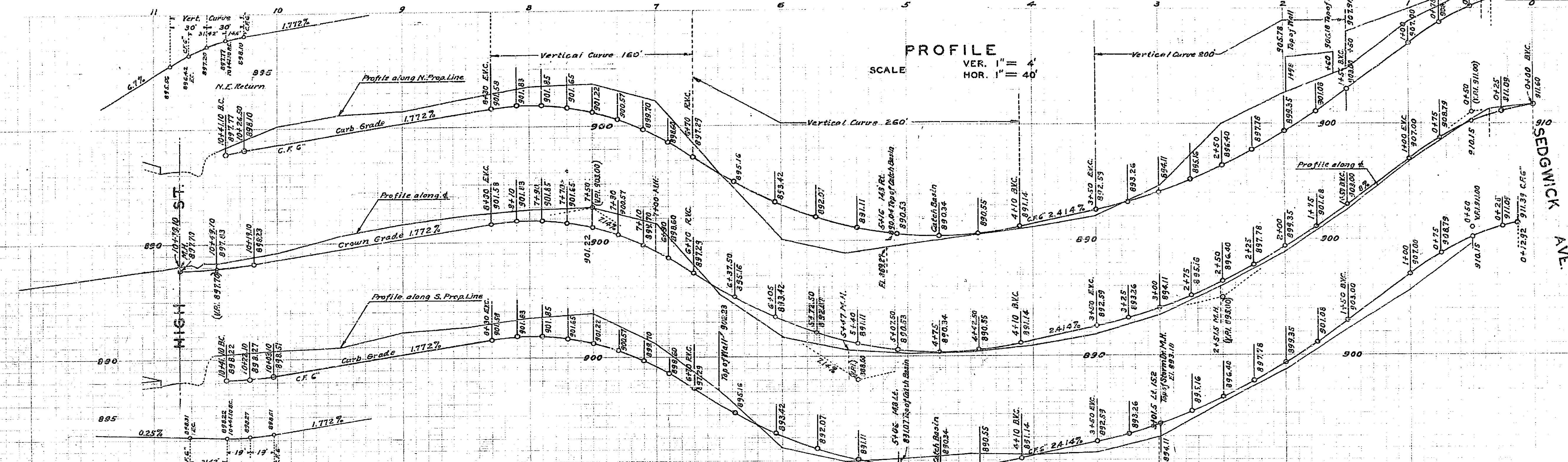
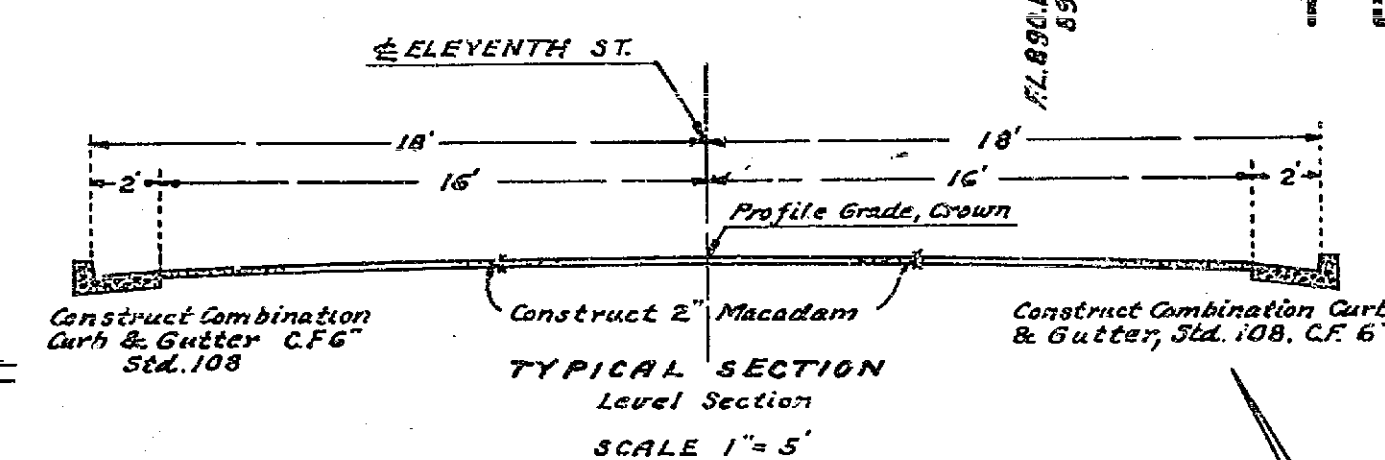


ELEVENTH STREET SEDGWICK AVE. TO HIGH ST.		
Drawing Number	Sheet	Total Sheets
378	1	378
Drawn by	Checked by	Approved
W.E.H. 7/14		



PLANS AND PROFILES
OF THE PROPOSED IMPROVEMENT OF
ELEVENTH STREET
SEDGWICK AVE. TO HIGH ST.

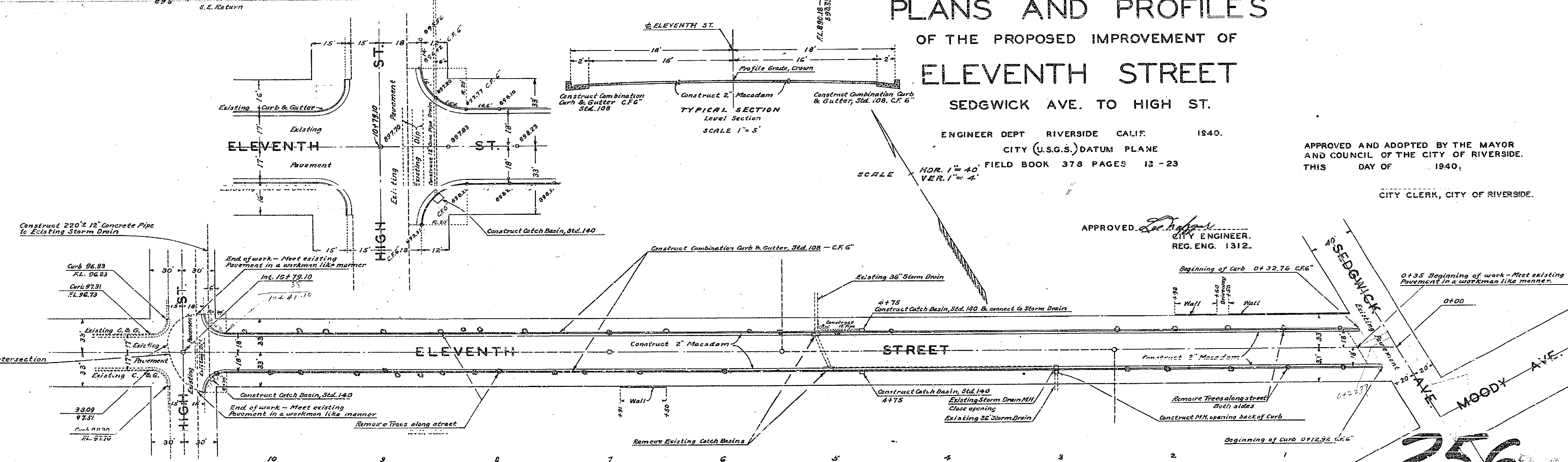


ENGINEER DEPT RIVERSIDE CALIF. 1940.
CITY (U.S.G.S.) DATUM PLANE
FIELD BOOK 378 PAGES 13-23

APPROVED AND ADOPTED BY THE MAYOR
AND COUNCIL OF THE CITY OF RIVERSIDE.
THIS DAY OF 1940.

CITY CLERK, CITY OF RIVERSIDE.

APPROVED *Lee H. Johnson*
CITY ENGINEER.
REG. ENG. 1312.



256