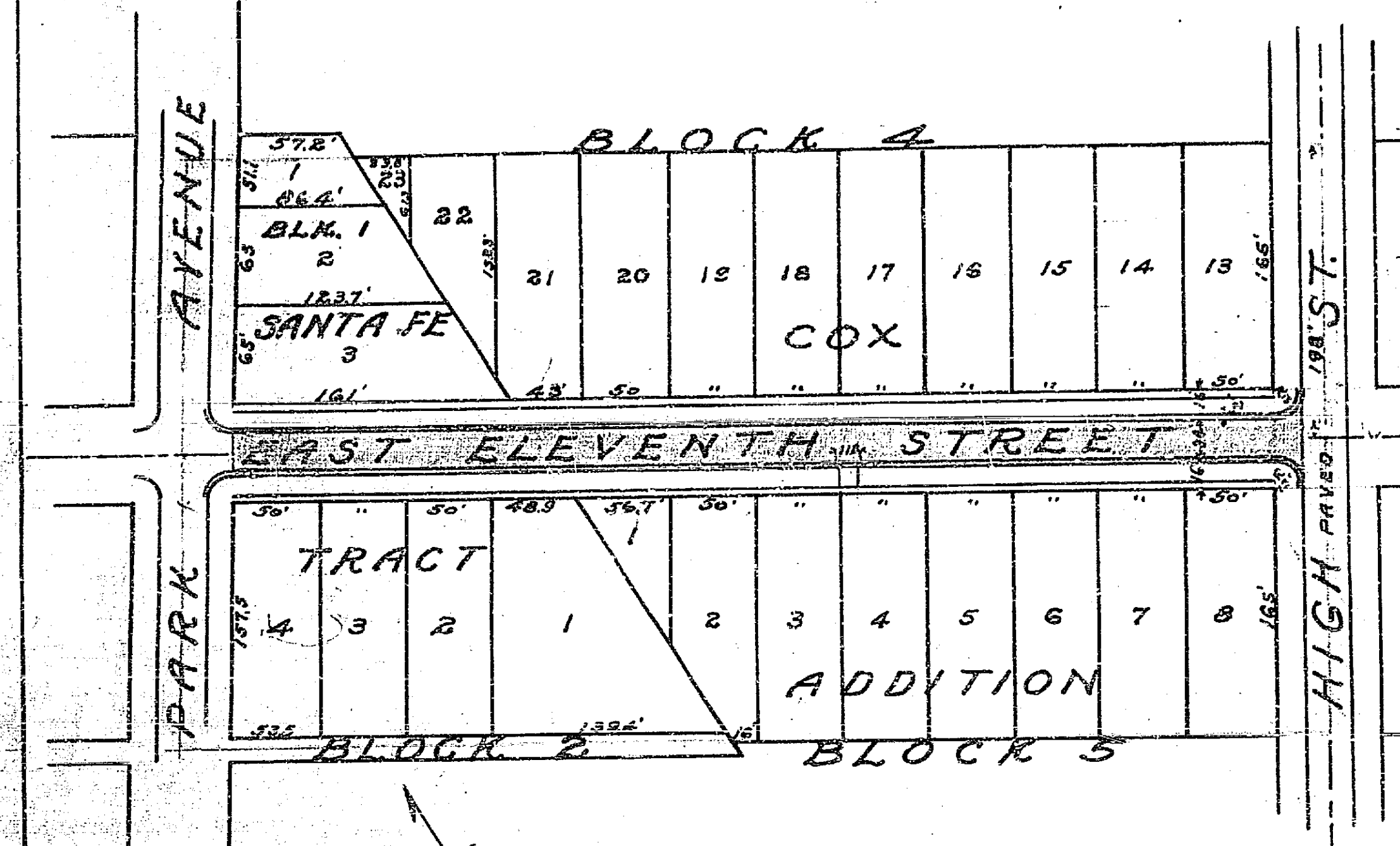


MAP SHOWING PROPOSED IMPROVEMENT ON EAST ELEVENTH STREET

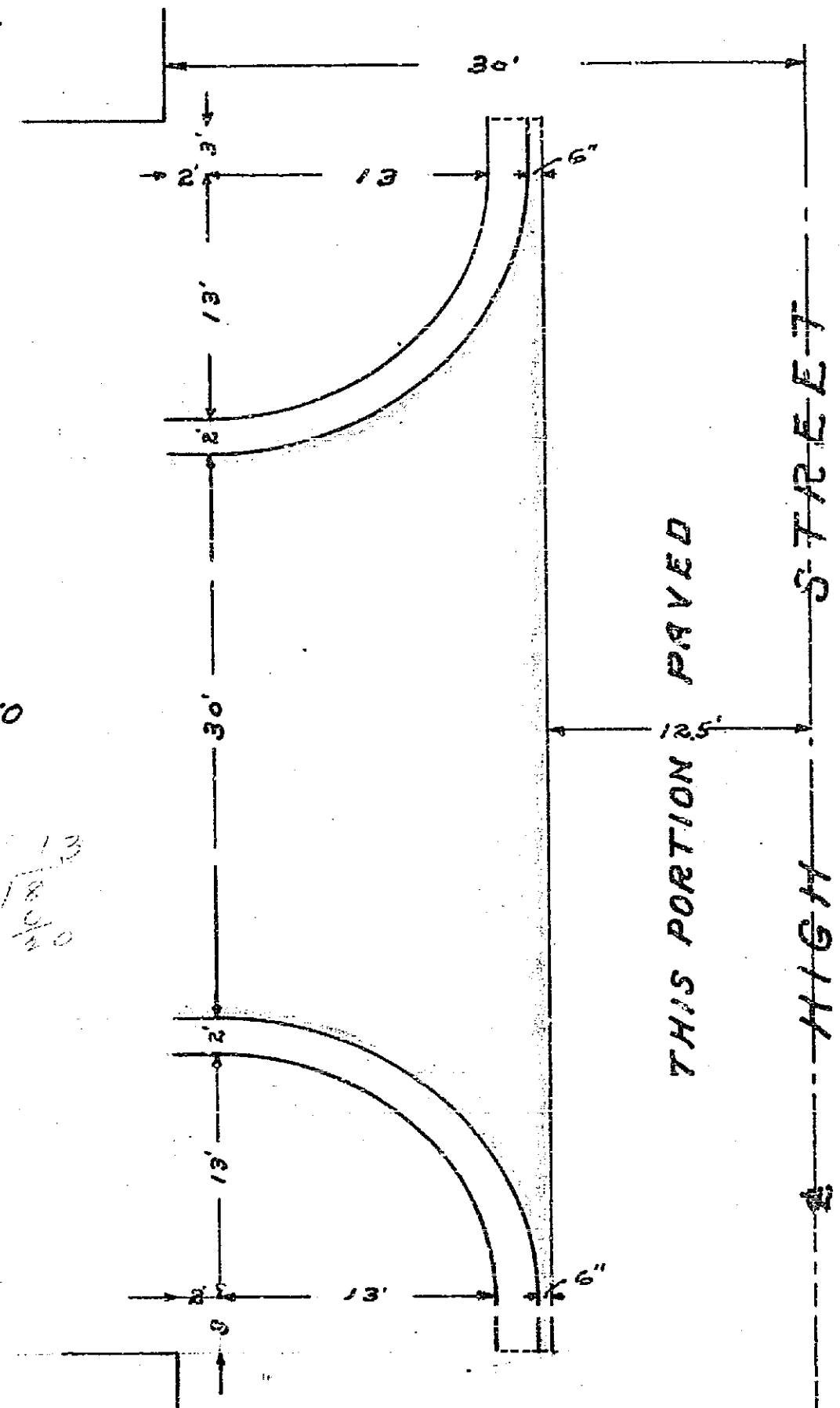
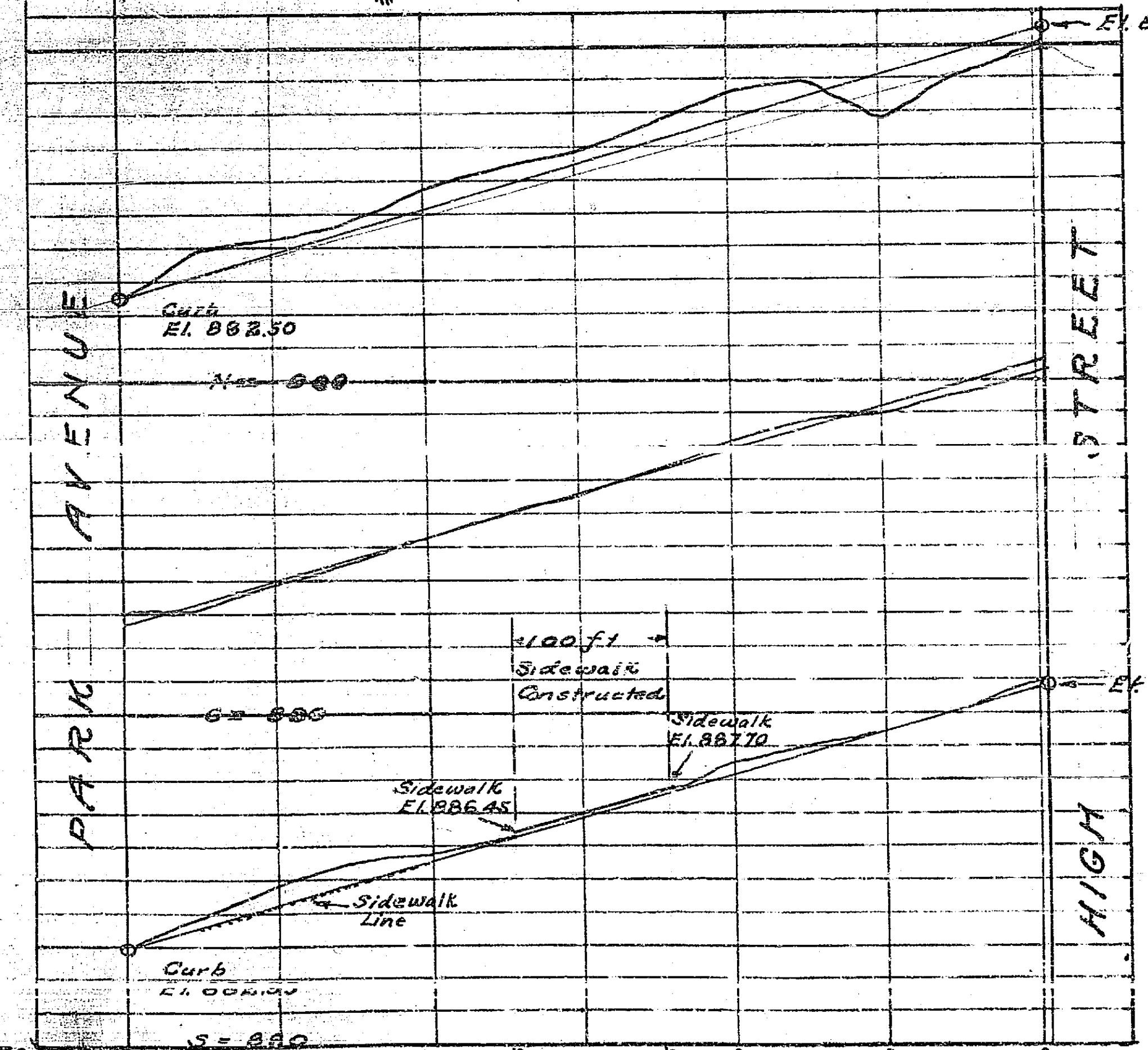
A.P. CAMPBELL, CITY ENGINEER 1926.

Approved by the Mayor and Common Council of the City of Riverside this 14TH day of MAY 1926.

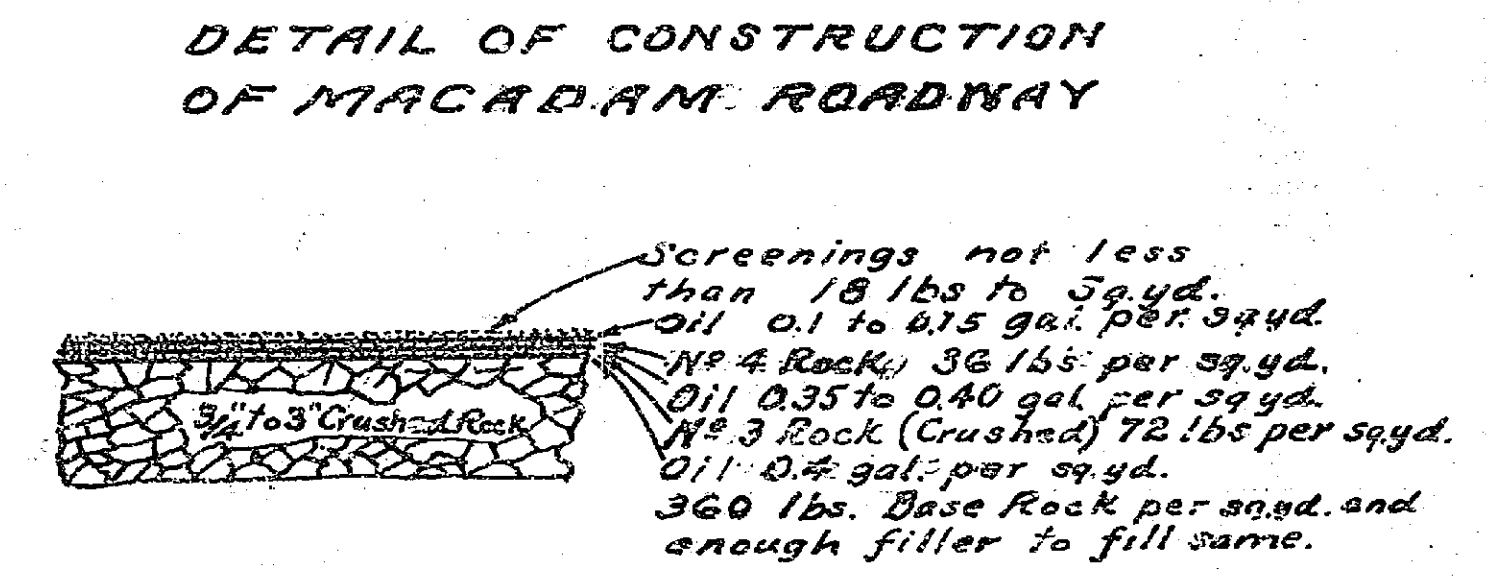
Attest: *J. Oscar Miller*
City Clerk.



SCALE:
1 IN. = 100 FT.



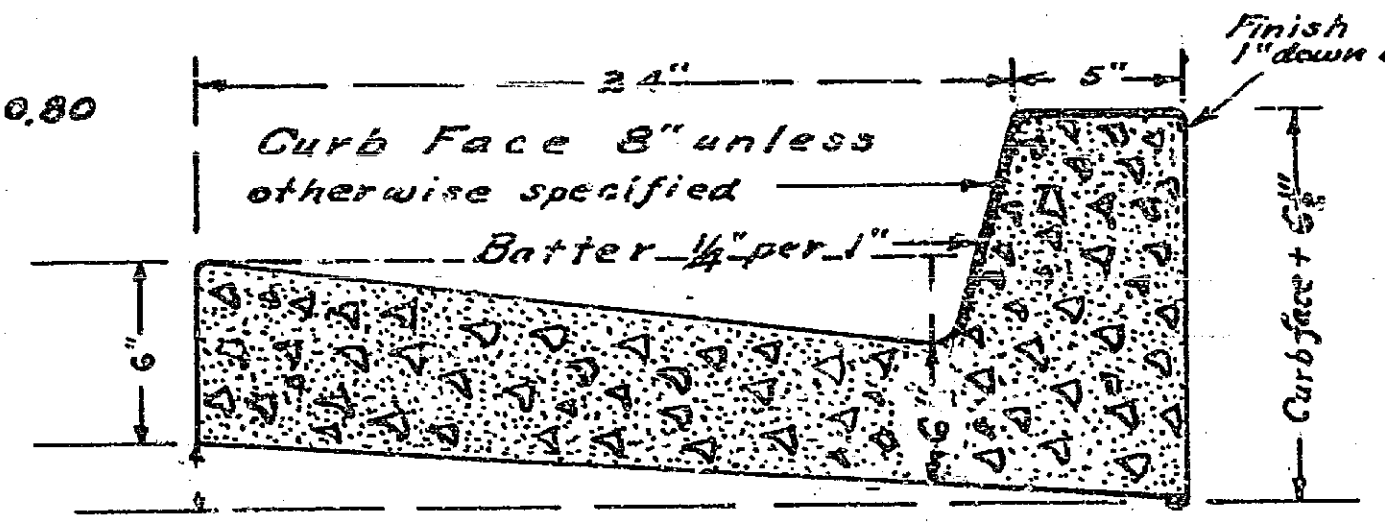
DETAIL OF INTERSECTION AT HIGH STREET.



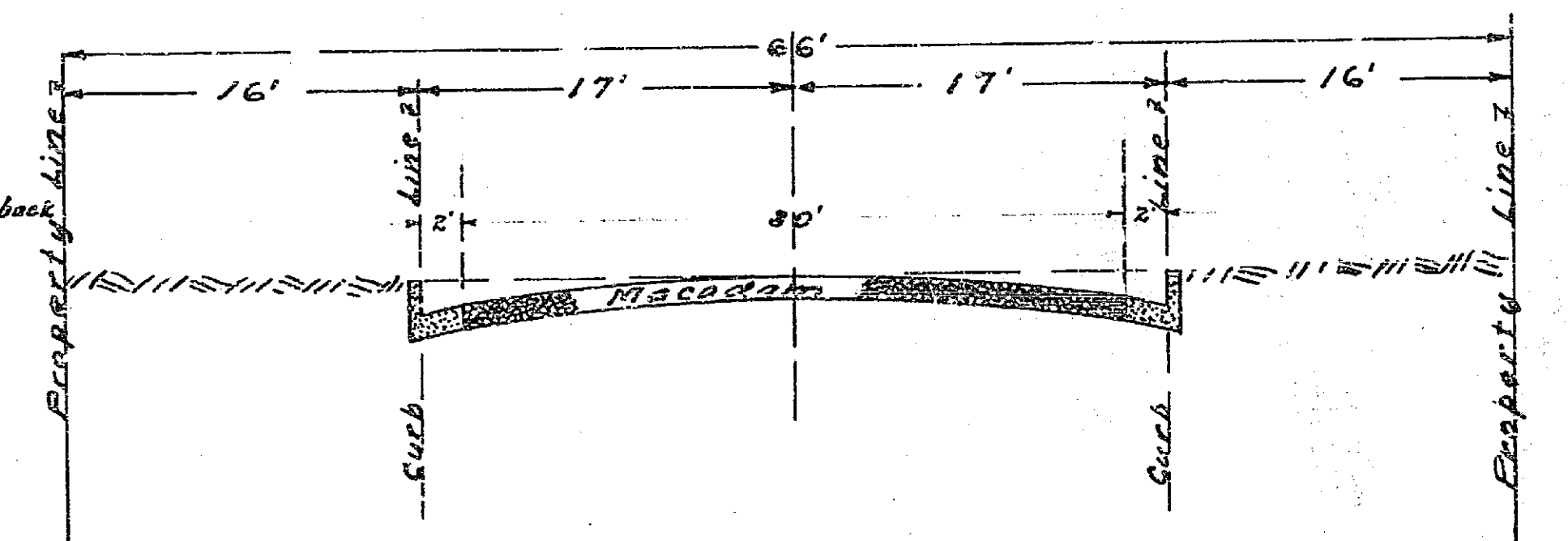
DETAIL OF CONSTRUCTION OF MACADAM ROADWAY

LEGEND
Macadam Roadway to be constructed shown thus:

Combination Curb and Gutter " " " "



SECTION OF COMBINATION CURB & GUTTER CONCRETE MIX 1:2:4



TYPICAL CROSS-SECTION SHOWING IMPROVEMENT

256-B

See Profile No. 612