

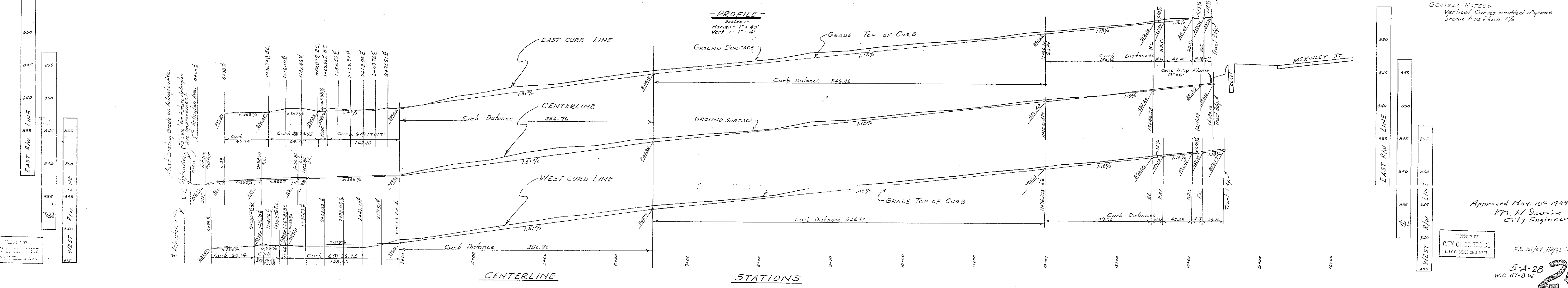
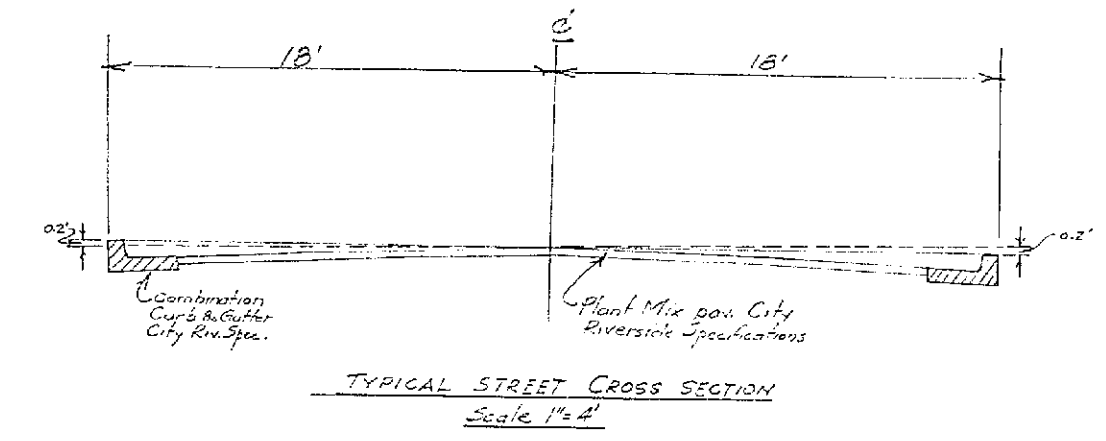
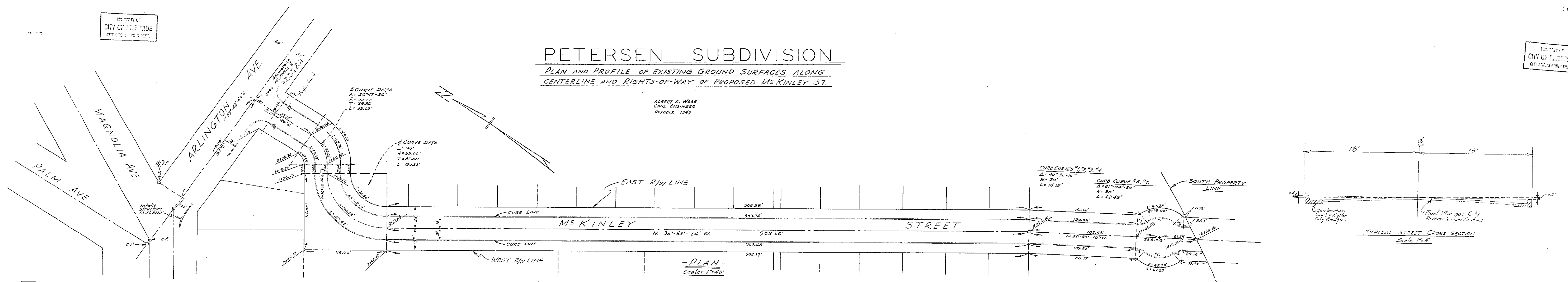
11/20/49  
M. H. SWANN  
CITY ENGINEER

PROPERTY OF  
CITY OF MEMPHIS  
ENGINEER'S OFFICE

# PETERSEN SUBDIVISION

## PLAN AND PROFILE OF EXISTING GROUND SURFACES ALONG CENTERLINE AND RIGHTS-OF-WAY OF PROPOSED MCKINLEY ST.

ALBERT A. WEBB  
CIVIL ENGINEER  
OCTOBER 1949



GENERAL NOTES:  
Vertical Curves omitted if grade  
break less than 1%.

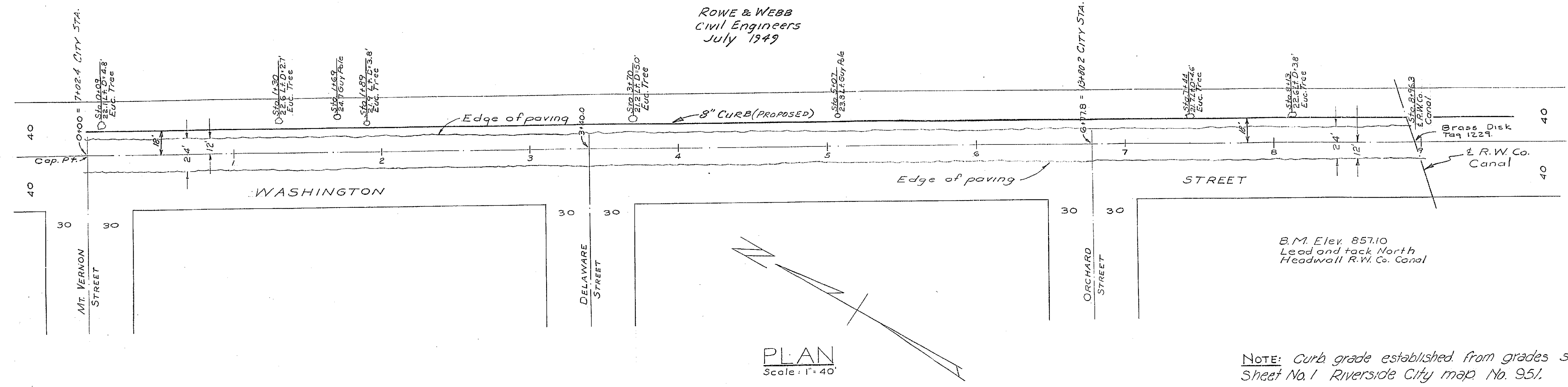
Approved Nov. 10<sup>th</sup> 1949  
M. H. Swann  
C. E. Engineer.

PROPERTY OF  
CITY OF MEMPHIS  
ENGINEER'S OFFICE

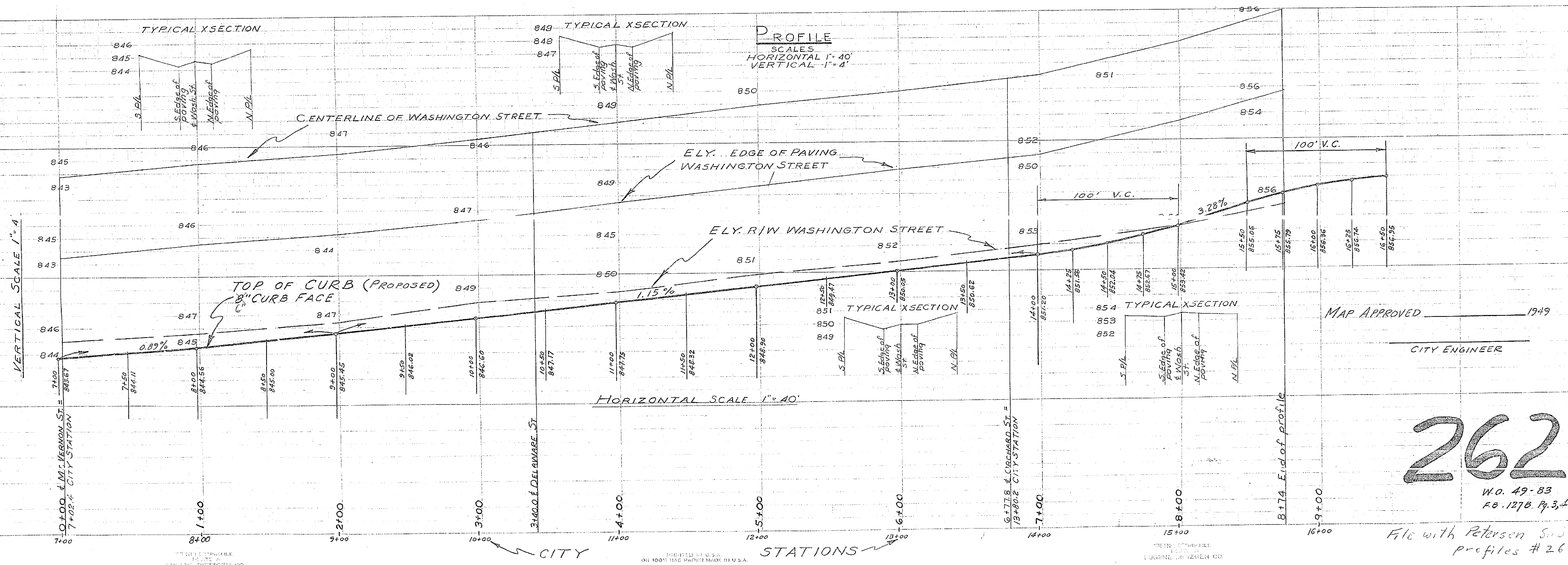
5-A-28  
WD 47-3W  
**262**

# PLAN AND PROFILE OF WASHINGTON ST. FROM MT. VERNON ST. TO RIVERSIDE WATER COMPANY CANAL

ROWE & WEBB  
Civil Engineers  
July 1949



NOTE: Curb grade established from grades shown on Sheet No. 1 Riverside City map No. 951.



PRINTED AT THE  
BUREAU OF ENGINEERING  
DESIGN  
EUGENE W. DITZLER CO.

MADE IN U.S.A.  
OIL INK ON 100% RECYCLED PAPER MADE IN U.S.A.

PRINTED AT THE  
BUREAU OF ENGINEERING  
DESIGN  
EUGENE W. DITZLER CO.