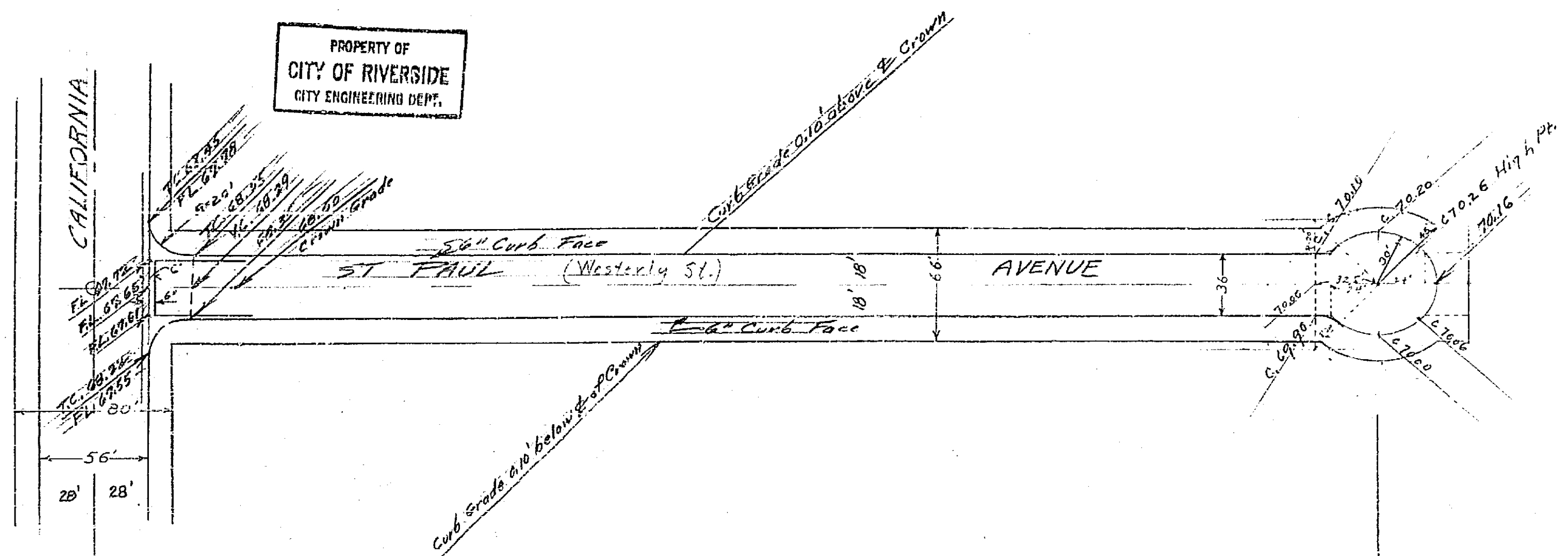




PLAN SURVEYED BY DATE  
 PLOTTED BY  
 CHECKED BY  
 NOTE BOOK NO. OF WAY CHECKED  
 NO.

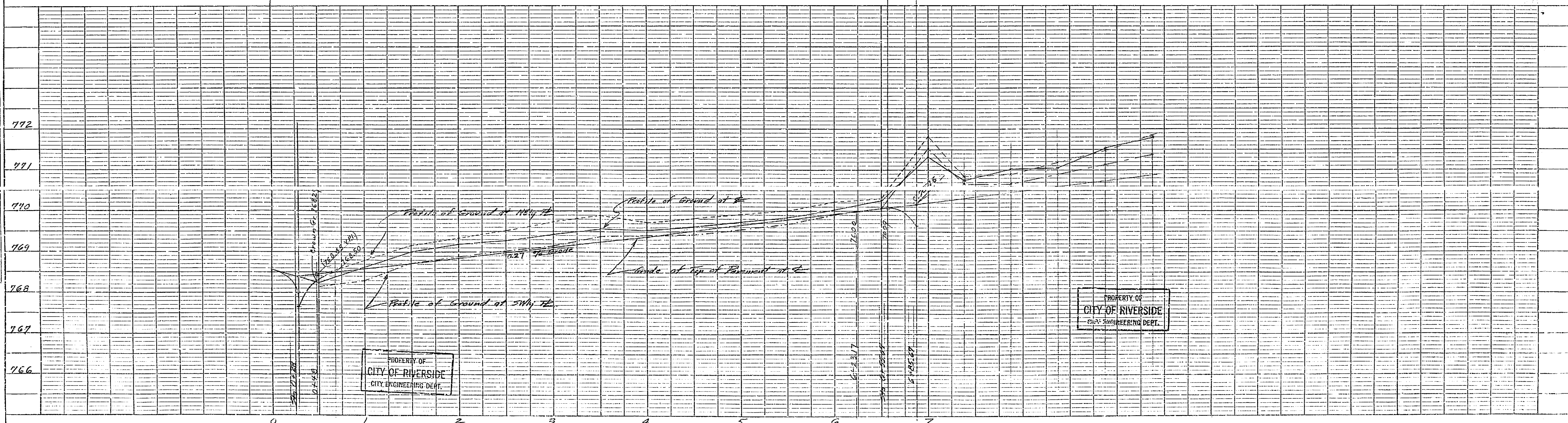


PROPERTY OF  
 CITY OF RIVERSIDE  
 CITY ENGINEERING DEPT.

Approved: M. H. Irvine.  
 CITY ENGINEER.

RIVERSIDE ENGINEERING CO.  
 RIVERSIDE, CALIFORNIA  
 FOR RAY SUBDIVISION  
 STREET PROFILE  
 DRAWN BY            CHECKED BY            SCALE 1"=50'  
 DATE JUNE 1951 REVISED             
           CIVIL & STRUCTURAL ENGINEER #1126  
 SHEET 2 OF 3

PROFILE SURVEYED BY DATE  
 PLOTTED BY  
 CHECKED BY  
 NOTE BOOK NO. OF WAY CHECKED  
 NO.



PROPERTY OF  
 CITY OF RIVERSIDE  
 CITY ENGINEERING DEPT.

264

