

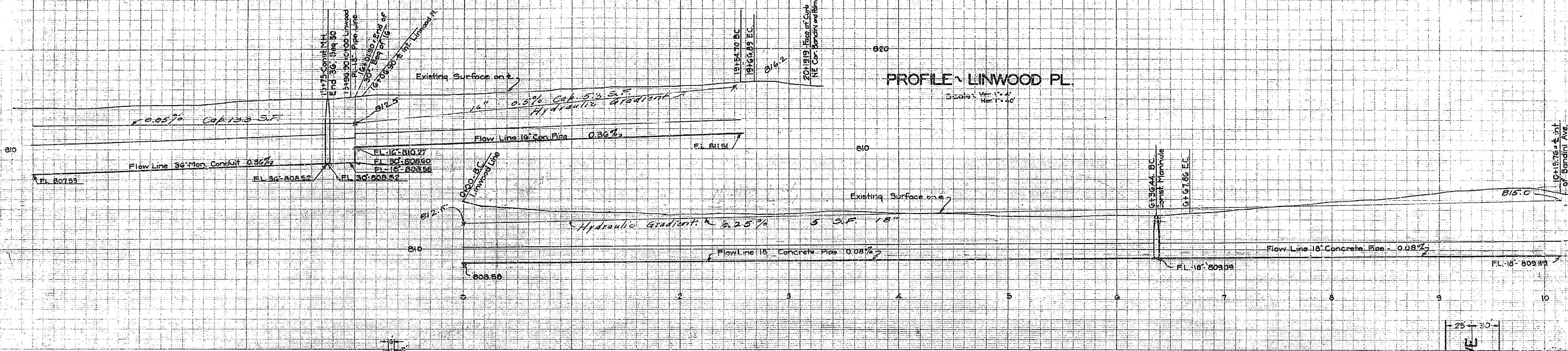
Palm Ave Storm Drain			
Drawing Number	Sheet Number	Total Sheets	Field-Book
	1	2	375 379
Drawn By	Checked By	Approved By	
Arthur K. Ridley	Aug-12-1942		

PROFILE - PALM AVE

Scale: 1" = 20'

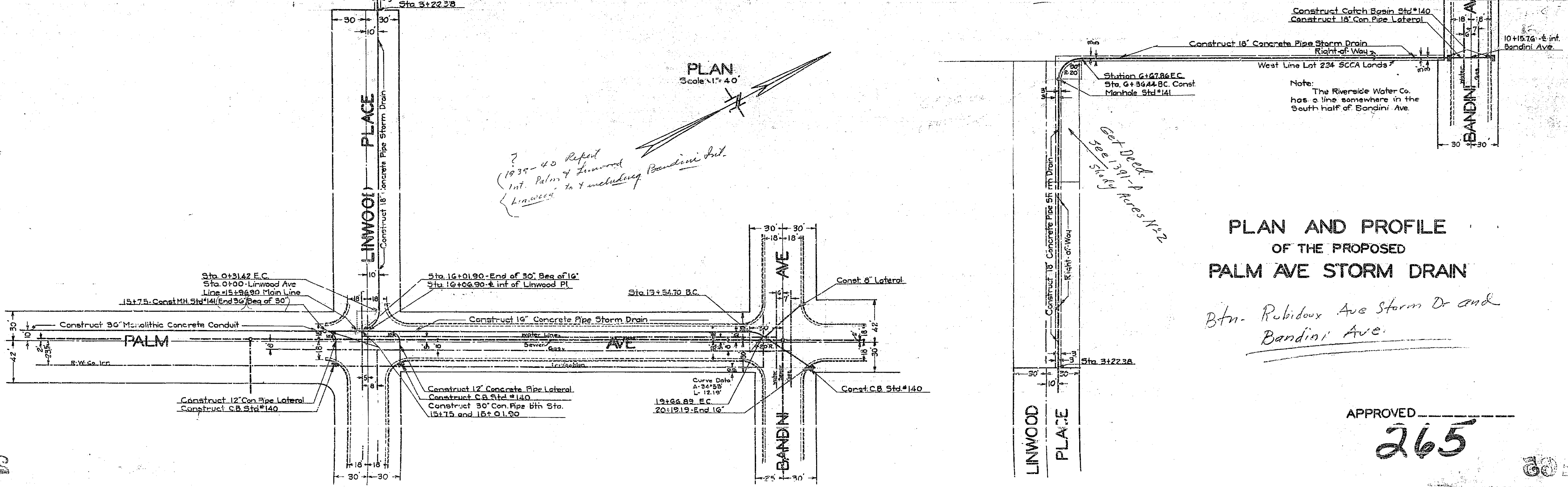
PROFILE - LINWOOD PL

Scale: 1" = 40'



PLAN

Scale: 1" = 40'



PLAN AND PROFILE OF THE PROPOSED PALM AVE STORM DRAIN

Btn. Rubidoux Ave Storm D. and Bandini Ave.

APPROVED
265

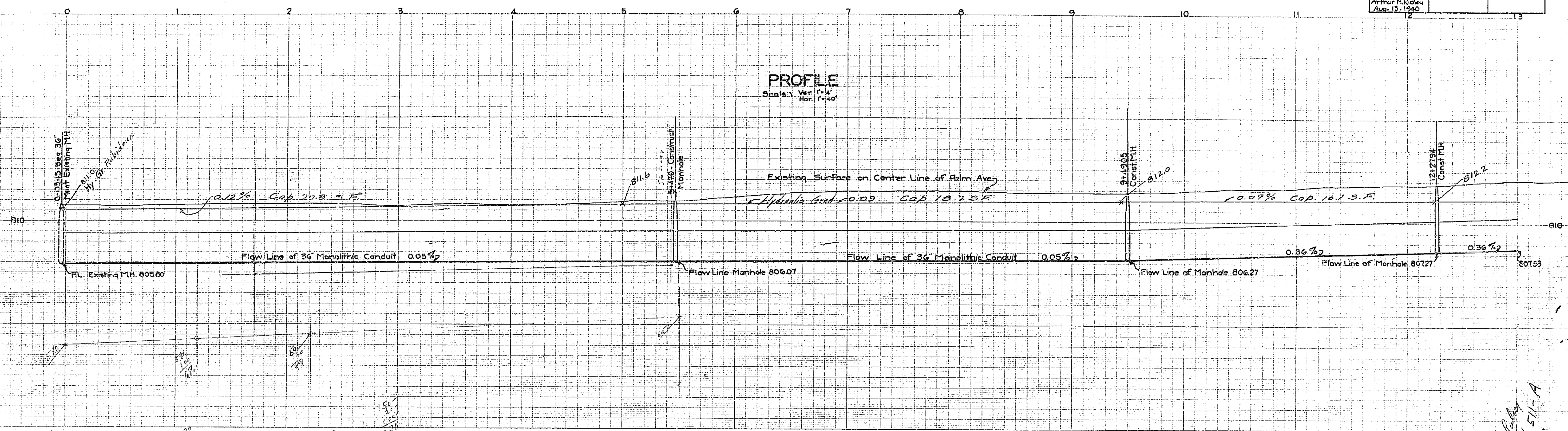
*?
1934-40 Replot
Int. Palm & Linwood
Linwood to & including Bandini Int.*

*Get Deed
See 1391-A
Shady Acres N-22*

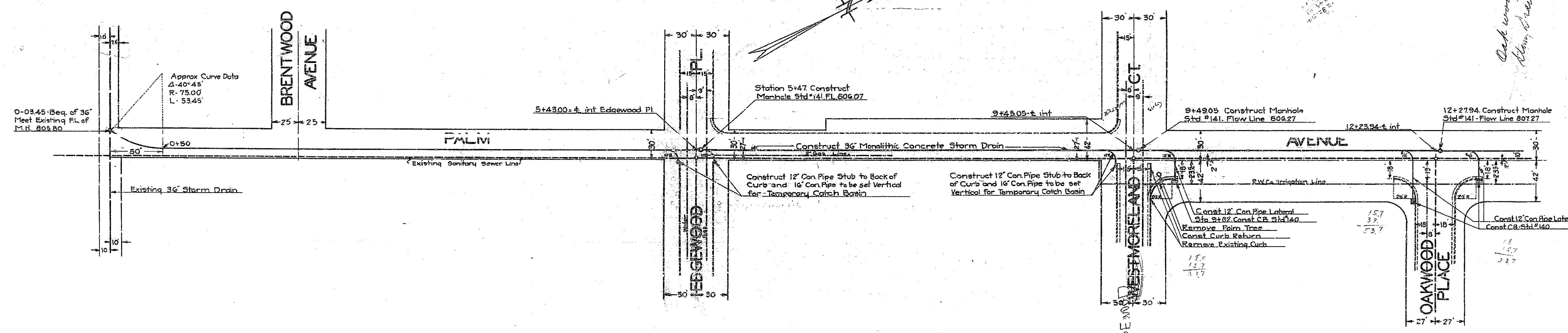
Note: The Riverside Water Co. has a line somewhere in the South half of Bandini Ave.

Palm Avenue Storm Drain			
Drawing Number	Sheet Number	Total Sheets	Plot Book
	2	2	379, 379
Drawn by Arthur H. Radwin Aug. 13, 1940		Checked by Approved by	

PROFILE
Scale: Ver. 1"=4'
Hor. 1"=40'



PLAN
Scale: 1"=40'



*Oak wood W of Palm
along Hedgewood Way # 511-A*

265