

ASSESSMENT NO. 401
DIAGRAM

EXHIBITING: STEARNS STREET SANITARY SEWER DISTRICT

IN THE CITY OF RIVERSIDE ON WHICH WORK HAS BEEN DONE UNDER THE OFFICIAL CONTRACT OF THE SUPERINTENDENT OF STREETS OF SAID CITY WITH

DATED FEB. 2, 1955

C. O. BRAND

FOR THE CONSTRUCTION OF SANITARY SEWERS AND APPURTENANCES

IN STEARNS STREET AND CERTAIN RIGHTS OF WAY

AS IS MORE PARTICULARLY DESCRIBED IN SAID CONTRACT TO WHICH REFERENCE IS HEREBY MADE FOR FURTHER PARTICULARS, SAID DIAGRAM ALSO SHOWS THE RELATIVE LOCATION OF EACH LOT PORTION OF LOT, PIECE OR PARCEL OF LAND ASSESSED FOR THE WORK DONE, NUMBERED IN CIRCLES TO CORRESPOND TO THE

RED INK NUMBERS IN THE ASSESSMENT

HEREIN FIGURES NEXT TO PROPERTY LINES SHOW LENGTH OF SAID LINES IN FEET.

THE MARK (') MEANS FEET. PROPERTY LINES THAT DIFFER FROM THE RECORDED

SUBDIVISIONS ARE SHOWN BY BROKEN LINES. THE DISTRICT BENEFITED IS

BOUNDED BY A HEAVY DASHED LINE

PROPERTY COVERED BY THIS ASSESSMENT IS SHOWN ON THE FOLLOWING

RECORDED MAPS.

MOUNTAIN VIEW FARMS

M.B. 14-24

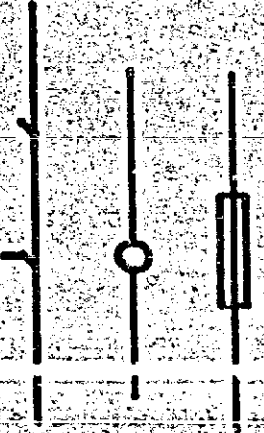
REC. RIV. CO.

HEREIN THE LEGEND OF THE DIFFERENT KINDS OF WORK PERFORMED IS SHOWN AS FOLLOWS.

HSE. CONN. & WYES

MANHOLES

SLEEVE



CITY ENGINEER OF THE CITY OF RIVERSIDE THE FOLLOWING IS A STATEMENT OF AMOUNTS OF DIFFERENT KINDS OF WORK DONE BY C. O. BRAND

CONTRACT DATED FEB. 2, 1955 PURSUANT TO RESOLUTION OF INTENTION NO. 6447 ADOPTED BY THE CITY COUNCIL OF THE CITY OF RIVERSIDE ON THE 23rd DAY OF NOV. 1954

2924 FT.	8" V.C. PIPE
540 "	" " " HSE. CONN.
44 "	24" C.M. PIPE SLEEVE
12	MANHOLES
57	8x4" V.C. WYE BRANCHES

AT SAID CITY OF RIVERSIDE: THIS 23rd DAY OF MAY, 1955

CITY ENGINEER
OF THE CITY OF RIVERSIDE

I HEREBY CERTIFY THAT THE ABOVE WORK WAS DONE IN ACCORDANCE WITH LINES AND GRADES FURNISHED BY ME AND THAT THE DIAGRAM OF THE ASSESSMENT DISTRICT FOR THE SAME IS CORRECT.

CITY ENGINEER
OF THE CITY OF RIVERSIDE

RECORDED AT 11:05 O'CLOCK A.M.
THIS 13th DAY OF JULY 1955

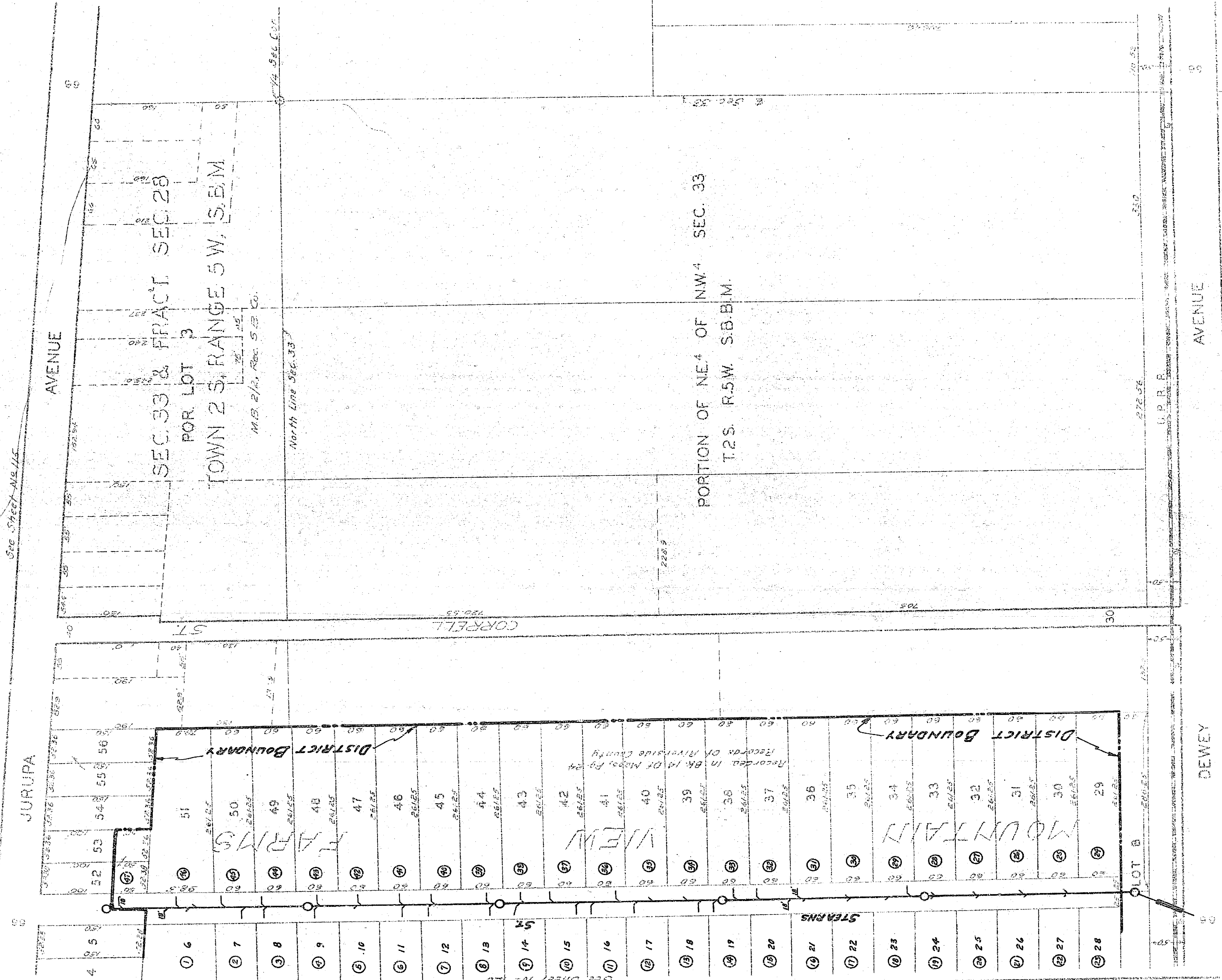
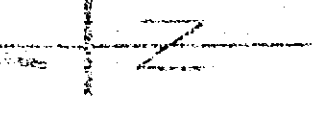
SUPERINTENDENT OF STREETS
OF THE CITY OF RIVERSIDE

276

276

276

Scale = 1" = 100'



276

MISSING