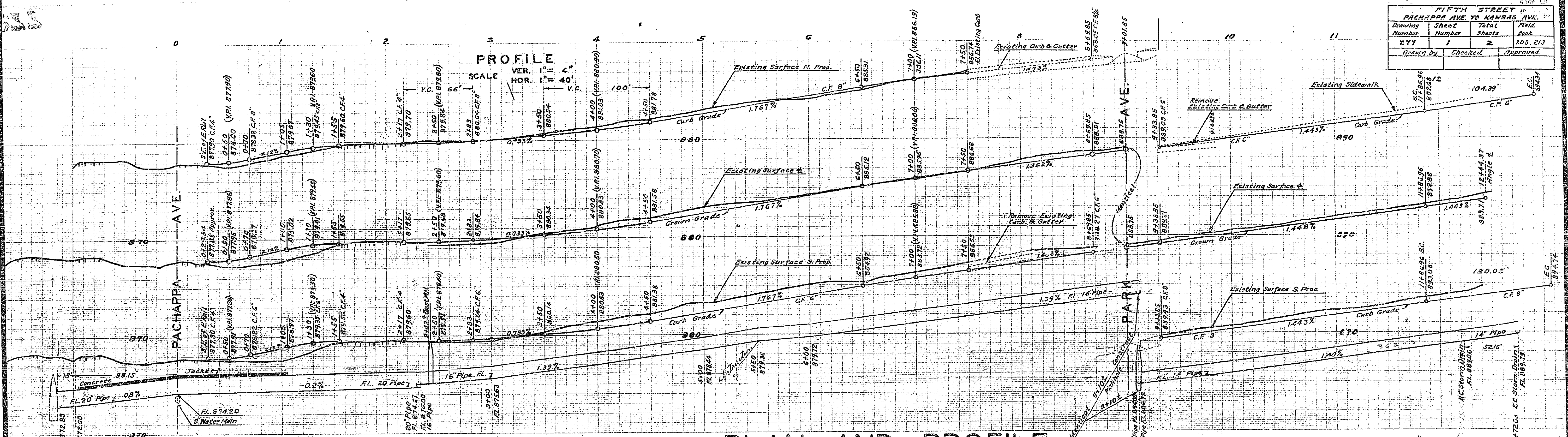


FIFTH STREET PACHAPPA AVE TO KANSAS AVE.			
Drawing Number	Sheet	Total Sheets	Book
277	1	2	208, 213
Drawn by	Checked	Approved	

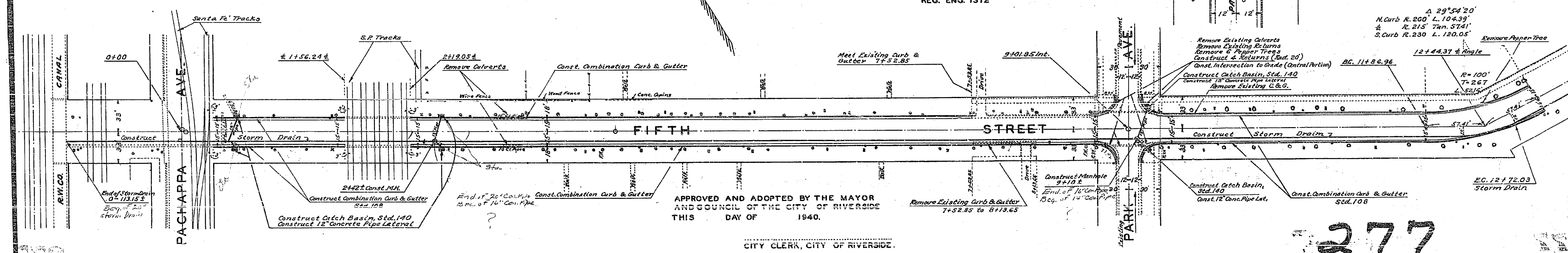
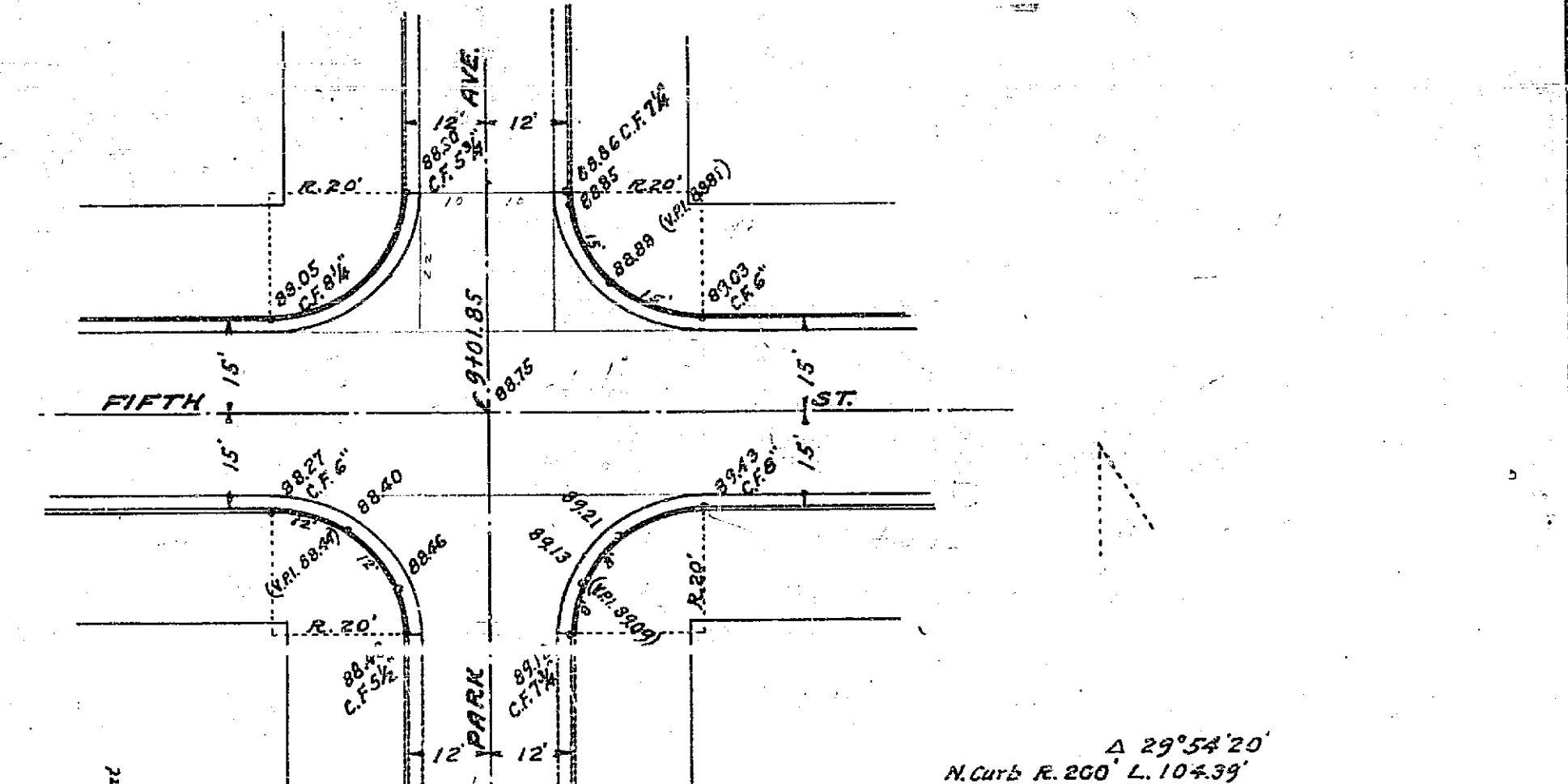


## PLAN AND PROFILE OF THE PROPOSED IMPROVEMENT ON FIFTH STREET PACHAPPA AVE. TO KANSAS AVE.

ENGINEER DEPT. RIVERSIDE CALIF. 1940.  
CITY (U.S.C.S.) DATUM PLANE  
FIELD BOOK 208 PAGES 8-35  
" " 213 " 1-44

SCALE HOR. 1" = 40'  
VER. 1" = 4'

APPROVED \_\_\_\_\_  
CITY ENGINEER.  
REG. ENG. 1312



APPROVED AND ADOPTED BY THE MAYOR  
AND COUNCIL OF THE CITY OF RIVERSIDE  
THIS DAY OF 1940.

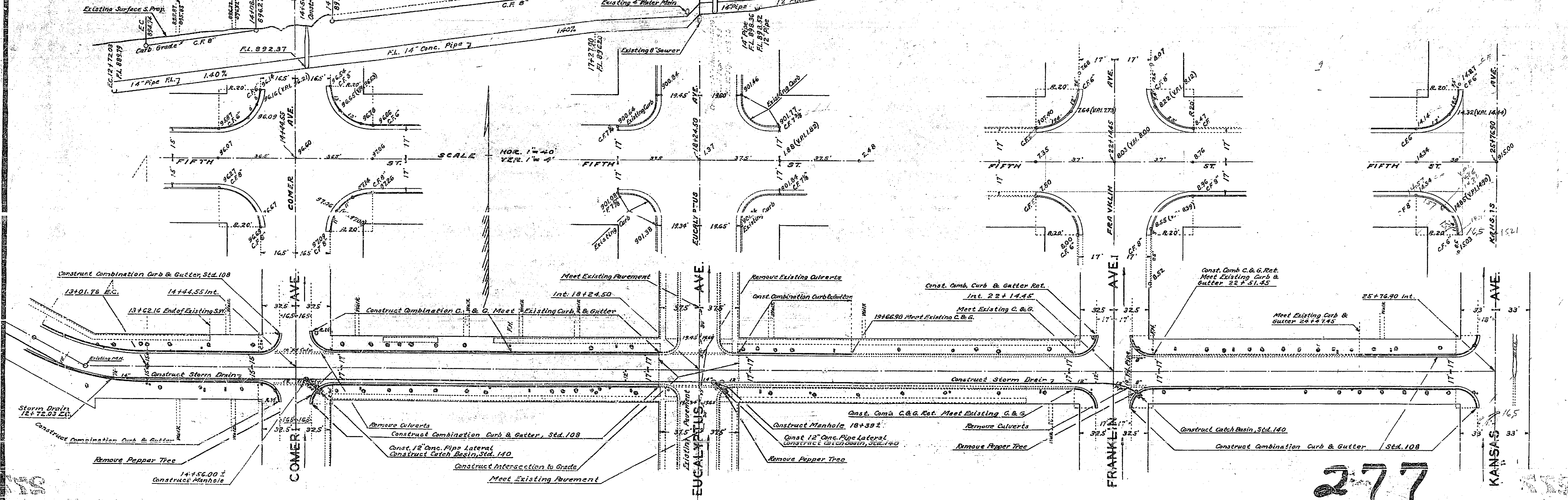
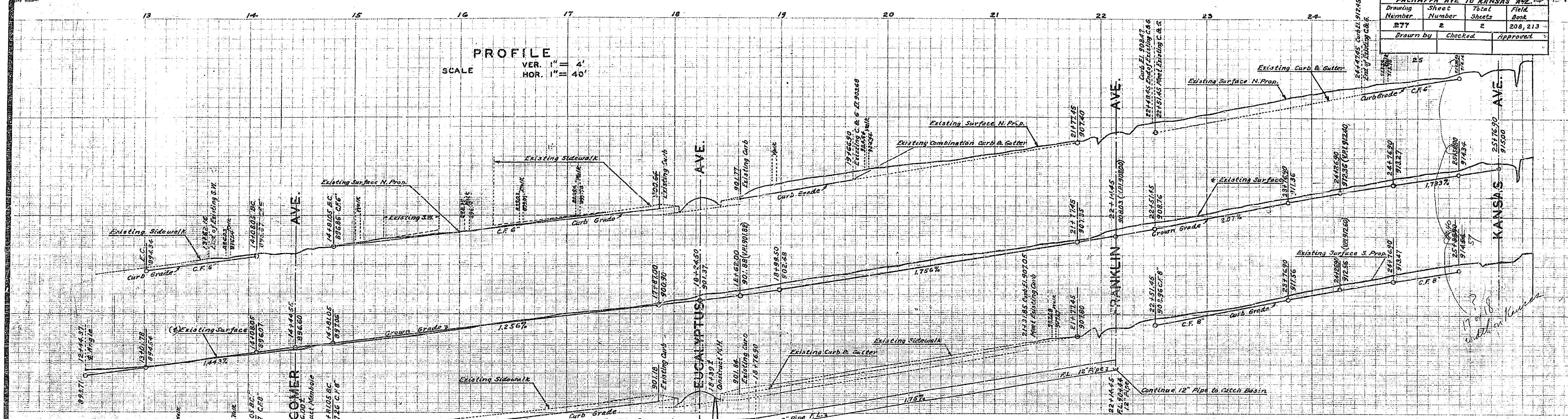
CITY CLERK, CITY OF RIVERSIDE.

277



FIFTH STREET PACHAPPA AVE TO KANSAS AVE			
Drawing Number	Sheet Number	Total Sheets	Field Book
277	2	208, 213	
Drawn by	Checked	Approved	

PROFILE  
 SCALE VER. 1" = 4'  
 HOR. 1" = 40'



277