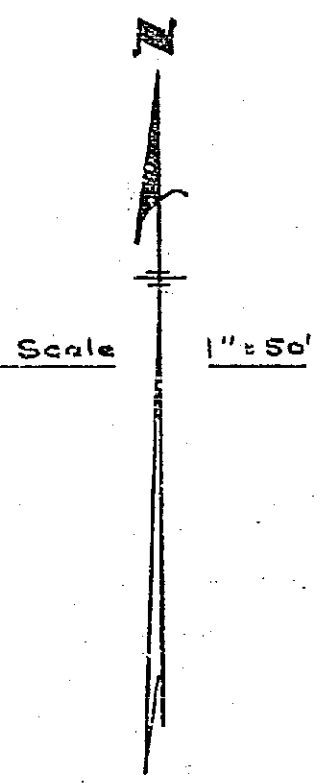
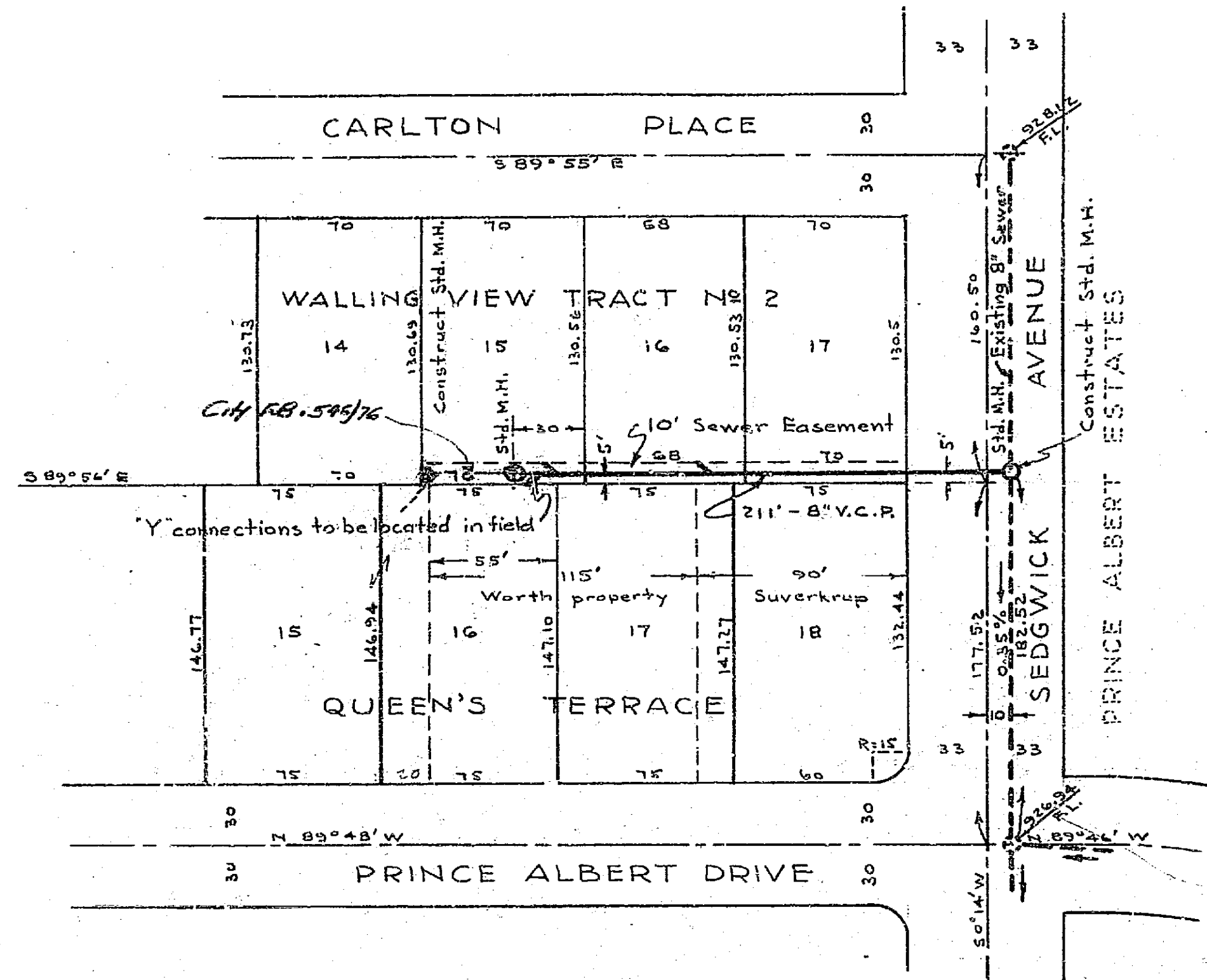


PROPERTY OF
CITY OF RIVERSIDE
CITY ENGINEERING DEPT.

PROPERTY OF
CITY OF RIVERSIDE
CITY ENGINEERING DEPT.

No 300-A
SEWER PLAN AND PROFILE
ON AN EASEMENT
WESTERLY FROM SEDGWICK AVENUE
BETWEEN
PRINCE ALBERT DRIVE AND CARLTON PLACE
CITY OF RIVERSIDE - CALIFORNIA

BY
ALBERT A. WEBB ASSOCIATES
CIVIL ENGINEERS JUNE 1953

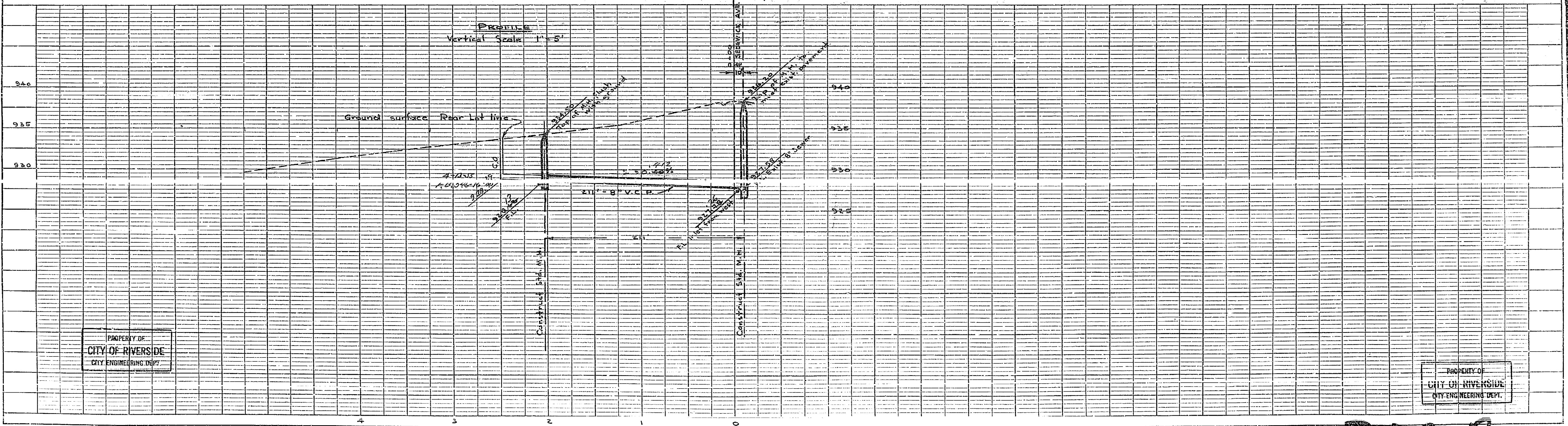


Bench Mark - Top of I.P. & Prince Albert Drive
and Sedgwick Avenue - Elev. 938.76

Approved this 27th day of June 1953
M. H. Swine
City Engineer - City of Riverside

PLAN
SURVEYED BY DATE
CHECKED BY DATE
NOTE BOOK NO. 113

PROFILE
SURVEYED BY DATE
CHECKED BY DATE
NOTE BOOK NO. 113



PROPERTY OF
CITY OF RIVERSIDE
CITY ENGINEERING DEPT.

PROPERTY OF
CITY OF RIVERSIDE
CITY ENGINEERING DEPT.

300 A