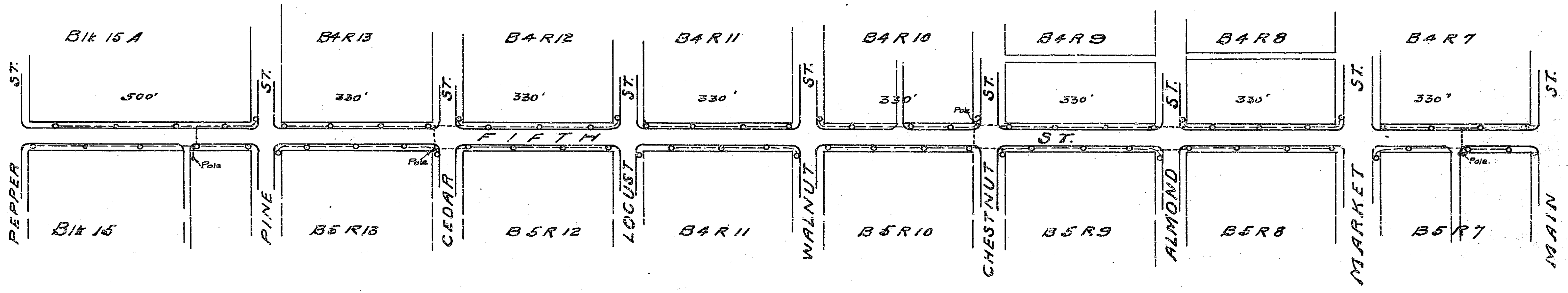
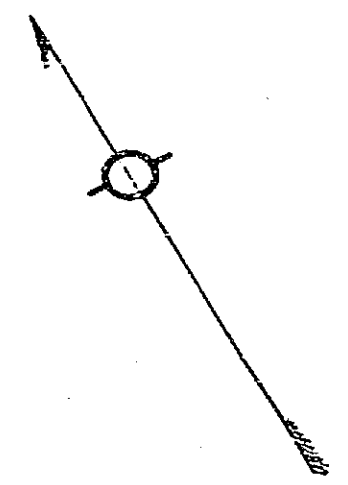


302

302

Exhibit (B)  
**MAP** SHOWING PROPOSED LOCATION OF CONCRETE LIGHT POSTS.  
 CONDUIT SYSTEM & CONNECTING FEED LINES ON 5<sup>TH</sup> ST. FROM MAIN ST. TO PEPPER ST.  
 IN THE MANNER CONTEMPLATED BY RESOLUTION No. 208 (New Series)  
 Scale 1" = 200' FT  
 A. P. Campbell  
 City Engineer  
 RIVERSIDE, CALIFORNIA.  
 OCTOBER 1911.



303

305

LS 10647

304