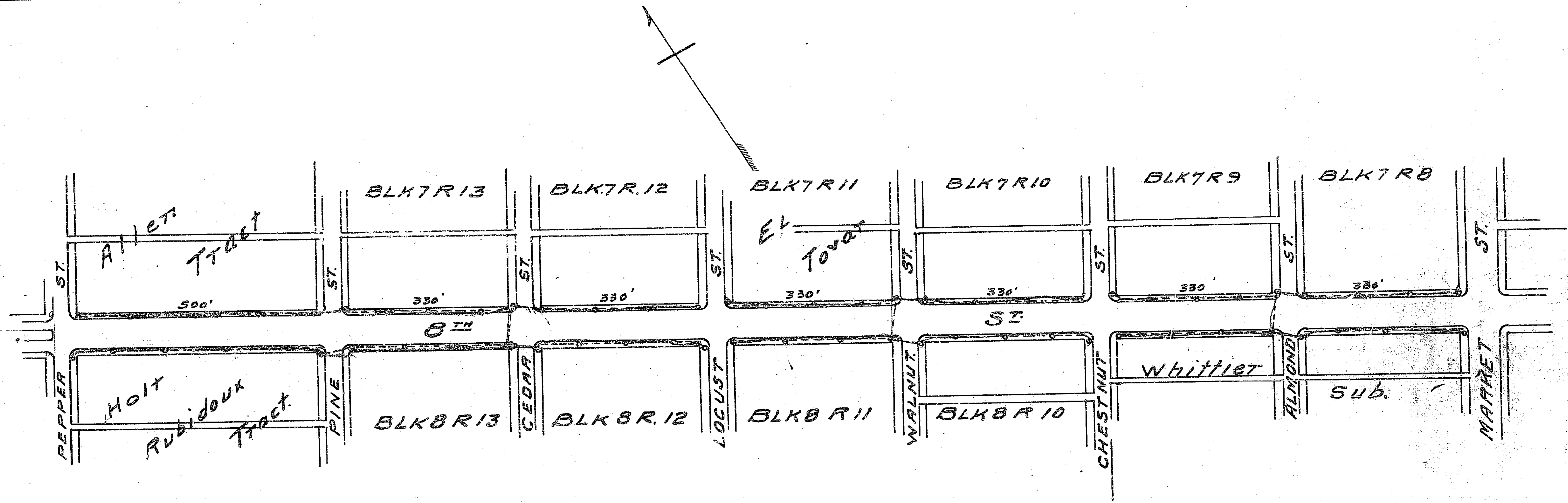


305-D

305-D



LS. 1015 A.

CITY OF RIVERSIDE
MAP
 Showing proposed location of concrete one-light
 Posts, Conduit system & connecting feed lines on
8th ST. Between Market & Pepper ST.
 Scale, 1" = 200 FT. A.P. Campbell
City Engineer.
 Approved by the Board
 of Public Utilities - July 22-1912
 Clerk

306

307 D

308