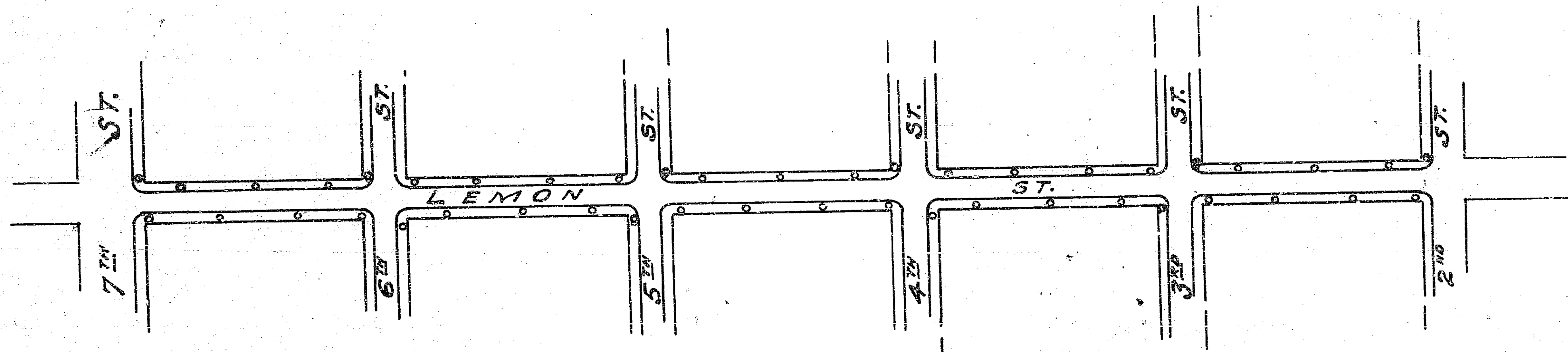


MAP SHOWING PROPOSED LOCATION OF CONCRETE LIGHT POSTS
CONDUIT SYSTEM & CONNECTING FEED LINES ON LEMON ST. FROM 2ND ST. 7TH ST.
IN THE MANNER CONTEMPLATED BY RESOLUTION No. 228 (New Series)
Scale 1" = 200 FT

A. P. Cambbell
City Engineer
RIVERSIDE CALIFORNIA
JANUARY 1912



3076