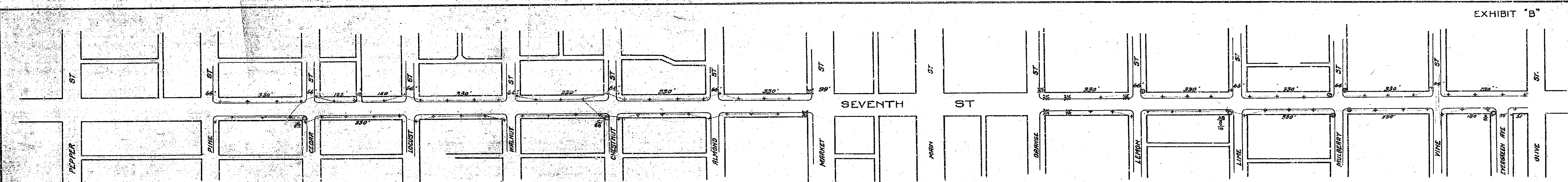


18

308

1/10/28

EXHIBIT "B"



Note

- Three Light Concrete Light Posts to be installed are shown thus: +
- Single Light Concrete Light Posts to be removed and Three Light posts to be installed in their places are shown thus: ⊕
- Three Light posts already installed are shown thus: ⊗
- Conduit to be installed is shown thus: —
- Pole where service box is to be installed is shown thus: ○



MAP SHOWING PROPOSED SYSTEM OF LIGHTING SEVENTH ST WITH THREE LIGHT CONCRETE LIGHT POSTS, CONDUITS, CONNECTING FEED LINES, ETC.
 A.P. CAMPBELL, CITY ENGR., RIVERSIDE CALIF.

308