

ASSESSMENT NO. 364

DIAGRAM

EXHIBITING MCKENZIE STREET IMPROVEMENT DISTRICT

IN THE CITY OF RIVERSIDE ON WHICH WORK HAS BEEN DONE UNDER MY OFFICIAL CONTRACT AS SUPERINTENDENT OF STREETS OF SAID CITY WITH C. O. BRAND DATED MAY 29, 1952





FOR THE CONSTRUCTION OF COMBINATION CURBS AND GUTTERS AND GUTTERS ONLY AND APURTENANT WORK AS IS MORE PARTICULARLY DESCRIBED IN SAID CONTRACT TO WHICH REFERENCE IS HEREBY MADE FOR FURTHER PARTICULARS. SAID DIAGRAM ALSO SHOWS THE RELATIVE LOCATION OF EACH LOT, PORTION OF LOT, PIECE OR PARCEL OF LAND ASSESSED FOR THE WORK DONE NUMBERED IN CIRCLES TO CORRESPOND TO THE RED INK NUMBERS IN THE ASSESSMENT HEREIN FIGURES NEXT TO PROPERTY LINES SHOW LENGTH OF SAID LINES IN FEET. THE MARK (X) MEANS FEET. PROPERTY LINES THAT DIFFER FROM THE RECORDED SUBDIVISIONS ARE SHOWN BY BROKEN LINES. THE DISTRICT BENEFITED IS BOUND BY A HEAVY DASHED LINE. PROPERTY COVERED BY THIS ASSESSMENT IS SHOWN ON THE FOLLOWING RECORDED MAPS:

DAVIDSON RESUBDIVISION M.B. & P. 56 RECORDS OF RIVERSIDE COUNTY
MAGNOLIA TRACT M.B. & P. 136 RECORDS OF RIVERSIDE COUNTY

I HEREBY CERTIFY THAT THIS ASSESSMENT DIAGRAM WAS APPROVED BY THE CITY COUNCIL OF THE CITY OF RIVERSIDE AT A MEETING THEREOF HELD ON THE _____ DAY OF _____ 1952

CITY CLERK OF THE CITY OF RIVERSIDE.

HEREIN THE LEGEND OF THE DIFFERENT KINDS OF WORK PERFORMED IS SHOWN AS FOLLOWS:

- STD. COMBINATION CURB AND GUTTERS 
- STD. GUTTER ONLY 
- 6 IN. CONCRETE PIPE REMOVED 
- CONCRETE DRIVEWAY APRONS RECONSTRUCTED 

SUPERINTENDENT OF STREETS OF THE CITY OF RIVERSIDE THE FOLLOWING IS A STATEMENT OF AMOUNTS OF DIFFERENT KINDS OF WORK DONE BY C. O. BRAND UNDER

CONTRACT DATED MAY 29, 1952 PURSUANT TO RESOLUTION OF INTENTION NO. 5261 ADOPTED BY THE CITY COUNCIL OF THE CITY OF RIVERSIDE ON THE 11TH DAY OF MARCH 1952

STD. COMBINATION CURB AND GUTTER	2471 LIN. FT.
STD. GUTTER ONLY	179.6 SQ. FT.
6 IN. CONCRETE PIPE REMOVED	24.7 LIN. FT.
CONC. DRIVEWAY APRONS RECONSTRUCTED	271.9 SQ. FT.

AT SAID CITY OF RIVERSIDE THIS _____ DAY OF _____

SUPERINTENDENT OF STREETS OF THE CITY OF RIVERSIDE

I HEREBY CERTIFY THAT THE ABOVE WORK WAS DONE IN ACCORDANCE WITH LINES AND GRADES FURNISHED BY ME AND THAT THE DIAGRAM OF THE ASSESSMENT DISTRICT FOR THE SAME IS CORRECT.

CITY ENGINEER OF THE CITY OF RIVERSIDE.

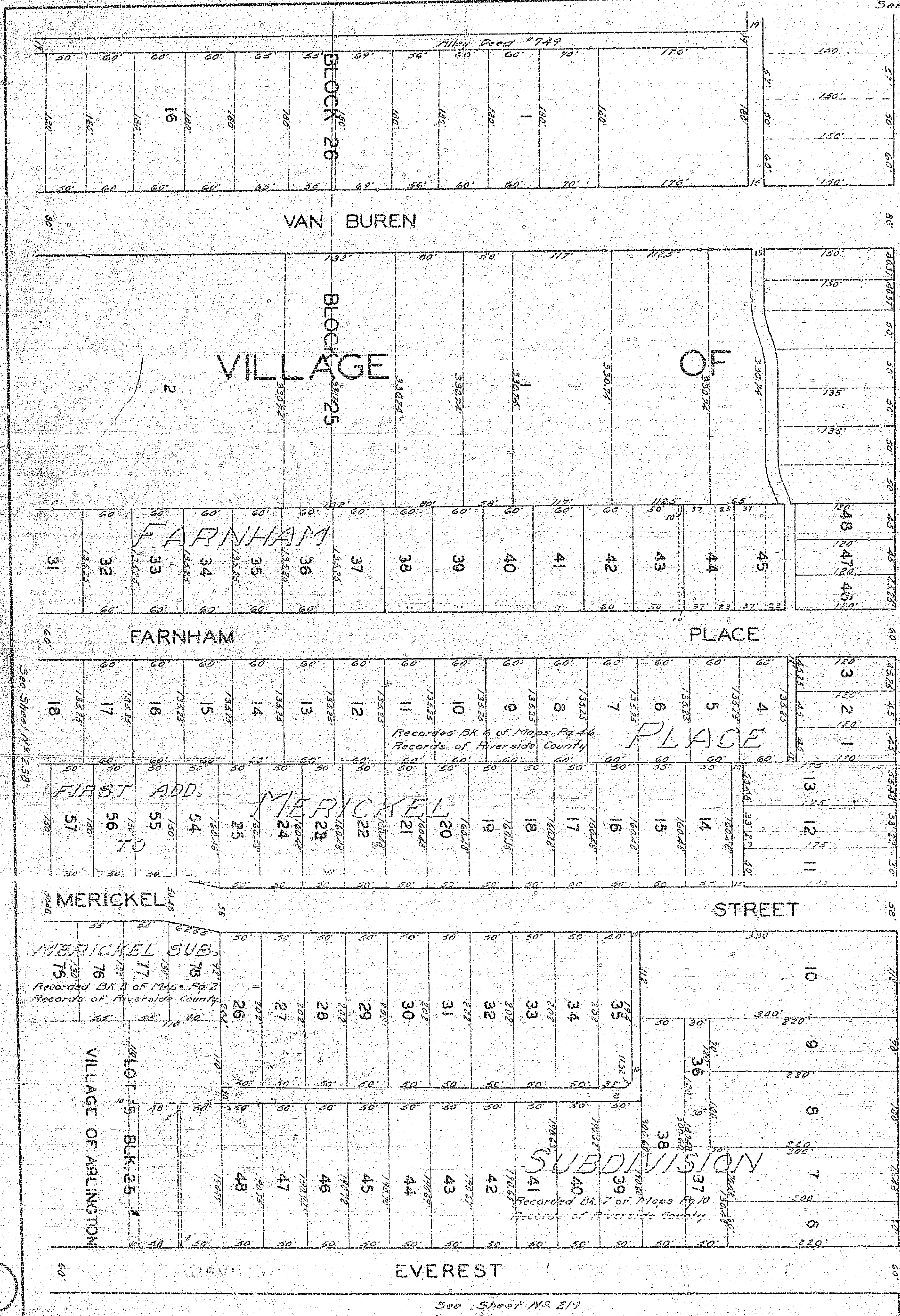
RECORDED AT _____ O'CLOCK _____ M. THIS _____ DAY OF _____ 1952

SUPERINTENDENT OF STREETS OF THE CITY OF RIVERSIDE.

312

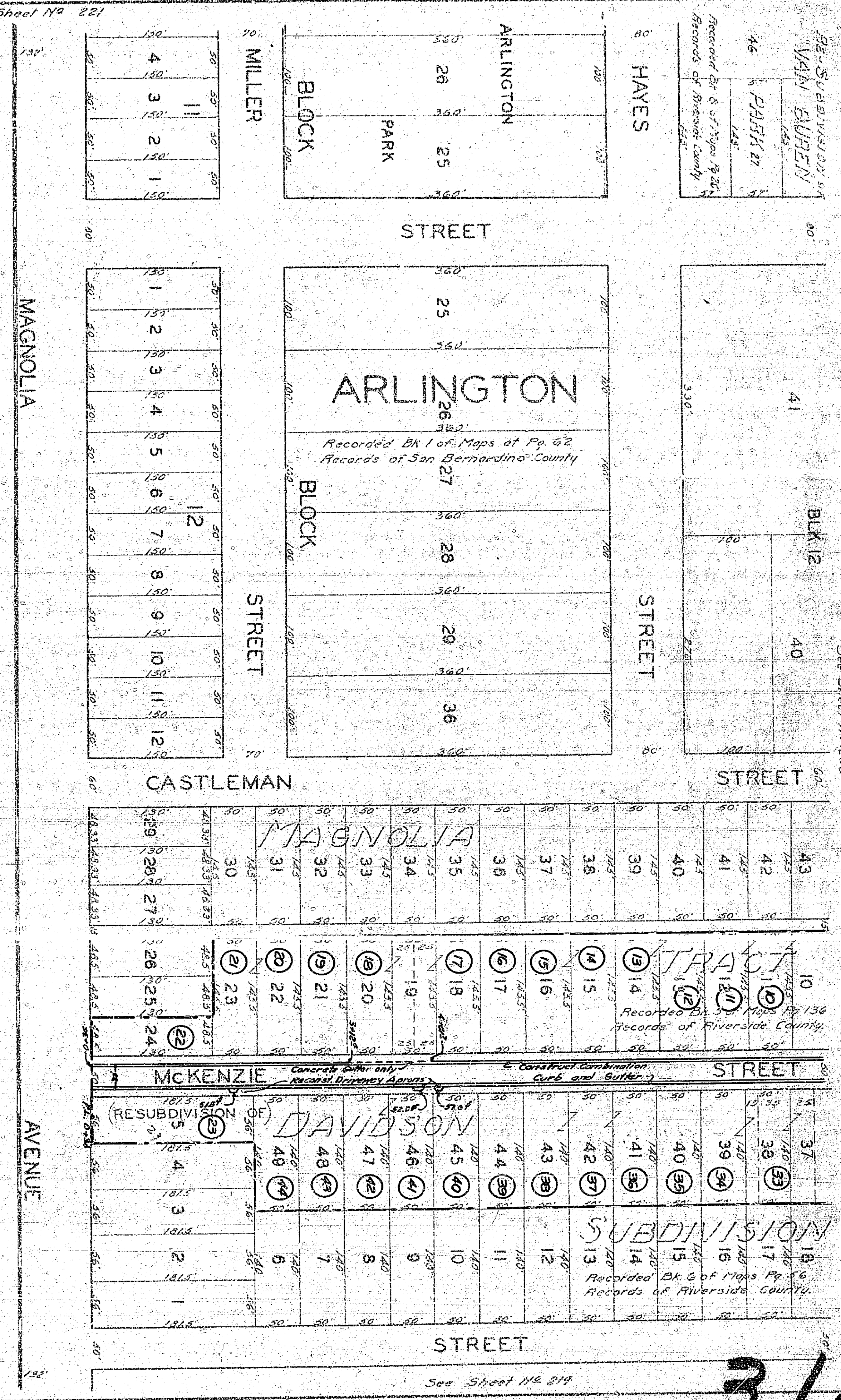
File with 312

See Sheet No 221



See Sheet No 219

220



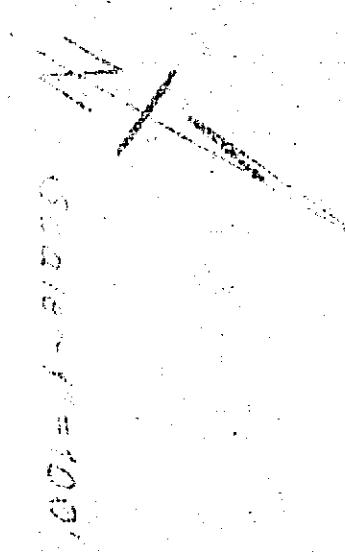
See Sheet No 219

SCALE 1"=100'

See Sheet No 209

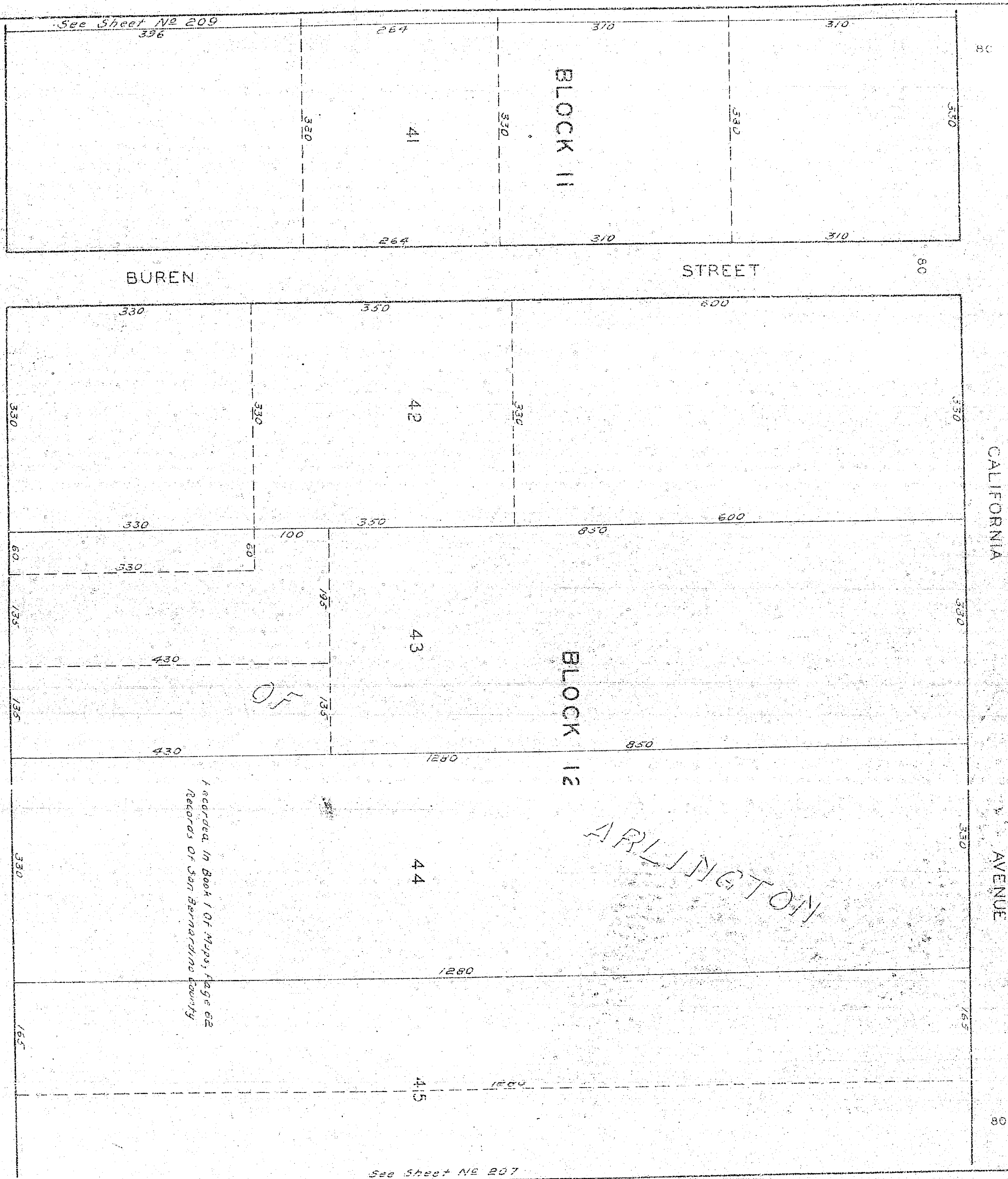
SHEET 2 TOTAL 3

312



See Sheet NE 197

SHEET 3 TOTAL 3



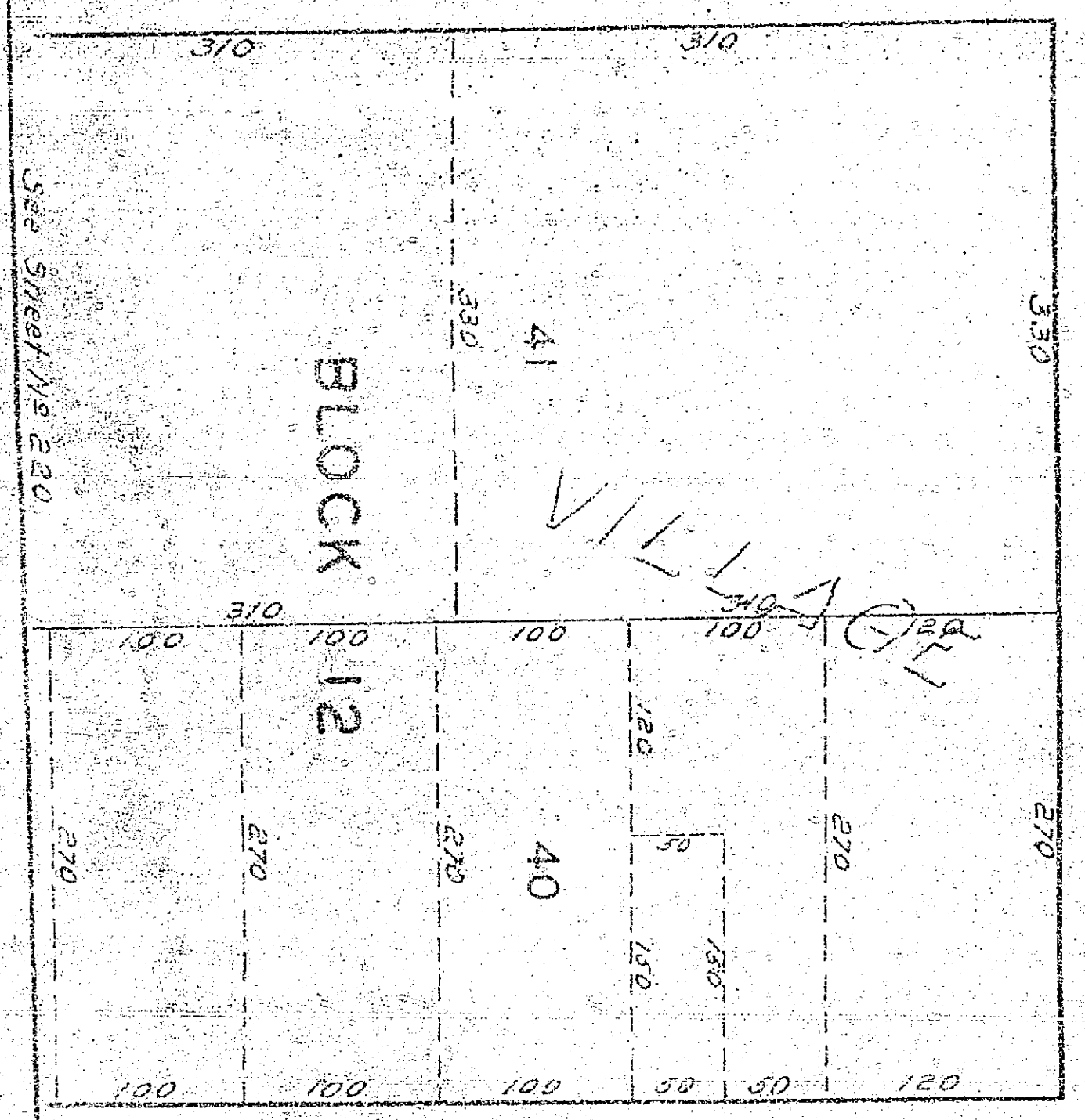
See Sheet NE 209

See Sheet NE 207

Recorded in Book 1 of Maps, Page 62
Records of San Bernardino County

35	35	70	150	1	15
35	35	70	150	2	15
35	35	70	150	3	15
35	35	70	150	4	15
35	35	70	150	5	15
35	35	70	150	6	15
35	35	70	150	7	15
35	35	70	150	8	15
35	35	70	150	9	15
35	35	70	150	10	15
35	35	70	150	11	15
35	35	70	150	12	15
35	35	70	150	13	15
35	35	70	150	14	15
35	35	70	150	15	15
35	35	70	150	16	15
35	35	70	150	17	15
35	35	70	150	18	15
35	35	70	150	19	15
35	35	70	150	20	15
35	35	70	150	21	15
35	35	70	150	22	15
35	35	70	150	23	15
35	35	70	150	24	15
35	35	70	150	25	15
35	35	70	150	26	15
35	35	70	150	27	15

Recorded in Book 6 of Maps, Page 26
Records of Riverside County



35	35	70	150	1	15
35	35	70	150	2	15
35	35	70	150	3	15
35	35	70	150	4	15
35	35	70	150	5	15
35	35	70	150	6	15
35	35	70	150	7	15
35	35	70	150	8	15
35	35	70	150	9	15
35	35	70	150	10	15
35	35	70	150	11	15
35	35	70	150	12	15
35	35	70	150	13	15
35	35	70	150	14	15
35	35	70	150	15	15
35	35	70	150	16	15
35	35	70	150	17	15
35	35	70	150	18	15
35	35	70	150	19	15
35	35	70	150	20	15
35	35	70	150	21	15
35	35	70	150	22	15
35	35	70	150	23	15
35	35	70	150	24	15
35	35	70	150	25	15
35	35	70	150	26	15
35	35	70	150	27	15

312

208