

THESE PLANS APPROVED AND ADOPTED BY THE MAYOR AND COUNCIL OF THE CITY OF RIVERSIDE, STATE OF CALIFORNIA, ON THIS 22ND DAY OF January, 1952

W. H. Irvine
CITY CLERK

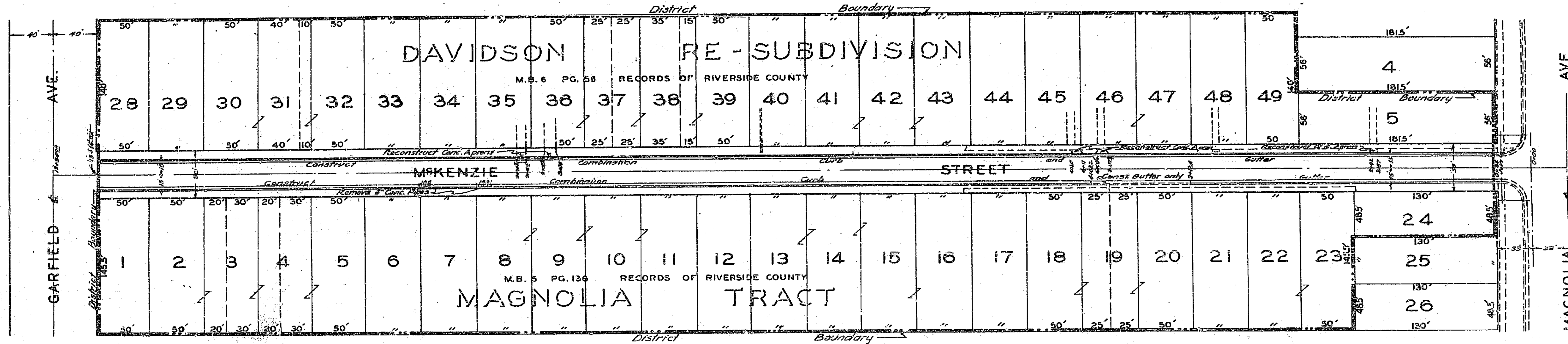
PLAN AND PROFILE NO 312
SHOWING CURBS AND GUTTERS TO BE CONSTRUCTED IN
M^{RS} KENZIE STREET
BETWEEN MAGNOLIA AVENUE AND GARFIELD AVENUE.
CITY OF RIVERSIDE - CALIFORNIA

F.B. 423-70
F.B. 499-32

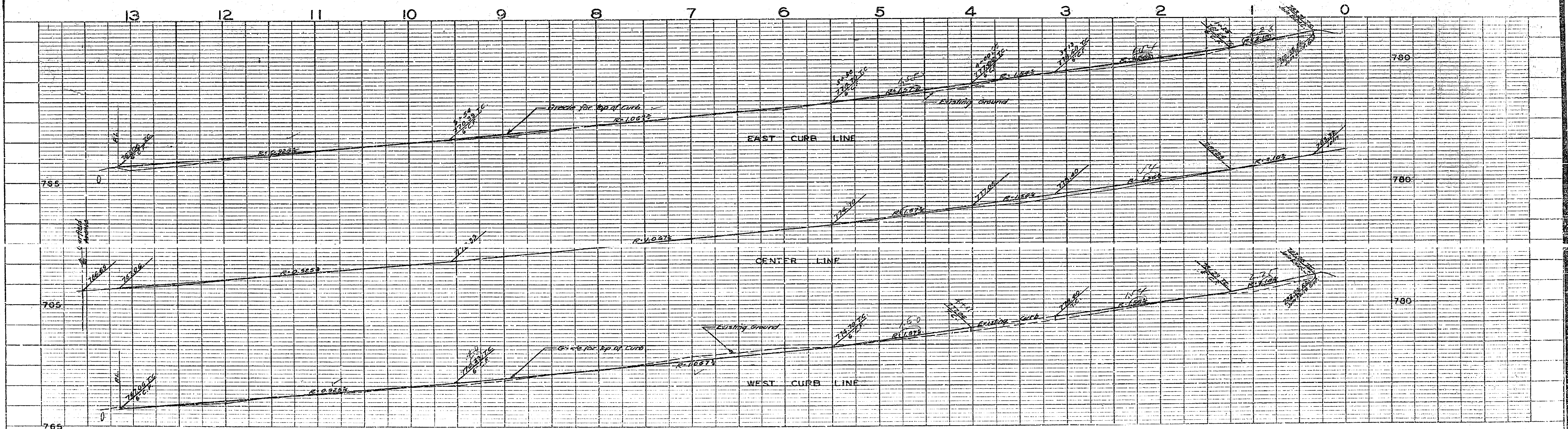
SCALES: HOR. 1 IN. = 50 FT.
VERT. 1 IN. = 5 FT.

APPROVED *M. H. Irvine*
M.H. IRVINE, REG. C.E. NO. 3011
CITY ENGINEER

DATE	
BY	
REVISION	
PLANNED	
NOTED	
DATE	
BY	
REVISION	
PLANNED	
NOTED	
DATE	
BY	
REVISION	



DATE	
BY	
REVISION	
PLANNED	
NOTED	
DATE	
BY	
REVISION	
PLANNED	
NOTED	
DATE	
BY	
REVISION	



312