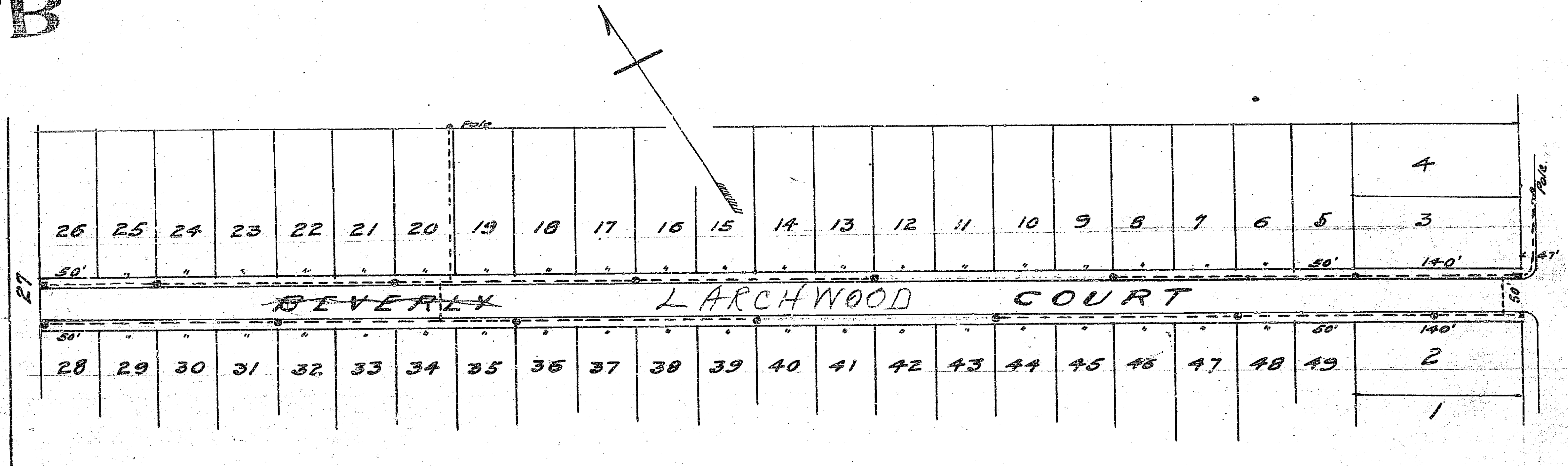


314 B

3



18

314 B

L.S. 1020

CITY OF RIVERSIDE
 MAP
 Showing proposed location of concrete one-light
 Posts, Conduit system & connecting feed lines on
 BEVERLY COURT
 Scale 1"=100ft
 Approved & adopted by the
 Board of Public Utilities June 2, 1912

H. P. Campbell
 City Engineer