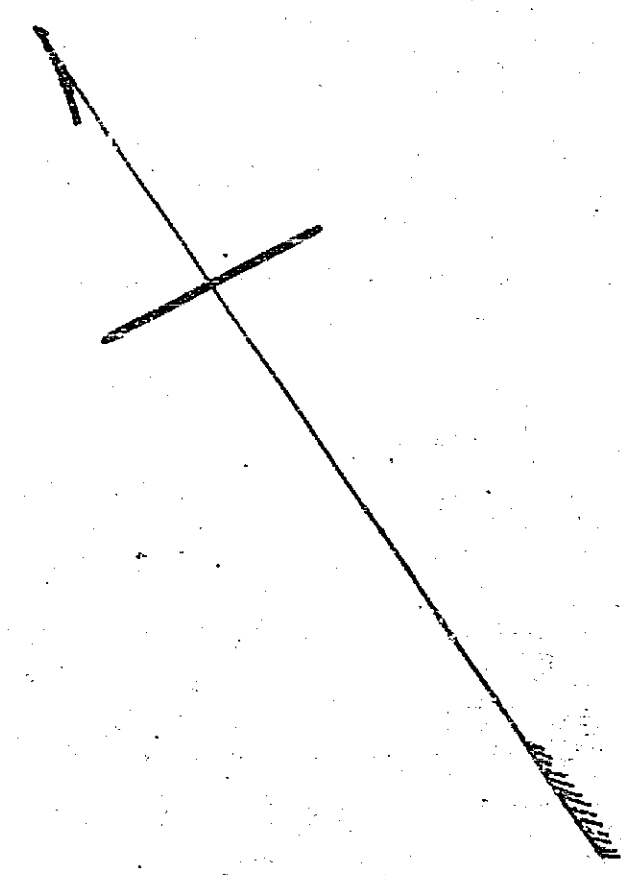
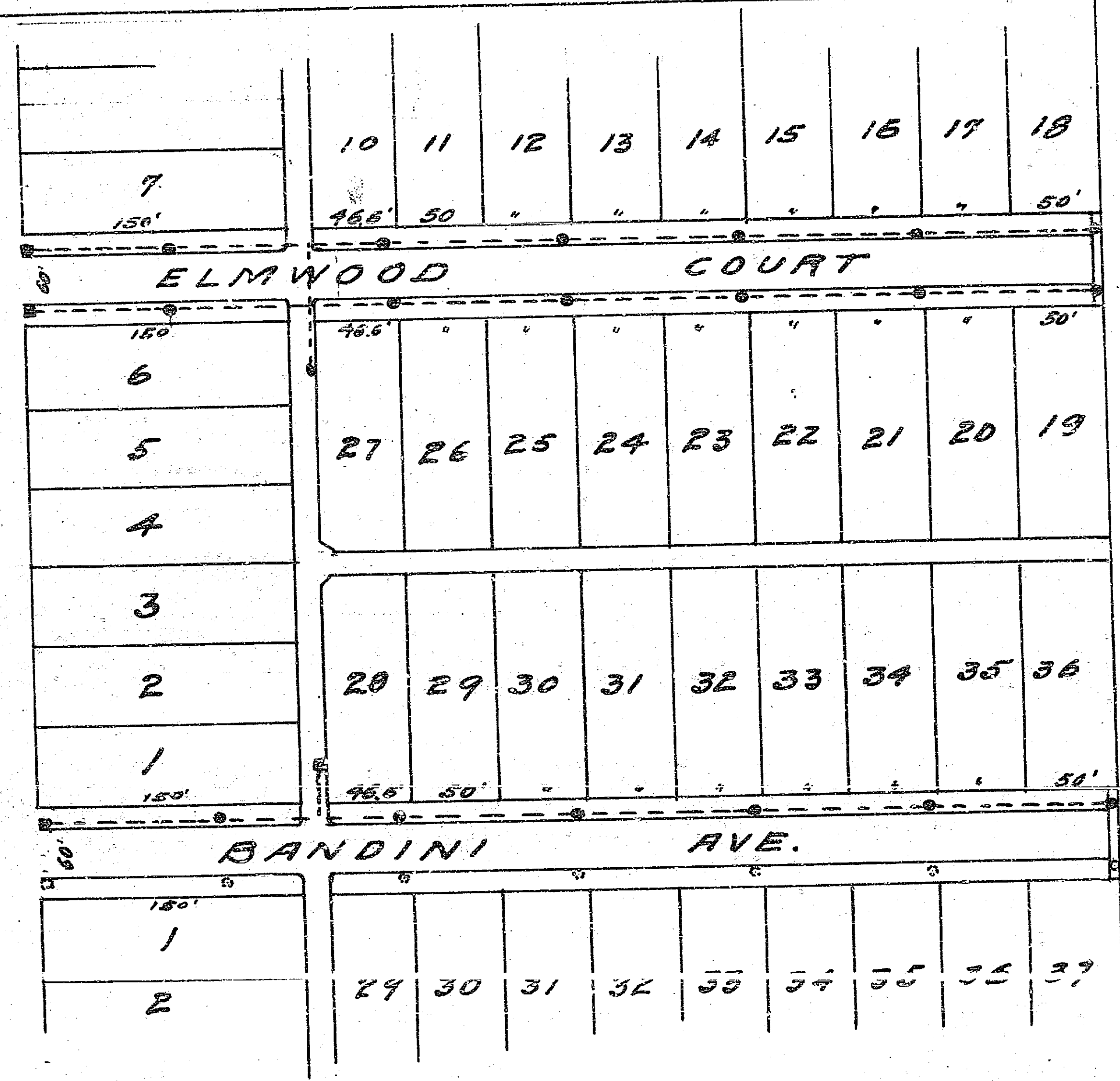


314

MAGNOLIA AVE.



LS 10/18

CITY OF RIVERSIDE  
MAP

Showing proposed location of concrete one-light  
Posts Conduit system & Connecting feed lines on  
ELMWOOD COURT & BANDINI AVE.

Scale 1"=100 FT

Approved & Adopted by the  
Board of Public Utilities June 1918

R.P. Campbell  
City Engineer

J. G. Clark  
Clerk

314 D

D

16