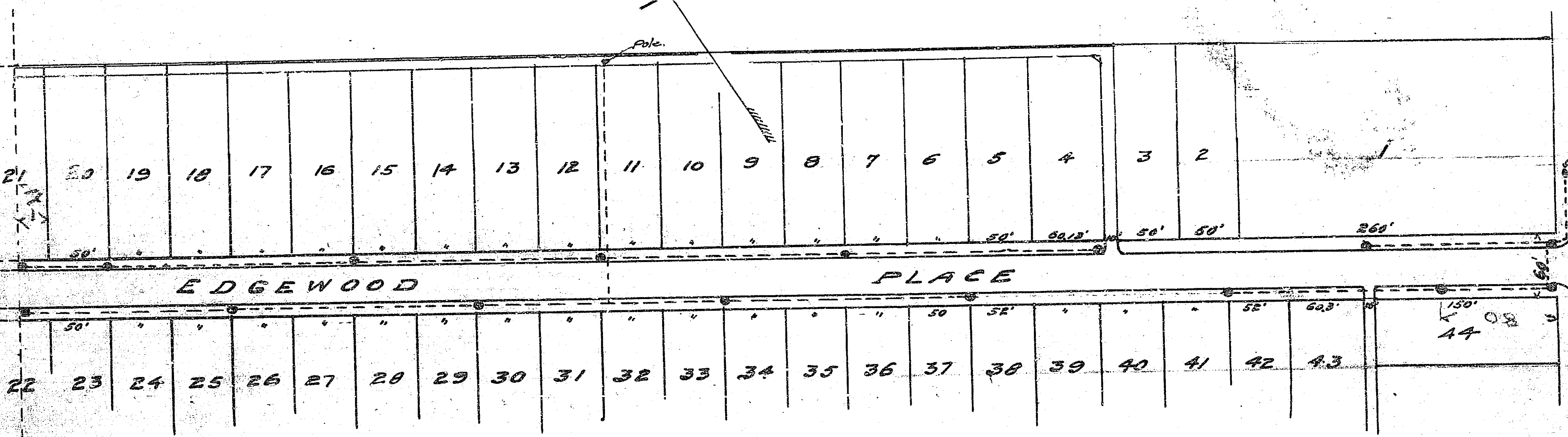


314 E

314 E

PROPOSED EXTENSION OF PALM AVE.



EDGEWOOD

PLACE

BROCKTON AVE.

1021
L.S. 1020

314 E

CITY OF RIVERSIDE
MAP

Showing proposed location of concrete one-light
posts, conduit system & connecting feed lines on

EDGEWOOD PLACE

Scale 1"=100 FT.

Approved & Adopted by the
Board of Public Utilities, June 1910

A.P. Campbell
City Engineer
J. H. Clark
Clerk