

INDEX MAP FOR  
PLANS AND PROFILES NO.  
**315**  
FOR THE CONSTRUCTION OF  
SANITARY SEWERS  
IN THE  
**HOOVER-MARIELLA  
SANITARY DISTRICT**

FB 535/43  
537/1

SCALES  
INDEX SHEET 1" = 100'  
PLANS 1" = 50'  
PROFILES 1" = 5'

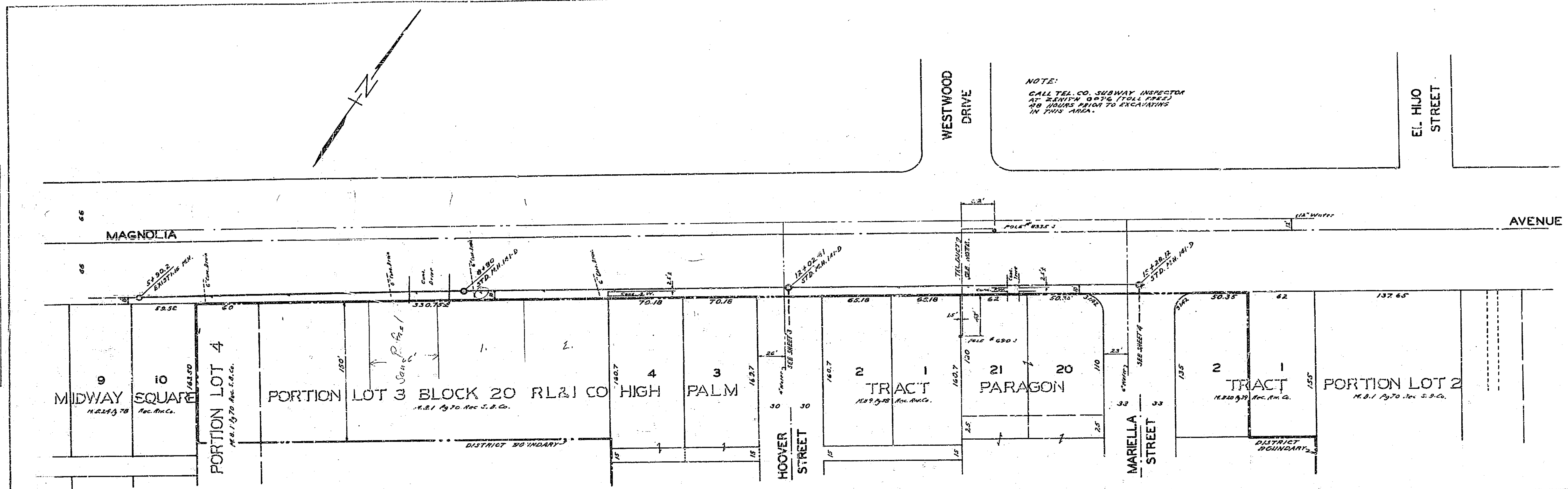
APPROVED *M. H. Irvine*  
M. H. IRVINE REG. C.E. 3011  
CITY ENGINEER

THESE PLANS APPROVED AND ADOPTED  
BY THE MAYOR AND COUNCIL OF THE CITY  
OF RIVERSIDE STATE OF CALIFORNIA ON  
THIS 14<sup>TH</sup> DAY OF APRIL 1953  
*J. B. White*  
CITY CLERK

315

PLAN	DATE
NO.	
BY	
CHECKED	
APPROVED	
NOTE BOOK	
ALIGNMENT CHECKED	
REF. OF WAY CHECKED	

PROFILE	DATE
NO.	
BY	
CHECKED	
APPROVED	
NOTE BOOK	
ALIGNMENT CHECKED	
REF. OF WAY CHECKED	



NOTE:  
CALL TEL. CO. SUBWAY INSPECTOR  
AT 8:00 A.M. 24 HOURS PRIOR TO EXCAVATING  
IN THIS AREA.

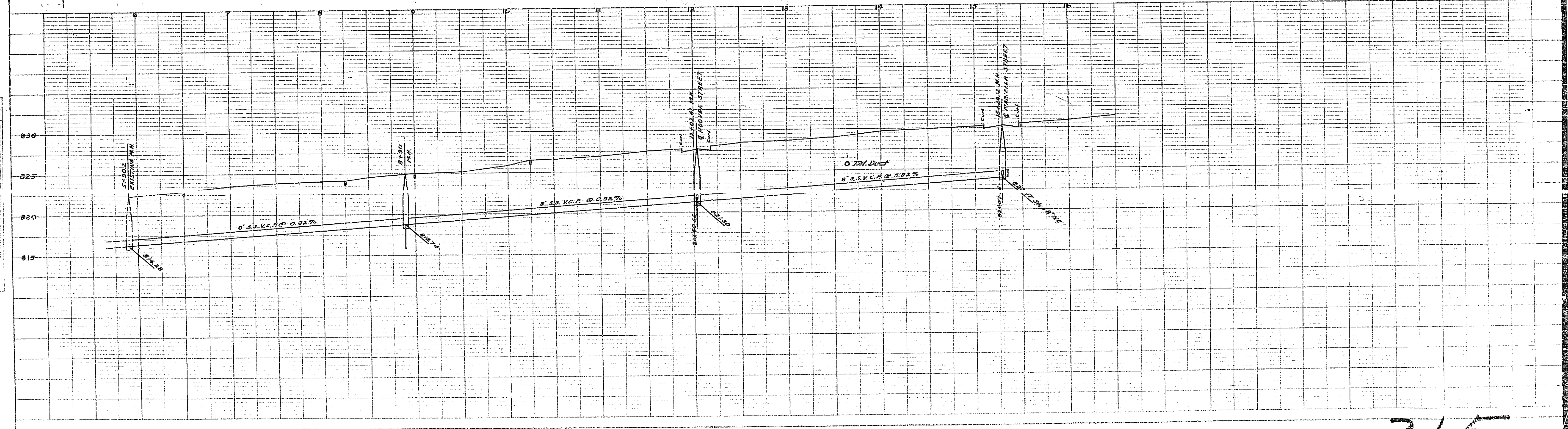
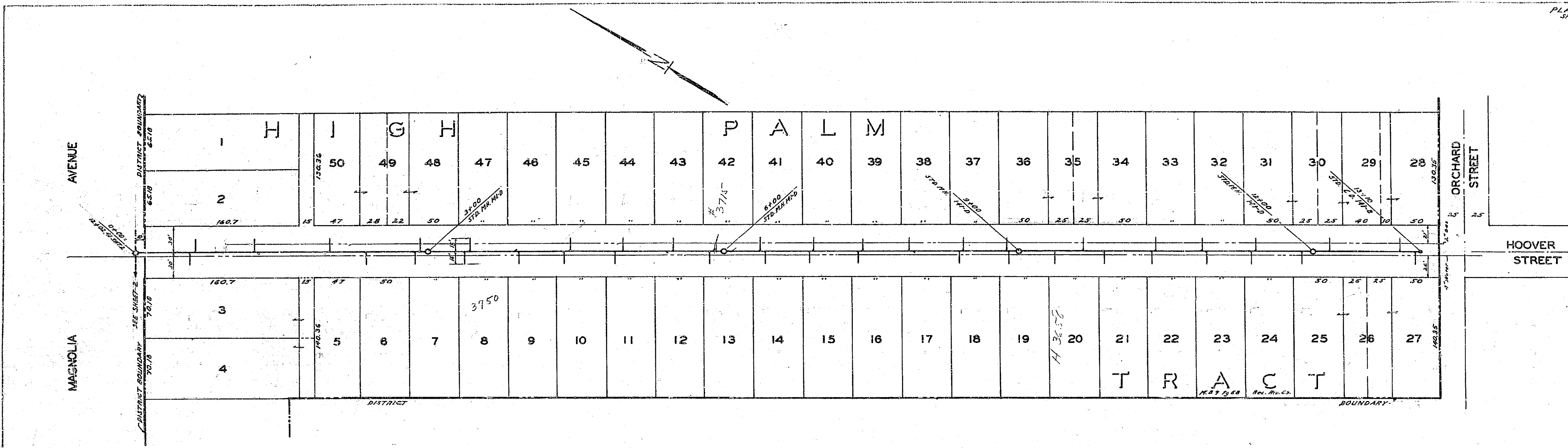
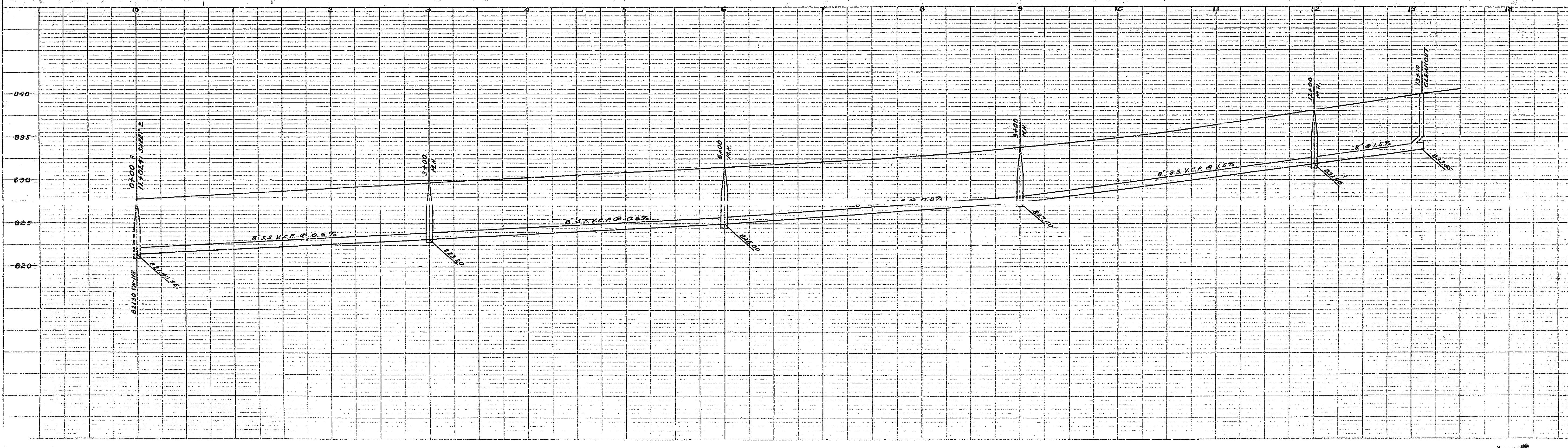


PLATE 1 - PLAN & PROFILE OF 2' & 4' & 6' STANDARD  
HORIZONTAL CURVES AND VERTICAL  
CURVES

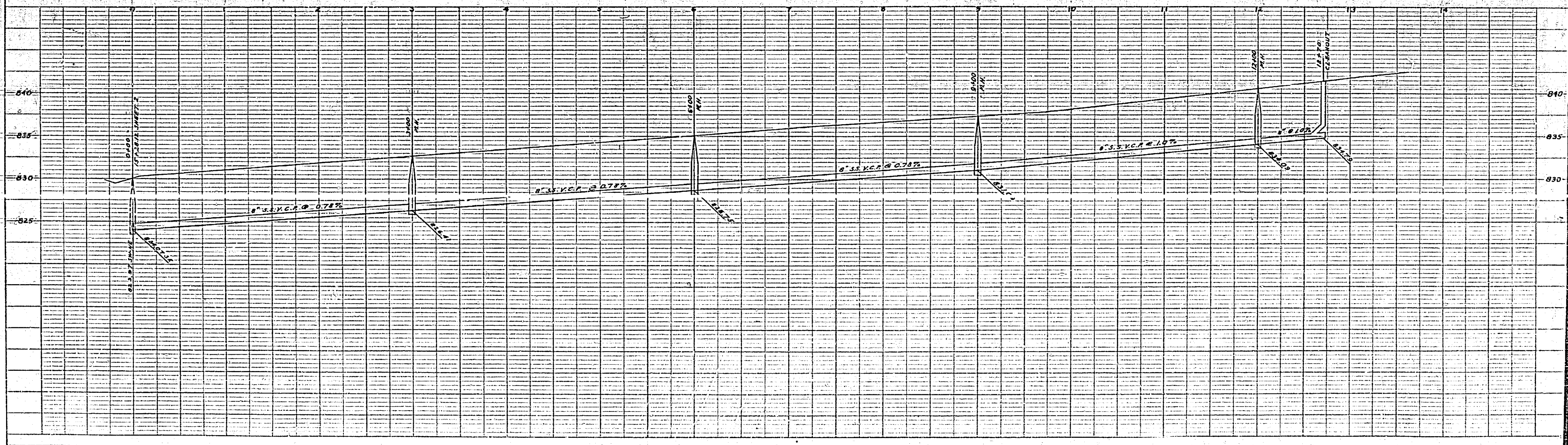
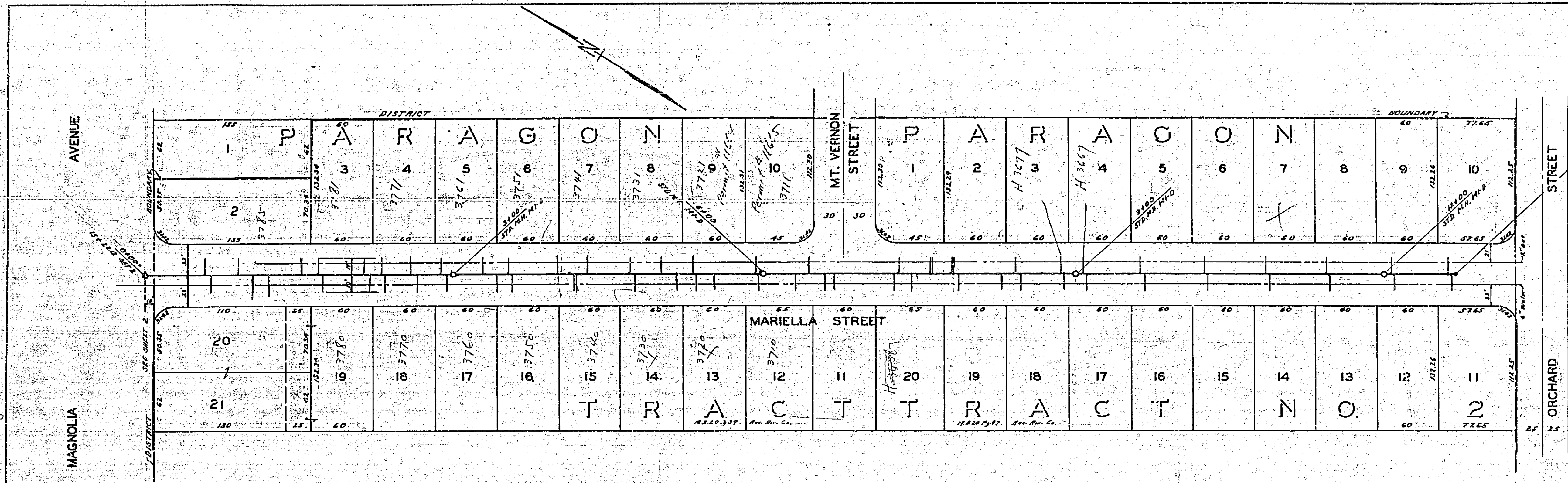
PLAN	DATE
REVISED	DATE
BY	
CHECKED	
DATE	
NO.	



PROFILE	DATE
REVISED	DATE
BY	
CHECKED	
DATE	
NO.	



315



PLAN	DATE	BY	CHECK
DATE	BY	BY	BY
NOTE BOOK ALIGNMENT CHECKED			
NO. OF V.P. CHECKED			

PROFILE	DATE	BY	CHECK
DATE	BY	BY	BY
NOTE BOOK GRADE CHECKED			
NO. OF V.P. CHECKED			
STRUCTURE ALIGNMENT CHECKED			

315