

ASSESSMENT NO. 562

DIAGRAM

EXHIBITING HOOVER-MARIELLA SANITARY SEWER DISTRICT

IN THE CITY OF RIVERSIDE ON WHICH WORK HAS BEEN DONE UNDER MY OFFICIAL CONTRACT AS SUPERINTENDENT OF STREETS OF SAID CITY WITH C.O. BRAND DATED JULY 8, 1953






FOR THE CONSTRUCTION OF SANITARY SEWER, MANHOLES, WYE BRANCHES, HOUSE CONNECTIONS & CLEANOUTS AS IS MORE PARTICULARLY DESCRIBED IN SAID CONTRACT TO WHICH REFERENCE IS HEREBY MADE FOR FURTHER PARTICULARS; SAID DIAGRAM ALSO SHOWS THE RELATIVE LOCATION OF EACH LOT, PIECE OR PARCEL OF LAND ASSESSED FOR THE WORK DONE NUMBERED IN RED INK TO CORRESPOND TO THE RED INK NUMBERS IN THE ASSESSMENT HEREIN FIGURES NEXT TO PROPERTY LINES SHOW LENGTH OF SAID LINES IN FEET. THE MARK (V) MEANS 'V' TO PROPERTY LINES THAT DIFFER FROM THE RECORDED SUBDIVISIONS ARE SHOWN BY BROKEN LINES THE DISTRICT BENEFITED IS BOUNDARY BY A HEAVY DASHED LINE. PROPERTY COVERED BY THIS ASSESSMENT IS SHOWN ON THE FOLLOWING RECORDED MAPS:

- HIGH PALM TRACT M. B. 9, PG. 58, REC. RIV. CO.
- PARAGON TRACT M. B. 20, PG. 39, REC. RIV. CO.
- PARACON TRACT NO. 2 M. B. 20, PG. 47, REC. RIV. CO.

WHEREBY CERTIFY THAT THIS ASSESSMENT WAS MADE BY ME AS SUPERINTENDENT OF THE CITY OF RIVERSIDE ON THE 13th DAY OF APRIL, 1953.

CITY CLERK OF THE CITY OF RIVERSIDE

HEREIN THE LEGEND OF THE DIFFERENT KINDS OF WORK PERFORMED IS SHOWN AS FOLLOWS:

- SANITARY SEWER 
- STD. MANHOLE 
- WYE BRANCH 
- HOUSE CONNECTION 
- CLEANOUT 

SUPERINTENDENT CITY ENGINEER OF THE CITY OF RIVERSIDE THE FOLLOWING IS A STATEMENT OF AMOUNTS OF DIFFERENT KINDS OF WORK DONE BY C.O. BRAND UNDER

CONTRACT DATED JULY 8, 1953 PURSUANT TO RESOLUTION OF INTENTION NO. 5710 ADOPTED BY THE CITY COUNCIL OF THE CITY OF RIVERSIDE ON THE 14TH DAY OF APRIL, 1953

8' VITRIFIED CLAY PIPE SEWER	3520 LIN. FT.
STD. MANHOLES	11
8"x4" WYE BRANCHES	95
HOUSE CONNECTIONS	1399 LIN. FT.
CLEANOUTS	2

AT SAID CITY OF RIVERSIDE THIS DAY OF

CITY ENGINEER OF THE CITY OF RIVERSIDE

I HEREBY CERTIFY THAT THE ABOVE WORK WAS DONE IN ACCORDANCE WITH LINES AND GRADES FURNISHED BY ME AND THAT THE DIAGRAM OF THE ASSESSMENT DISTRICT FOR THE SAME IS CORRECT.

CITY ENGINEER OF THE CITY OF RIVERSIDE

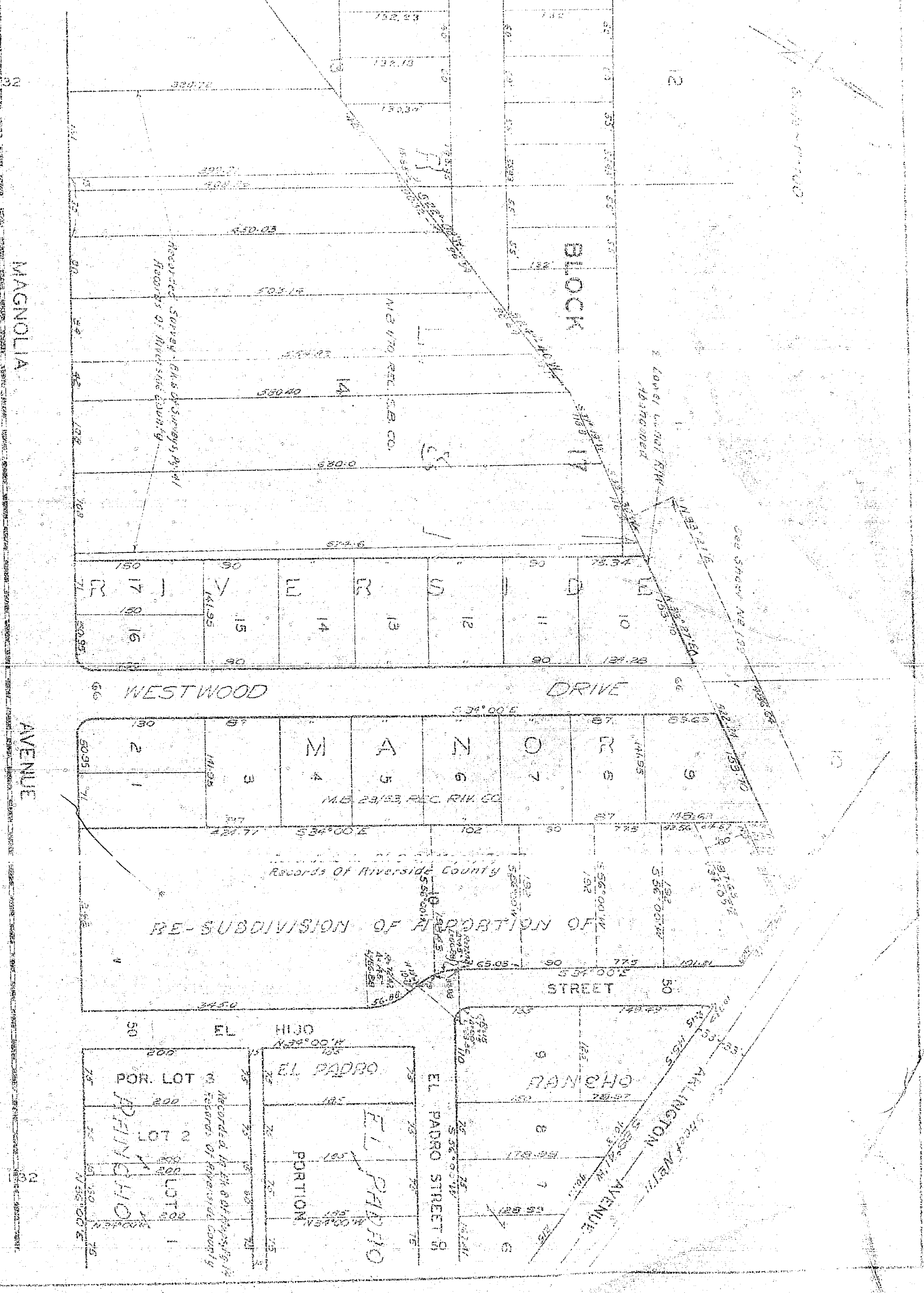
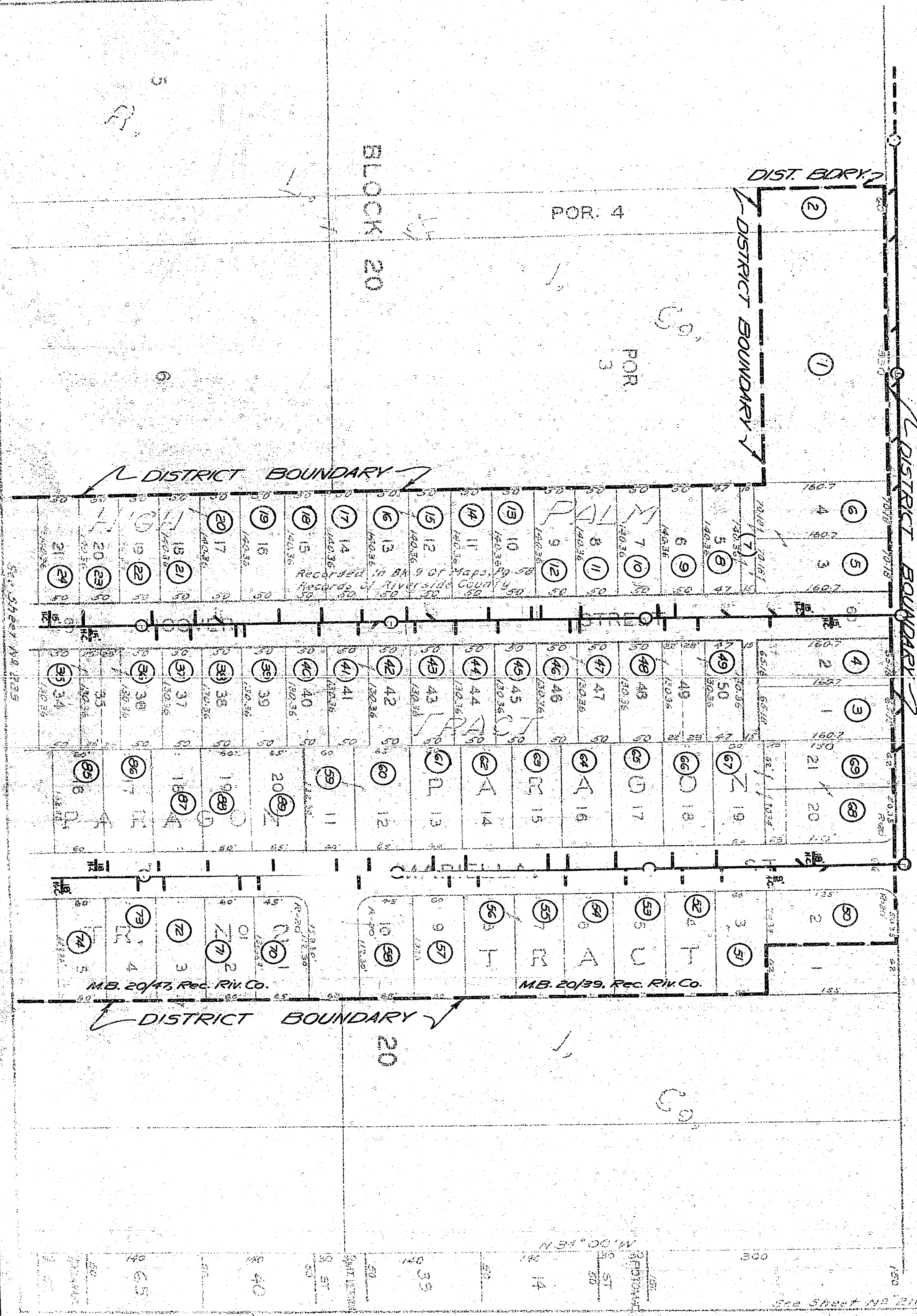
RECORDED AT 4:19 O'CLOCK P. M. THIS 24TH DAY OF NOVEMBER 1953

SUPERINTENDENT OF STREETS OF THE CITY OF RIVERSIDE

315

3/5

See Sheet No 212



See Sheet No 210

3/5

Scale 1"=100'

See Sheet No 211

Block 6

DISTRICT BOUNDARY

Recorded in Bk. 14 of Maps, Pgs. 122 & 23
Records of Riverside County

Block 7

Recorded in Bk. 3 of Maps, Pgs. 2
Records of San Bernardino Co.

DISTRICT BOUNDARY

Block 8

MADISON

4 5 6 7 8 9 10

Recorded in Bk. 14 of Maps, Pgs. 122 & 23
Records of Riverside County

11 12 13 14 15 16 17 18 19

UPPER CANAL

See Sheet No 228

24 25 26 27 28

WATER COMPANY

INDIANA

35 36 37 38 39 40 41 42 43

44 45 46 47 48 49 50 51 52

PARK

SAYWARD

Recorded in Bk. 3 of Maps, Pgs. 2
Records of San Bernardino Co.

MADISON

53 54 55 56 57 58 59 60 61 62

PARK

AVENUE

E V A N S

Block 16

Block 15

Block 14

Block 13

Block 12

Block 11

Block 10

Block 9

Block 8

Block 7

Block 6

Block 5