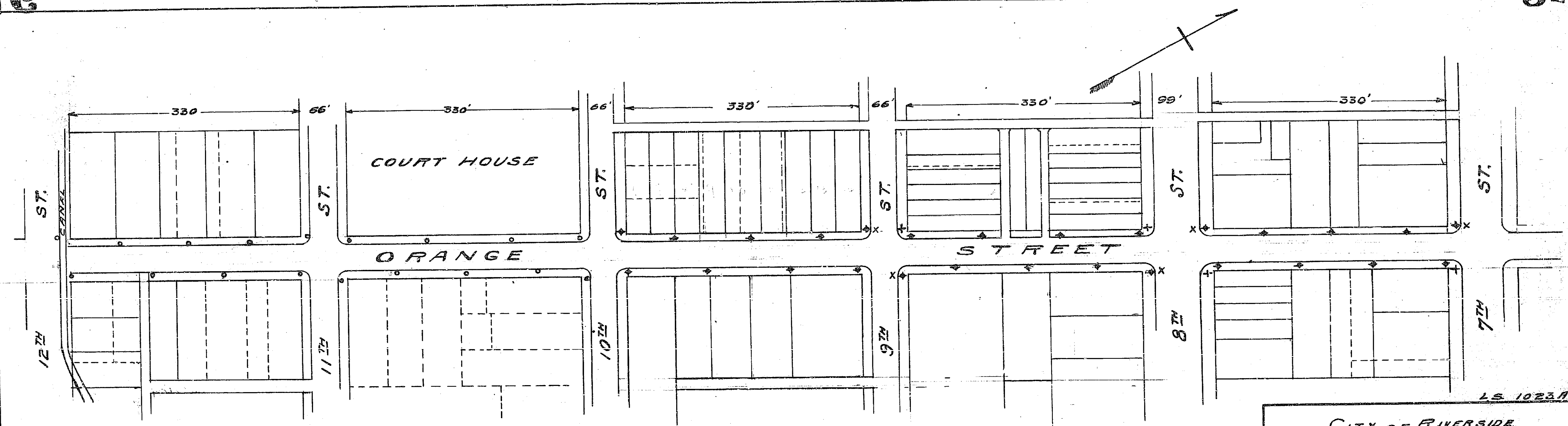


316

316



Note: One-light Posts are shown thus ○  
 Three-light " " " " ◆  
 Three-light posts now in but to  
 be moved are shown thus +  
 Three-light posts now in that will  
 stay are shown thus ◆x

LS 1023A  
**CITY OF RIVERSIDE**  
**MAP**  
 Showing proposed location of concrete one- & three-light  
 Posts, Conduit system & connecting lead lines on  
ORANGE ST. Between 7<sup>th</sup> St & 12<sup>th</sup> St.  
 Scale, 1"=100 FT July 1912  
 H.P. Campbell  
 City Engineer

316

316

316