

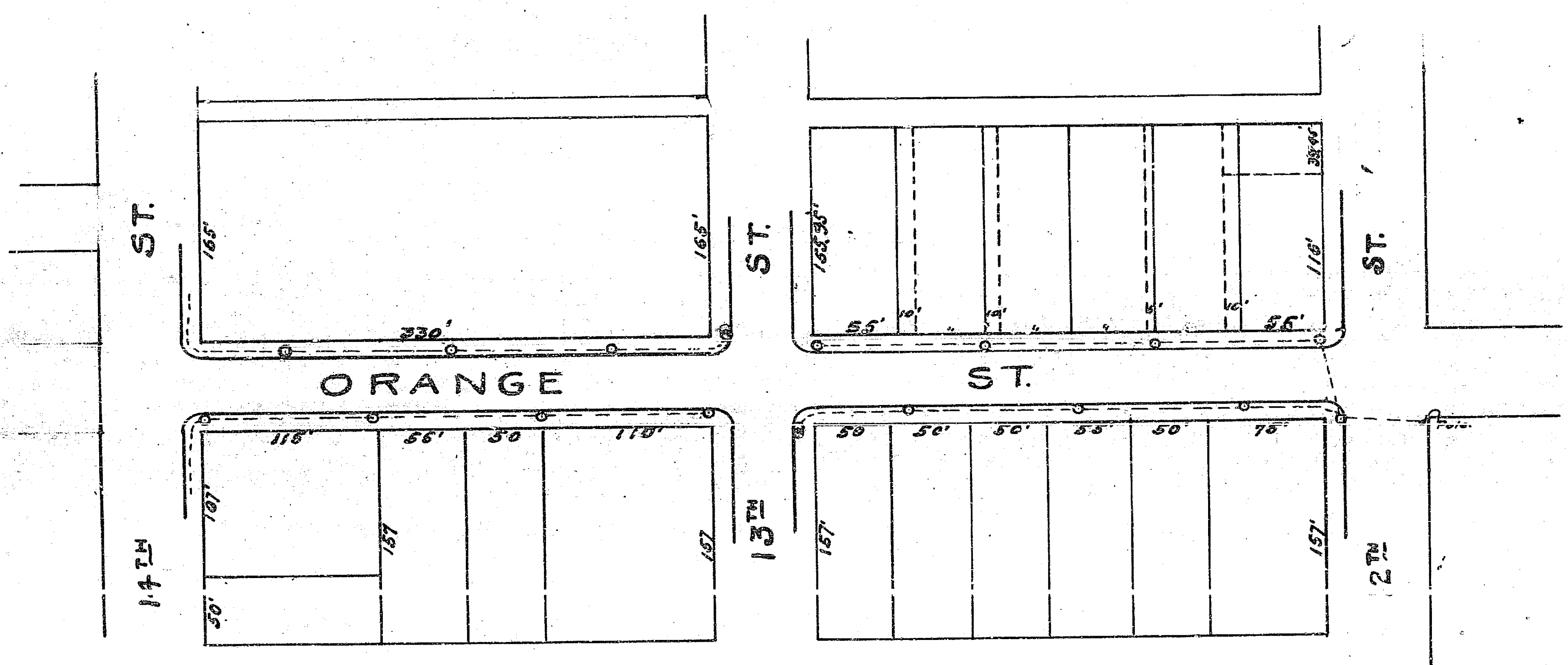
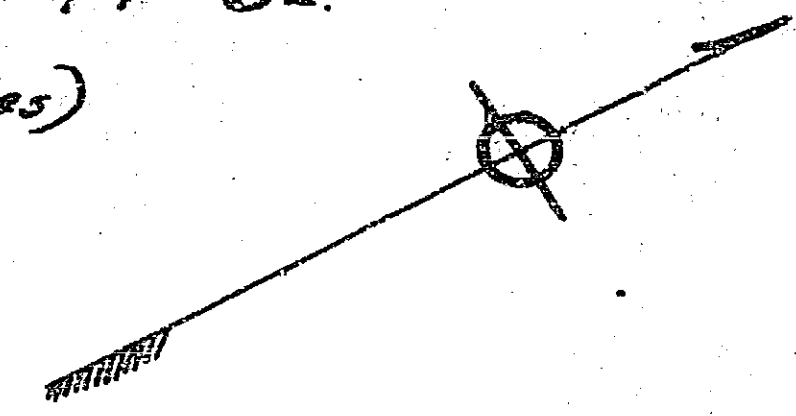
MAP SHOWING PROPOSED LOCATION OF IRON LIGHT POSTS
 CONDUIT SYSTEM & CONNECTING FEED LINES ON ORANGE ST FROM 12TH ST. TO 14TH ST.

IN THE MANNER CONTEMPLATED BY RESOLUTION # (New Series)

Scale 1" = 100 FT.

A.P. Campbell
 City Engineer

Riverside Feb. - 1912 California.



316 B

B 10 10 10