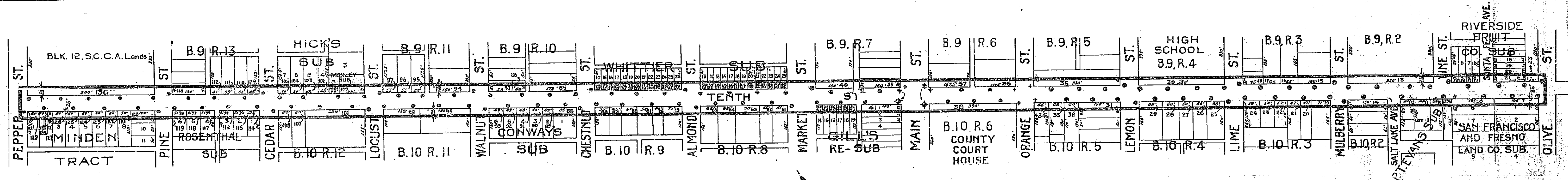


318 - E

318



Note~
 New Light Posts to be installed are shown thus: •
 Light Posts already installed are shown thus: +
 Light Posts to be moved are shown thus: *
 Light Posts to be moved are to be reinstalled at places indicated thus: ✦
 Assessment Diagram numbers are shown by red figures

MAP SHOWING
 PROPOSED LIGHTING SYSTEM
TENTH ST.
 FROM OLIVE TO PEPPER ST.,
 AND THE DISTRICT BENEFITED.
 District benefited is bounded by a green line thus: ———

318 E 818