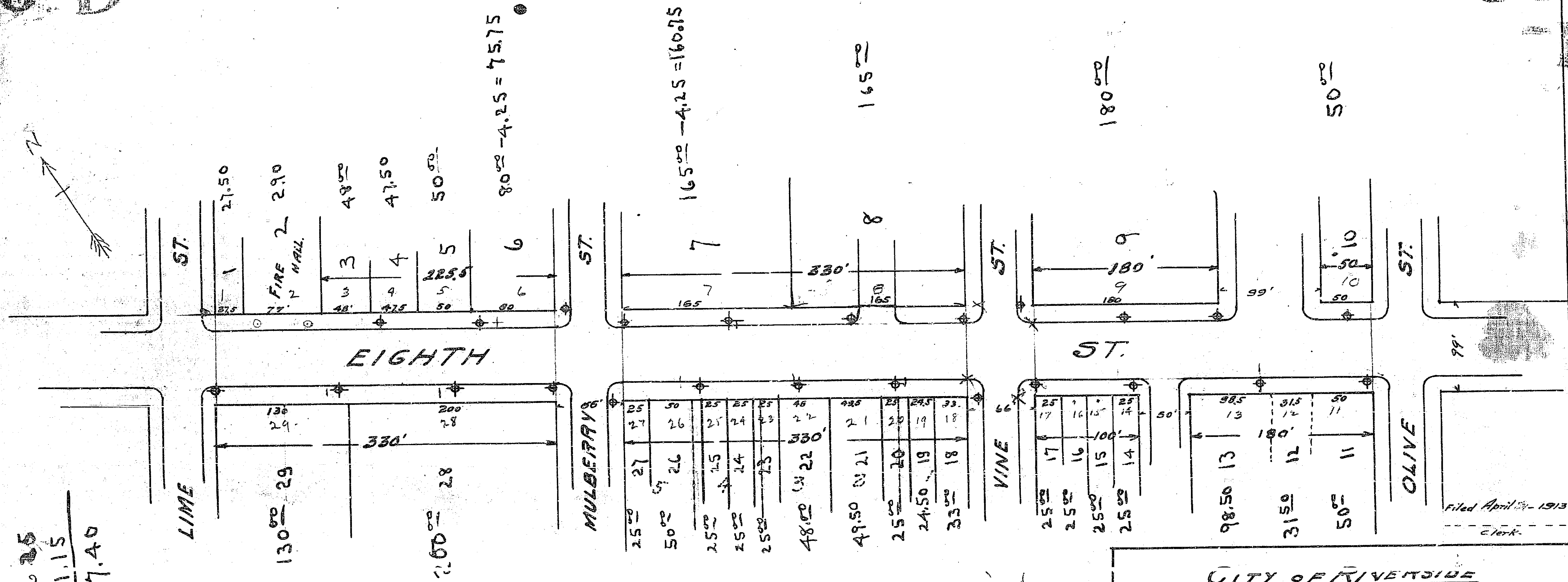


Contract 162635
 Smc. Exp. 121.15
 Total 1747.40



See Drawing
 of June 1913.

CITY OF RIVERSIDE
 MAP
 Showing proposed location of Concrete Three-light
 Posts, Conduits System & connecting feed lines on
 EIGHTH ST. between Lime & Olive ST.
 Scale 1" = 100 FT
 A.P. Campbell
 City Engineer
 April 21-1913.

Filed April 24-1913
 Clerk.

320 D-03