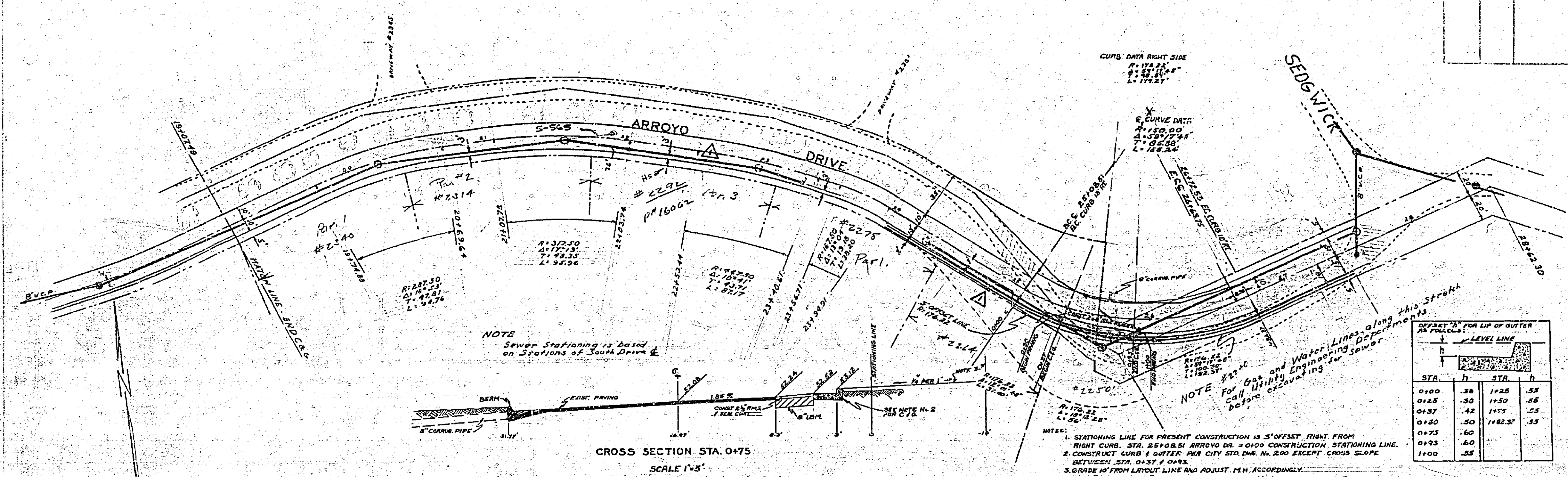


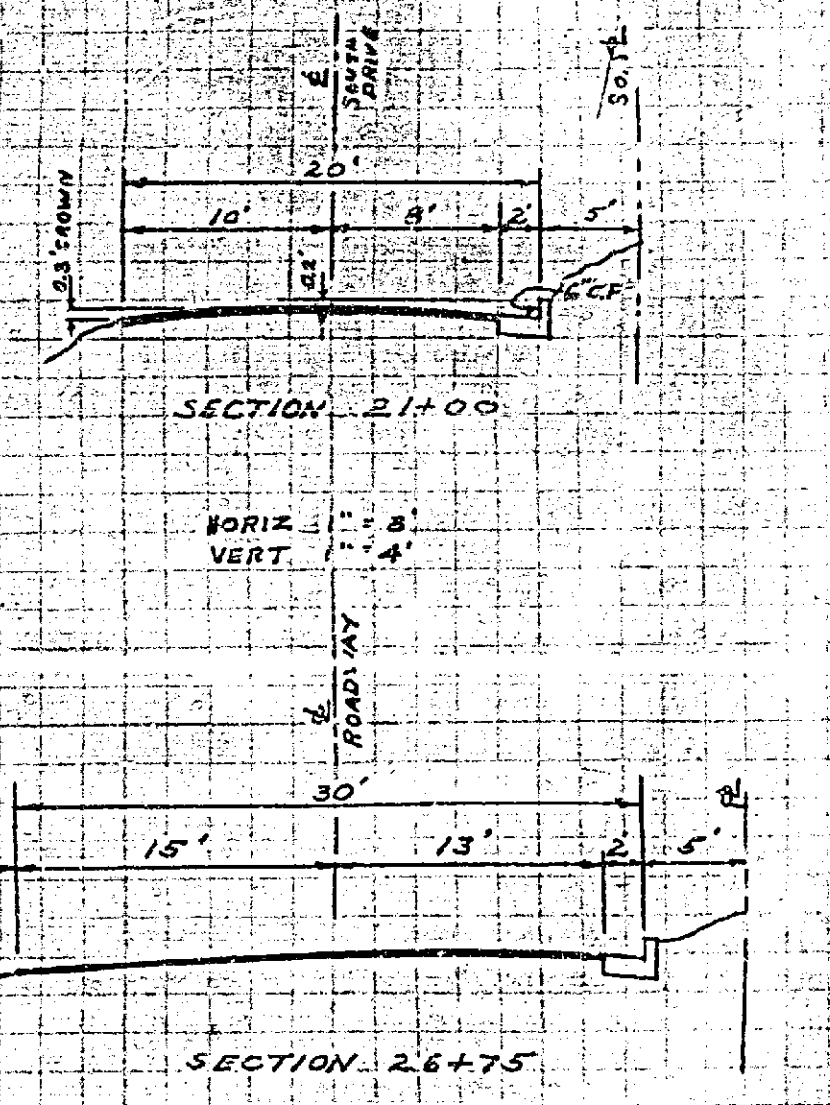
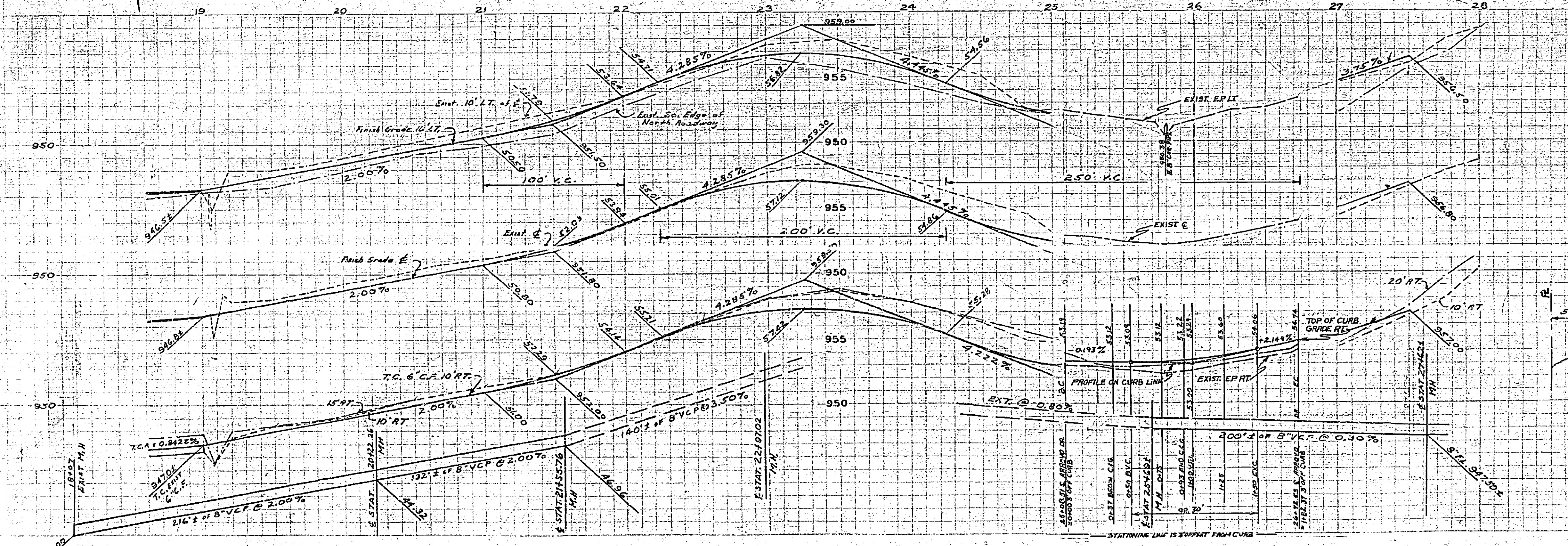
REVISIONS		
MARK	DATE	DESCRIPTION
△	7-24-41	As built sewer BE

PROPOSED IMPROVEMENT OF
ARROYO DRIVE
 SCALE 1"=40'
 CITY OF RIVERSIDE - CALIFORNIA
 P.B. 547/6
 F.B. 662 / 38-46
 B.M. ELEV. 963.77 - RR SPIKE IN
 POLE 8073 J N. SIDE ARROYO
 DR. 100 ELY. OF SEDGWICK R.M.



STA.	h	STA.	h
0+00	.38	1+25	.55
0+15	.30	1+50	.55
0+30	.42	1+75	.55
0+45	.50	1+82.5'	.55
0+75	.60		
0+93	.60		
1+00	.55		

APPROVED *M.H. Irvine*
 M.H. IRVINE, C.E. No. 3011
 CITY ENGINEER
 Approved for curb and gutter construction 0+57' to 0+93'.
 Date 10/13/47
 Director of Public Works

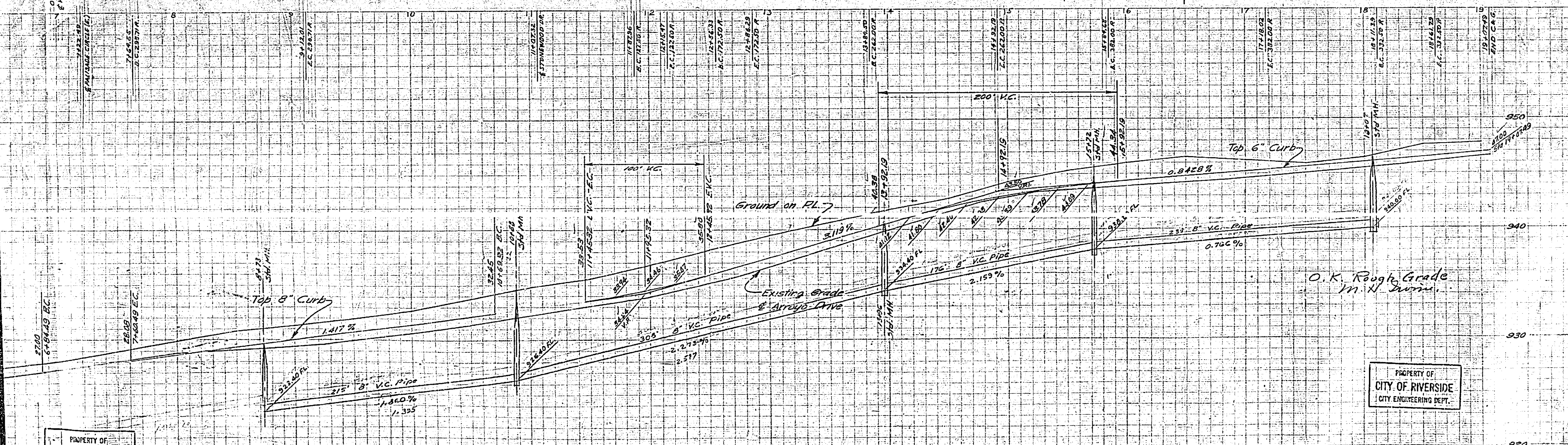
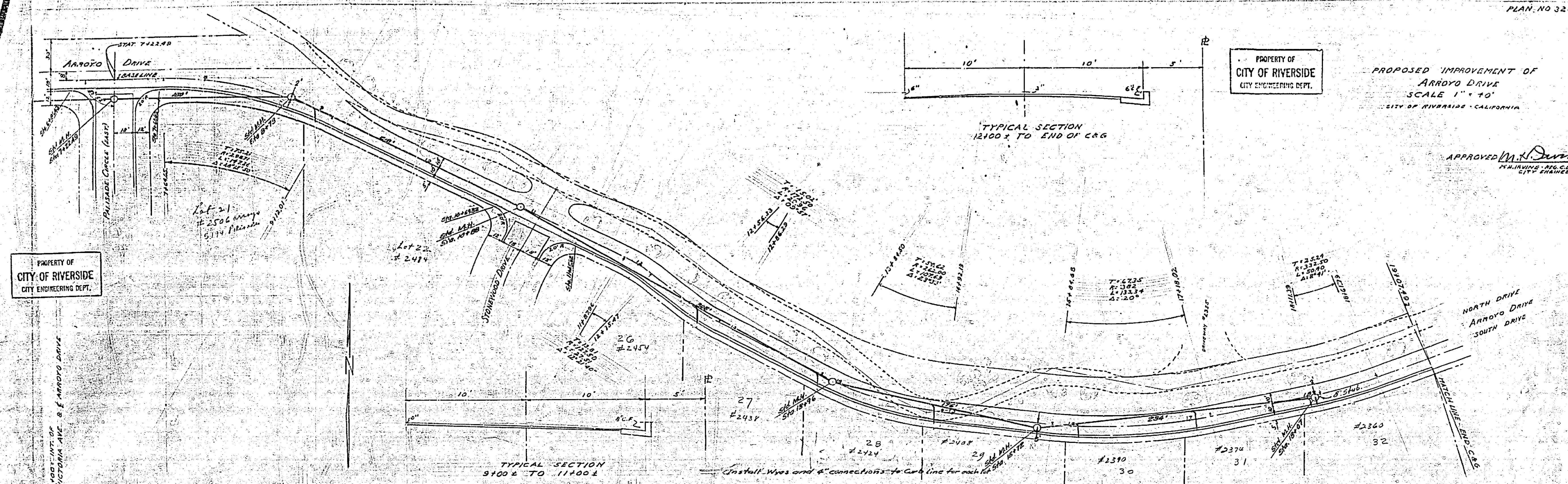


328C

PROPERTY OF
CITY OF RIVERSIDE
CITY ENGINEERING DEPT.

PROPOSED IMPROVEMENT OF
ARROYO DRIVE
SCALE 1" = 40'
CITY OF RIVERSIDE - CALIFORNIA

APPROVED *M. J. Devin*
M. J. DEVIN - REG. CE 3011
CITY ENGINEER



PROPERTY OF
CITY OF RIVERSIDE
CITY ENGINEERING DEPT.

PROPERTY OF
CITY OF RIVERSIDE
CITY ENGINEERING DEPT.

328C