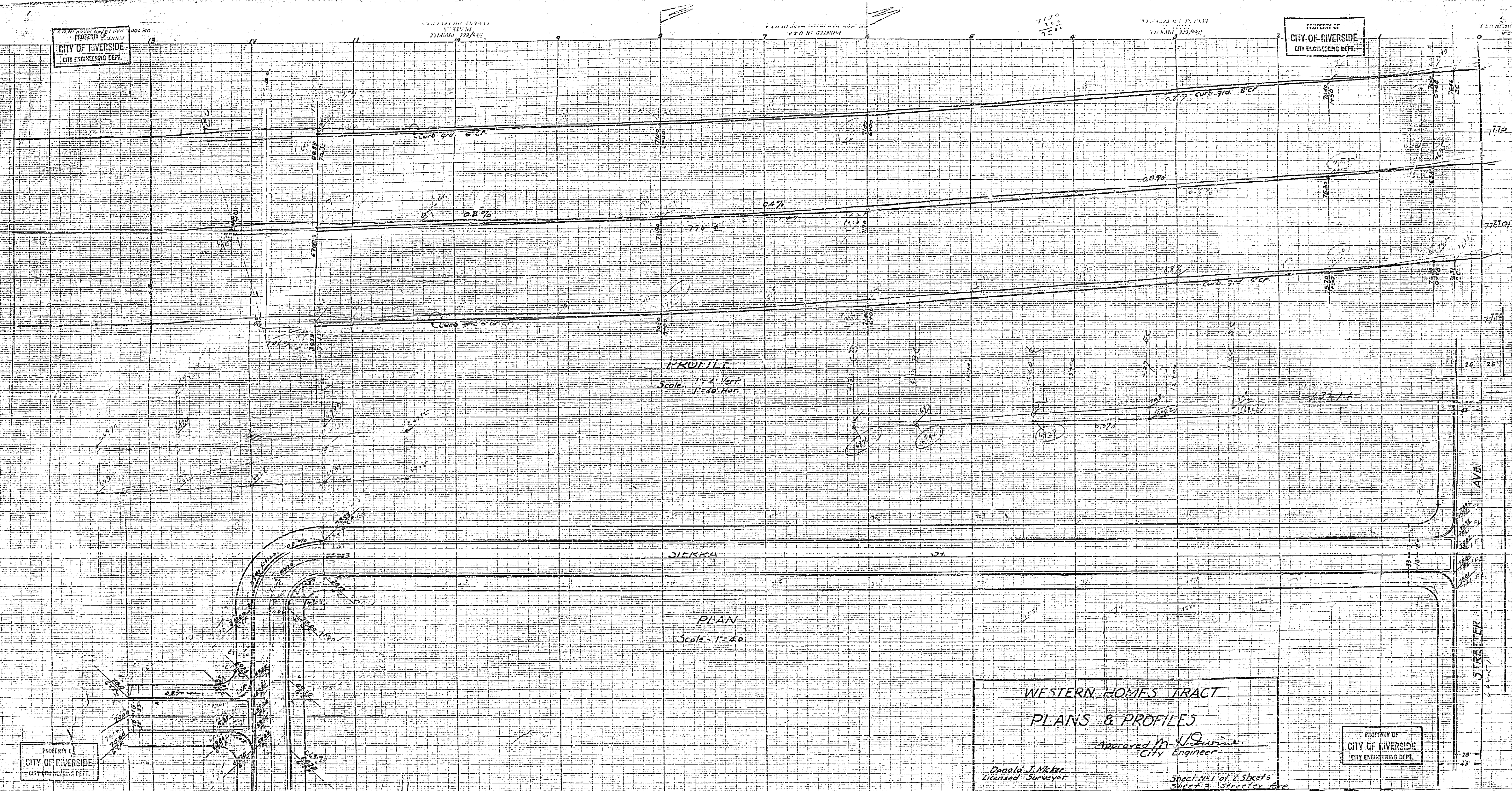


PROPERTY OF
CITY OF RIVERSIDE
CITY ENGINEERING DEPT.

PROPERTY OF
CITY OF RIVERSIDE
CITY ENGINEERING DEPT.



PROFILE
Scale: 1" = 4' Vert
1" = 40' Hor.

PLAN
Scale: 1" = 40'

WESTERN HOMES TRACT
PLANS & PROFILES
Approved *M. J. Durkin*
City Engineer

Donald J. McKee
Licensed Surveyor

PROPERTY OF
CITY OF RIVERSIDE
CITY ENGINEERING DEPT.

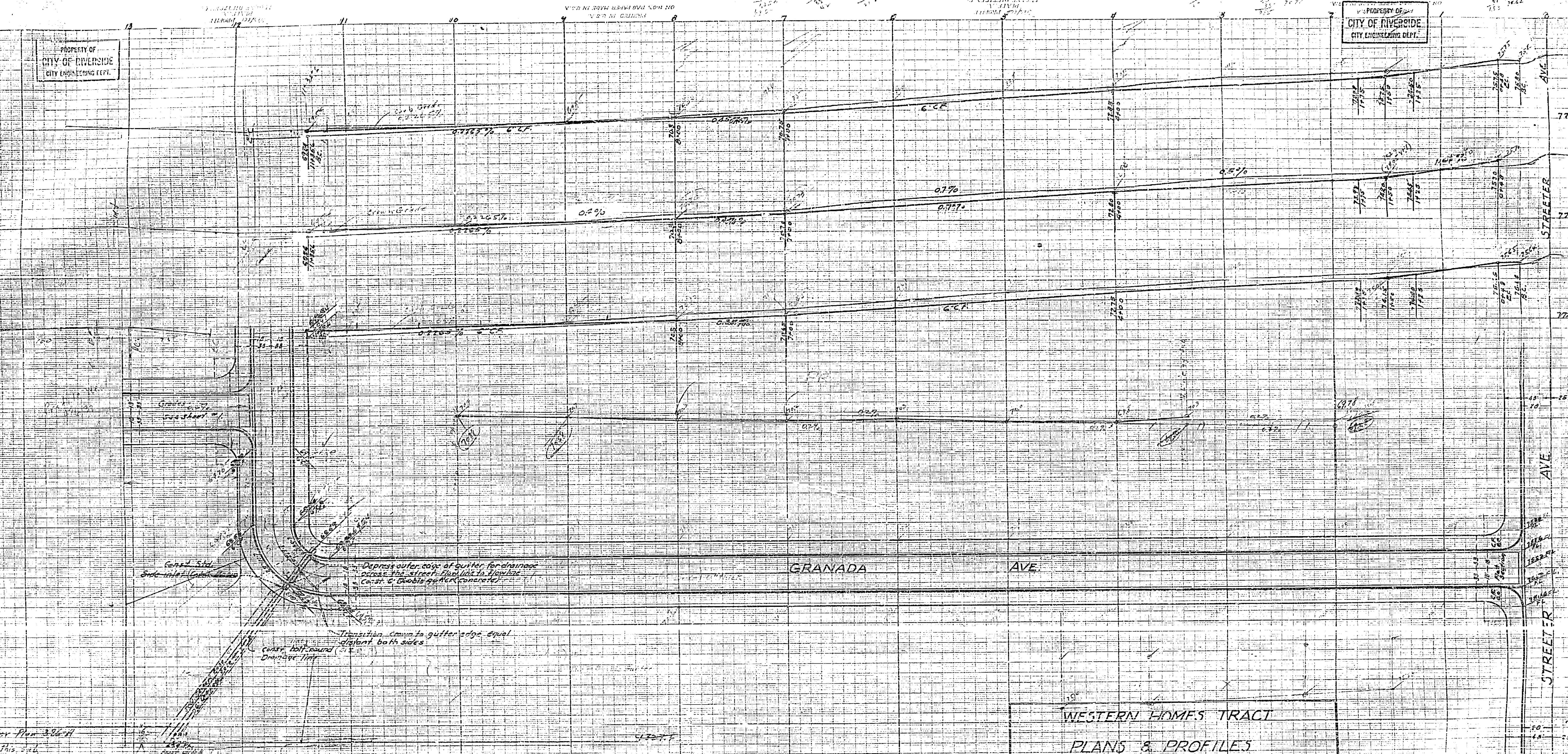
Sheet #21 of 2 Sheets
Sheet 3, Streeter Ave

333

PROPERTY OF
CITY OF RIVERSIDE
CITY ENGINEERING DEPT.

PROPERTY OF
CITY OF RIVERSIDE
CITY ENGINEERING DEPT.

PROPERTY OF
CITY OF RIVERSIDE
CITY ENGINEERING DEPT.



Depress outer edge of gutter for drainage across the street. Flank like to flow back. Const. & Throat of curb concrete.

Transition curve to gutter edge equal center both sides.

Center half round drainage 11'4"

GRANADA AVE

STREET #1
STREET #2

WESTERN HOMES TRACT
PLANS & PROFILES

Approved *M. H. Duane*
City Engineer

Donald J. Mikee
Licensed Surveyor

Sheet No. 2 of 2 Sheets
(Sheet 3 - Street #1 Ave)

333

PROPERTY OF
CITY OF RIVERSIDE
CITY ENGINEERING DEPT.

Refer to Survey Plan 386-H
disc. 31 to this sub.