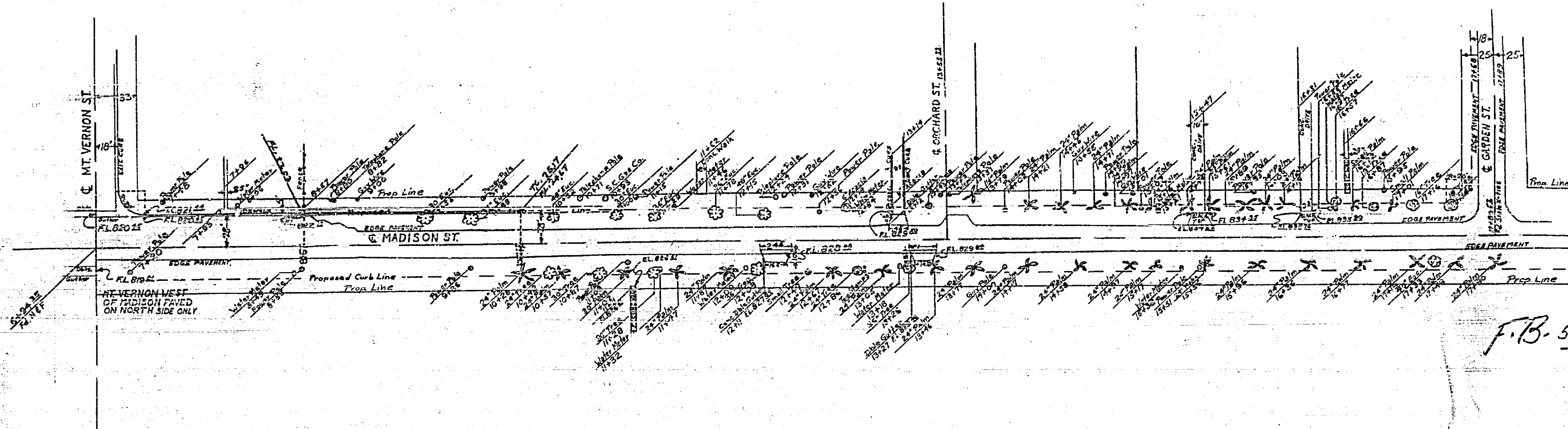


MADISON ST. Between Mt. Vernon St. & Garden St., Oct. 1953

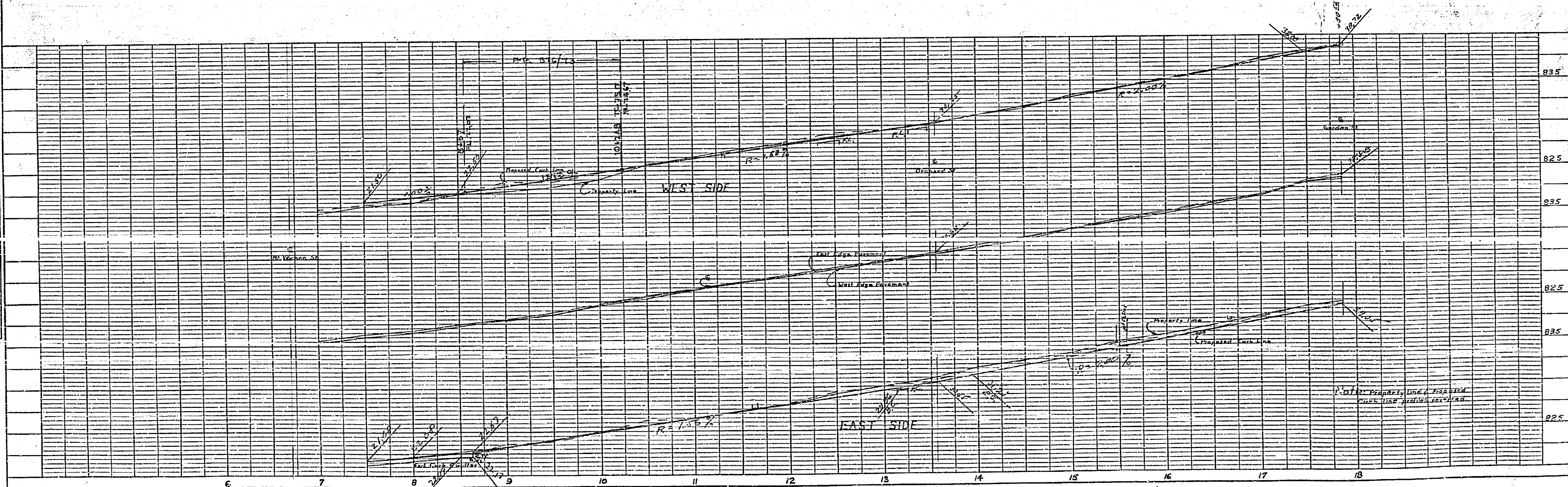
SCALE:  
VERTICAL 1"=5'  
HORIZONTAL 1"=50'

PLAN	DATE
DRAWN	
CHECKED	
NOTE BOOK	
NO. OF WAYS CHECKED	
NO.	



F.B. 54616

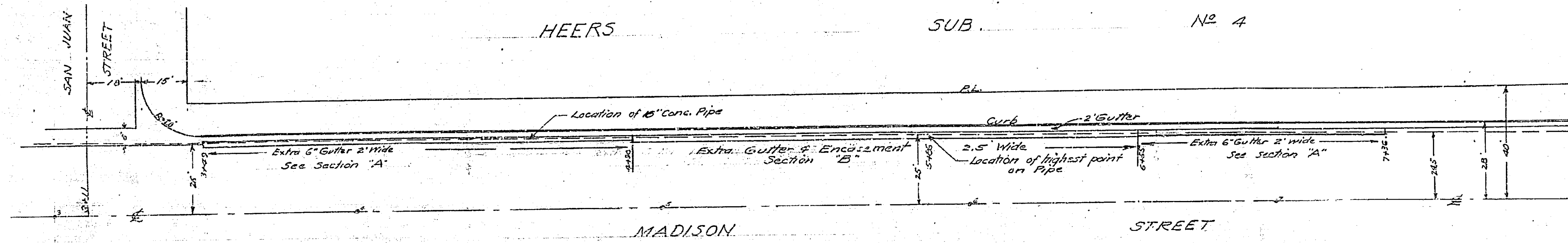
PROFILE	DATE
DRAWN	
CHECKED	
NOTE BOOK	
GRADE CHECKED	
STRUCTURE NOTATION	
NO.	



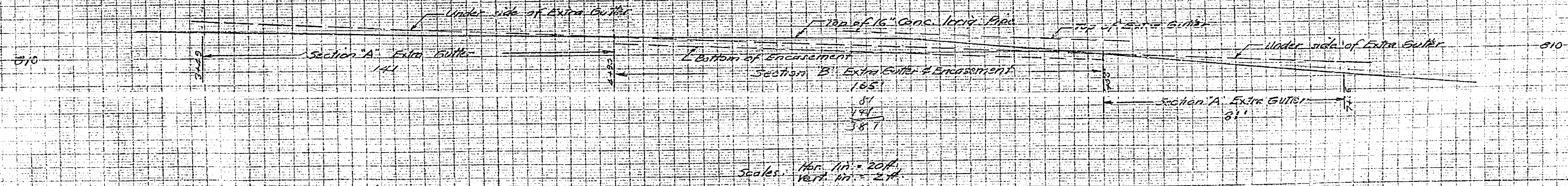
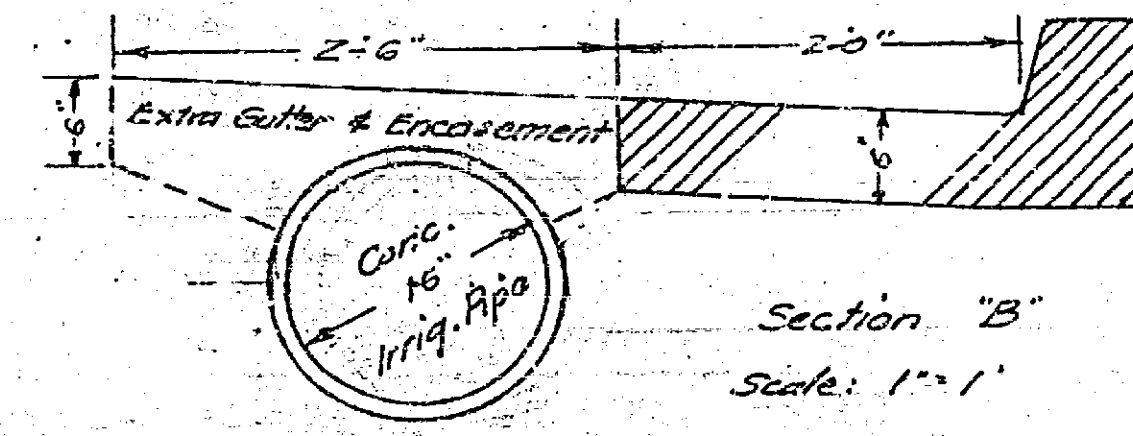
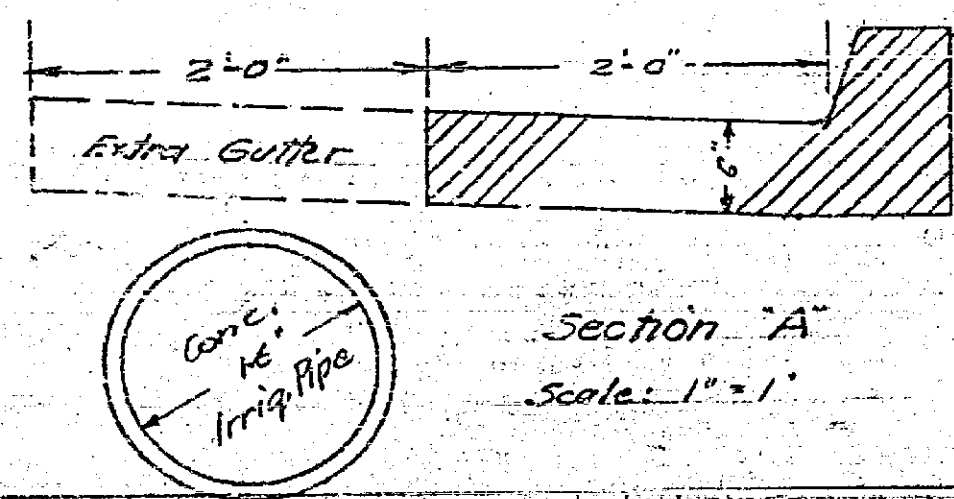
341 B

PLAN AND PROFILE NO. 341-B  
 SHOWING METHOD OF PROTECTION FOR  
 16 INCH CONCRETE IRRIGATION PIPE IN  
 MADISON STREET  
 WEST OF MAGNOLIA AVENUE  
 PIPE LOCATED FROM FIELD NOTES OF RIV. WATER CO.  
 AND ACTUAL INVESTIGATION  
 FOR IMPROVEMENT GRADES SEE APPROVED PROFILES  
 FOR HEERS SUBDIVISION NO. 4

APPROVED M.H. Swine NOV. 30, 1951  
 CITY ENGINEER



Scale of Plan 1 in. = 20 ft.



Scales: Hor. 1/8" = 20 ft.  
 Vert. 1/8" = 2 ft.

341 B