

ASSESSMENT # 377
DIAGRAM

EXHIBITING MISSION STREET SANITARY SEWER DISTRICT

IN THE CITY OF RIVERSIDE ON WHICH WORK HAS BEEN DONE UNDER MY OFFICIAL CONTRACT AS SUPERINTENDENT OF STREETS OF SAID CITY WITH C.O. BRAND DATED MAY 12, 1953

FOR THE CONSTRUCTION OF SANITARY SEWER, MANHOLES, WYE BRANCHES, & HOUSE CONNECTIONS AS IS MORE PARTICULARLY DESCRIBED IN SAID CONTRACT TO WHICH REFERENCE IS HEREBY MADE FOR FURTHER PARTICULARS. SAID DIAGRAM ALSO SHOWS THE RELATIVE LOCATION OF EACH LOT, PORTION OF LOT, PIECE OR PARCEL OF LAND ASSESSED FOR THE WORK DONE NUMBERED IN FIGURES TO CORRESPOND TO THE RED INK NUMBERS IN THE ASSESSMENT

HEREIN FIGURES NEXT TO PROPERTY LINES SHOW LENGTH OF SAID LINES IN FEET. THE MARK (L) MEANS FEET. PROPERTY LINES THAT DIFFER FROM THE RECORDED SUBDIVISIONS ARE SHOWN BY BROKEN LINES. THE DISTRICT BENEFITED IS BOUNDARY BY A HEAVY DASHED LINE.

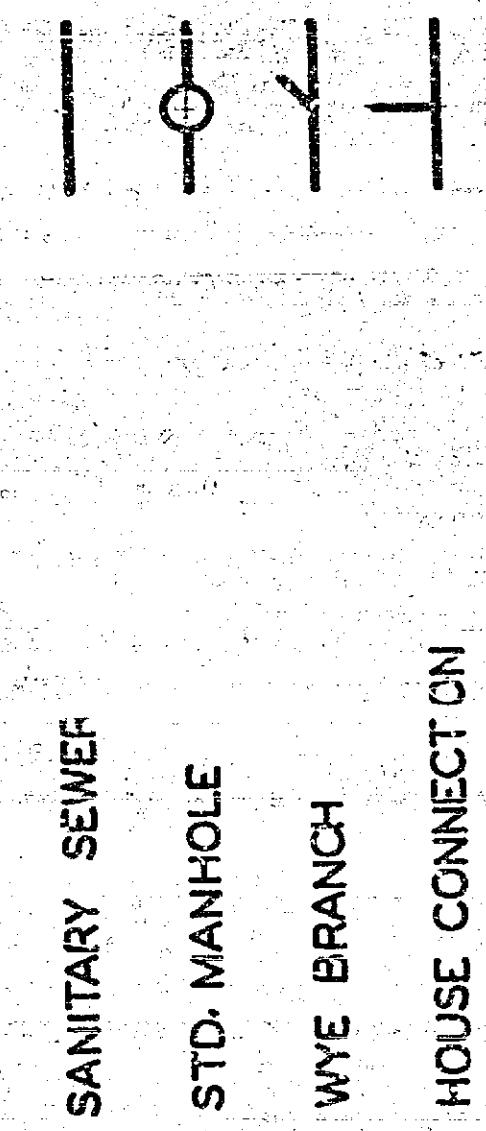
PROPERTY COVERED BY THIS ASSESSMENT IS SHOWN ON THE FOLLOWING RECORDED MAPS:

RESUB DIVISION OF VAN BUREN PARK MB. 8, PG. 26, REC. RIV. CO.

I HEREBY CERTIFY THAT THIS ASSESSMENT DIAGRAM WAS APPROVED BY THE CITY COUNCIL OF THE CITY OF RIVERSIDE AT A MEETING THEREOF HELD ON THE 19 DAY OF

CITY CLERK OF THE CITY OF RIVERSIDE.

HEREIN THE LEGEND OF THE DIFFERENT KINDS OF WORK PERFORMED IS SHOWN AS FOLLOWS:



SANITARY SEWER
STD. MANHOLE
WYE BRANCH
HOUSE CONNECTION

8" VITRIFIED CLAY PIPE SEWER 58008 LIN. FT.
STD. MANHOLES 2
6"x4" WYE BRANCHES 14
4" HOUSE CONNECTIONS 252 LIN. FT.
MODIFYING EXISTING MANHOLE 1

SUPERINTENDENT OF STREETS OF THE CITY OF RIVERSIDE. THE FOLLOWING IS A STATEMENT OF AMOUNTS OF DIFFERENT KINDS OF WORK DONE BY C.O. BRIAND UNDER

CONTRACT DATED MAY 12, 1953 PURSUANT TO RESOLUTION OF INTENTION NO 5597 ADOPTED BY THE CITY COUNCIL OF THE CITY OF RIVERSIDE ON THE 3RD DAY OF FEBRUARY 1953

AT SAID CITY OF RIVERSIDE THIS DAY OF

SUPERINTENDENT OF STREETS OF THE CITY OF RIVERSIDE.

I HEREBY CERTIFY THAT THE ABOVE WORK WAS DONE IN ACCORDANCE WITH LINES AND GRADES FURNISHED BY ME AND THAT THE DIAGRAM OF THE ASSESSMENT DISTRICT FOR THE SAME IS CORRECT.

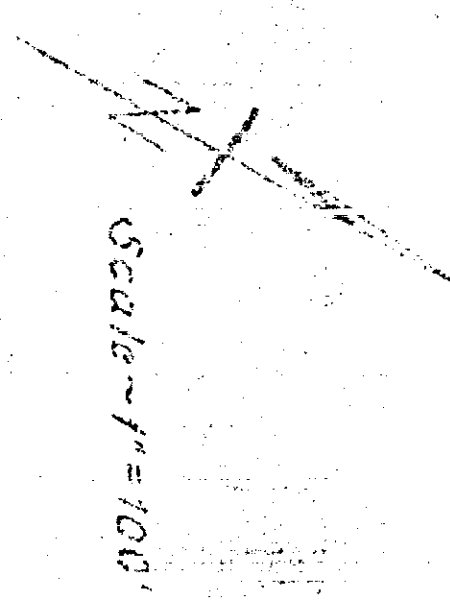
CITY ENGINEER OF THE CITY OF RIVERSIDE.

RECORDED AT 10:01 O'CLOCK A.M. THIS 16TH DAY OF SEPTEMBER 1953

SUPERINTENDENT OF STREETS OF THE CITY OF RIVERSIDE.

342

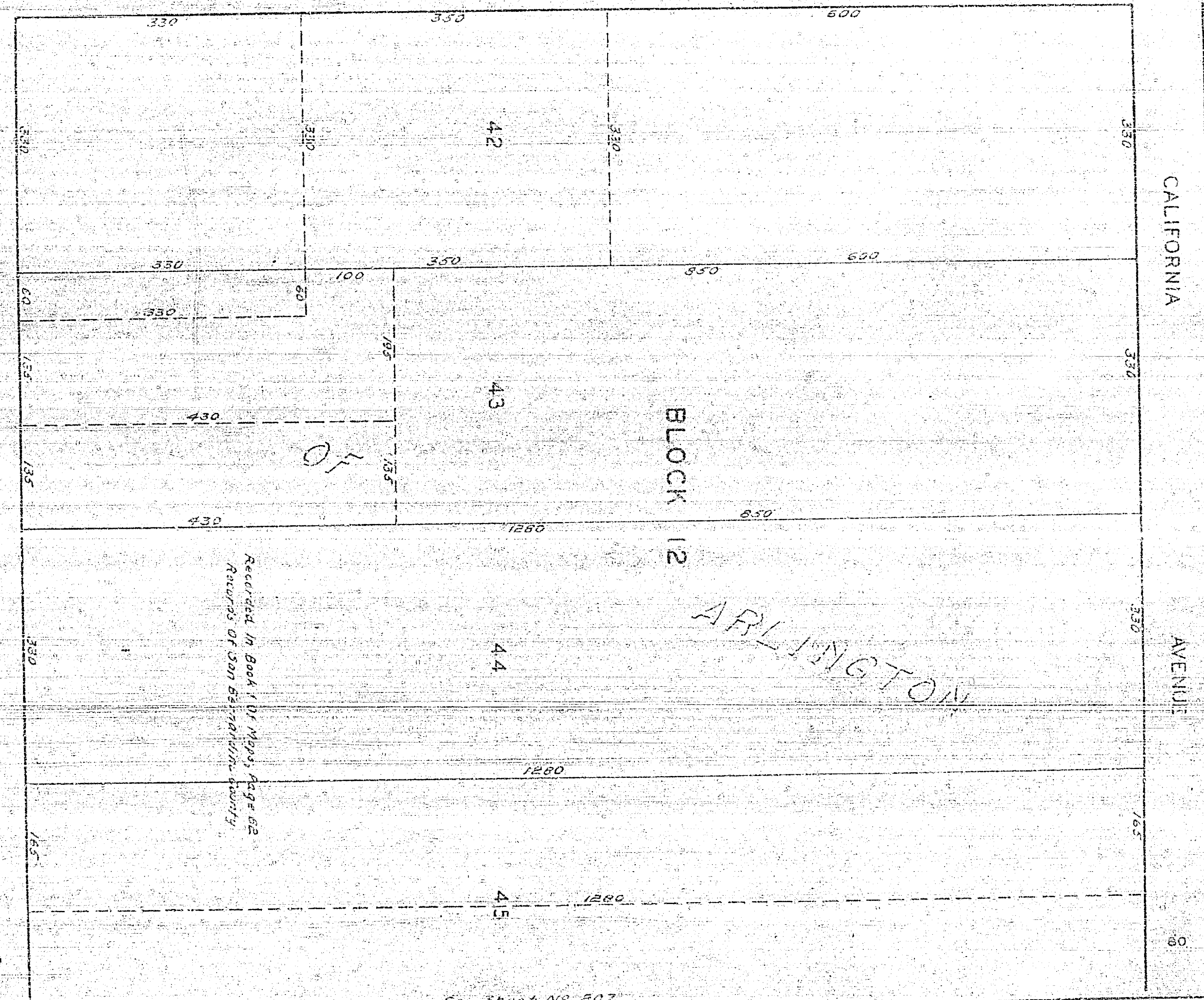
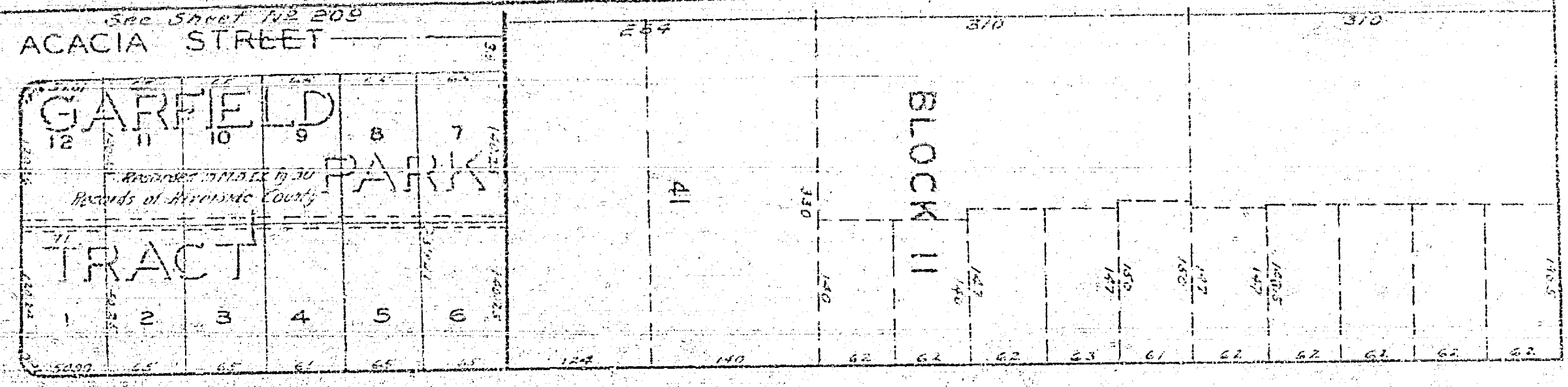
342



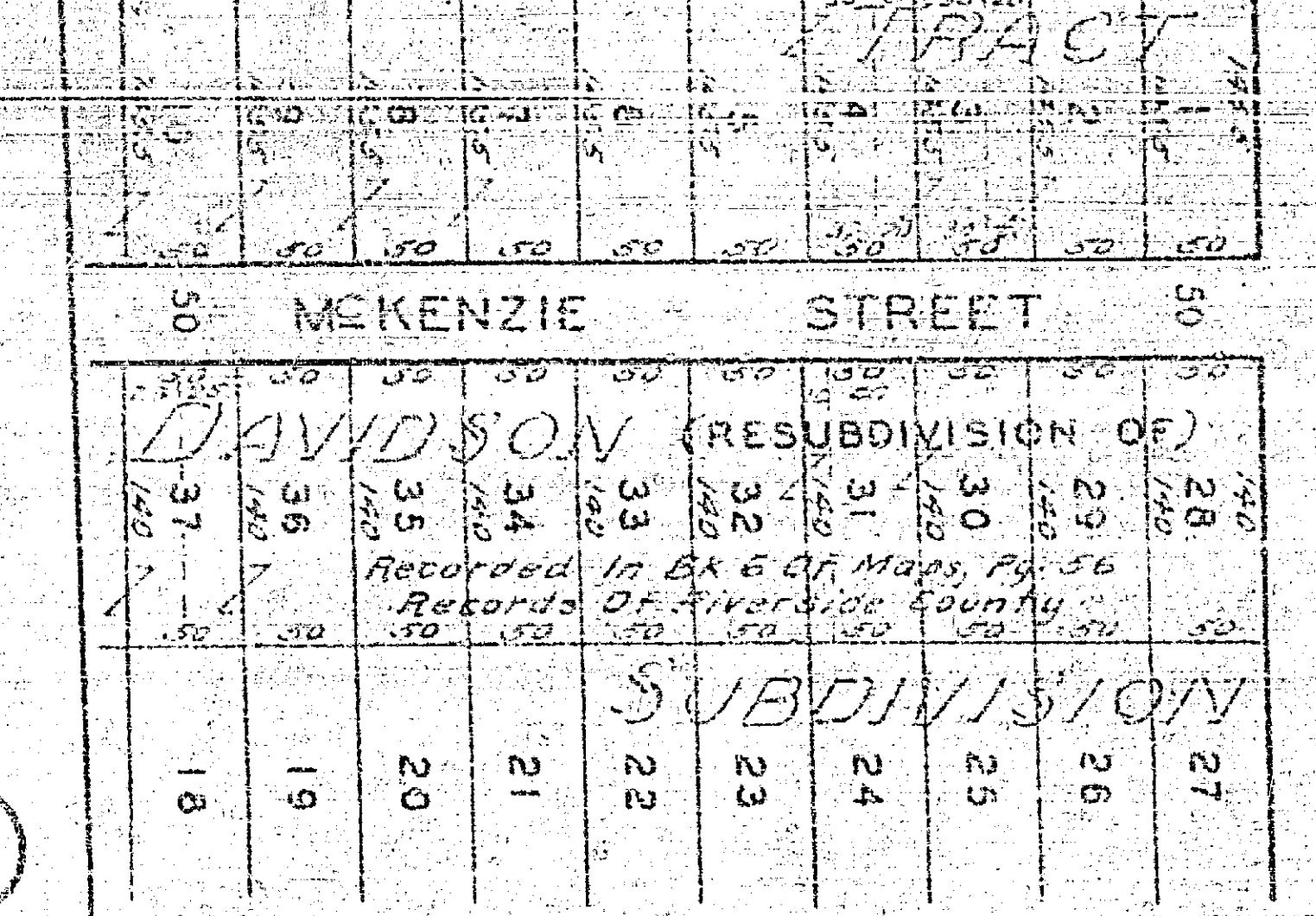
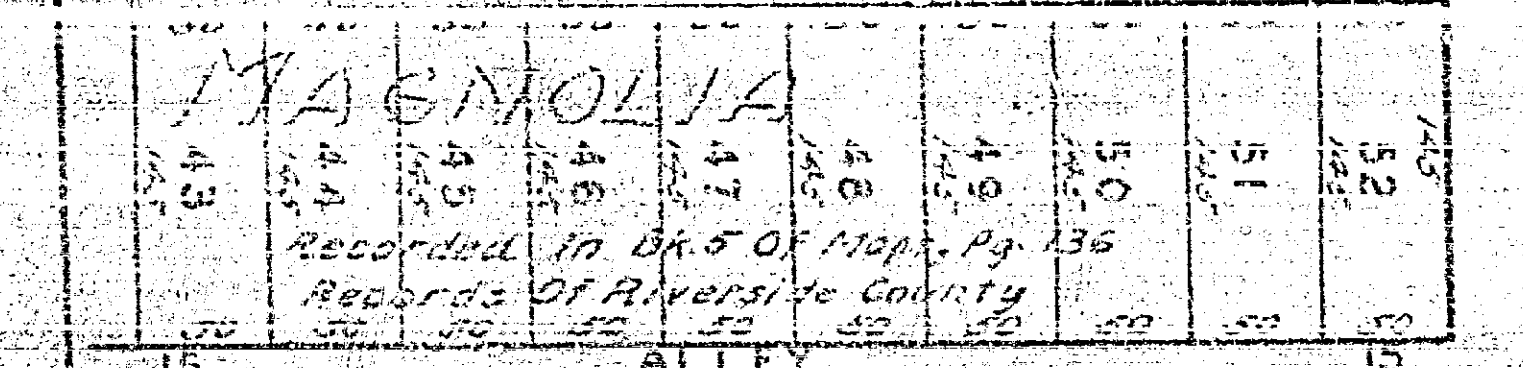
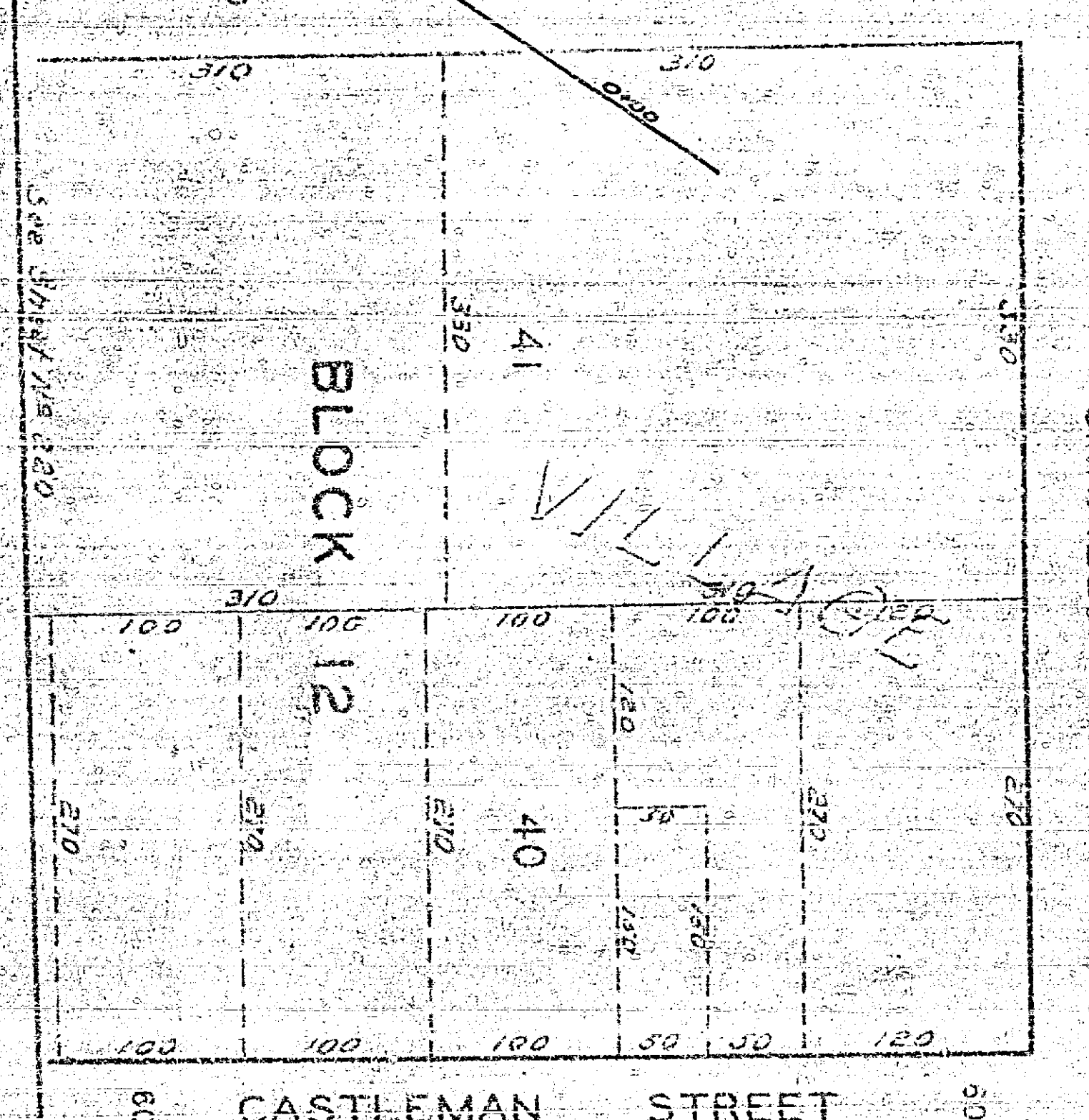
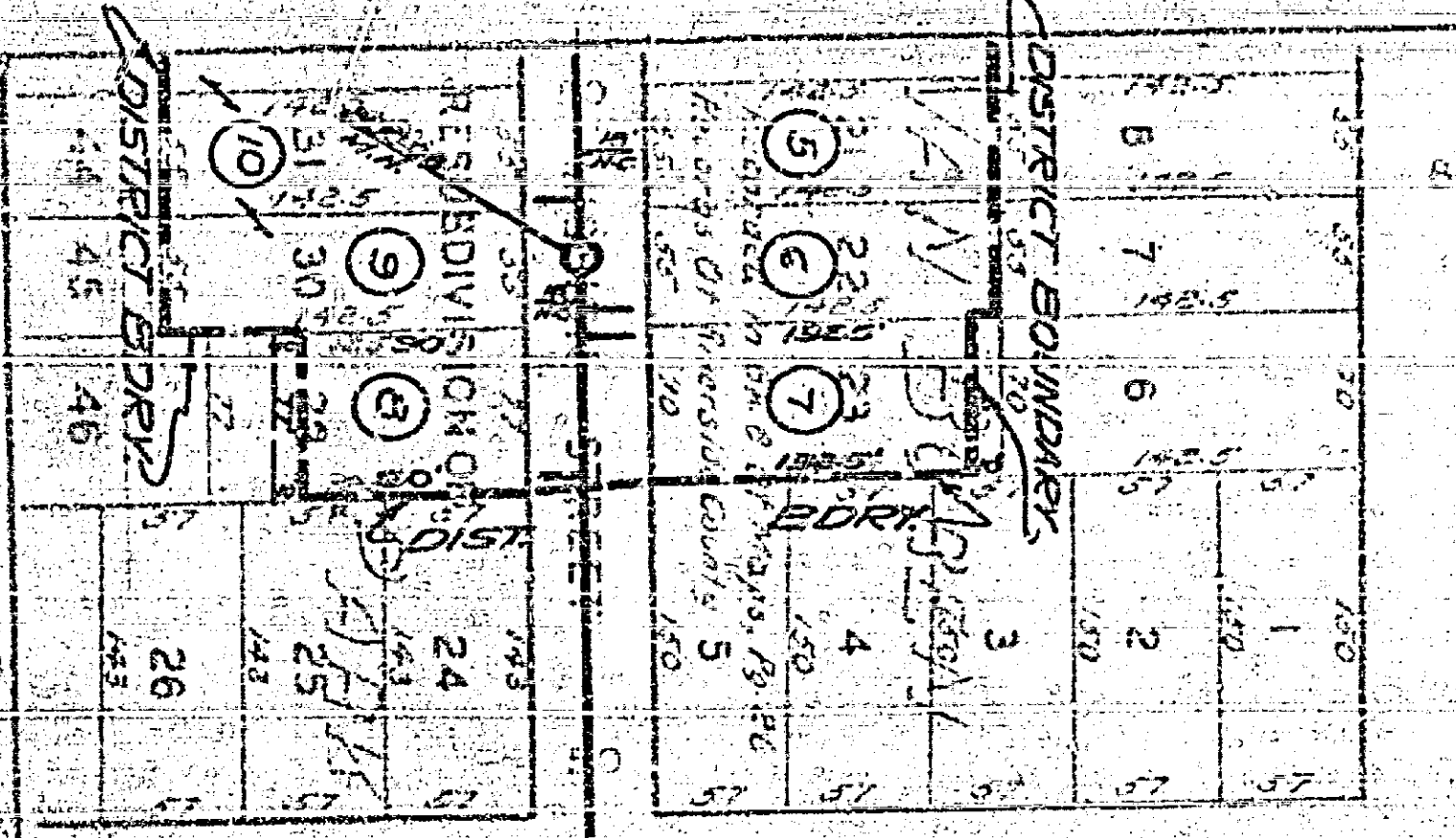
Scale - 1" = 100'

See Sheet No 197

See Sheet No 207



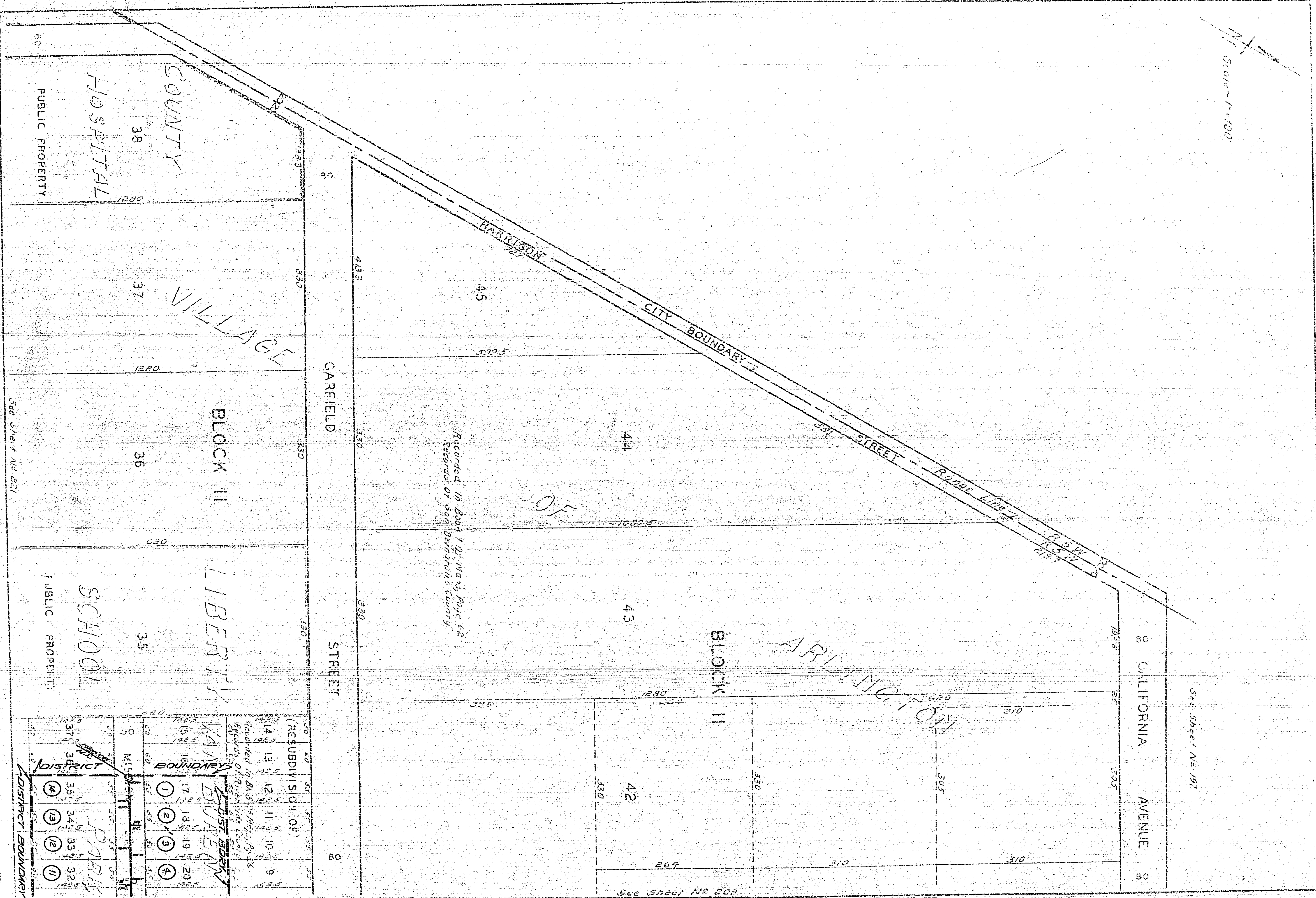
Recorded in Book 1 of Maps, Page 62
Records of San Bernardino County



Scale 1"=100'

See Sheet No. 197

See Sheet No. 203



Recorded in Book 1 of Mary Page 62
Records of San Bernardino County

BLOCK II

BLOCK II

COUNTY

VILLAGE

ARLINGTON

SCHOOL

HOSPITAL

PUBLIC PROPERTY

PUBLIC PROPERTY

LIBERTY

GARFIELD

STREET

CALIFORNIA

AVENUE

HARRISON

CITY BOUNDARY

STREET

Van Buren

BOUNDARY

(RESUBDIVISION OF)

9 MISDIVISION

DISTRICT

PARISH

DISTRICT BOUNDARY

See Sheet No. 201

60

38

37

36

35

45

44

43

42

34 R