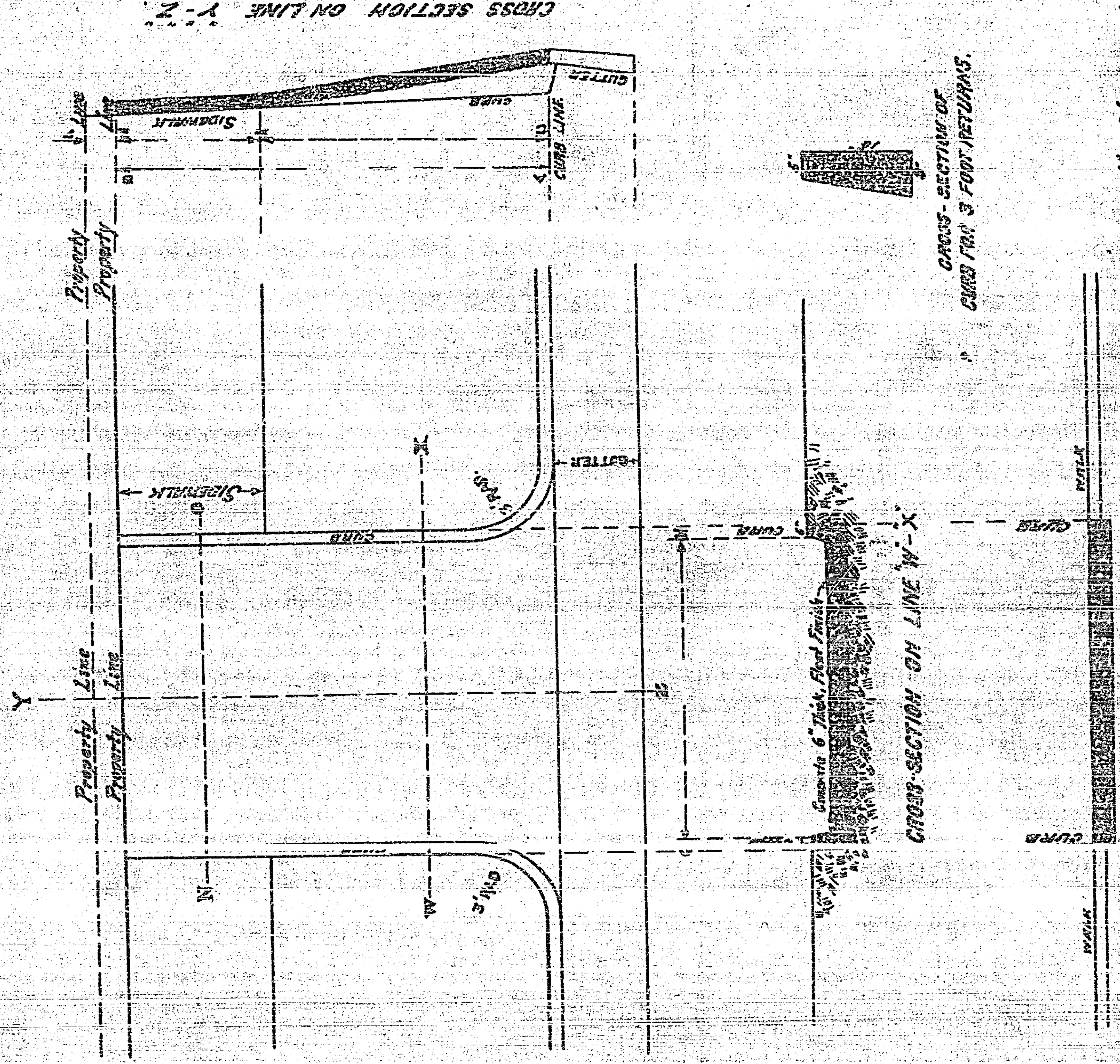


**DIAGRAM SHOWING STANDARD CONSTRUCTION
TO ENTRANCES TO PRIVATE DRIVEWAYS.**

Concrete to be 1 part cement, 3 parts sand, and 5 parts broken
rock, with float finish. 7 sacks of cement shall weigh 95
pounds and contain 1 cubic foot of cement. 4 sacks of
cement are equivalent to 1 barrel of cement. All surfaces
shall be colored with lamp black to match the work constructed.



Adopted by the Mayor and
Common Council of the City of
Riverside, September 14, 1908.
Attest *M. J. [Signature]*
City Clerk

CROSS-SECTION ON LINE W-X

CROSS-SECTION OF CURB FOR 3 FOOT RETURNS

CROSS-SECTION ON LINE Y-Z

See: TRACING IN

348 A 31 3

49

49

348