

DIAGRAM

EXISTING TWELFTH STREET AND SEDGWICK AVENUE IMPROVEMENT DISTRICT

IN THE CITY OF RIVERSIDE ON WHICH WORK HAS BEEN DONE UNDER AN OFFICIAL CONTRACT AS SUPERINTENDENT OF STREETS OF SAID CITY WITH PIPELINE CONSTRUCTION CO. DATED JUNE 13, 1951

FOR THE CONSTRUCTION OF COMBINATION CURBS AND GUTTERS AND DOUBLE GUTTERS AND CURBS

AS IS MORE PARTICULARLY DESCRIBED IN SAID CONTRACT TO WHICH REFERENCE IS HEREBY MADE FOR FURTHER PARTICULARS SAID DIAGRAM ALSO SHOWS THE RELATIVE LOCATION OF EACH LOT, PORTION OF LOT, PIECE OR PARCEL OF LAND ASSESSED FOR THE WORK DONE NUMBERED IN CIRCLES TO CORRESPOND TO THE MEN'S NUMBERS IN THE ASSESSMENT MAPS.

THE MARK (1) MEANS FEET TO PROPERTY LINES SHOW LENGTH OF SAID LINES IN FEET. THE MARK (2) MEANS FEET TO PROPERTY LINES THAT DIFFER FROM THE RECORDED SUBDIVISIONS ARE SHOWN BY BROKEN LINES. THE DISTRICT BENEFITED IS INDICATED BY A HEAVY DASHED LINE.

PROPERTY COVERED BY THIS ASSESSMENT IS SHOWN ON THE FOLLOWING RECORDED MAPS:

- GARFIELD PLACE M.B. 6, PG. 27, REC. S.B. CO.
- JARVIS SUBDIVISION M.B. 5, PG. 44, REC. S.B. CO.
- CASTLEMAN'S ADDITION M.B. 3, PG. 19, REC. S.B. CO.

I HEREBY CERTIFY THAT THIS ASSESSMENT DIAGRAM WAS APPROVED BY THE CITY COUNCIL OF THE CITY OF RIVERSIDE AT A MEETING THEREOF HELD ON THE DAY OF 1951.

CITY CLERK OF THE CITY OF RIVERSIDE

HEREIN THE LEGEND OF THE DIFFERENT KINDS OF WORK PERFORMED IS SHOWN AS FOLLOWS:

- STD. COMBINATION CURB AND GUTTER
- STD. DOUBLE GUTTER
- STD. CURB
- 10" CONCRETE PIPE TO BE REMOVED

SUPERINTENDENT OF STREETS OF THE CITY OF RIVERSIDE
 THE FOLLOWING IS A STATEMENT OF AMOUNTS OF DIFFERENT KINDS OF WORK DONE BY PIPELINE CONSTRUCTION CO. UNDER CONTRACT DATED JUNE 13, 1951 PURSUANT TO RESOLUTION OF INTENTION NO. 5023 ADOPTED BY THE CITY COUNCIL OF THE CITY OF RIVERSIDE ON THE 13 DAY OF MARCH 1951:

STD. COMBINATION CURB AND GUTTER	2248.5	LIN. FT.
STD. DOUBLE GUTTERS	545.4	SQ. FT.
STD. CURB	27.7	LIN. FT.
10" CONCRETE PIPE TO BE REMOVED	347.5	LIN. FT.

AT SAID CITY OF RIVERSIDE THIS DAY OF

SUPERINTENDENT OF STREETS OF THE CITY OF RIVERSIDE

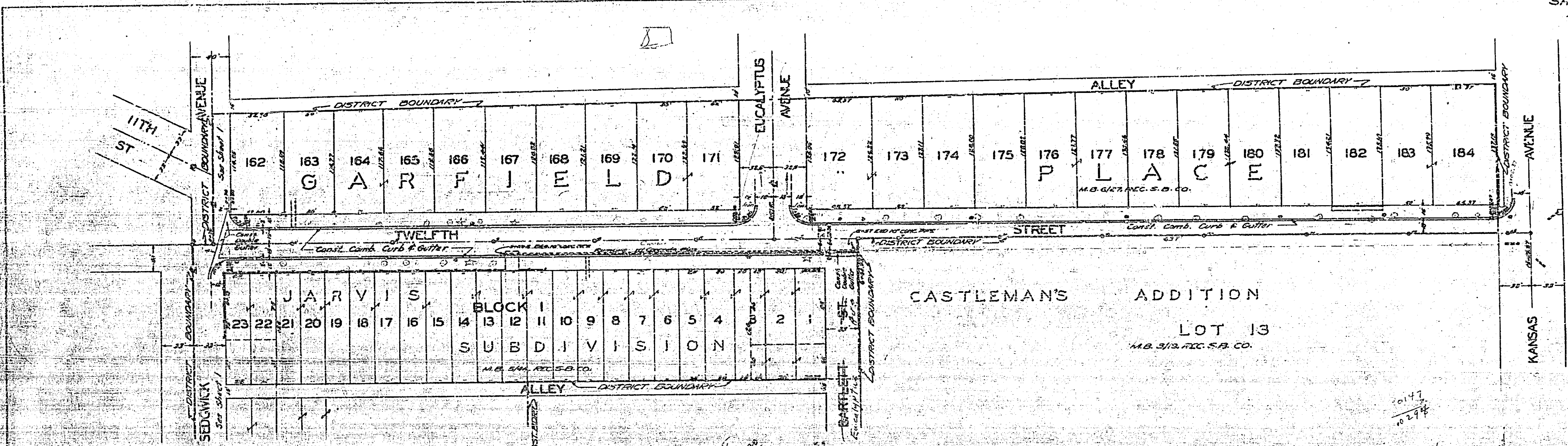
I HEREBY CERTIFY THAT THE ABOVE WORK WAS DONE IN ACCORDANCE WITH LINES AND GRADES FURNISHED BY ME AND THAT THE DIAGRAM OF THE ASSESSMENT DISTRICT FOR THE SAME IS CORRECT.

CITY ENGINEER OF THE CITY OF RIVERSIDE

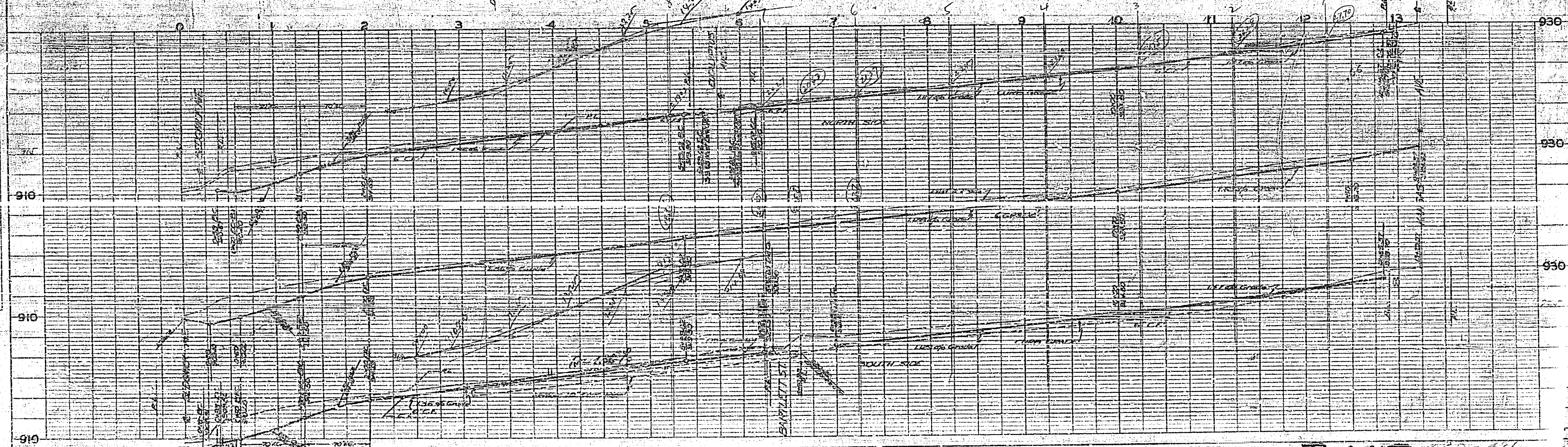
RECORDED AT OCEANOGRAPHY

SUPERINTENDENT OF STREETS OF THE CITY OF RIVERSIDE

352



SCALE: 1" = 20'



PLAN

DATE	
BY	
CHECKED	
APPROVED	

PROFILE

DATE	
BY	
CHECKED	
APPROVED	

352 120-411