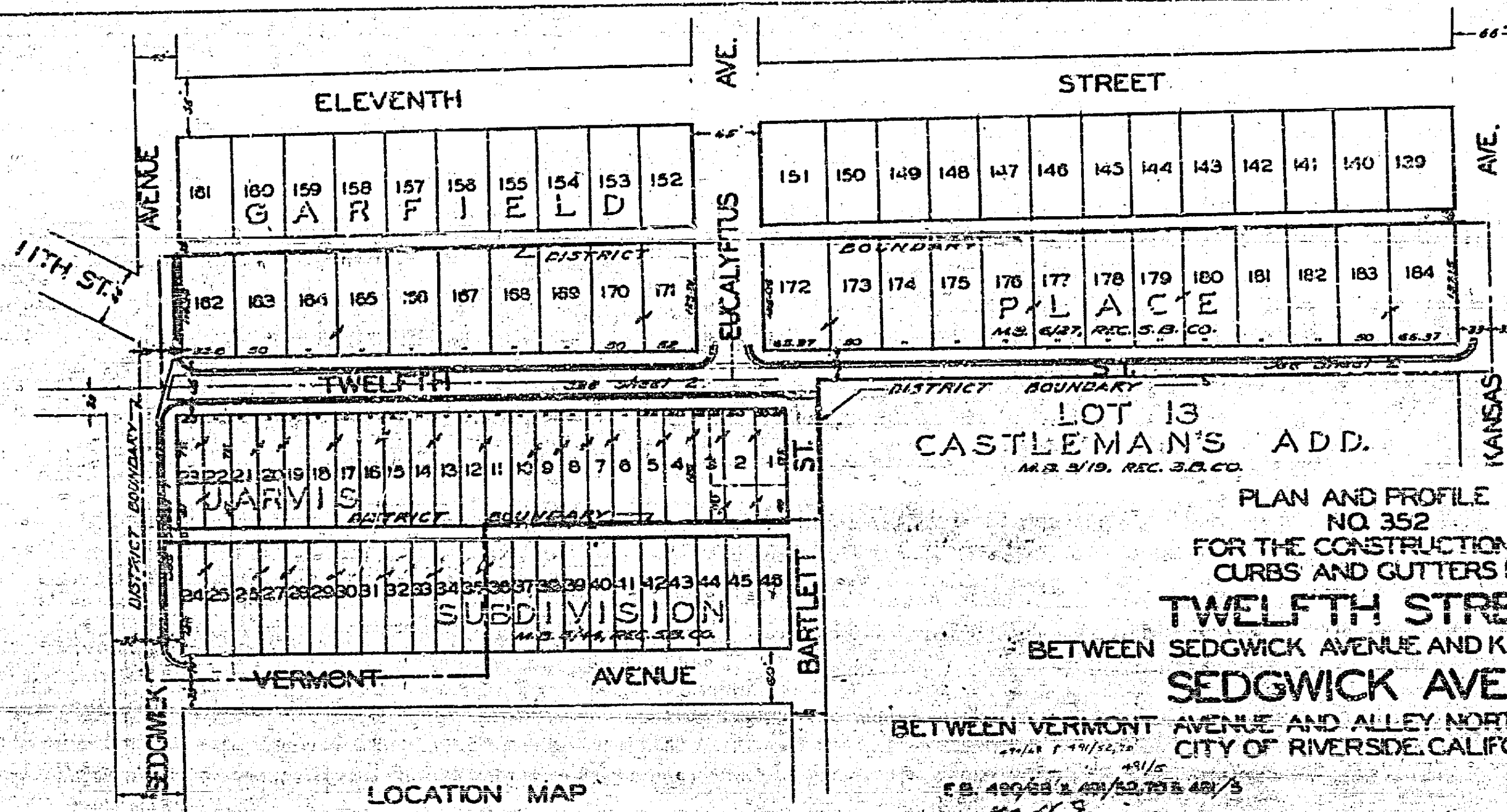
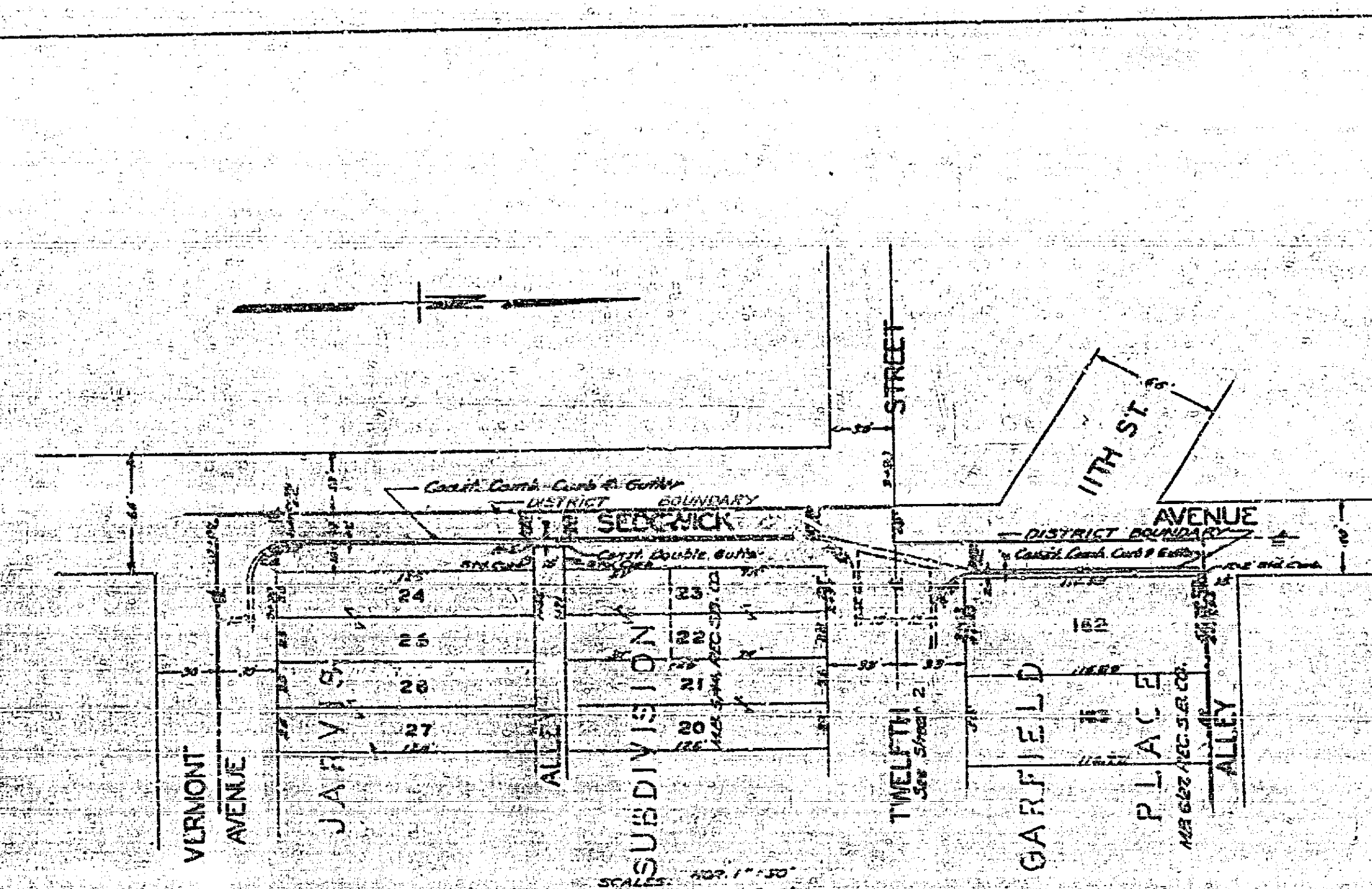


DATE	APR 19 1930
BY	M. J. JONES
CHECKED	
APPROVED	
REVISIONS	

DATE	APR 19 1930
BY	M. J. JONES
CHECKED	
APPROVED	
REVISIONS	



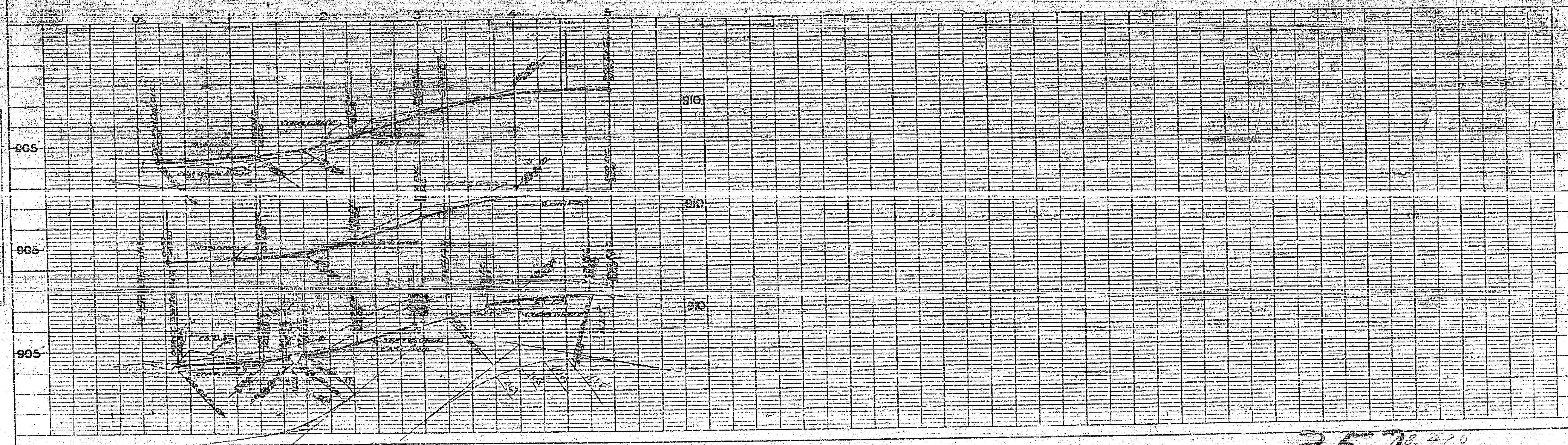
LOT 13
CASTLEMAN'S ADD.
MAR. 21/19. REC. 3.0. CO.

PLAN AND PROFILE
NO. 352
FOR THE CONSTRUCTION OF
CURBS AND GUTTERS IN
TWELFTH STREET
BETWEEN SEDGWICK AVENUE AND KANSAS AVENUE
SEDGWICK AVENUE
BETWEEN VERMONT AVENUE AND ALLEY NORTH OF ELEVENTH STREET
CITY OF RIVERSIDE, CALIFORNIA

APPROVED: M. J. JONES
CITY ENGINEER

SCALES AS SHOWN

THESE PLANS APPROVED AND ADOPTED
BY THE BOARD AND COUNCIL OF THE
CITY OF RIVERSIDE STATE OF CALIFORNIA
ON THIS _____ DAY OF _____ 1930
CITY CLERK



352 78.470

352

