

PROPERTY OF  
CITY OF RIVERSIDE  
CITY ENGINEERING DEPT.

PROPERTY OF  
CITY OF RIVERSIDE  
CITY ENGINEERING DEPT.

N-359-A

SEWER PLAN AND PROFILE  
OF  
RINCON AVENUE AND BONNIE BRAE STREET  
EAST OF ARROYO DRIVE  
IN THE  
VICTORIA PARK ADDITION  
TO THE CITY OF RIVERSIDE

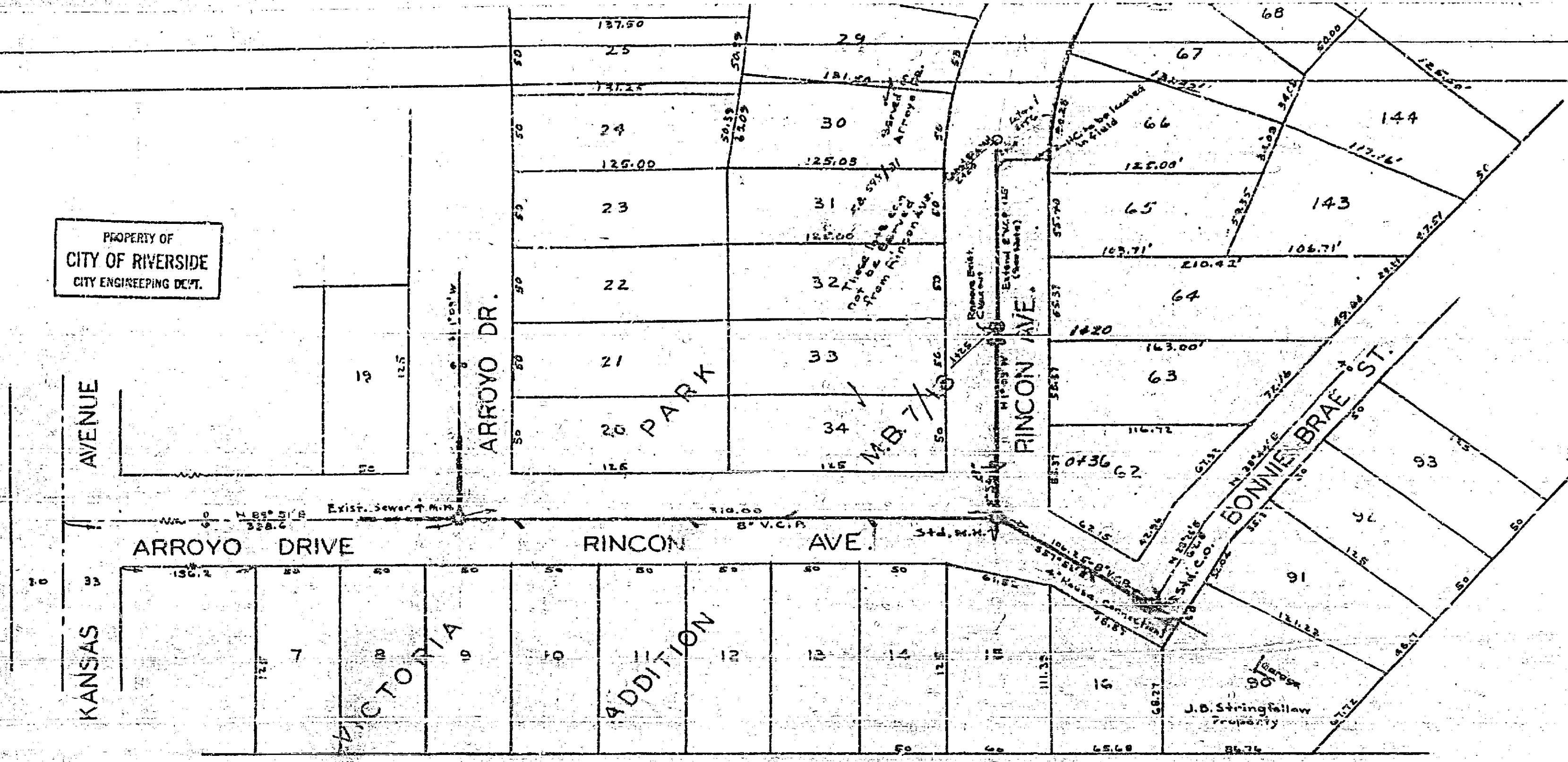
- BY -  
ALBERT A. WEBB ASSOCIATES  
CIVIL ENGINEERS JULY 1953

PLAN

DATE	
BY	
SCALE	
NOTES	
NO. 1714	

PROFILE

DATE	
BY	
SCALE	
NOTES	
NO. 1716	

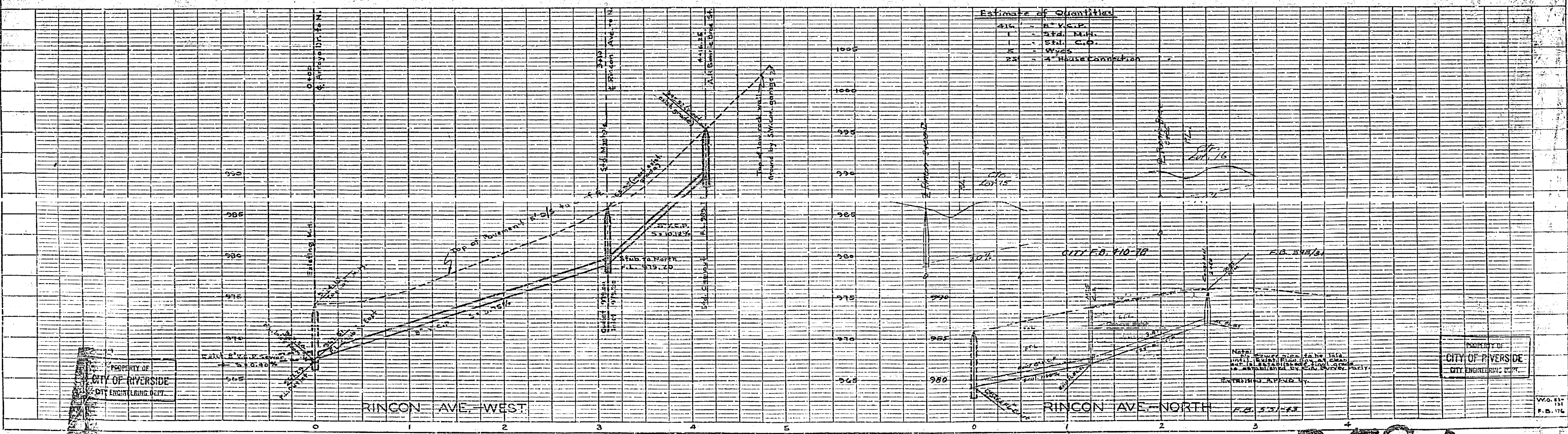


Bench Mark - Lead # Sp. N.W. Curb return Rincon Ave  
# Arroyo Drive - Elev. = 973.72

Approved this 21 day of August 1953  
M. H. Irvine  
City Engineer - City of Riverside

Estimate of Quantities

416	- 8" V.C.P.
1	- 24" Man.
1	- 24" C.P.
2	- Wyes
25	- 4" House Connections



PROPERTY OF  
CITY OF RIVERSIDE  
CITY ENGINEERING DEPT.

PROPERTY OF  
CITY OF RIVERSIDE  
CITY ENGINEERING DEPT.

359 A