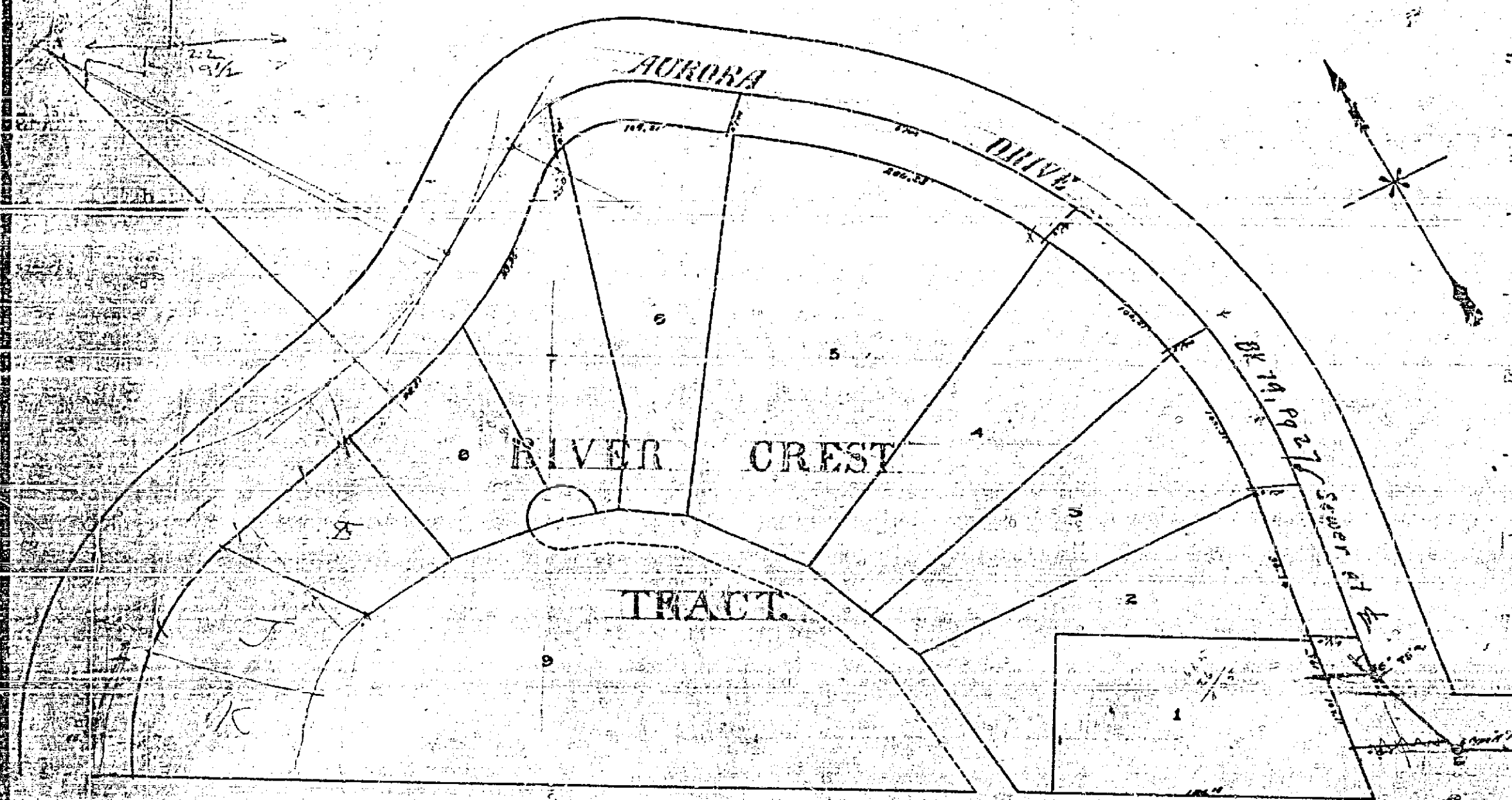
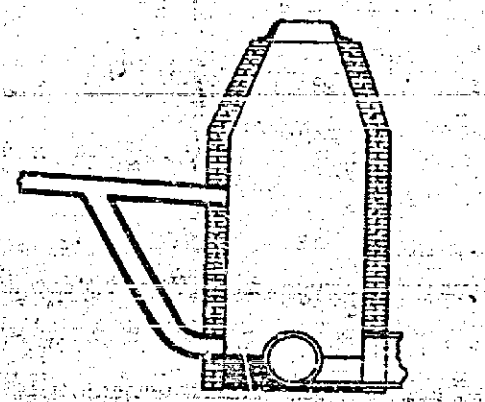


See sheets 19 & 20 for details



MAP OF PROPOSED
4TH ST SEWER
 FROM LOCUST ST WESTERLY.
 SCALE OF MAP, 1 INCH = 50 FEET



ESTIMATE of MATERIAL
 6" Vitrified Pipe 1992 ft.
 4" Vitrified Pipe 210 ft.
 4"x6" Vitrified Ys 54
 Type "A" Manholes 3
 Type "A" M.M. with drop 1
 drop connection 1

Adopted by the Mayor and
 Common Council of the City of
 Riverside, October 14, 1937.
 Attest: *[Signature]*
 City Clerk

