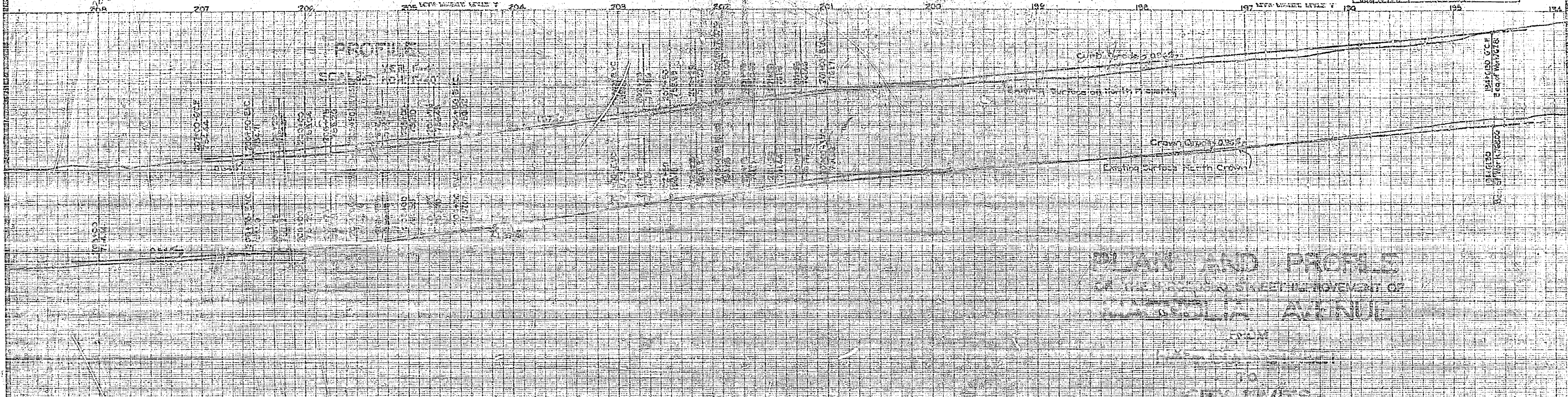


| | | | |
|----------------------------------|---------|---------------|--------------|
| Magnolia Avenue from City Limits | | | |
| Drawing Number | Sheet | Total Sheets | Scale |
| 212 | 3 | 3 | 1/2" = 1'-0" |
| Drawn | Checked | Approved | |
| Arthur R. Kelley | | July 16, 1941 | |

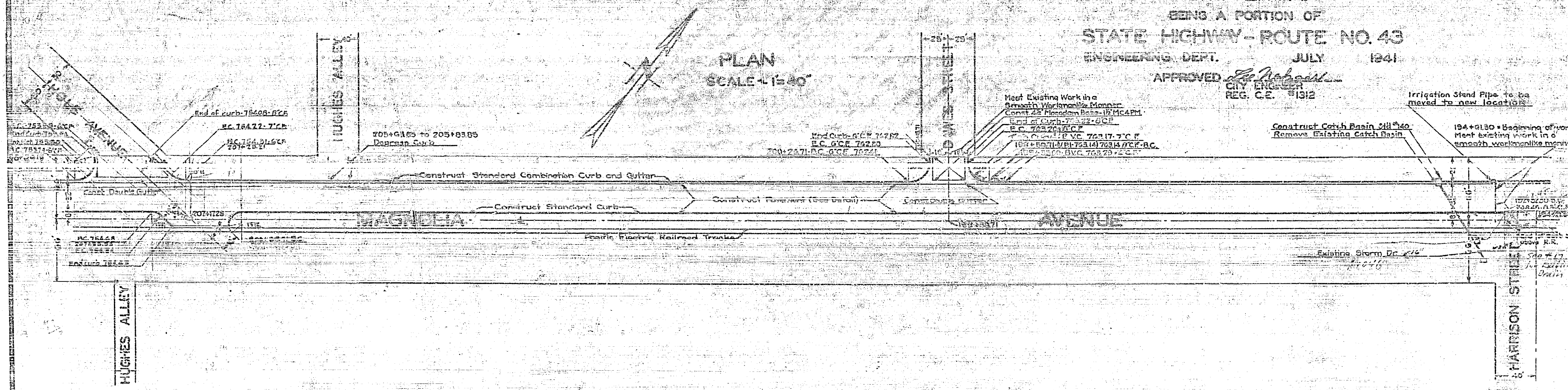


PLAN AND PROFILE
MAGNOLIA AVENUE

CITY LIMITS
 BEING A PORTION OF
STATE HIGHWAY - ROUTE NO. 43
 ENGINEERING DEPT. JULY 1941

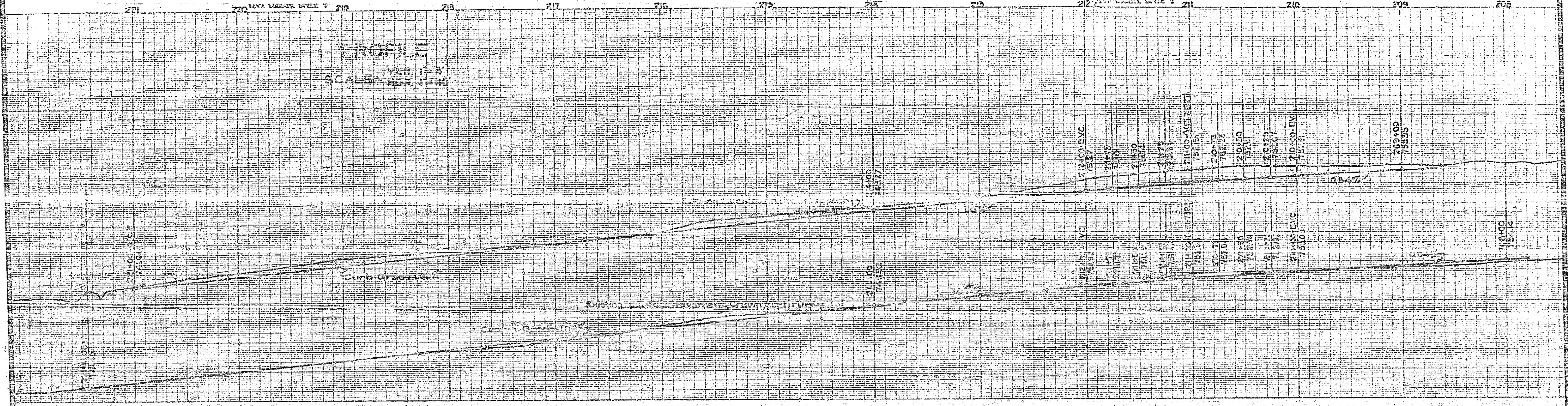
APPROVED *W. H. ...*
 CITY ENGINEER
 REG. C.E. #1312

PLAN
 SCALE - 1" = 40'

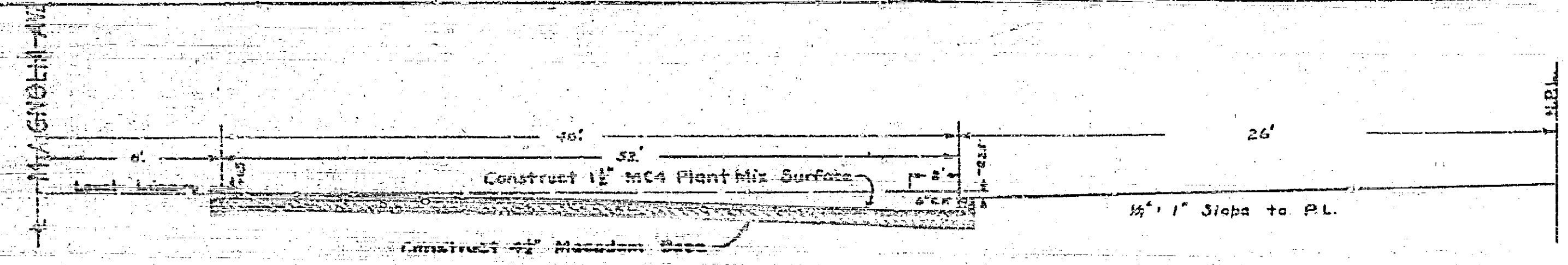
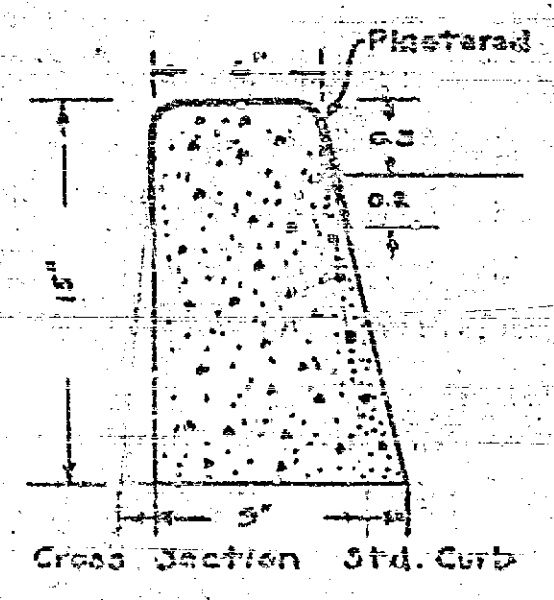
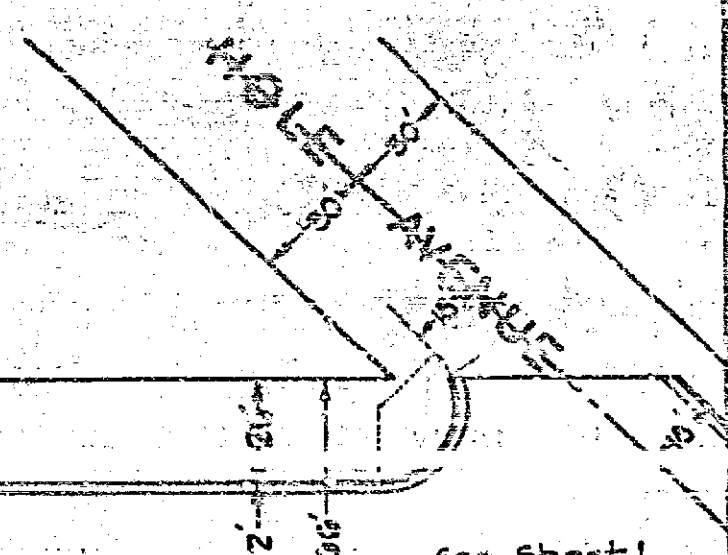
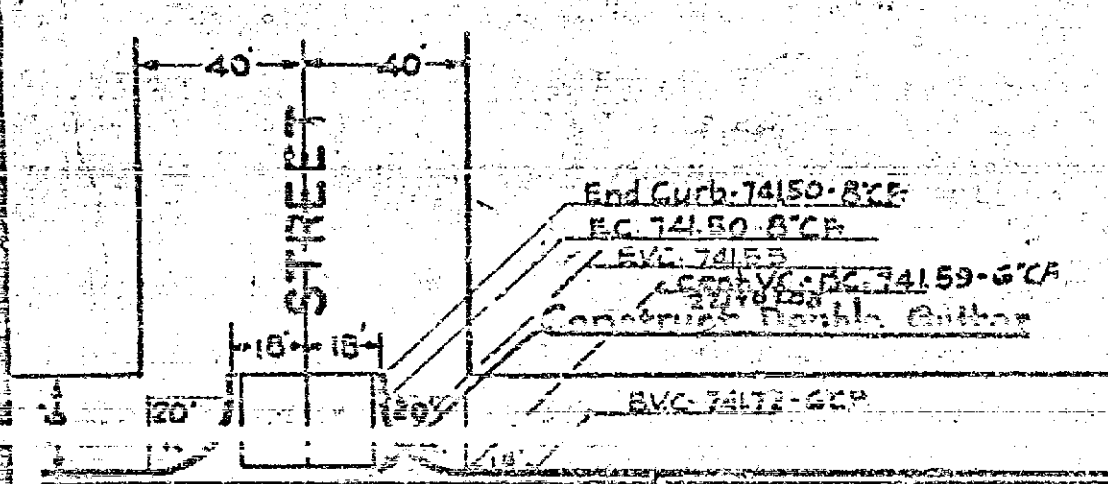


363

| Drawing Number | Sheet Number | Total Sheets | Field Notes |
|-----------------|--------------|--------------|-------------|
| 367 | 2 | 3 | 252, 34, 36 |
| Drawn by | Checked | Approved | |
| Arthur R. Kline | | | |



PLAN
SCALE = 1" = 40'

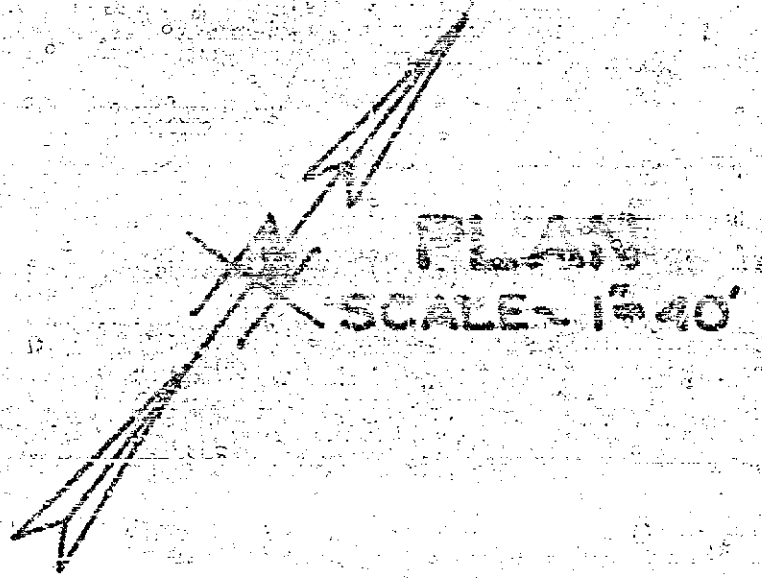
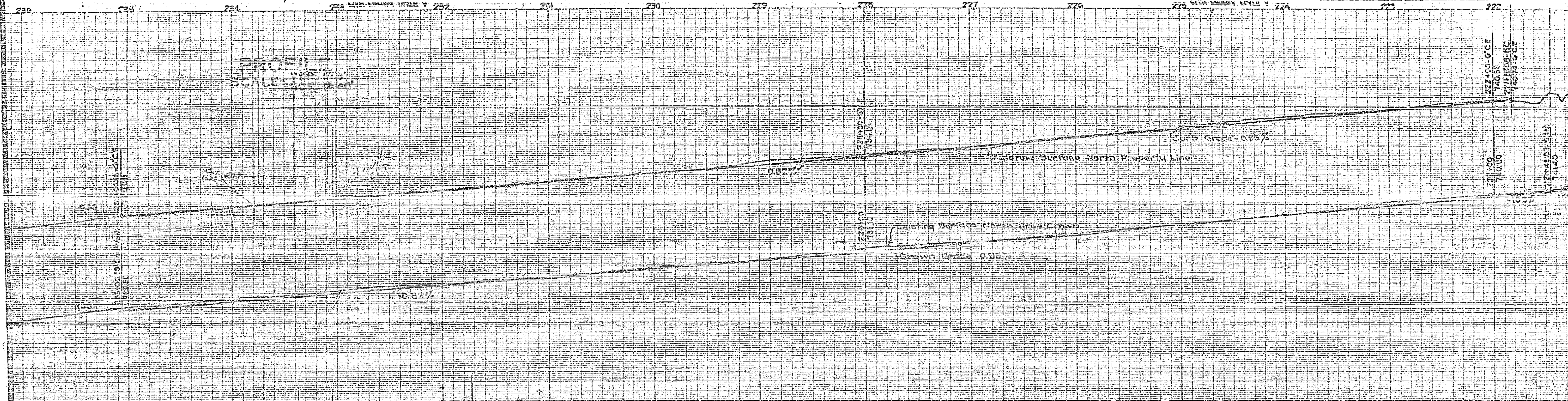


CROSS-SECTION NEW PAVEMENT
Scale: 1" = 4'
To be used where all of Existing Pavement is Removed.

363

HUGHES ALLEY

| | | | |
|---|---------|----------|-----------|
| Magholla Ave Harrison St to City Limits | Sheet | Total | Pic |
| Number | 5 | 3 | 237,34,36 |
| Drawn | Checked | Approved | |
| July 10, 1941 | | | |



Curb Curve Data
 $R = 1000.00'$
 $\Delta = 64.450^\circ$
 $L = 132.57'$

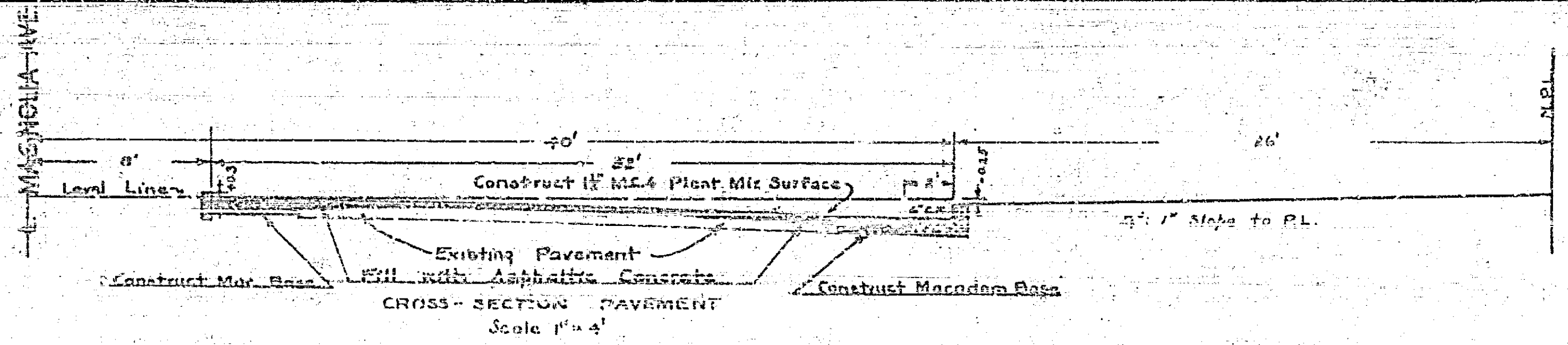
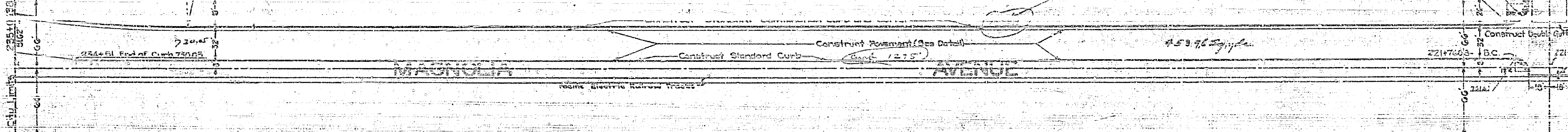
233+06.38 End of Project Meet Existing Work in a Smooth Workmanlike Manner

233+54.58 B.C. 1000' R.

234+51 End of Curve 720' R.

(Existing) E.W.C. 2414' R.
 End of Curve 2414' R.
 $R = 2414'$
 $\Delta = 127.5^\circ$
 $L = 1275'$
 B.V.C. on Curve 2414' R.
 $\Delta = 127.5^\circ$

Meet Existing road on south side of a point 180' west of City Limits



To be used where Existing Pavement Remains

33