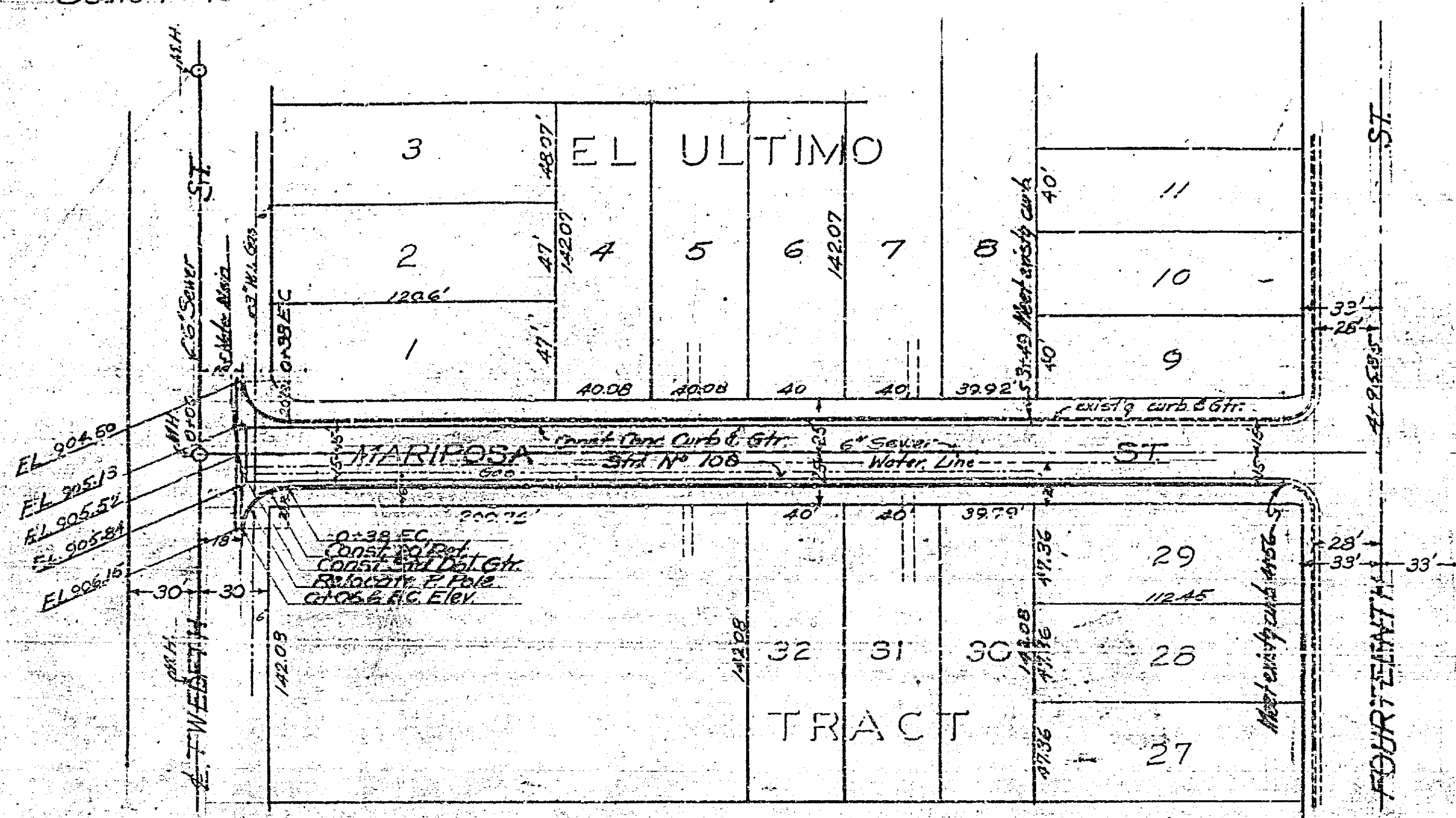
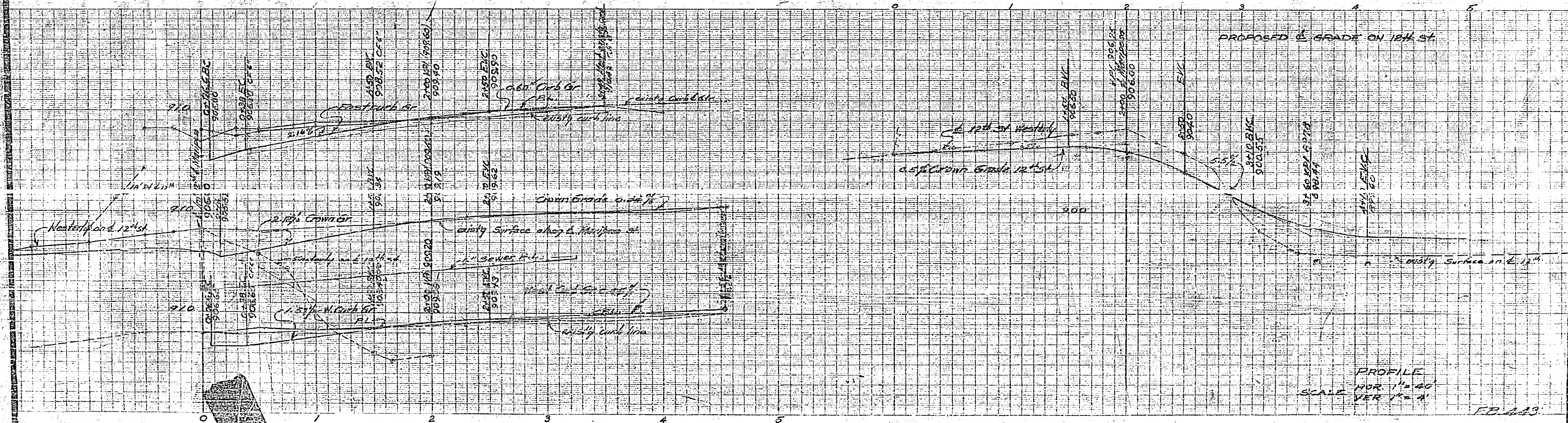


Scale 1"=40'



PLAN AND PROFILE
 NO 365
 FOR THE IMPROVEMENT OF
 MARIPOSA STREET
 BETWEEN TWELFTH ST & FOURTEENTH ST.
 RIVERSIDE, CALIFORNIA

Approved M.H. Irvine
 M.H. IRVINE REG. C.E. N° 3011.
 CITY ENGINEER.



PROFILE
 SCALE HOR 1"=40'
 VER 1"=4'

365