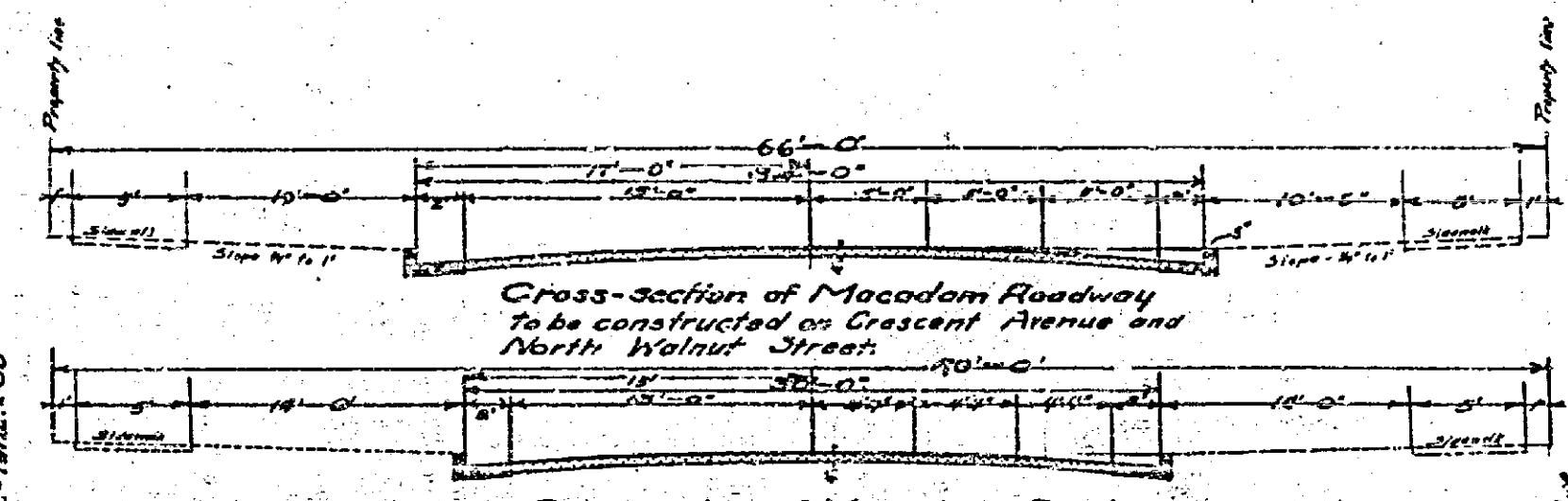
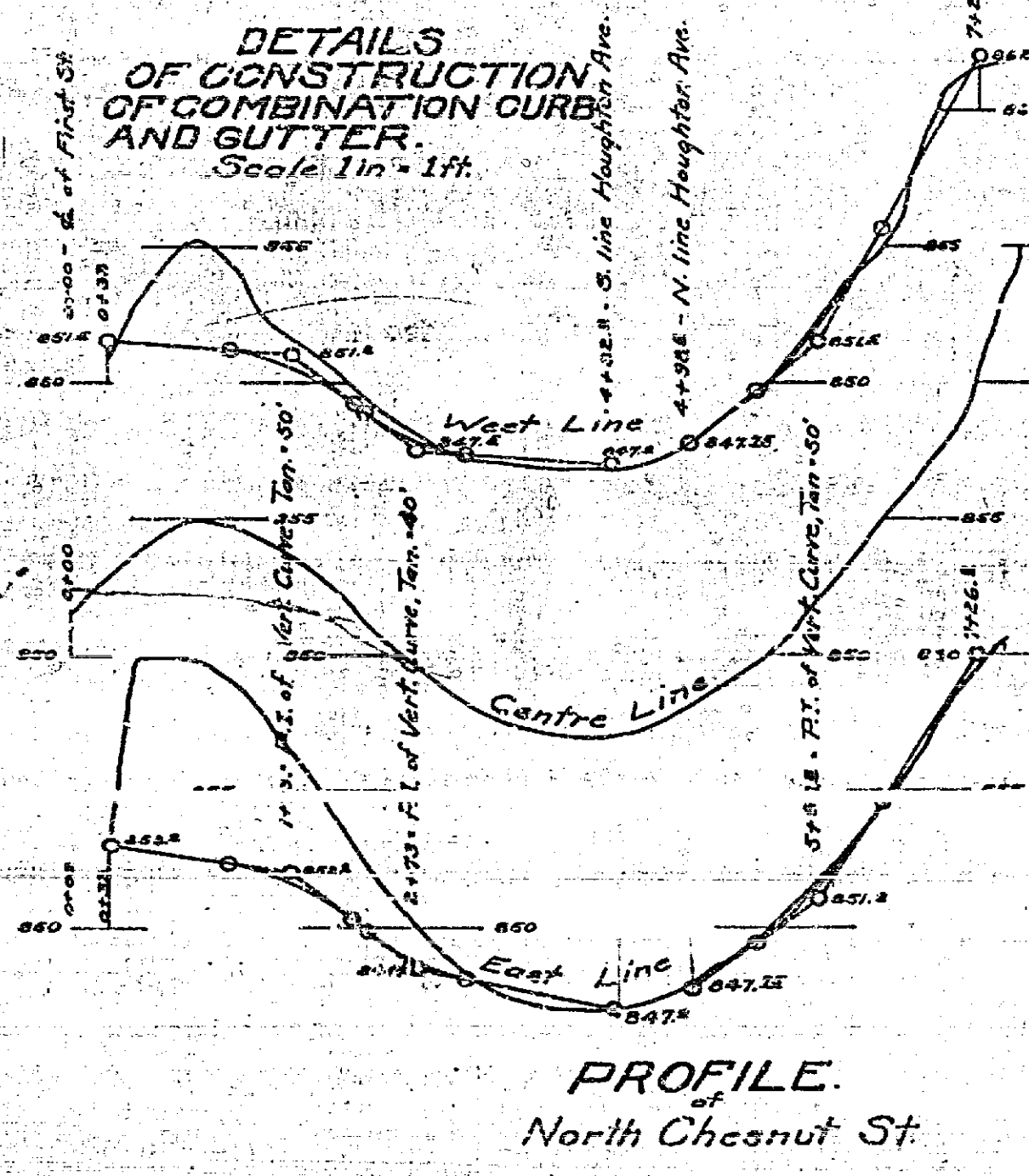
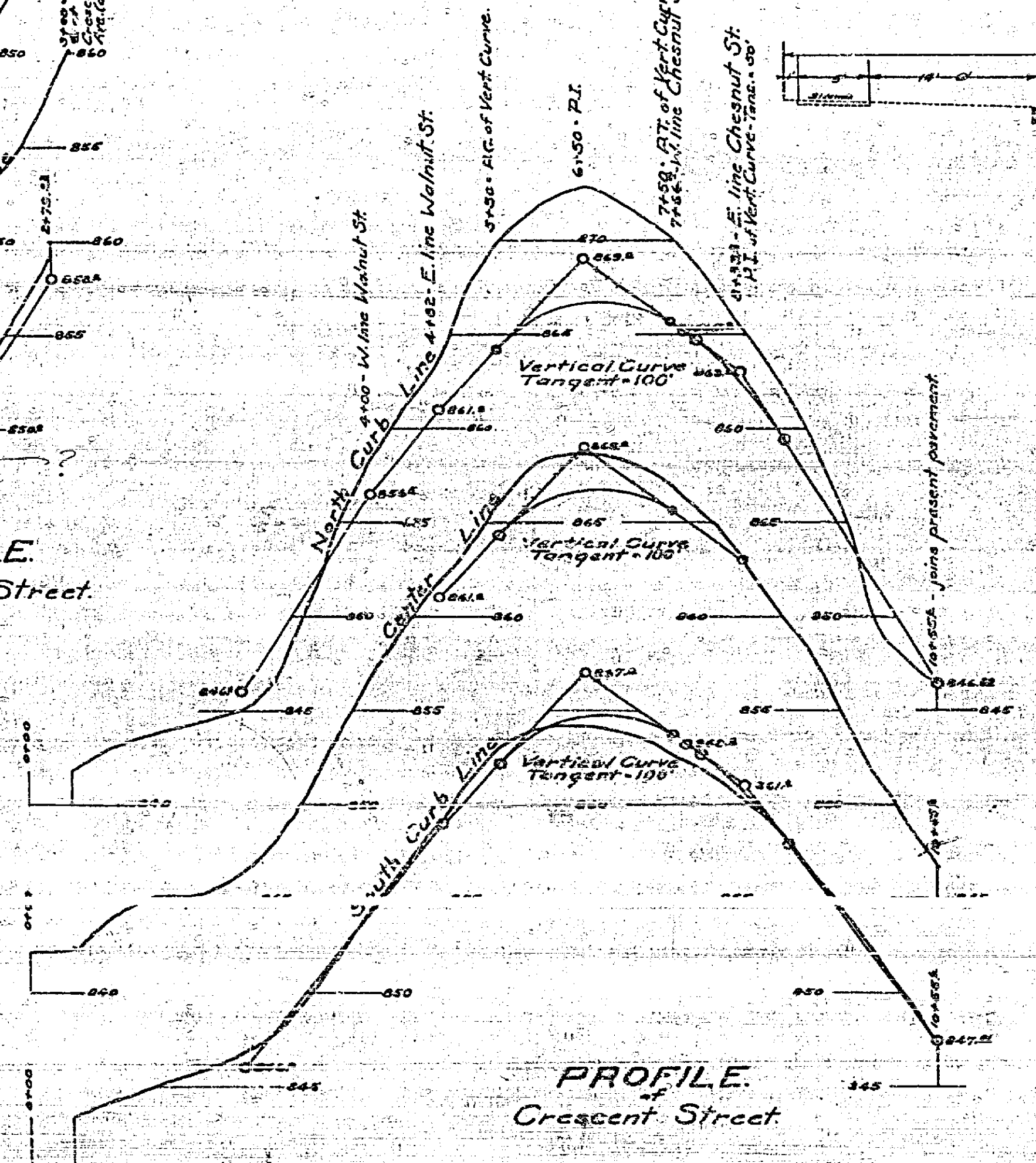
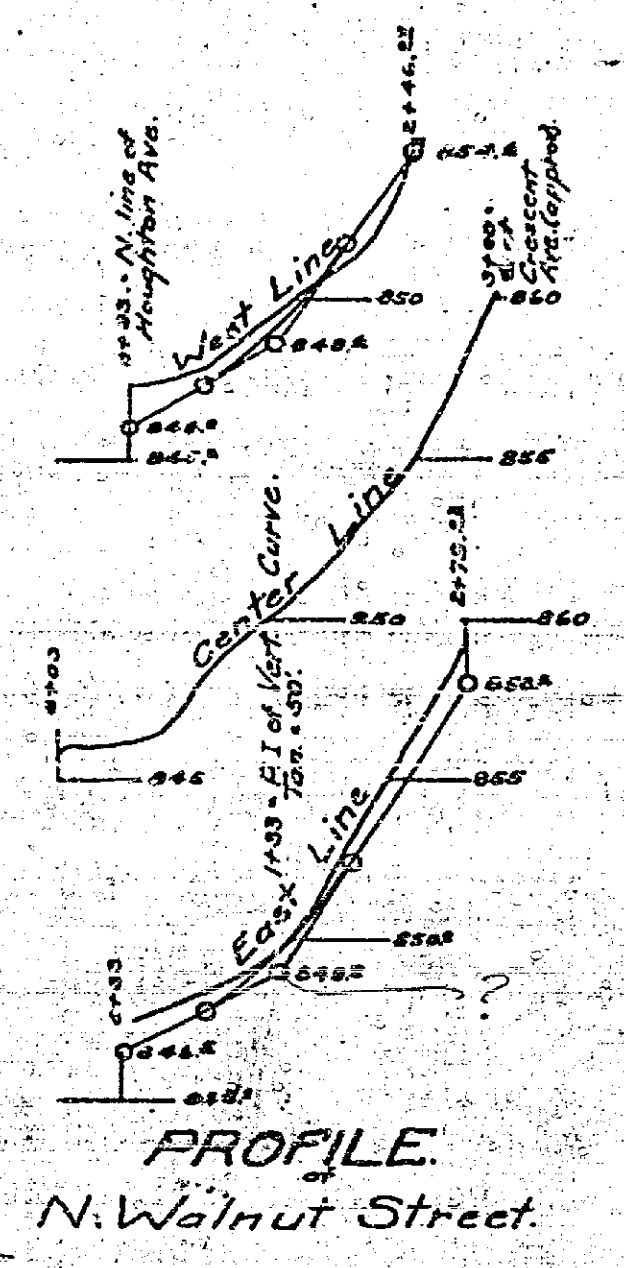
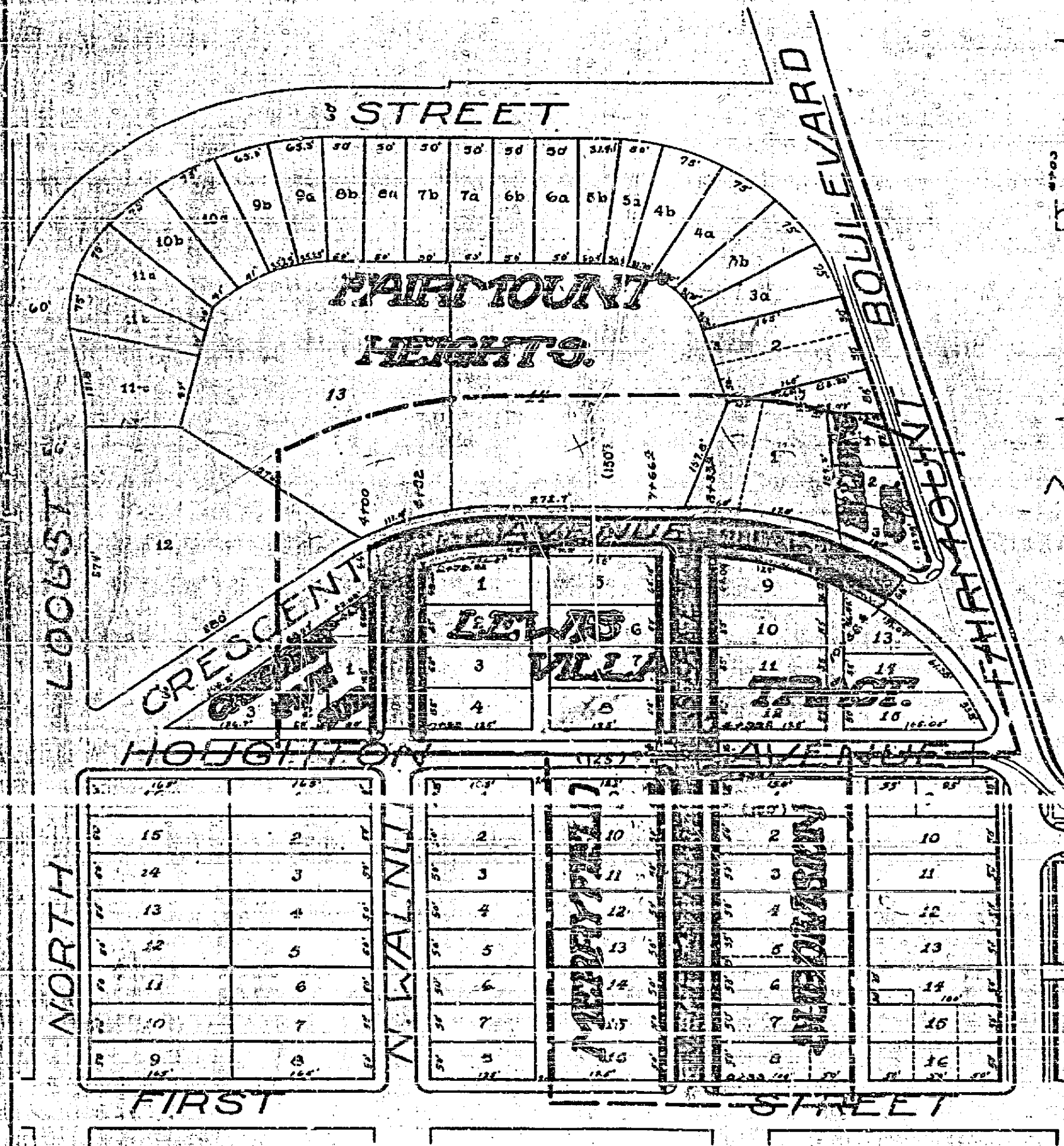


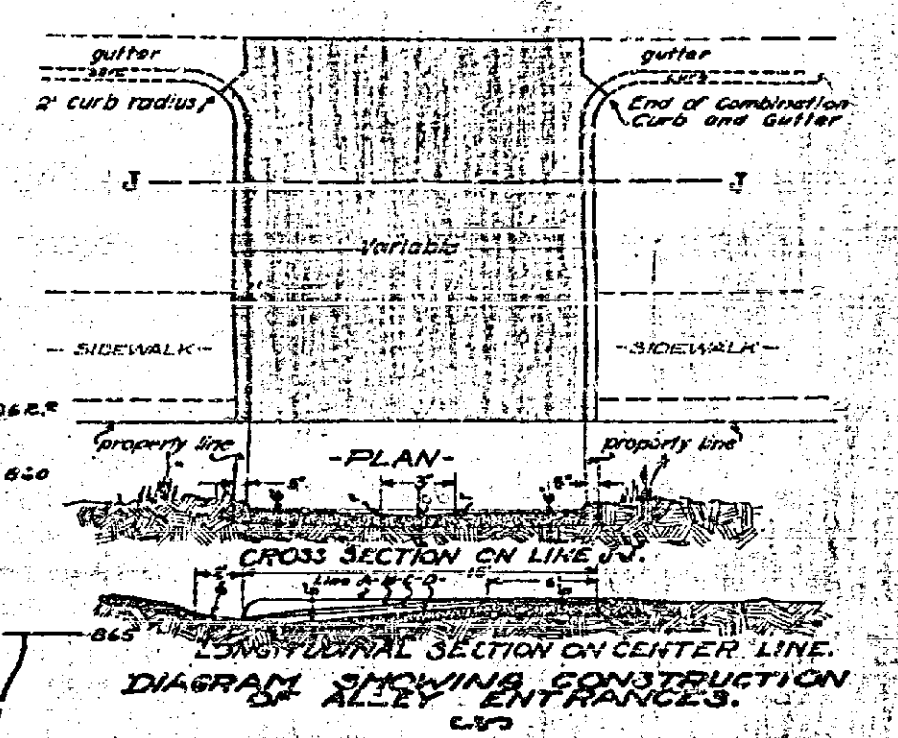
368-C
 MAP SHOWING
 MACADAM ROADWAY, COMBINATION CURB AND GUTTER TO BE CONSTRUCTED IN CRESCENT AVE., NORTH WALNUT ST. AND NORTH CHESNUT ST.
 LEE NAFZGAR CITY ENGINEER.
 Scale 1 in = 100 ft.
 1924



Cross-section of Macadam Roadway to be constructed on North Chesnut Street. Scale 1" = 6".

DETAILS OF CONSTRUCTION OF COMBINATION CURB AND GUTTER. Scale 1 in = 1 ft.

Adopted by the Mayor and the Common Council of the City of Newark on the 22nd day of March 1924.
 Attest _____
 City Clerk



LEGEND
 Macadam Roadway to be constructed shown thus
 Sidewalk to be constructed shown thus
 Combination curb and gutter to be constructed shown thus
 District to be benefited by the improvement shown by a street line thus
 Alley Entrances to be constructed shown thus

368-C
 368C