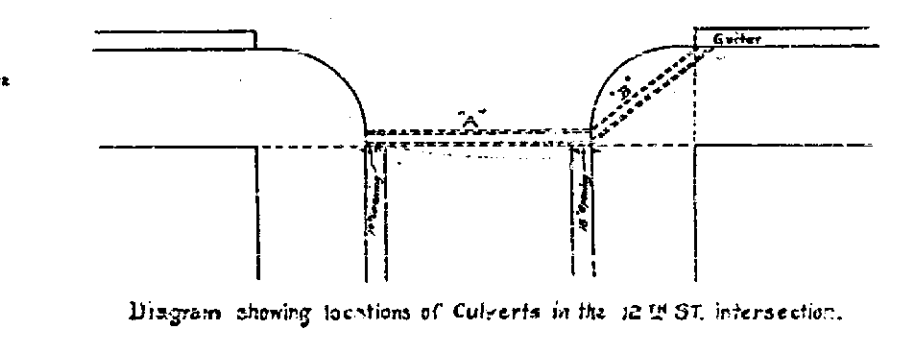
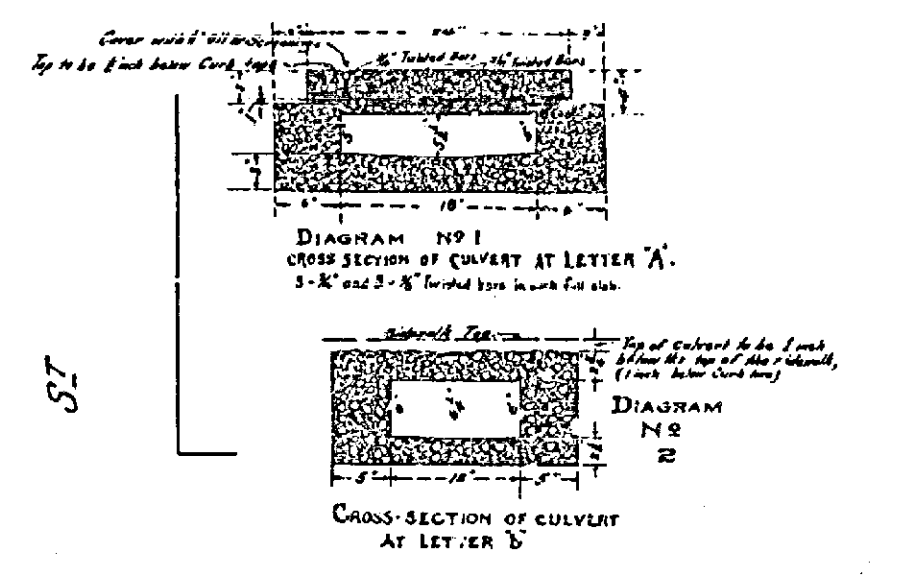
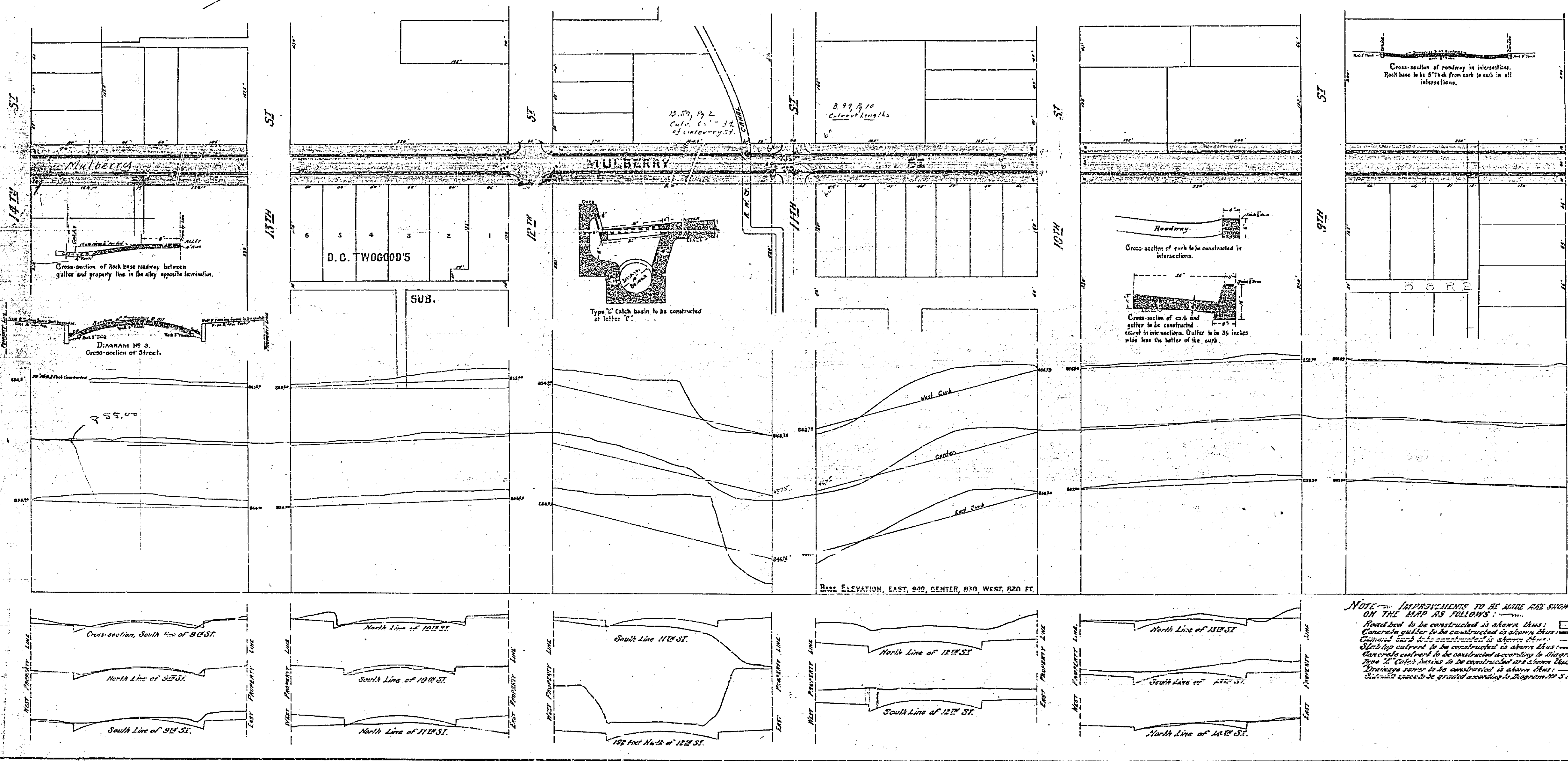


370A

MAP OF MULBERRY ST. IMPROVEMENT FROM 8TH TO 14TH STREET

Scale, 1 in. = 60 ft.
1 in. = 6 ft.

A. P. Campbell,
City Engineer.



NOTE - IMPROVEMENTS TO BE MADE ARE SHOWN ON THE MAP AS FOLLOWS:

- Road bed to be constructed as shown thus: [Symbol]
- Concrete gutter to be constructed as shown thus: [Symbol]
- Concrete curb to be constructed as shown thus: [Symbol]
- Gravel top culvert to be constructed as shown thus: [Symbol] According to Diagram No. 1
- Concrete culvert to be constructed according to Diagram No. 2 as shown thus: [Symbol]
- Type 'C' Catch basins to be constructed are shown thus as lettered 'C'
- Drainage sewer to be constructed as shown thus: [Symbol]
- Subgrade space to be graded according to Diagram No. 3 as shown thus: [Symbol]

Approved by the Mayor and
Commissioners of the City of
Washington, D.C., on
[Date]

370A